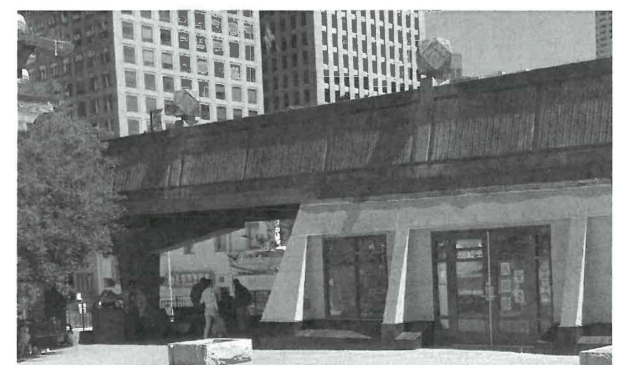


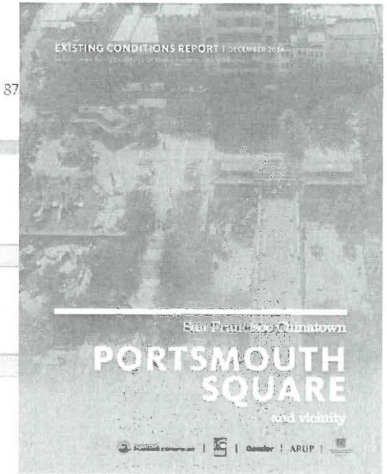
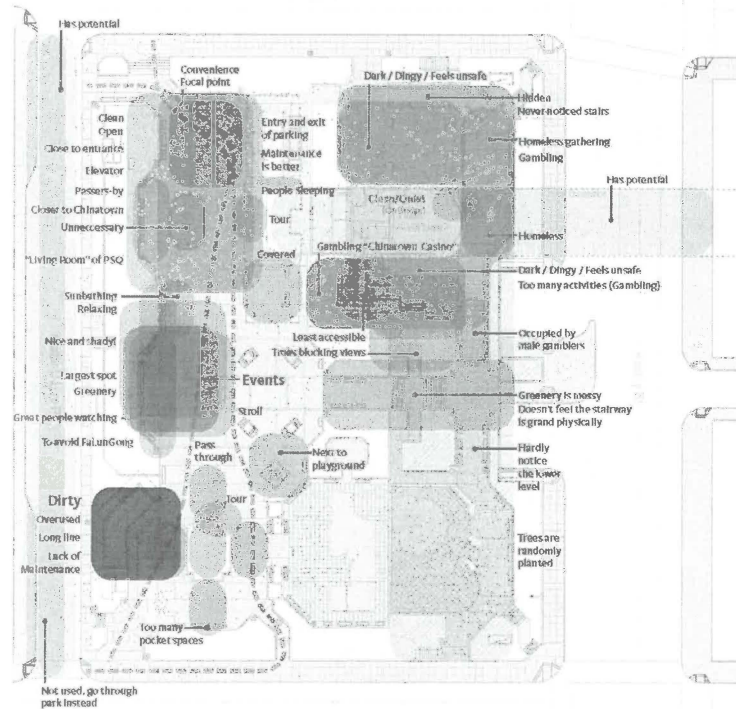
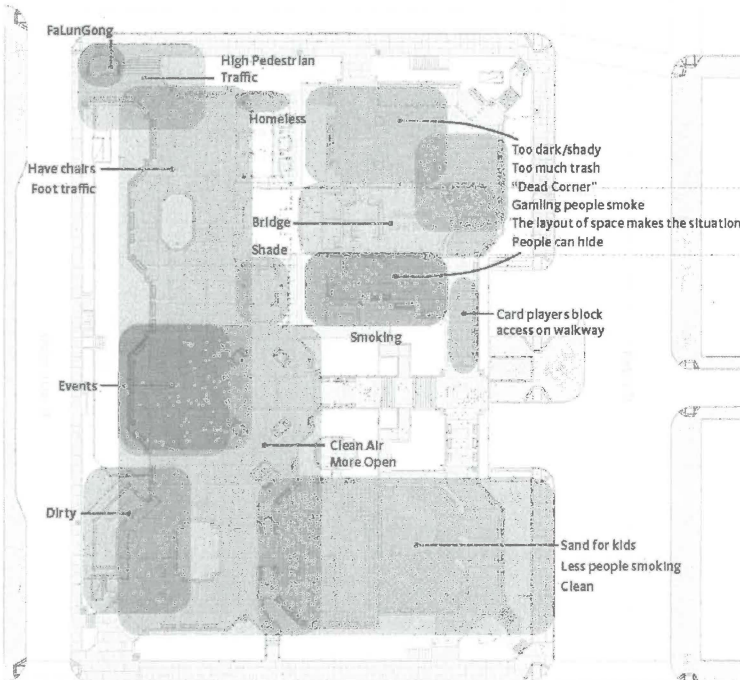
# Portsmouth Square Existing Conditions



# Previous Studies: Existing Condition Report

## FAVORITE AND LEAST FAVORITE SPOTS - FOCUS GROUP

## FAVORITE AND LEAST FAVORITE SPOTS - INTERVIEWS



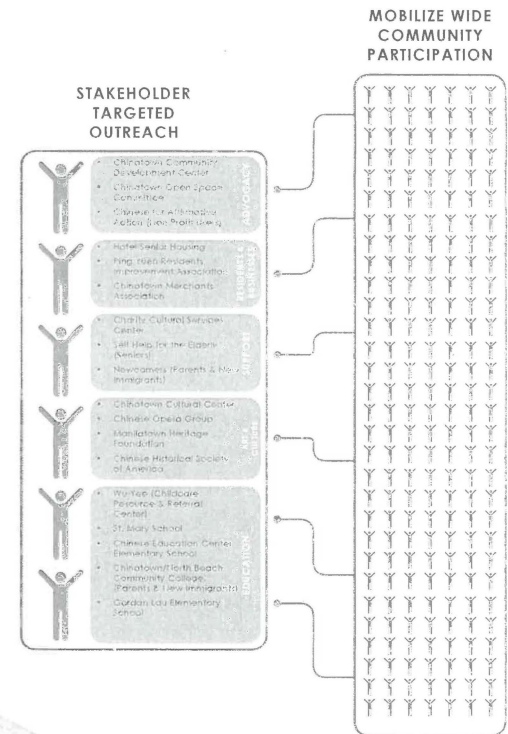
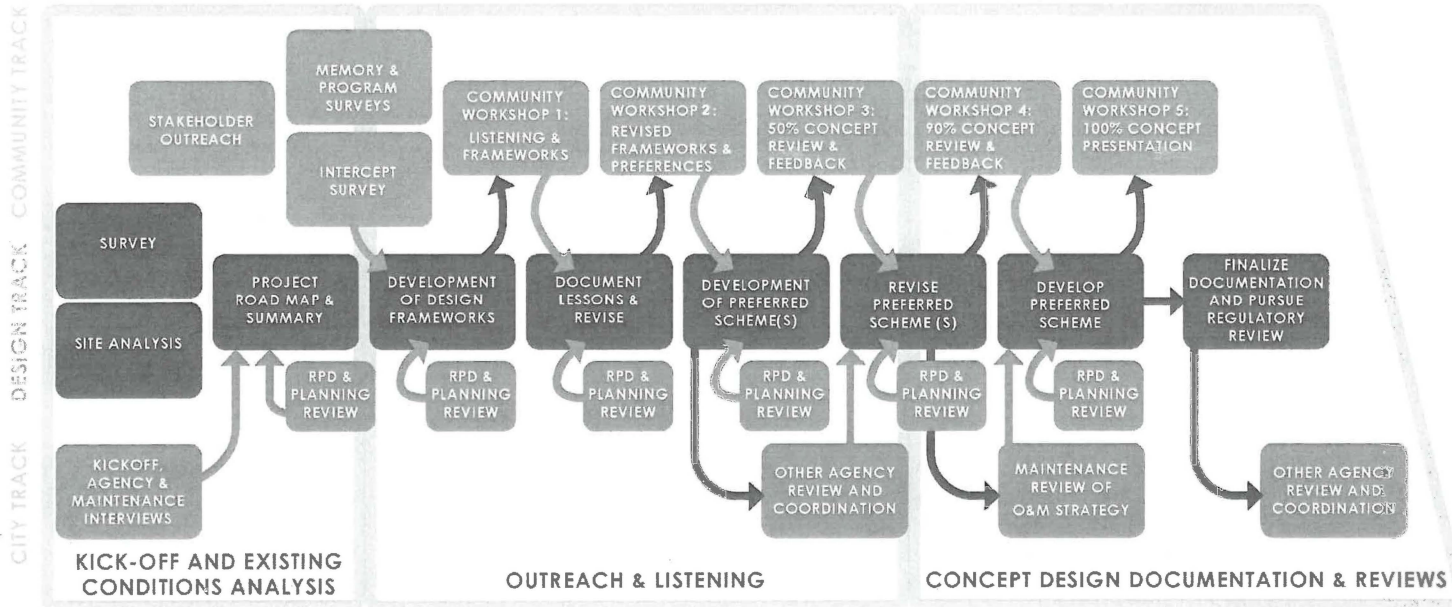
Source: San Francisco Chinatown Portsmouth Square and Vicinity Existing Condition Report, December 2014

N  
0 50 FT  
Figure S.11

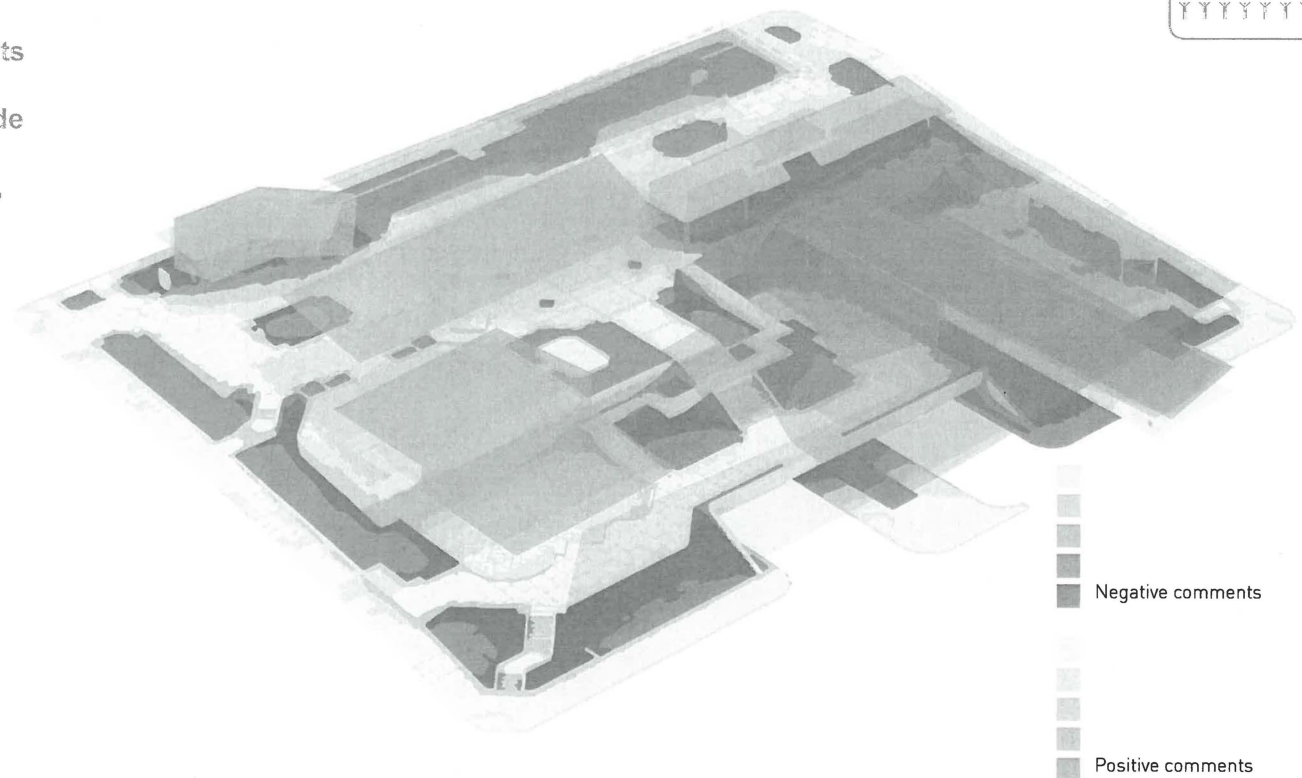
Favorite Least Favorite

N  
0 50 FT  
Figure S.12  
Favorite Least Favorite Preferred Path

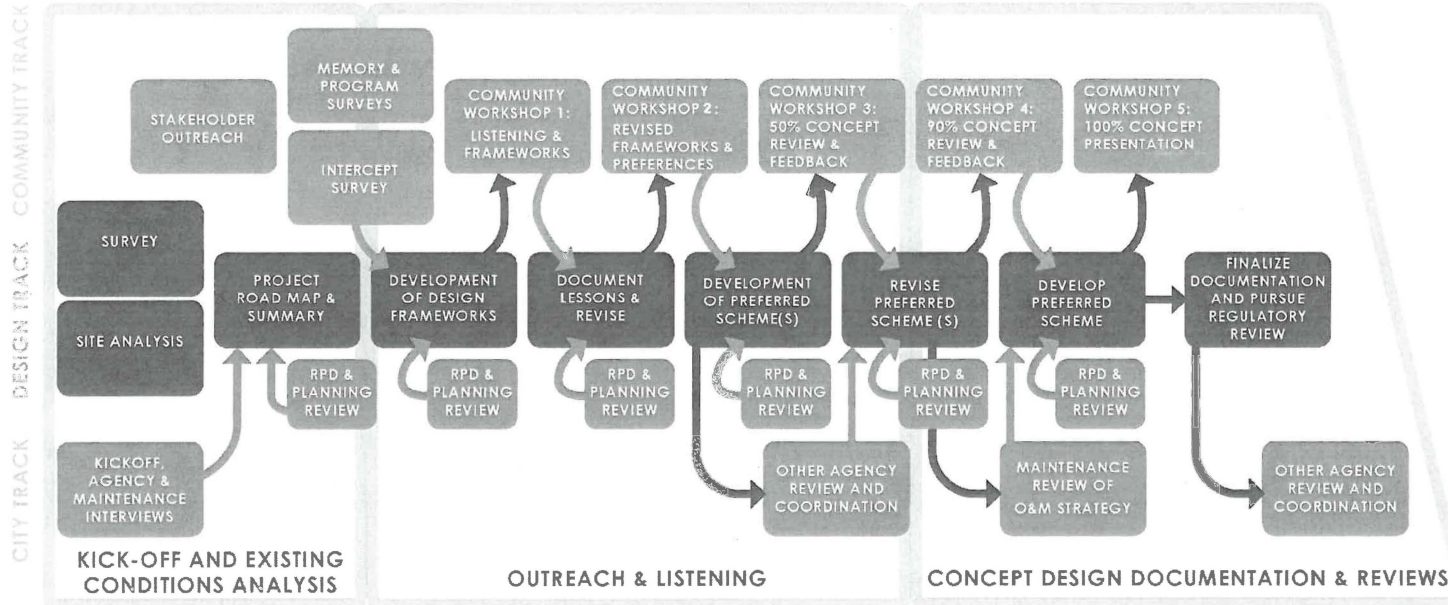
# Portsmouth Square Community Process - Stake holders



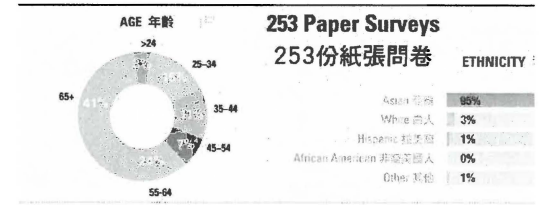
- The design support and enable diverse events
- Provide diverse options for seating and shade
- Address homeless population, unsafe areas, hidden corners
- Provide a better community room
- Have increased maintenance / enforcement
- include play in some way
- Improve the lower terrace
- Preserve role as community living room



# Portsmouth Square Community Process - Public Survey



## Demographics 人口統計資料



## Full Paper Survey Results

Do you ever visit other parks in Chinatown?  
您也去華埠的其他公園嗎?

29% YES 是

71% NO 否

When you are at Portsmouth Square?  
您在花園角時都做哪些活動?

REST/RELAX 休息/放鬆

SOCIALIZE/MEET FRIENDS 社交活動/朋友聚會

Do you ever come to the park with children?  
您是否曾帶小孩來這座公園?

51% NO 否

49% YES 是

Do you ever use the bridge?  
您是否有用過那座行人陸橋?

YES 是 27%

NO 否 73%

Events at Portsmouth Square?  
您是否有參加或出席在花園角舉行的活動?

YES 是 21%

NO 否 79%

If additional space and programming were available at the clubhouse, would you use it?  
如果俱樂部提供更多空間和活動，您會去用嗎?

YES 是 65%

NO 否 35%

Most popular time to visit  
最熱門的造訪時間

Morning / Afternoon 上午/下午	76%
Evening 晚上	13%
Evening 晚上	9%
Morning / Afternoon 上午/下午	70%
Evening 晚上	7%

Do you ever use the clubhouse?  
您是否有用過俱樂部?

YES 是 19%

NO 否 81%

Demographics 人口統計資料

Gender 性別: 45% Male, 55% Female

Age 年齡: 73% 18-34, 15% 35-44, 8% 45-54

Ethnicity 族裔: 98% Asian, 3% White, 1% Hispanic, 0% African American, 1% Other

What amenities should Portsmouth Square have?  
花園角應該要有哪些設施?

Water Fountain	65%
Benches	61%
Shaded Areas	55%
Playground	35%
Public Art	33%
Public Restrooms	31%
Public Storage	25%
Public WiFi	22%
Community Support Center	20%
Public Seating	19%
Public Art	18%
Public Storage	15%
Public Art	14%

How long do you usually stay?  
您在這座公園通常會待多久?

82% Less than 1 hour 少於1小時

9% Stay longer than 3 hours 超過3小時以上

9% Pass through 經過

How often do you come to the park?  
您多常來這座公園?

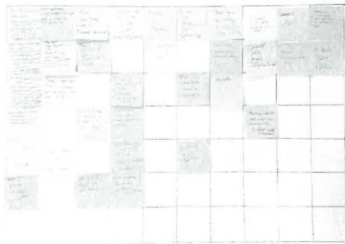
At least once a week 每週至少一次以上	18%
1-3 times per week 每週1-3次	18%
Once a month 一個月一次	18%
Once a year 一年一次	18%
Less than once a month 一個月不到一次	18%
Once a month 一個月一次	18%

# Portsmouth Square : Workshop 1 - Listening



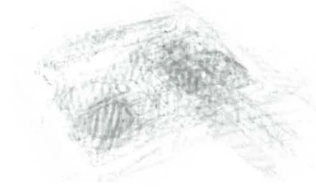
## Station 1: Memory/Hopes

Please share a hope or wish for the future of Portsmouth Square.  
請分享對花園角廣場未來的一項期待或願望。



## Station 2: Mapping

Spaces to be improved



- Lower Terrace
- Under bridge/community room
- Lower Terrace playground

Participants drew on provided worksheets to provide feedback on the prompts above. These graphics show the cumulative feedback of the over 60 worksheets per item. The darker the color shows the increased number of participants drawing on the same spot - providing a collective heat map of feedback.

## Station 3: Uses

### Landscape Preferences

- Trees
- Planting
- Benches
- Tables and Chairs
- Fitness Equipment
- Playground
- Flexible Event Space
- Stage
- Additional event seating
- Shade structures
- Ping Pong
- Martial Arts Space
- Chinese Chess

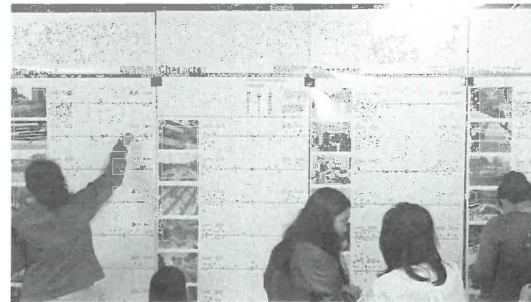
This station was a dot exercise for preferred park uses. Green dots were associated with positive feedback, red negative.



### Architecture Preferences

- Lease-able space for community organizations (Preschool/Self Help)
- Rentable space for occasional events
- Indoor 'Shared Living-room' (4 season)

## Station 4: Character



This station was a dot exercise for preferred park character. Participants were asked to vote on spectrum from love to hate how they felt about the aesthetic represented in the visual preference precedent image provided. The team found a fairly even distribution of results, leaning toward a combination of contemporary and traditional features.

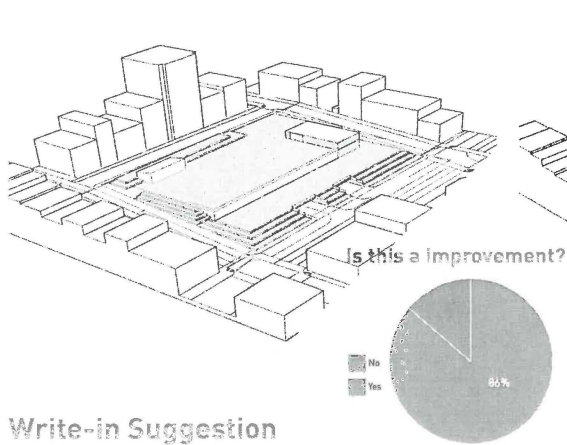
## Key Findings

- Bigger rec center facility
- More open space
- Bigger playground
- Shade
- Remove or improve use of bridge
- More art

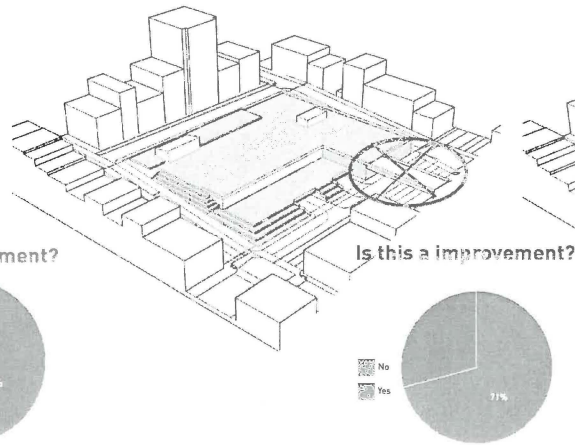
# Portsmouth Square : Workshop 2 - Frameworks



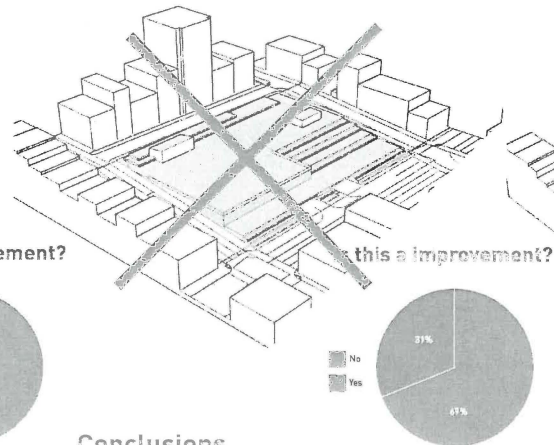
Framework 1



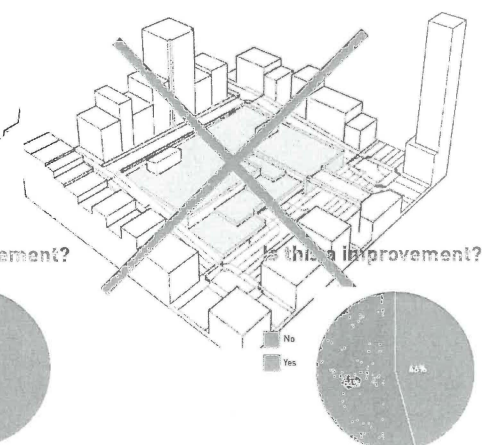
Framework 2



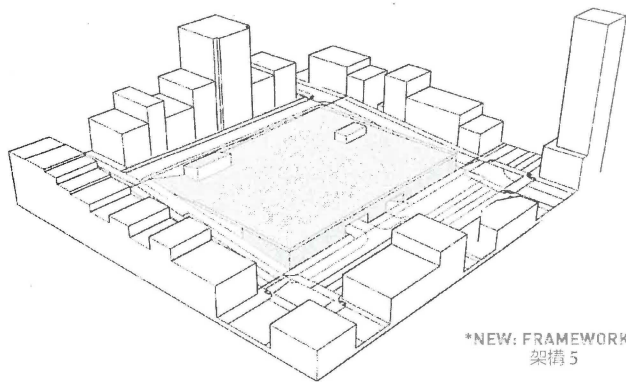
Framework 3



Framework 4



## Write-in Suggestion



- Variations of this framework were written-in or sketched on surveys on over 30 responses.
- Each facilitation team repeatedly heard suggestions of a 'large plate scheme' that also removed the bridge.
- For the next workshop, revisions of Frameworks 1&3 were advanced, and this new framework was added.

## Conclusions

Design for Workshop 3 should include:

- Framework 1 & 3 were preferred
- Framework 2 was split feedback, bridge was pivotal
- Framework 4 was not preferred
- Bridge generally negative save for a small group who were advocates for keeping it (CCC representatives)
- Large open spaces for community events is critical
- Preference for access from all corners
- Keeping a simple circulation throughout the park is preferred
- Large clubhouse, the bigger the better
- Multi-generational friendly, especially for 10-18 years old age group and elderly
- Playgrounds and exercise areas are preferred more than sports courts
- In split terrace schemes, upper terrace generally preferred for events, lower terrace for program areas (play, exercise, etc.)

# Portsmouth Square : Workshop 3 - Alternatives



## Workshop 3: Schemes

FRAMEWORK 5  
架構 5

Scheme A 方案

Inspiration: Treasure Box  
設計靈感：百寶盒

FRAMEWORK 2  
架構 2

Scheme B 方案

Inspiration: Dougong Upturned Roof  
斗拱曲脊

FRAMEWORK 1  
架構 1

Scheme C 方案

Inspiration: Calligraphy  
毛筆劃

## Conclusions

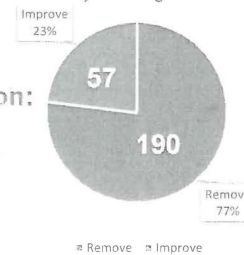
Design for Workshop 4 should include:

- Scheme A as a basis of design
- Revise playground to combination of Scheme B & C
- Revise exercise equipment to include a full outdoor gym, but arranged around the periphery of the playground like Scheme A
- Revise the trellis structures of Scheme A to have the architectural style of Scheme B
- Provide alternatives for fencing - panel system with historic interpretation, panel system with graphic patterning, maximum transparency option, post and gate system.
- Provide alternatives for material preferences
- Provide alternatives for furnishings
- Provide alternatives for planting palettes
- Provide alternatives for sustainability features

## Workshop 3: Feedback

Q2. BRIDGE: Please select which statement best reflects your opinion below:

- The Kearny Bridge should be removed.
- The Kearny Bridge should be kept and integrated with the new pl



Recommendation:  
Remove Bridge



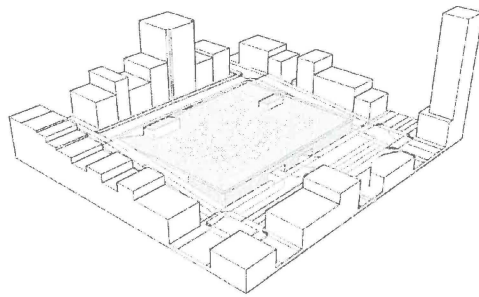
# Portsmouth Square : Workshop 4 - Preferred Options



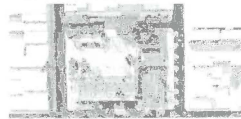
The design team checked in with the community at Workshop 4 with a unifying concept based on Scheme A, to make sure the design team was on the right track and to share and receive feedback for any new developments. We presented first a summary of the public process, the resulting design that derived from that feedback. Comments were solicited via Q&A, comment cards, and comment stations.

The feedback was targeted to determine community priorities within the design to inform the design development through improvement planning review and value engineering with city agencies. The feedback also answered key program questions regarding play and fitness equipment, the sustainability program, and fencing.

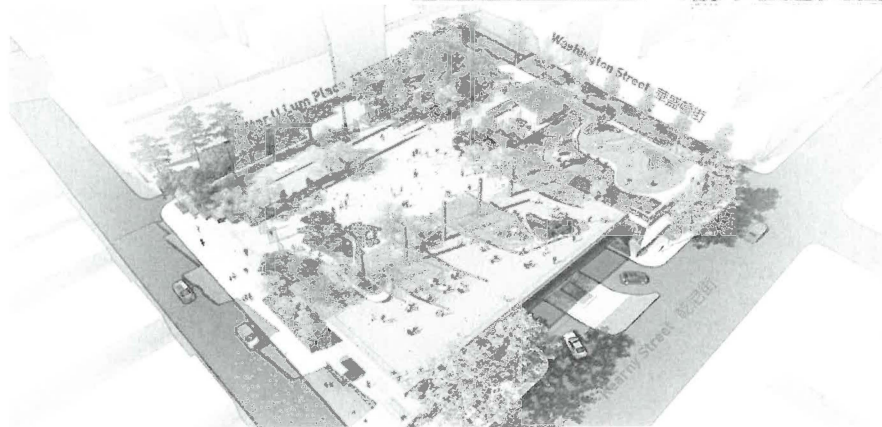
## Scheme A



Key Plan 索引平面图



Existing Conditions 现状



## Conclusions

### Community Priorities (In descending order)

- Large, flexible outdoor event space
- Provide new large clubhouse
- Improved Lighting (enable evening hour use, safety)
- Provide generous shade structures
- New, consolidated playground
- Eliminate bridge
- Perimeter fencing
- Fitness Equipment
- Stage
- Enhanced connection to Walter U. Lum
- Enhanced accessibility

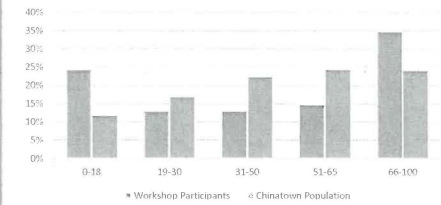
Note: Sustainability program poster was reviewed and positively commented on, but was not part of the preferential survey questions. In the open comment, no negative opinions were forwarded for the sustainability poster.

## Workshop 4 Attendance

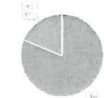
Total Attending: +300  
Completed Surveys: 243

Margin of Error based on this sample size: 5%  
(95% Confidence interval)

### Age Distribution\*

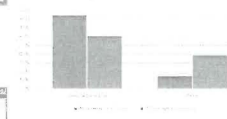


### Do you live in Chinatown?



T-test: 80% confidence sample population reflects age distribution representative of Chinatown (Bias toward >65 population)

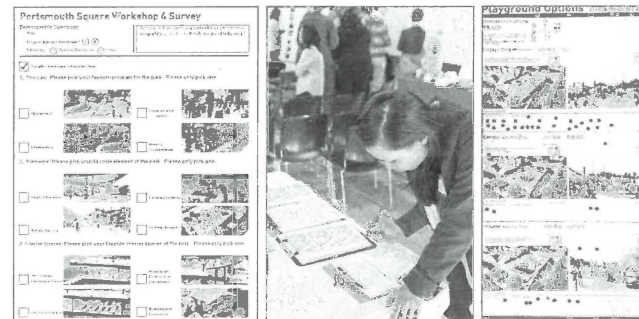
### Ethnicity



### Affiliation



## Workshop 4 Feedback

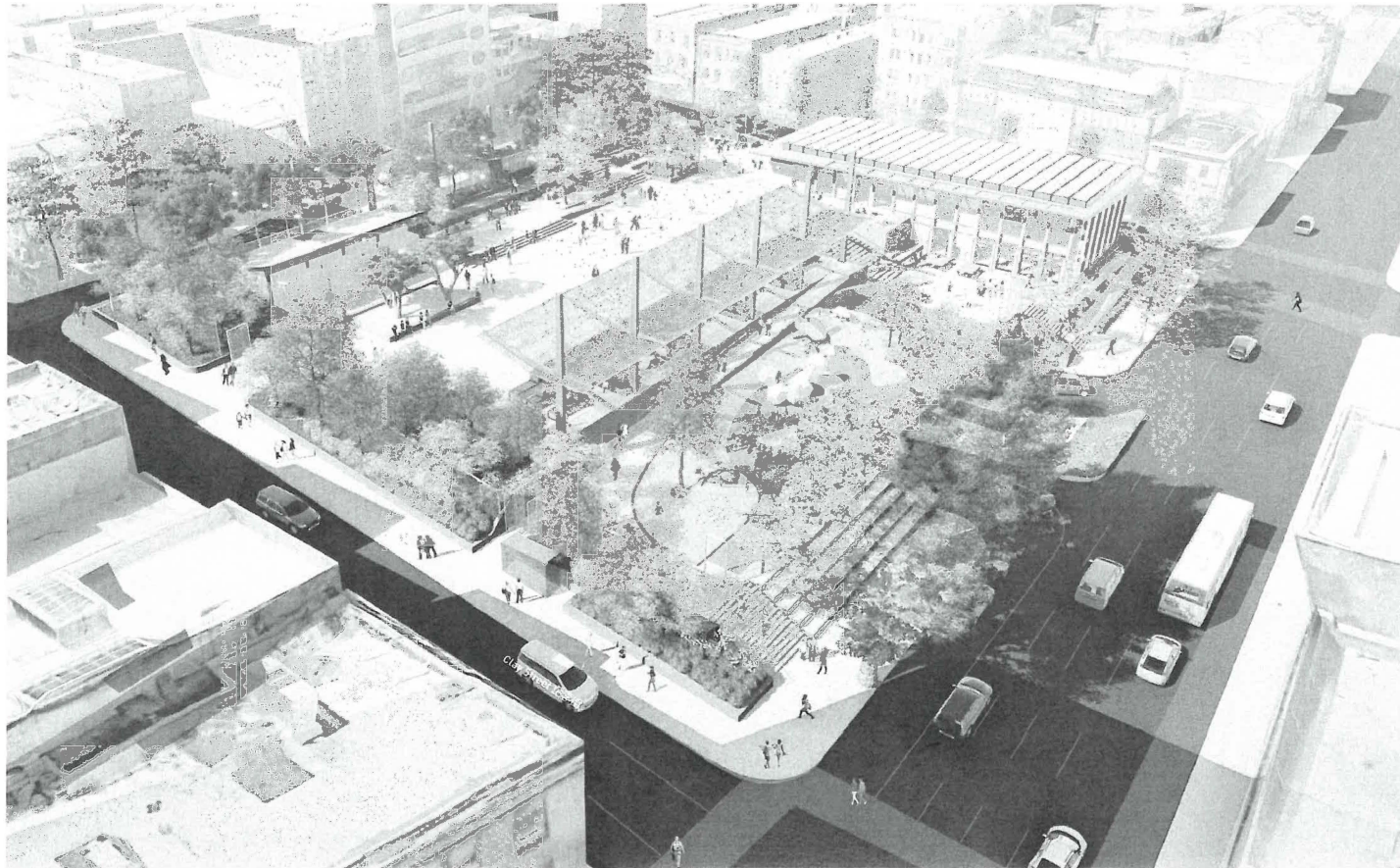
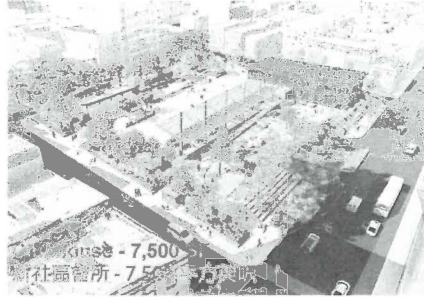




# Portsmouth Square : Workshop 5 - Conclusion

Existing Park 公園現狀

Current Design 設計改善



Thank you