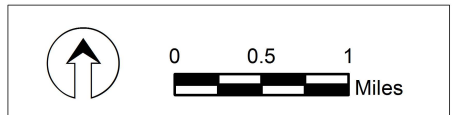


RESPONSIBLE DEPARTMENT

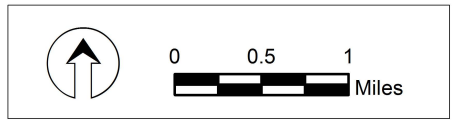
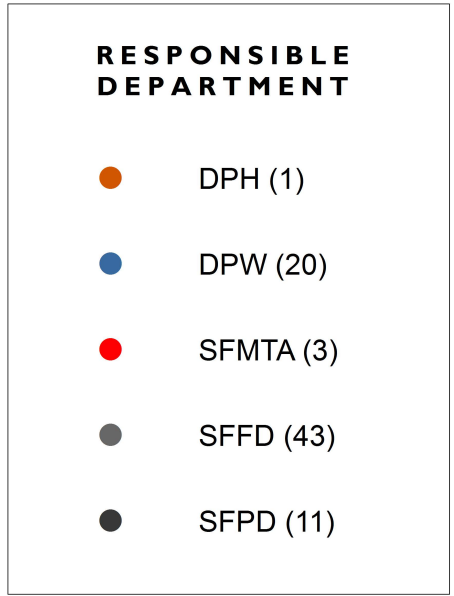
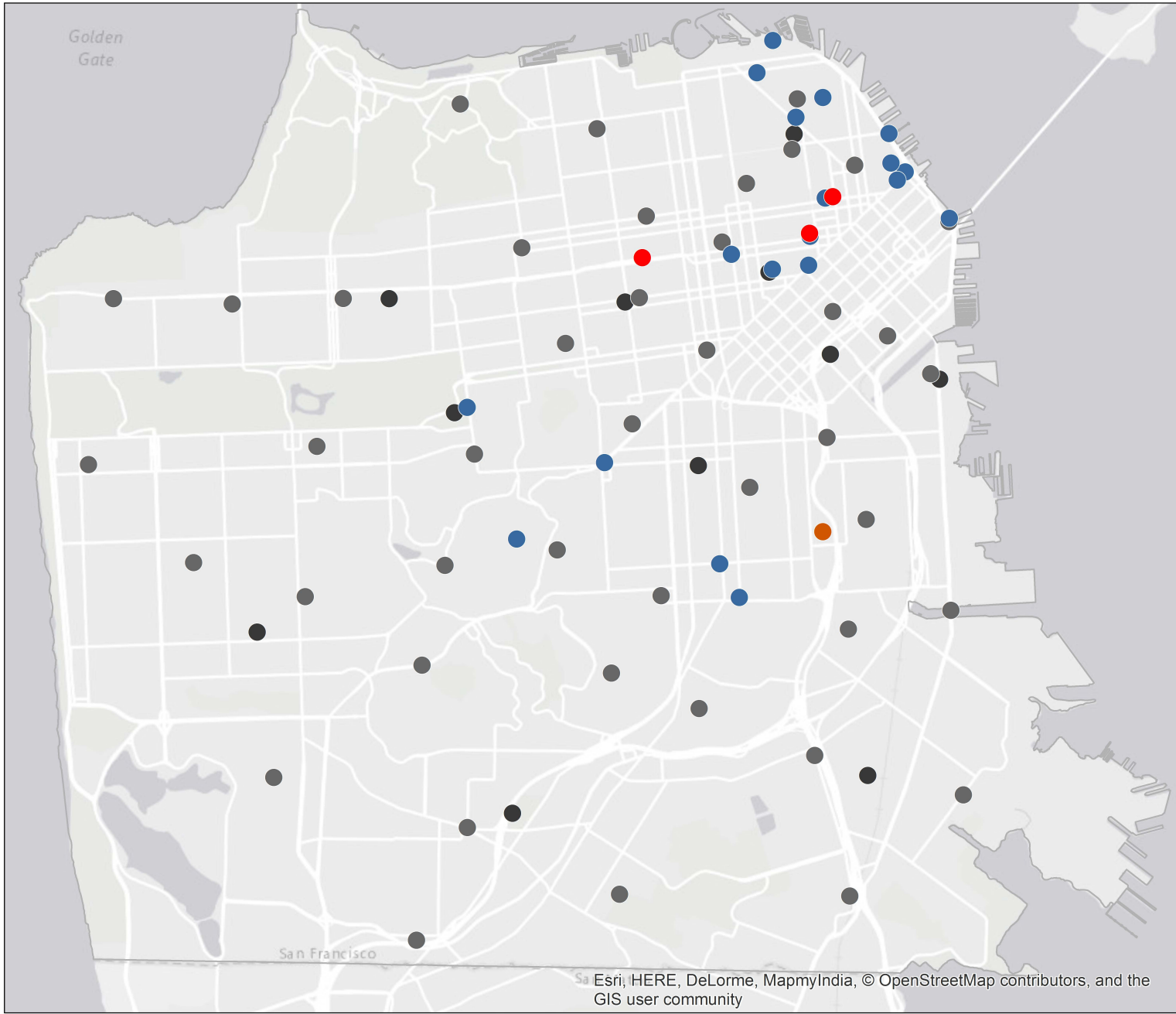
| | |
|---|----------------|
| ● | DPH (13) |
| ● | DPW (30) |
| ● | LIB (28) |
| ● | REC (138) |
| ● | SFMTA (4) |
| ● | OTHER CCSF (7) |
| ● | SFFD (43) |
| ● | SFPD (11) |



Sources: San Francisco Recreation & Parks Department, San Francisco Public Works

October 2015

**FIGURE 1A
PUBLIC RESTROOMS IN THE CITY & COUNTY OF SAN FRANCISCO**

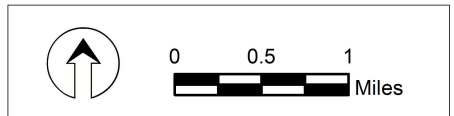
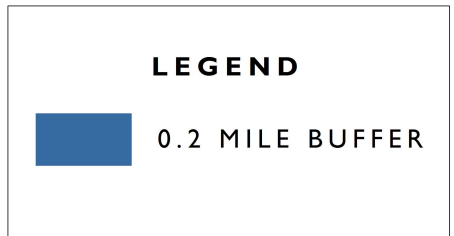
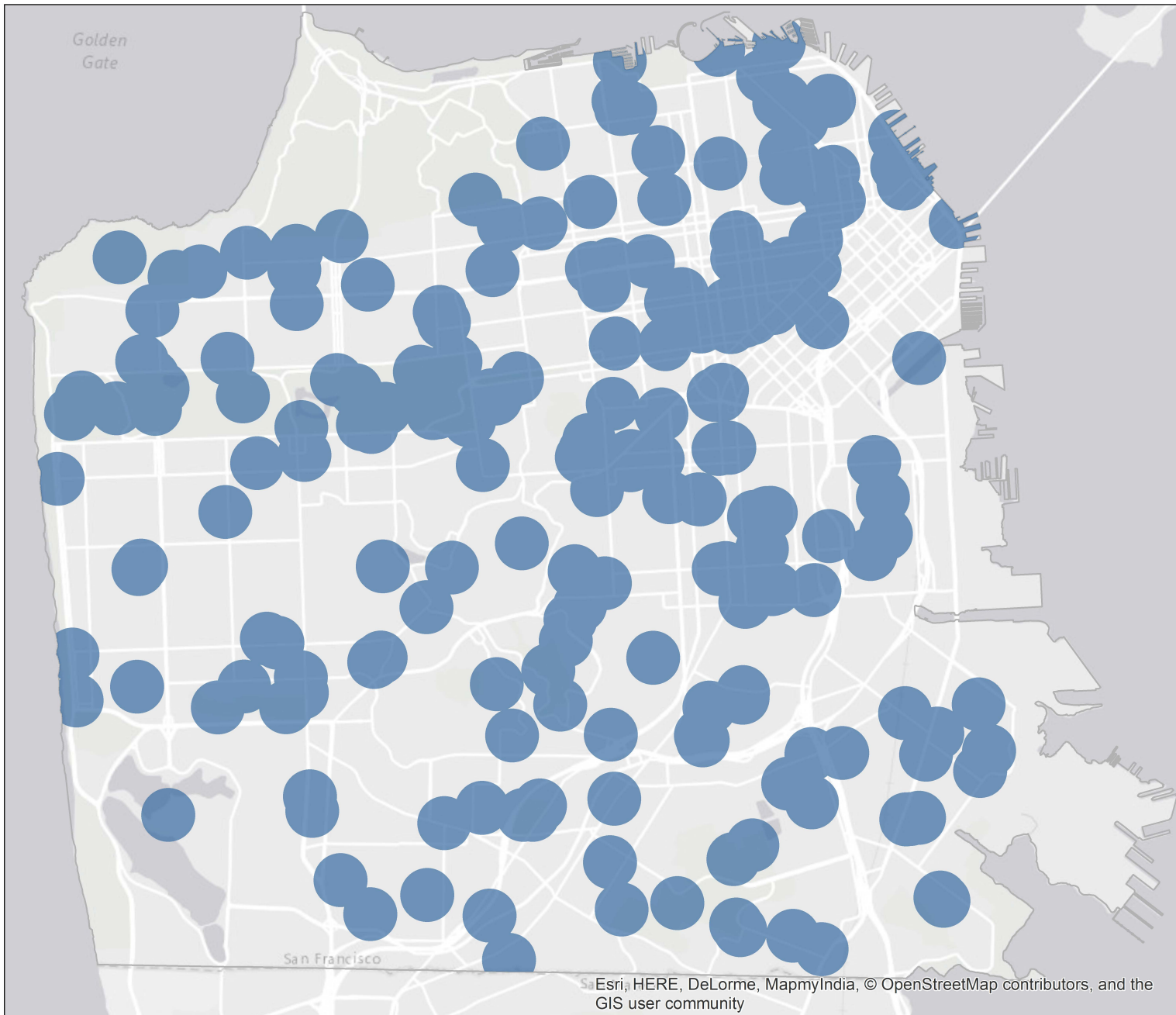


Source: Esri, HERE, DeLorme, MapmyIndia, © OpenStreetMap contributors, and the GIS user community

Sources: San Francisco Recreation & Parks Department, San Francisco Public Works

October 2015

**FIGURE 1B
PUBLIC RESTROOMS OPEN AFTER MIDNIGHT**



Sources: San Francisco Recreation & Parks Department, San Francisco Public Works

October 2015

FIGURE 2
AREAS IN SAN FRANCISCO WITHIN 0.2 MILE OF A PUBLIC RESTROOM

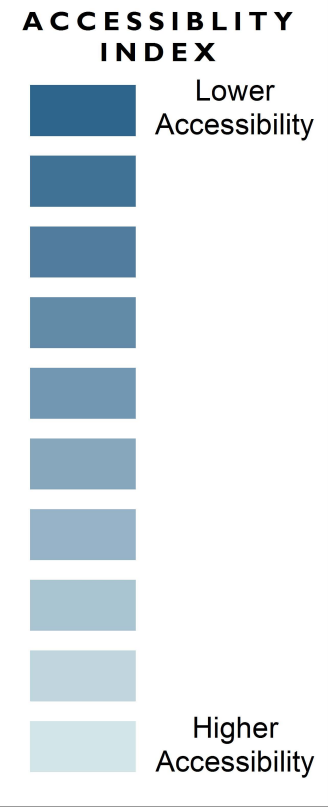
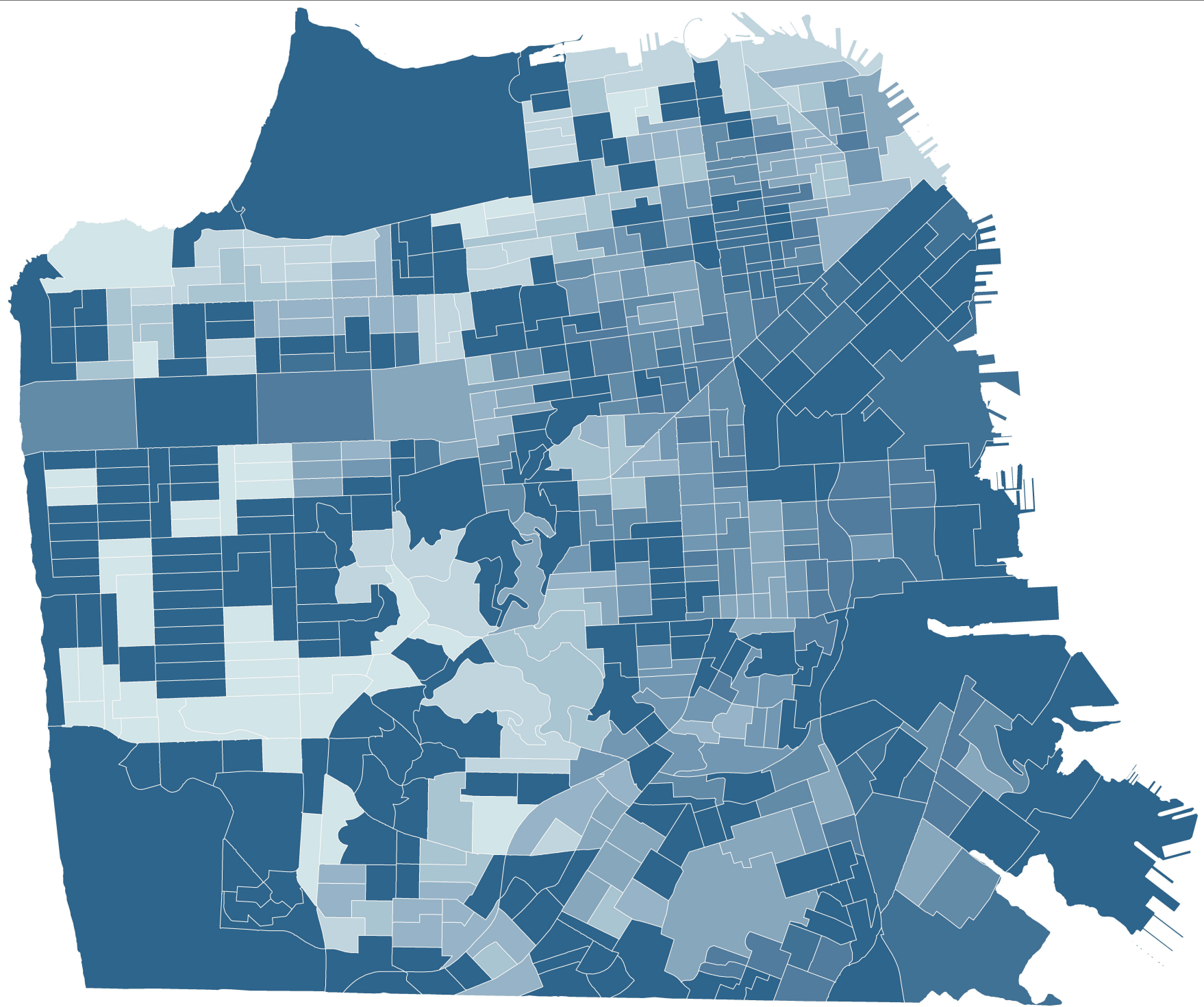
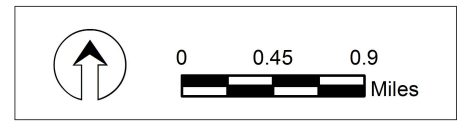


FIGURE 3
ACCESSIBILITY OF PUBLIC RESTROOMS TO THE HOMELESS POPULATION



October 2015

Sources: SF Recreation & Parks Department, SF Public Works, US Census Bureau, Applied Survey Research

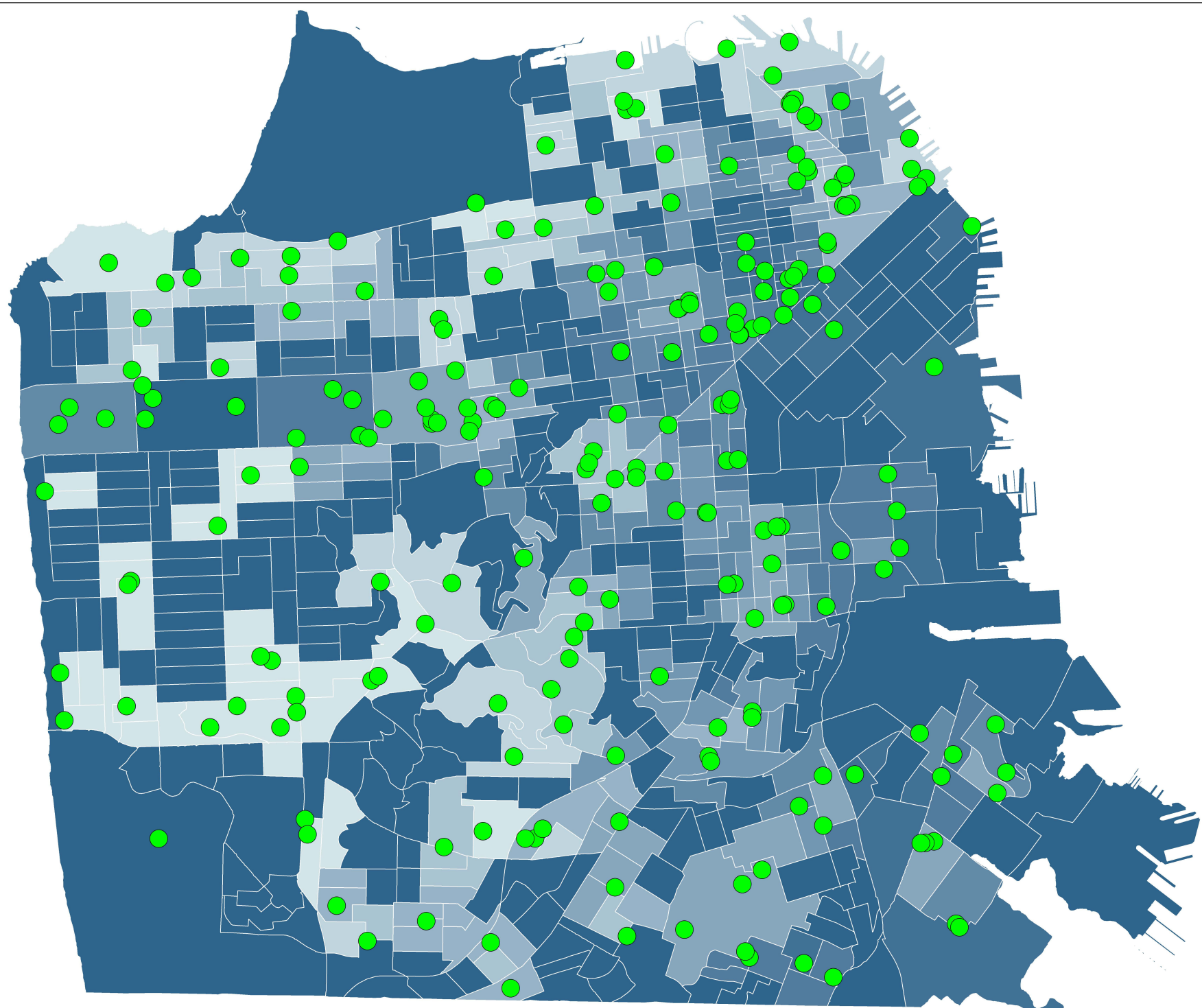
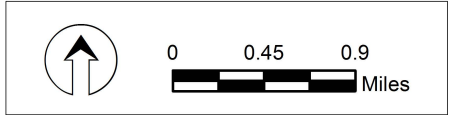


FIGURE 4
ACCESSIBILITY OF PUBLIC RESTROOMS TO THE HOMELESS POPULATION



October 2015

Sources: SF Recreation & Parks Department, SF Public Works, US Census Bureau, Applied Survey Research

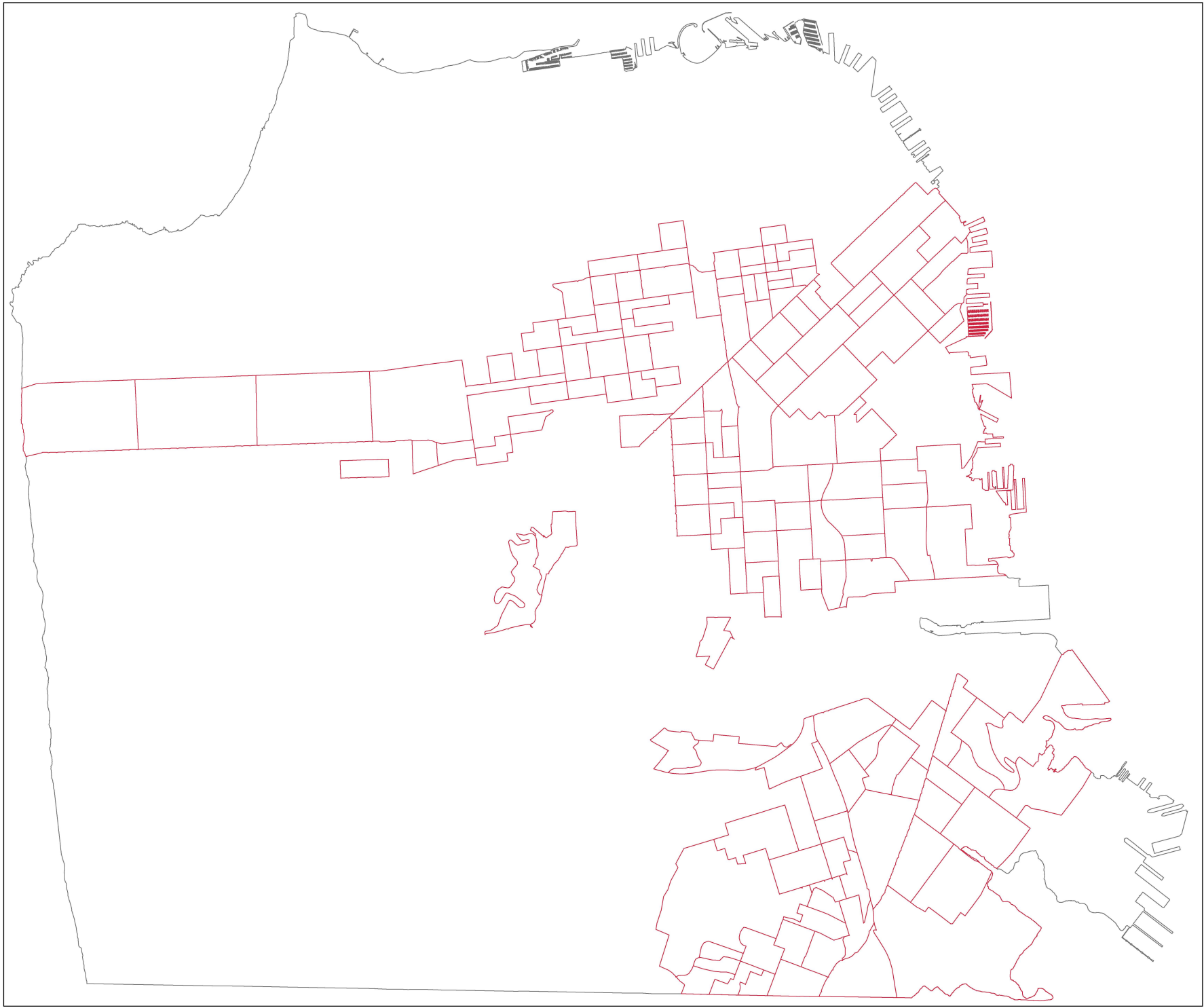
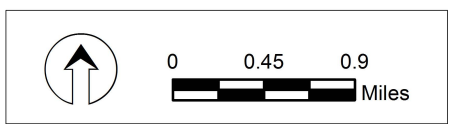
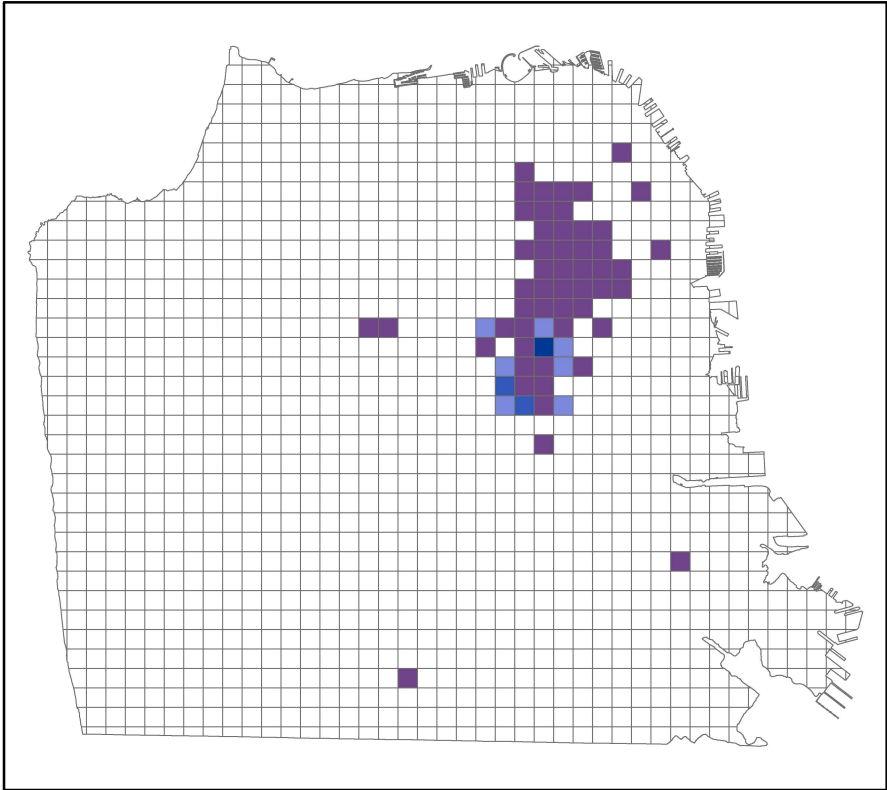
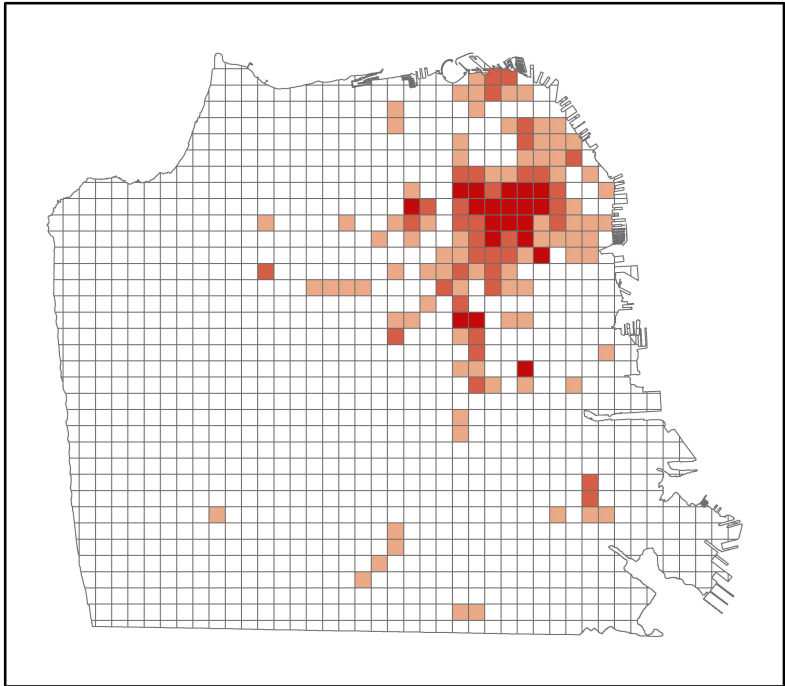
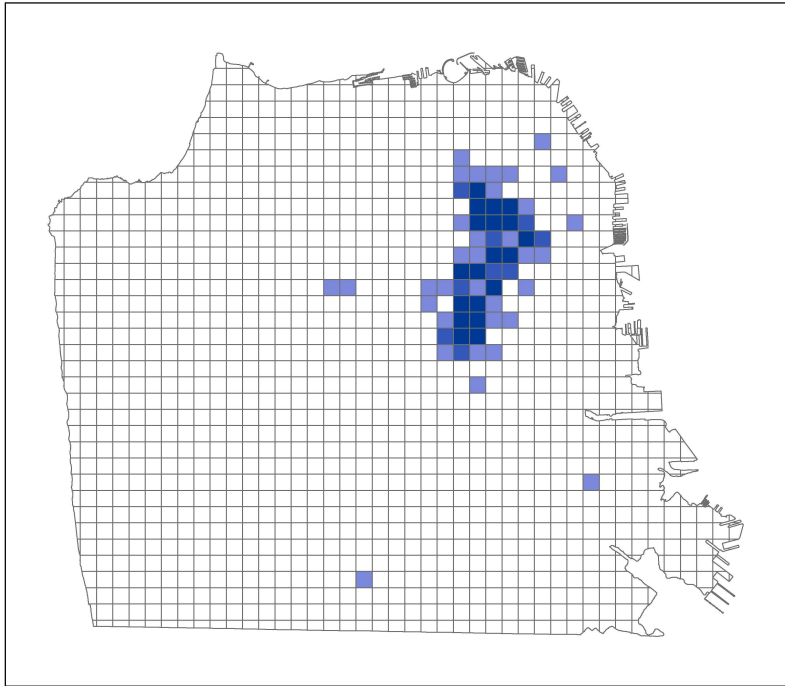


FIGURE 5
**POTENTIAL PRIORITY AREAS
FOR IMPROVING ACCESS TO
PUBLIC RESTROOMS**

October 2015







Sources: SF Recreation & Parks Department, SF Public Works, US Census Bureau, Applied Survey Research







LEGEND

311 CALLS

-  < 0.50 Std. Dev.
-  0.50 - 1.5 Std. Dev.
-  1.5 - 2.5 Std. Dev.
-  > 2.5 Std. Dev.

CRIMES

-  < 0.50 Std. Dev.
-  0.50 - 1.5 Std. Dev.
-  1.5 - 2.5 Std. Dev.
-  > 2.5 Std. Dev.

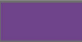
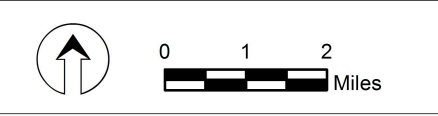
 Areas with high 311 calls and crime

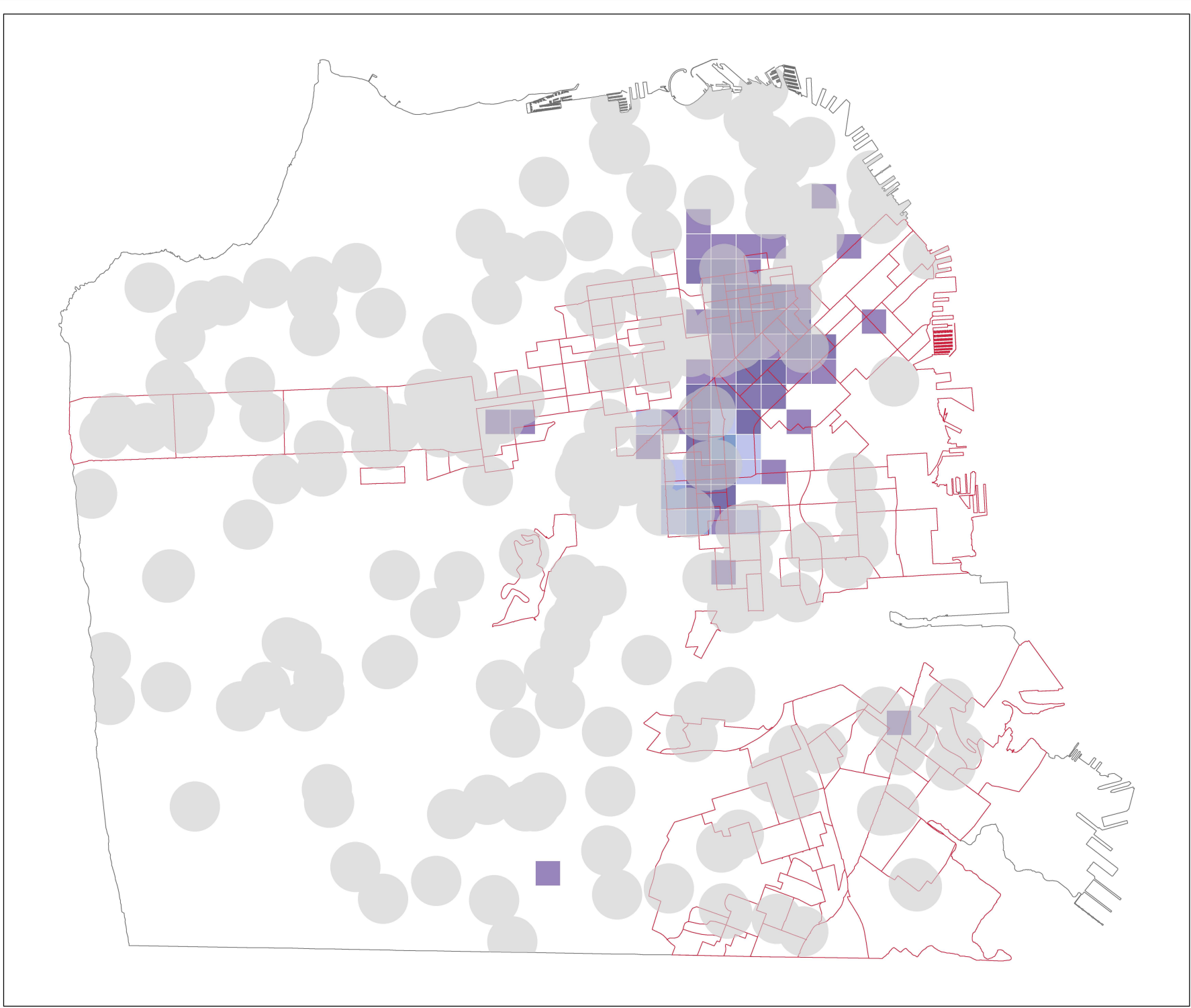
FIGURE 6

HOTSPOTS: CRIME AND 311 REQUESTS FOR STREET CLEANING DUE TO HUMAN WASTE OR URINE



October 2015

Sources: SF Recreation & Parks Department, SF Public Works, US Census Bureau, Applied Survey Research



LEGEND





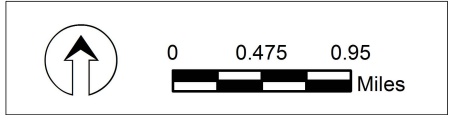
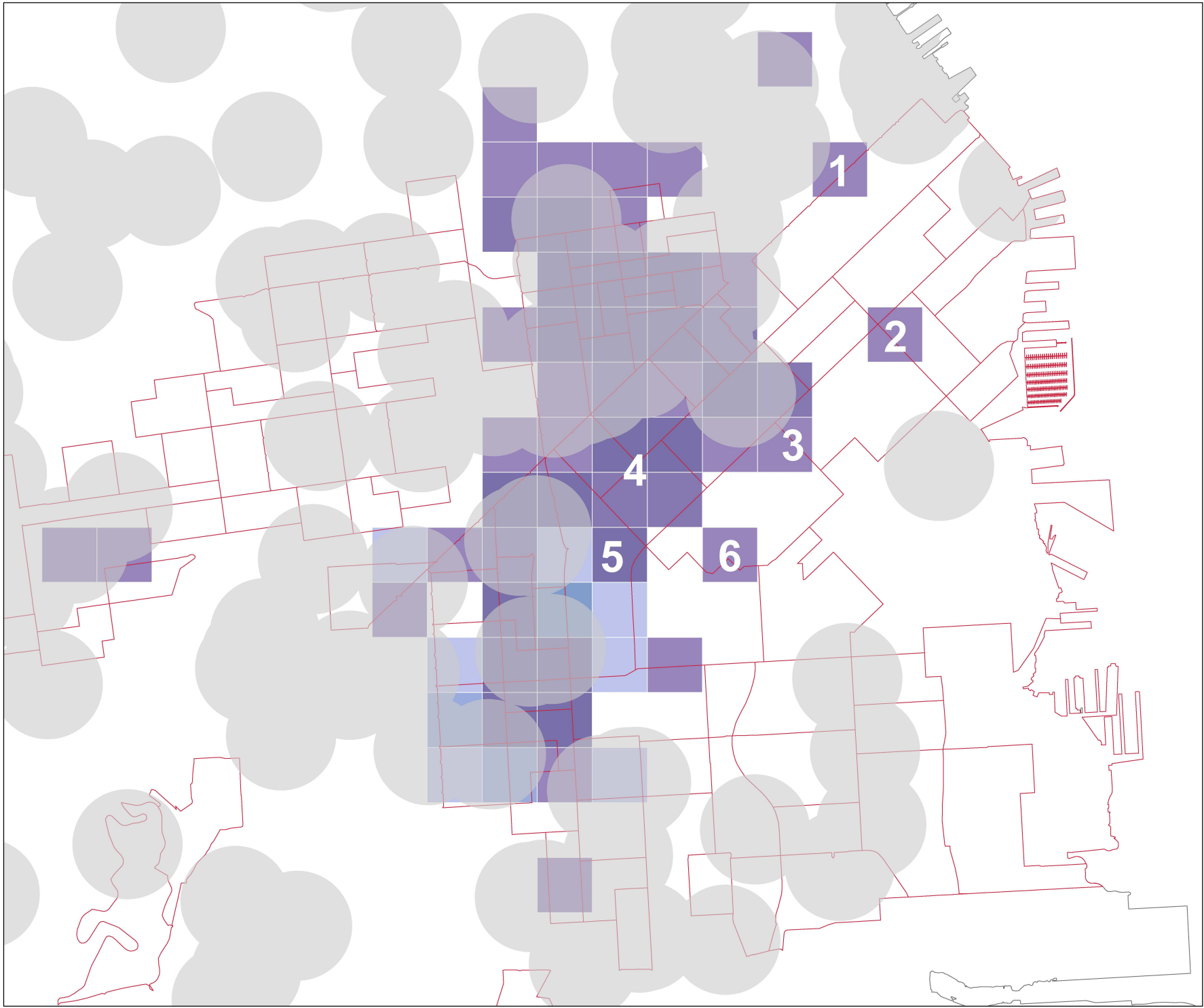
-  Areas within 0.2 miles of an existing public restroom
-  Potential priority areas for improving access to public restrooms
-  Areas with a greater incidence of 311 requests and crime
-  Areas with a greater incidence of 311 requests

FIGURE 7A
OPPORTUNITIES FOR EXPANSION OF THE PIT STOP PROGRAM







October 2015

Sources: SF Recreation & Parks Department, SF Public Works, US Census Bureau, Applied Survey Research, DataSF



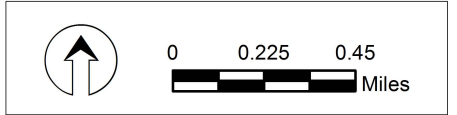
LEGEND

-  Areas within 0.2 miles of an existing public restroom
-  Potential priority areas for improving access to public restrooms
-  Areas with a greater incidence of 311 requests and crime
-  Areas with a greater incidence of 311 requests

- 1** Vicinity of Market between New Montgomery & Fremont
- 2** Vicinity of 3rd & Bryant
- 3** Vicinity of 6th & Bryant
- 4** Vicinity of 9th & Folsom
- 5** Vicinity of 13th & Folsom
- 6** Vicinity of 9th & Brannan

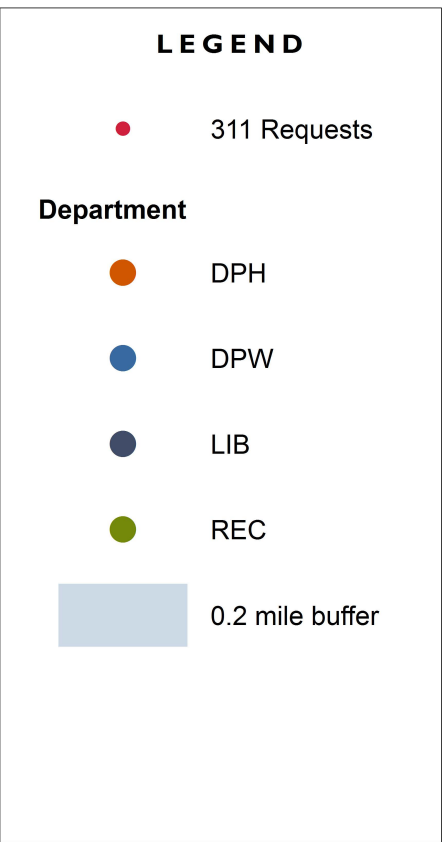
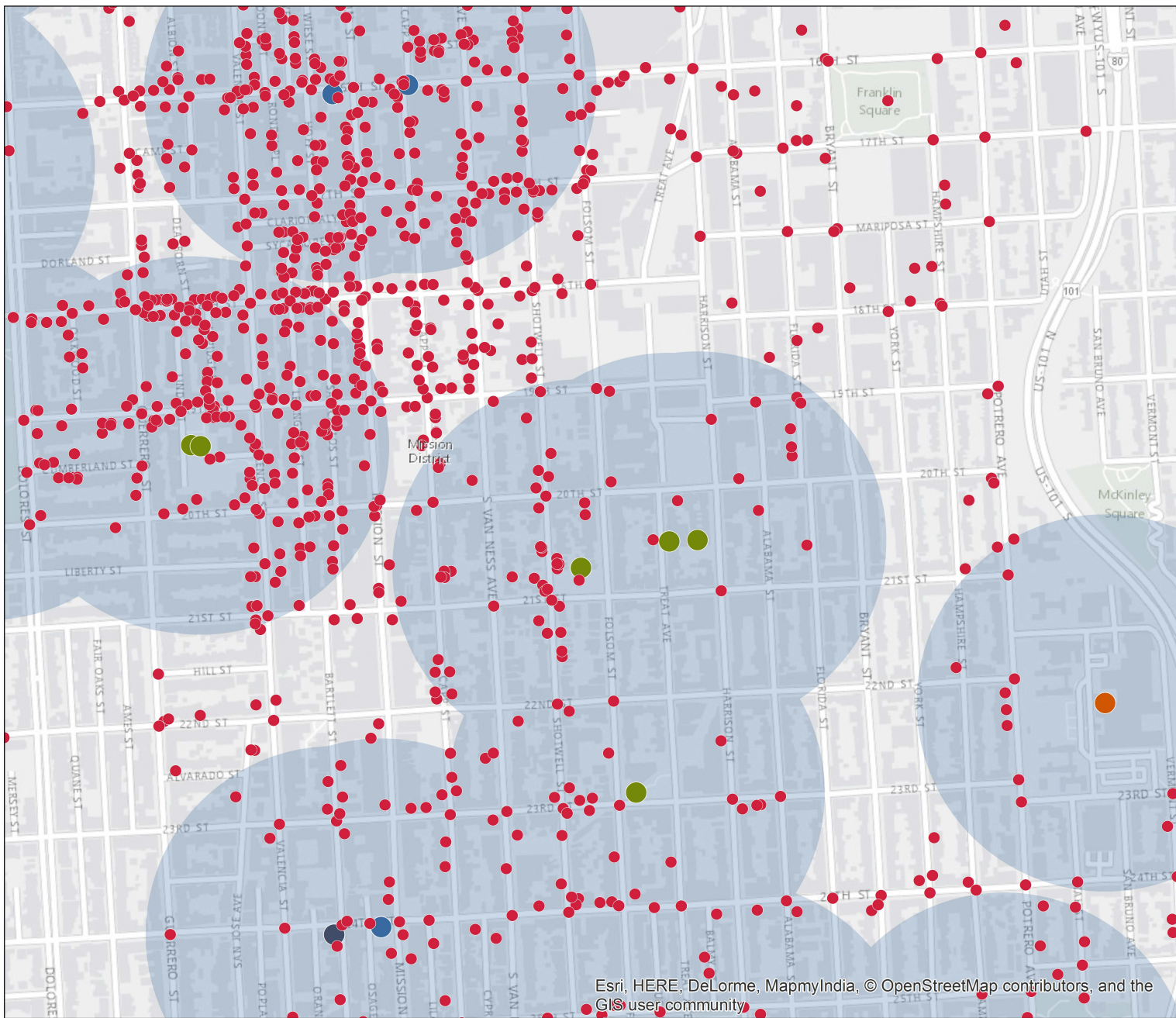
FIGURE 7B

OPPORTUNITIES FOR EXPANSION OF THE PIT STOP PROGRAM



October 2015

Sources: SF Recreation & Parks Department, SF Public Works, US Census Bureau, Applied Survey Research, DataSF



Esri, HERE, DeLorme, MapmyIndia, © OpenStreetMap contributors, and the GIS user community

Sources: San Francisco Recreation & Parks Department, San Francisco Public Works, DataSF

October 2015

FIGURE 8

**311 REQUESTS FOR STREET CLEANING IN
RELATION TO PUBLIC RESTROOMS IN THE MISSION**