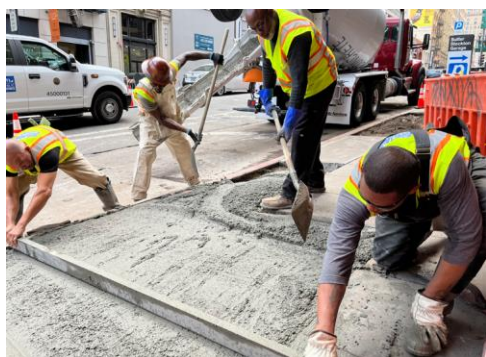
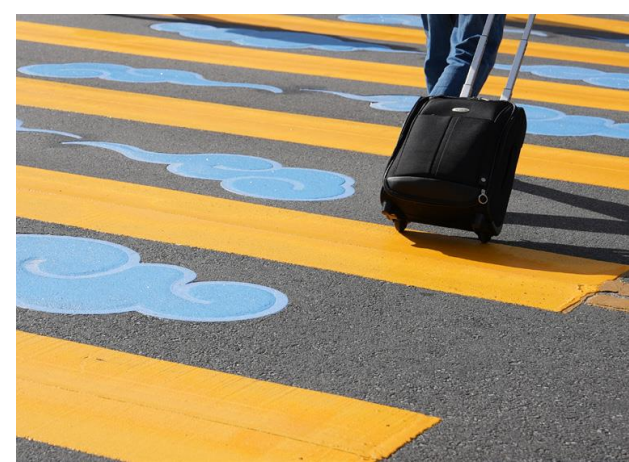




2024 Healthy, Safe and Vibrant San Francisco

GENERAL OBLIGATION BOND





2024 Health, Safe & Vibrant SF | Goals



Expand & Strengthen Public Health

Invest resources to ensure safe, resilient, and accessible public health infrastructure.



Support Homeless Families

Dedicate funding to address the increasing need for family housing and shelter.



Deliver Street Safety

Improve street and sidewalk design and improve street infrastructure.



Improve Community Spaces

Make improvements to civic spaces to provide welcoming gathering spaces for the public.



2024 Healthy, Safe & Vibrant SF | Proposed Allocations

Category	Example Projects	Proposed Allocation
Expand and Strengthen Public Health	Chinatown Public Health Center; City Clinic; ZSFG Building 3; Critical Repairs and Renovations at LHH & ZSFG	\$205.1M
Support Homeless Families	Flexible funding for shelter infrastructure to address homelessness	\$50M
Deliver Street Safety	Pedestrian & roadway safety, streetscape enhancements (e.g. Sloat Blvd. and other high injury corridors)	\$63.9M
Improve Community Spaces	Improved accessibility & design for public spaces (e.g. downtown, Harvey Milk Plaza, active recreation)	\$71M
Total		\$390M



Expand and Strengthen Public Health: \$205.1 Million



Chinatown Public Health Center Renovation

\$71,100,000



City Clinic Relocation

\$28,000,000



ZSFG Building 3 Retrofit

\$40,000,000



ZSFG & LHH Critical Repairs & Renovations

\$66,000,000



| Delivery of Quality Care Through Past Funding



Remodel and seismic retrofit:
Maxine Hall Health Center

Reopened:
October 2021



Remodel and seismic retrofit:
Castro-Mission Health Center

Reopened:
August 2022



Construction of new building:
Southeast Family Health Center

Opened:
July 2022



Construction of new building:
Maria X Martinez Health Resource Center

Opened:
September 2022

The 2024 Healthy, Safe and Vibrant San Francisco Bond will not raise property tax rates.

CHINATOWN PUBLIC HEALTH CENTER – Request: \$71,100,000

Structural Enhancement:

Renovations ensure a safer environment, reducing seismic vulnerability—

The Network's only Seismic Hazard Rating 4 clinic

Consolidate & Integrate Mental Health:

Co-locating Chinatown Child Development Center in CPHC will streamline access to mental health services and help CCDC move out of leased space

CCDC served 270 children last year in addition to children served through SFUSD outreach; co-locating will expand reach

Expand & Improve Services:

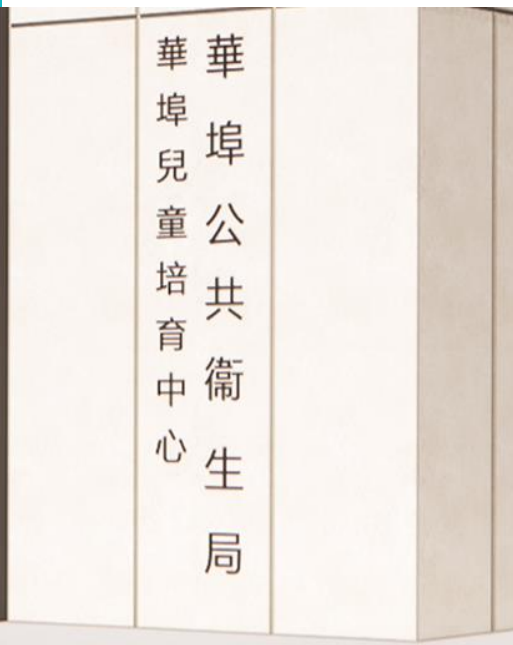
The project will expand primary care, mental health, and dental services, accommodating more patients in a more modern setting

Renovation adds 1 exam room and 1 dental chair

Culturally Responsive Care:

Renovation enables more and better services in languages reflective of the community's diversity

Majority of CPHC and CCDC patients are primarily Chinese-speaking



Shovel-Ready Project:

Thanks to Critical Project Development Funds, construction can start immediately



CITY CLINIC – Request: \$28,000,000



Efficiency, Modernization, and Reliability:

Relocating City Clinic will provide the team a modern space that meets clinic needs and allows the team to reliably serve patients

In 2024, City Clinic had to close to patients for 2 weeks due to failing mechanical systems in the converted firehouse where they serve patients

Improved Quality of Care:

Relocation will allow City Clinic to expand consultation and patient interview rooms

Providers counsel patients in cramped rooms without adequate cooling and the clinic lacks consultation rooms that fit the equipment required to treat patients

Increased Lab Efficiency and Reliability:

Moving will allow City Clinic to expand their lab space

Current lab is in a cramped room with inadequate temperature control compromising its ability to operate efficiently and reliably

ZSFG & LHH CRITICAL REPAIRS & RENOVATIONS – Request: \$66,000,000

Funding will help ZSFG and LHH complete projects that are most critical to safety, regulatory compliance and certification

If projects are delayed, costs will increase



Essential Infrastructure Renewal:

Urgent repairs are needed for aging infrastructure at ZSFG and LHH campuses to sustain critical patient services and remain operational and in regulatory compliance.

Safety Imperatives:

Current level of disrepair poses safety concerns for hospital patients, visitors, and staff

Compliance and Certification:

Many projects are critical to maintaining licensing, certification, and staying in regulatory compliance

If disrepair is cited by regulatory bodies, hospitals risk suspending critical services

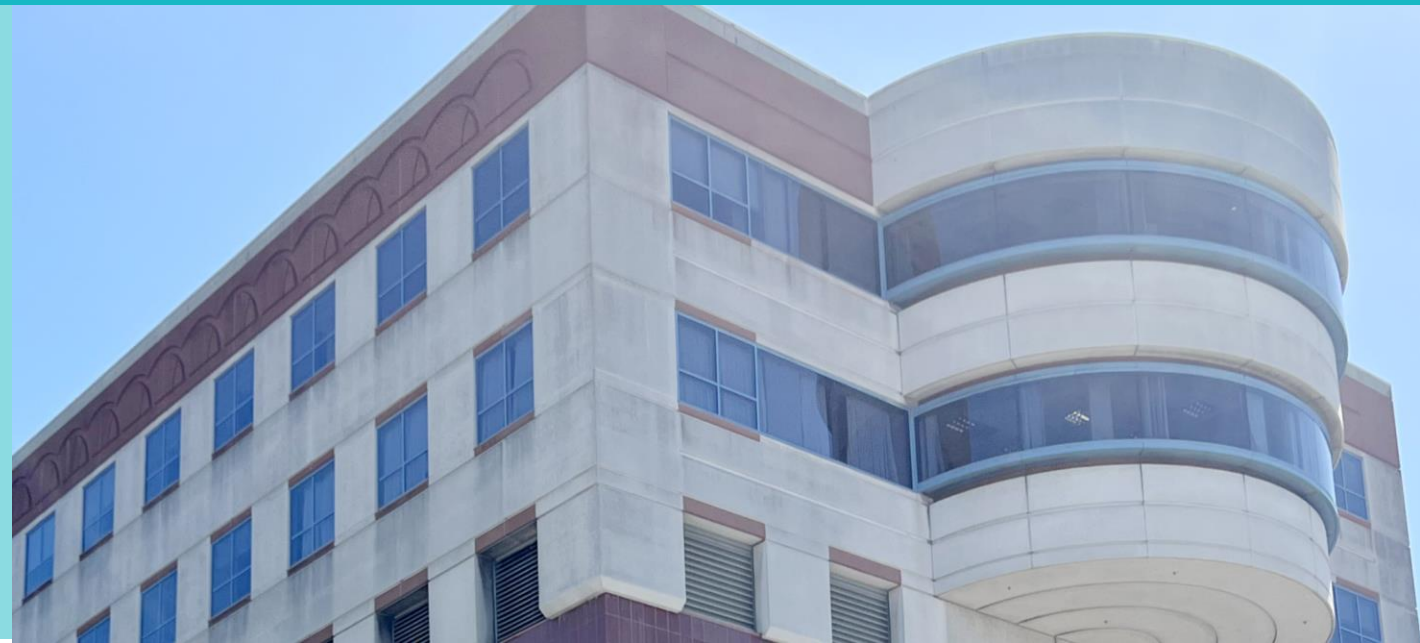
Financial Sustainability and Escalating Costs:

Leveraging bond dollars for these major projects reduces request in Pay-As-You-Go General Fund programs. In addition, cost and consequences of deferred maintenance will increase over time

For example, if ZSFG Building 5 fire alarms fail before they are replaced, ZSFG will pay over \$6M/year in fire watch services in addition to cost of replacement

ZSFG BUILDING 3 RETROFIT– Request: \$40,000,000

- Increasing seismically safe space at ZSFG will help ensure continuity of hospital services in the aftermath of an earthquake
- This project will add 65,000 sq ft of additional seismically safe useable space at ZSFG



Enhancing Safety Measures:

Retrofitting Building 3 aligns with DPH and City priorities to mitigate earthquake risks for employees and patients

This retrofit will strengthen a key public health resource against risk of partial or total collapse during a major earthquake

Expanded Seismic Safety:

Renovation will introduce 65,000 sq. ft. of additional seismically safe workspace to the ZSFG campus

This retrofit is part of DPH's Safe Building Program, which is increasing seismically safe square footage across the department.

Relocating Essential Employees:

With additional secure space, ZSFG can efficiently relocate employees from structurally vulnerable buildings to ensure their safety

Ensuring employee safety during a major earthquake ensures ZSFG can continue to operate in the aftermath

ADULT & EMERGENCY SHELTER – Request \$50,000,000



Deliver Family and Adult Emergency Shelter:

Funding will allow HSH to acquire, construct, renovate, or finance through private loans to developers, family and adult emergency shelters

Demand for family shelter beds has increased and now exceeds pre-pandemic levels

Reduce Racial Inequities:

San Francisco's homeless population is overrepresented by Black, indigenous, and people of color. Additional funding will allow the City to better serve these disproportionately affected groups

38% of unhoused residents are Black, African American, or African, and 30% of unhoused residents are Hispanic/Latinx, despite only representing 6% and 16%, respectively, of San Francisco's population



Deliver Street Safety: \$63.9 Million



Street Safety Priorities:



Pedestrian & Bicycle Safety Improvements



Traffic Signal Infrastructure Improvements

Streetscape Improvements

PEDESTRIAN & BICYCLE SAFETY

Support a Transit-First City:

San Francisco is a walkable city, and even when using public transit, every transit trip begins and ends with a walk

Modernizing street design to account for the needs of bicyclists and pedestrians, including people with disabilities, will ensure all people can travel safely

Supporting Local Businesses and Building Community:

Streets in good condition create a safer and more inviting environment for everyone.

Safer streets increase opportunities for people to congregate in community areas, access local shops, and feel safe in their neighborhoods.



TRAFFIC SIGNAL INFRASTRUCTURE IMPROVEMENTS



Support a Transit-First City:

Reliability of public transit is one of the most important factors influencing a person's decision to use public transit

This bond will invest in improvements to reduce traffic bottlenecks and keep traffic moving on main thoroughfares, improving transit reliability

Prioritize Improving San Francisco's High Injury Network:

The City's High Injury Network flags streets where most serious traffic injuries occur

Improvements, such as modernizing traffic signal infrastructure and enhancing safety at pedestrian crossings can reduce injuries on these high-priority streets

Advance Equity:

Streets in historically disadvantaged communities are twice as likely to be on the High Injury Network

Improving High Injury Network streets advances equitable access to safe transportation options

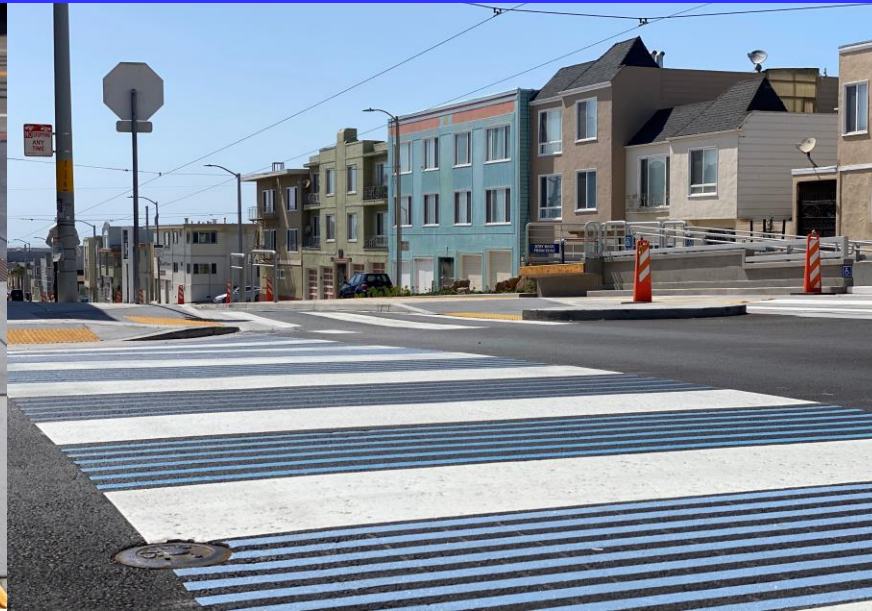
STREETSCAPE IMPROVEMENTS



Coordinated Infrastructure Upgrades:

Improve resiliency of public infrastructure by leveraging street improvements with utility upgrades

Minimize disruption to residents and businesses by timing projects to dig-once policy



Neighborhood Beautification and Greening:

Support the City's economic recovery and climate action initiatives through ecological project elements, including street trees, landscaping and stormwater gardens

Designing streets to include elements that provide traffic calming, improve drainage to reduce flooding, and improve pedestrian visibility.



Street Resurfacing and Expanded Accessibility:

Create safer streets through strategic paving and provide expanded curb ramp ADA compliance in the High Injury Network as part of larger street safety improvement projects

Improving and maintaining City streets and curb ramps improves safety and accessibility

Improve Community Spaces: \$71 Million



Harvey Milk Plaza

\$25,000,000

Downtown Improvements

\$41,000,000

Modernizing Recreational Spaces

\$5,000,000

HARVEY MILK PLAZA

Improve Plaza Accessibility:

This project will add elevator access to Harvey Milk Plaza in addition to improving streets and paths in the plaza's vicinity

Funding will expand accessibility to this important transit hub

Honor Harvey Milk's Legacy:

In addition to accessibility improvements, this bond will fund memorial elements to honor Harvey Milk's legacy in San Francisco

This renovation will create a welcoming public gathering space to serve as a new, iconic gateway to the historic Castro neighborhood that honors Harvey Milk



DOWNTOWN IMPROVEMENTS



Revitalize Downtown San Francisco:

There has been a significant increase in office vacancy rates after the COVID-19 pandemic, reducing sales tax revenue that funds critical City services

Improvements in and around Union Square and other downtown areas aim to increase foot traffic and improve the downtown retail storefront economy

Improve the Pedestrian Experience:

Investments could include improvements in the public right of way near Powell & Market, and improvements to accessibility and connections between transit and the downtown area

An example of potential improvements could be accessibility improvements to Hallidie Plaza, which has insufficient elevator access

MODERNIZING RECREATIONAL SPACES



Enhance the Visitor Experience:

Investing in public open spaces will allow for more recreational programming for events

These improvements will help create a vibrant, welcoming place for residents and visitors and will increase economic activity in the city

Improve Safety and Accessibility:

Modernizing recreational spaces also means making them safe and accessible for more people

Improvements to recreational spaces could include improved lighting to help people feel safe in their parks, while paving paths to expand park accessibility

Thank you.