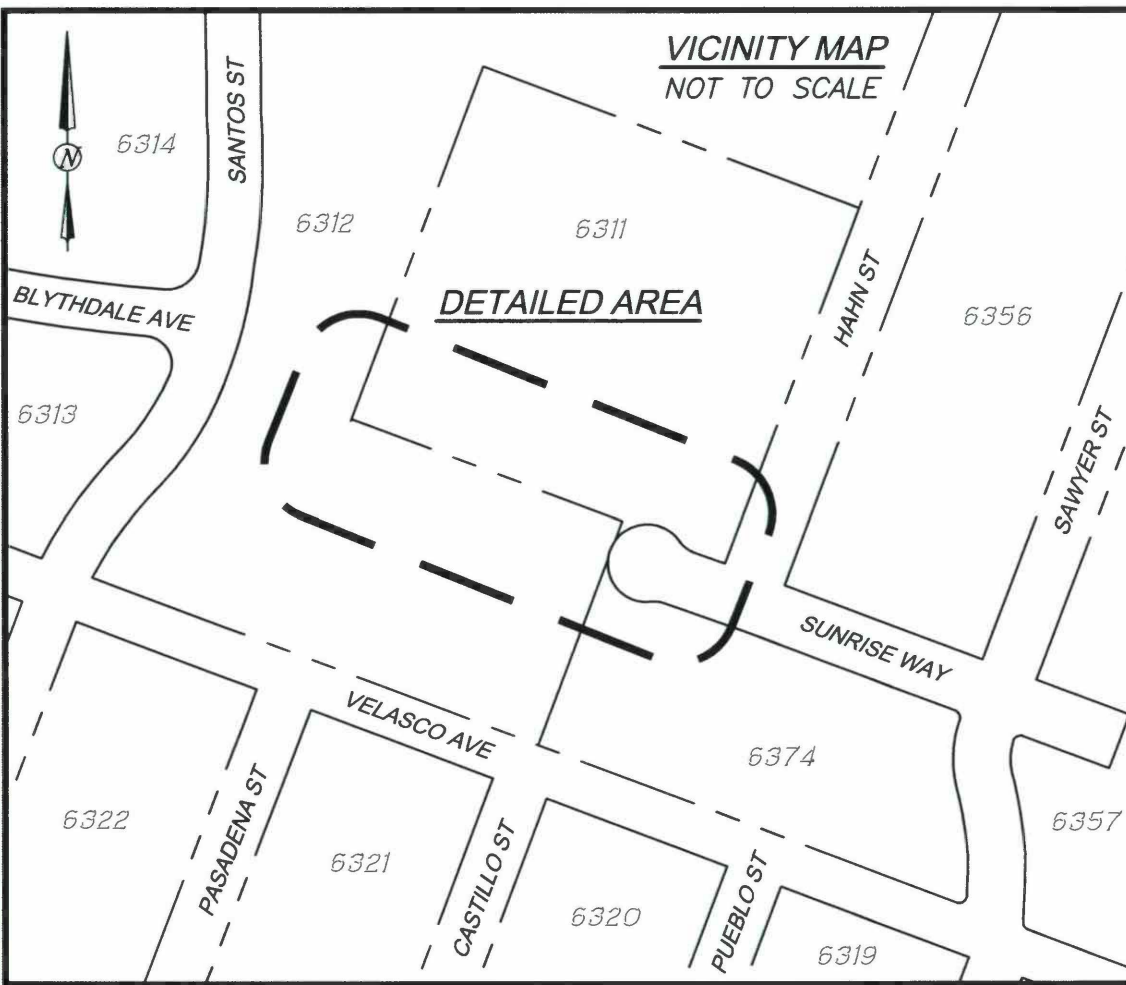
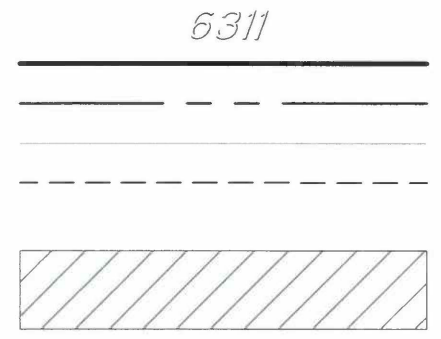


Jawong May 26, 2022 - 10:30am J:\Survey\Sidewalk Changes\2020\2020_005 - Sunnydale HOPE SF\DWG\AB 6312 LOT 011_Sunrise Way.dwg



LEGEND



ASSESSORS BLOCK NUMBER
 NEW CURB LINE
 PROPERTY LINE
 EXISTING OFFICIAL CURB TO REMAIN
 EXISTING OFFICIAL CURB TO BE REMOVED

 AREA UNDER SFPW JURISDICTION FOR MAINTENANCE,
 SEE SHEET 3 OF 3

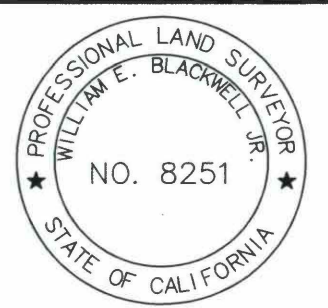
LINE TABLE		
LINE #	LENGTH	BEARING
L1	1.00	S69°20'01"E
L2	20.13	N69°20'01"W
L3	27.60	N69°20'01"W
L4	43.20	N69°20'01"W

LINE TABLE		
LINE #	LENGTH	BEARING
L5	71.03	N69°20'01"W
L6	46.57	S69°20'01"E
L7	47.32	N69°20'01"W
L8	74.74	S69°20'01"E

LINE TABLE		
LINE #	LENGTH	BEARING
L9	37.08	S69°20'01"E
L10	33.16	N69°20'01"W
L11	17.74	S69°20'01"E
L12	66.92	N69°20'01"W

CURVE TABLE			
CURVE #	LENGTH	RADIUS	DELTA
C1	29.41	20.00	84°15'39"
C2	31.42	20.00	90°00'00"
C3	6.44	10.00	36°52'12"
C4	12.87	20.00	36°52'12"
C5	12.87	20.00	36°52'11"
C6	6.44	10.00	36°52'12"
C7	6.44	10.00	36°52'12"
C8	12.88	20.00	36°53'30"
C9	12.87	20.00	36°52'08"
C10	6.44	10.00	36°52'12"
C11	5.22	10.00	29°55'35"

CURVE TABLE			
CURVE #	LENGTH	RADIUS	DELTA
C12	10.46	20.00	29°57'48"
C13	10.46	20.00	29°57'48"
C14	5.22	10.00	29°55'35"
C15	6.44	10.00	36°52'12"
C16	12.87	20.00	36°52'08"
C17	12.87	20.00	36°52'12"
C18	6.44	10.00	36°52'12"
C19	6.44	10.00	36°52'12"
C20	12.87	20.00	36°52'12"
C21	11.71	20.00	33°33'26"
C22	5.86	10.00	33°33'26"



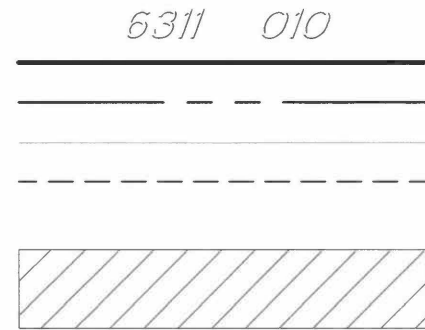
APPROVED:

 WILLIAM E. BLACKWELL JR., PLS 8251
 ACTING CITY & COUNTY SURVEYOR

 5/26/22
 DATE

CITY AND COUNTY OF SAN FRANCISCO
SAN FRANCISCO PUBLIC WORKS
 OFFICIAL SIDEWALK CHANGES AND SIDEWALK WIDTHS FOR SUNRISE WAY BETWEEN
 HAHN STREET AND MALOSI STREET, FRONTING AB 6311 LOT 011 & AB 6312 LOT 010
 FILE: Q-20-1160 SHEET 1 OF 3 SCALE: 1" = 30' REVISION

LEGEND



ASSESSORS BLOCK AND LOT NUMBER
 NEW CURB LINE
 PROPERTY LINE
 EXISTING OFFICIAL CURB TO REMAIN
 EXISTING OFFICIAL CURB TO BE REMOVED

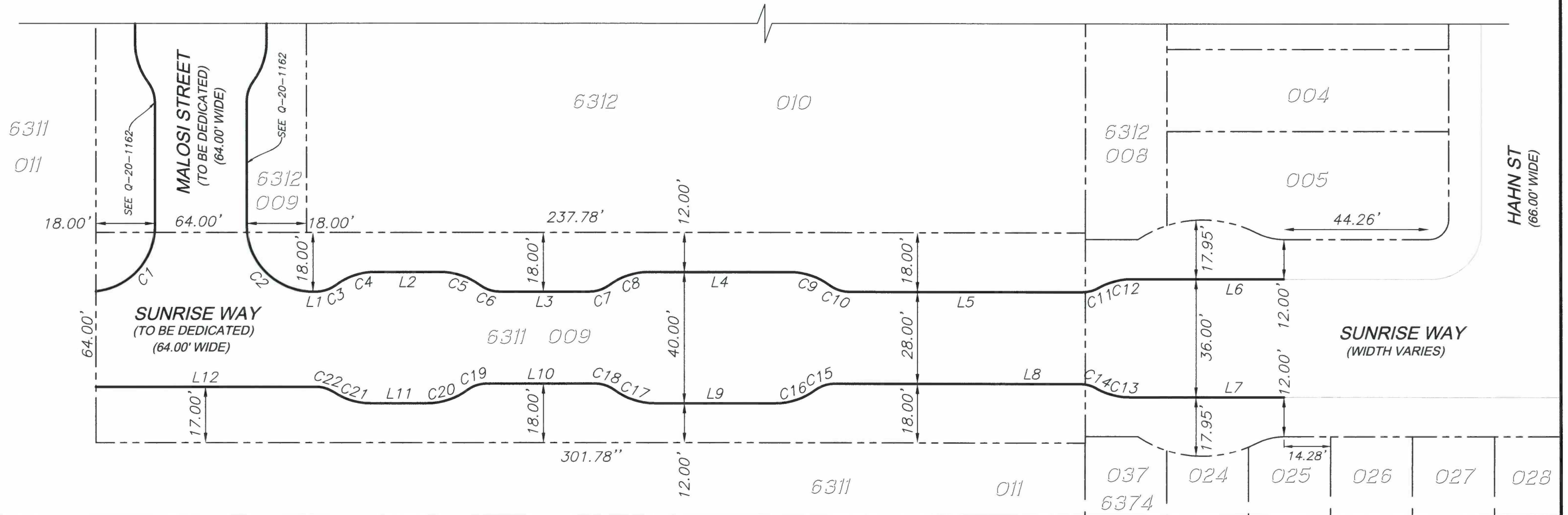
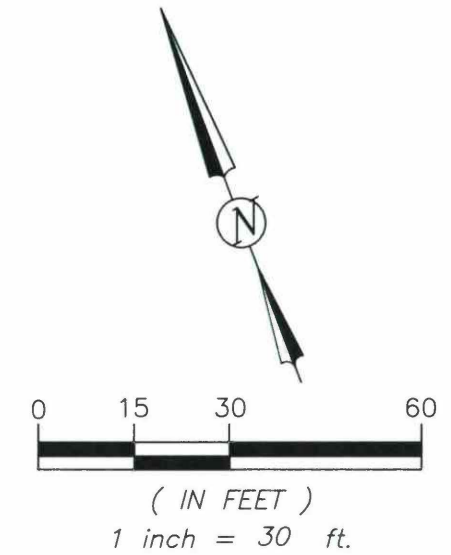
 AREA UNDER SFPW JURISDICTION FOR MAINTENANCE,
 SEE SHEET 3 OF 3

MAP REFERENCES:

Q-18-026 TITLED "TENTATIVE
 MAP #1 SUN VALLEY
 SUBDIVISION" DATED FEBRUARY
 1946 ON FILE WITH OFFICE OF
 THE CITY AND COUNTY
 SURVEYOR.

OFFICIAL GRADE MAP NO. 248
 ON FILE WITH OFFICE OF THE
 CITY AND COUNTY SURVEYOR.

OFFICIAL GRADE MAP NO. 272
 ON FILE WITH OFFICE OF THE
 CITY AND COUNTY SURVEYOR.



APPROVED:


 WILLIAM E. BLACKWELL JR., PLS 8251
 ACTING CITY & COUNTY SURVEYOR

 5/26/22
 DATE

CITY AND COUNTY OF SAN FRANCISCO
SAN FRANCISCO PUBLIC WORKS
 OFFICIAL SIDEWALK CHANGES AND SIDEWALK WIDTHS FOR SUNRISE WAY BETWEEN
 HAHN STREET AND MALOSI STREET, FRONTING AB 6311 LOT 011 & AB 6312 LOT 010
 FILE: Q-20-1160 SHEET 2 OF 3 SCALE: 1" = 30' REVISION

J:\Survey\Sidewalk Changes\2020\2020_005 - Sunnydale HDPE SF\DWG\AB 6312 LOT 011_Sunrise Way.dwg
 May 26, 2022 - 10:31am J:\Survey\Sidewalk Changes\2020\2020_005 - Sunnydale HDPE SF\DWG\AB 6312 LOT 011_Sunrise Way.dwg
 J:\Survey\Sidewalk Changes\2020\2020_005 - Sunnydale HDPE SF\DWG\AB 6312 LOT 011_Sunrise Way.dwg

LEGEND

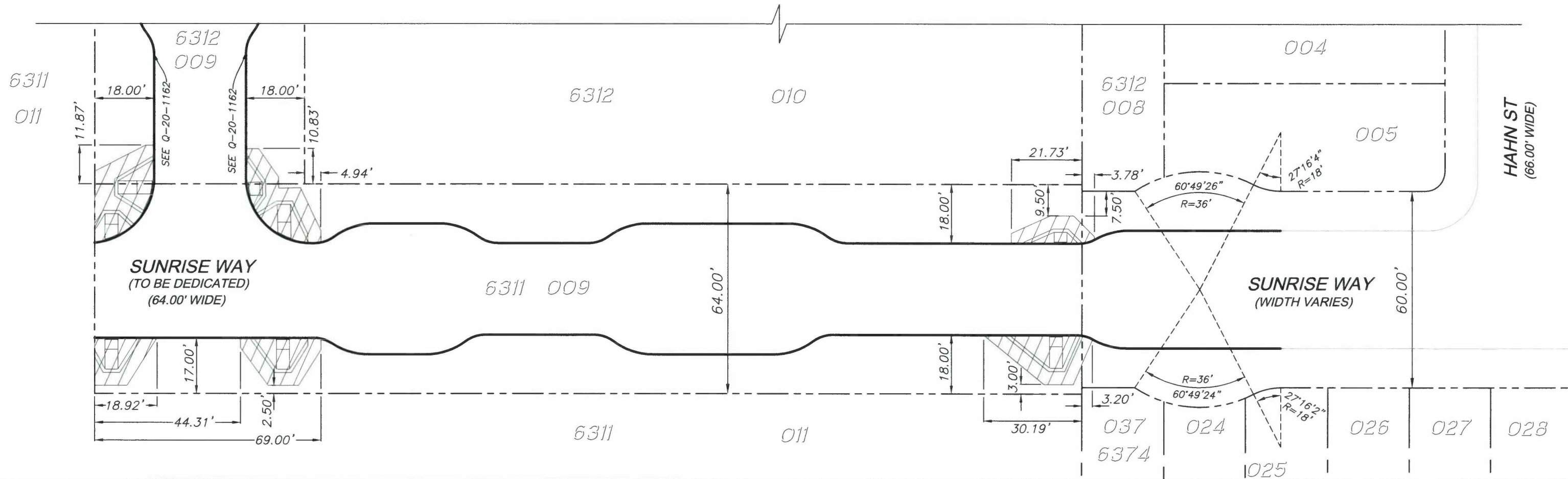
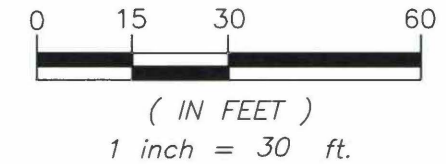
- 6311 010 ASSESSORS BLOCK AND LOT NUMBER
- NEW CURB LINE
- - - PROPERTY LINE
- EXISTING OFFICIAL CURB TO REMAIN
- - - EXISTING OFFICIAL CURB TO BE REMOVED
-  AREA UNDER SFPW JURISDICTION FOR MAINTENANCE

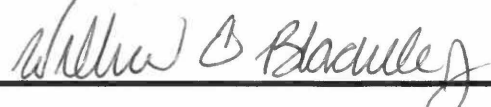
MAP REFERENCES:

Q-18-026 TITLED "TENTATIVE MAP #1 SUN VALLEY SUBDIVISION" DATED FEBRUARY 1946 ON FILE WITH OFFICE OF THE CITY AND COUNTY SURVEYOR.

OFFICIAL GRADE MAP NO. 248 ON FILE WITH OFFICE OF THE CITY AND COUNTY SURVEYOR.

OFFICIAL GRADE MAP NO. 272 ON FILE WITH OFFICE OF THE CITY AND COUNTY SURVEYOR.



APPROVED:

 WILLIAM E. BLACKWELL JR., PLS 8251
 ACTING CITY & COUNTY SURVEYOR

5/26/22
 DATE

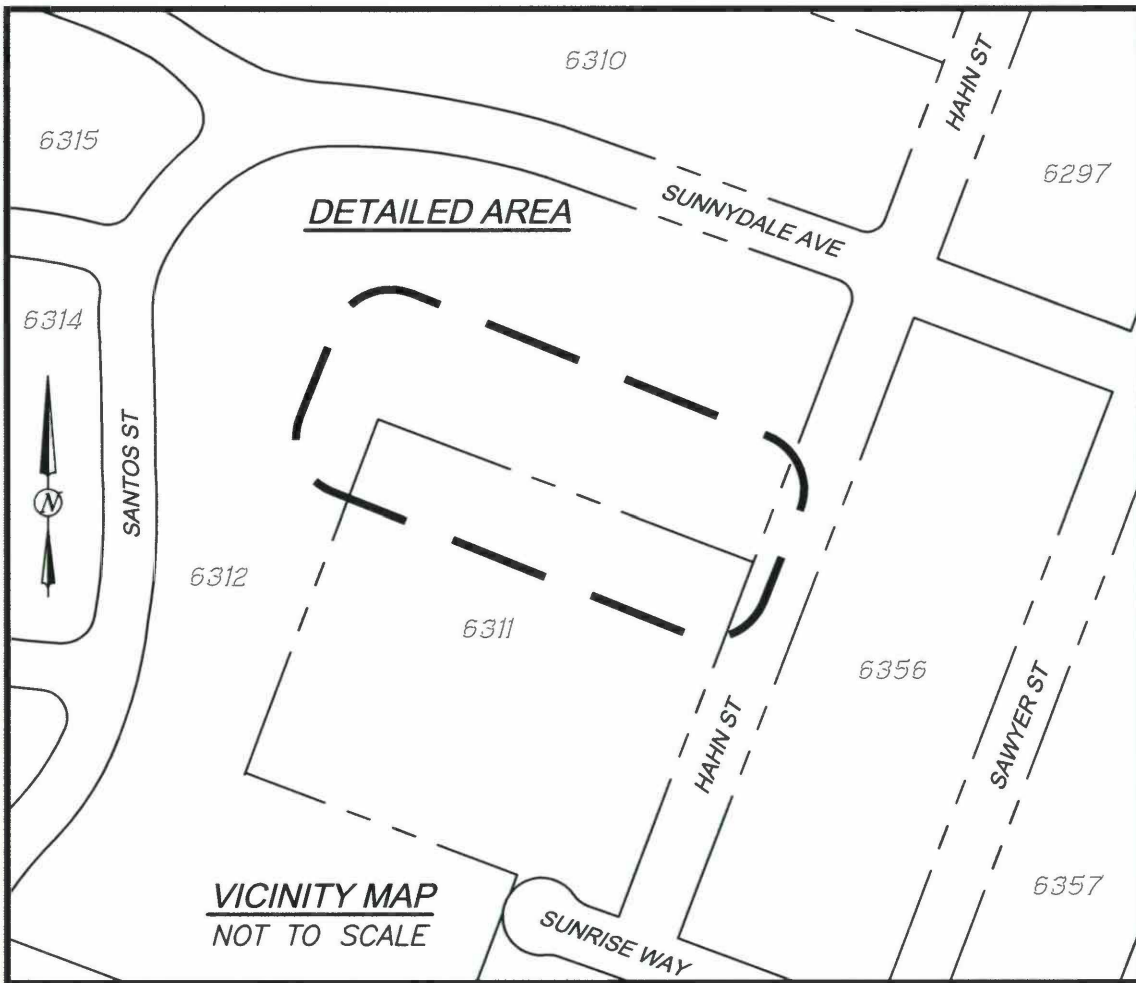
CITY AND COUNTY OF SAN FRANCISCO
SAN FRANCISCO PUBLIC WORKS

OFFICIAL SIDEWALK CHANGES AND SIDEWALK WIDTHS FOR SUNRISE WAY BETWEEN HAHN STREET AND MALOSI STREET, FRONTING AB 6311 LOT 011 & AB 6312 LOT 010

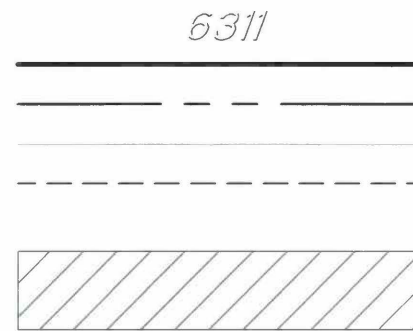
FILE: Q-20-1160	SHEET 3 OF 3	SCALE: 1" = 30'	REVISION
-----------------	--------------	-----------------	----------

May 26, 2022 - 10:36am J:\Survey\Sidewalk Changes\2020\2020_005 - Sunnydale HOPE SF\DWG\AB 6312 LOT 011_Sunrise Way.dwg
 Jarong

Jawong May 26, 2022 - 10:41am J:\Survey\Sidewalk Changes\2020\2020_005 - Sunnydale HDPE SF.DWG\AB 6312 LOT 010_Harmonia St.dwg



LEGEND



ASSESSORS BLOCK NUMBER

NEW CURB LINE

PROPERTY LINE

EXISTING OFFICIAL CURB TO REMAIN

EXISTING OFFICIAL CURB TO BE REMOVED

AREA UNDER SFPW JURISDICTION FOR MAINTENANCE,
SEE SHEET 3 OF 3

LINE TABLE		
LINE #	LENGTH	BEARING
L1	23.72	S69°20'01"E
L2	286.91	N69°20'01"W
L3	17.19	S69°20'01"E
L4	11.02	S20°49'57"W
L5	10.98	N20°39'58"E
L6	124.12	N69°20'01"W
L7	164.99	N69°20'01"W
L8	3.67	N69°20'01"W

CURVE TABLE			
CURVE #	LENGTH	RADIUS	DELTA
C1	31.42	20.00	89°59'58"
C2	7.48	10.00	42°50'00"
C3	14.95	20.00	42°49'58"
C4	14.95	20.00	42°50'00"
C5	7.48	10.00	42°50'00"
C6	25.13	16.00	90°00'00"
C7	25.15	16.00	90°04'42"
C8	6.44	10.00	36°52'12"
C9	12.87	20.00	36°52'12"
C10	12.87	20.00	36°52'12"
C11	6.44	10.00	36°52'12"
C12	50.27	32.00	90°00'00"

MAP REFERENCES:

STREET VACATION MAP TITLED "SUR 2018-002" DATED DECEMBER 19, 2019 ON FILE WITH OFFICE OF THE CITY AND COUNTY SURVEYOR.

Q-12-019 TITLED "SUNNYDALE HOUSING PROJECT CAL.-1-3" DATED NOVEMBER 22, 1939 ON FILE WITH OFFICE OF THE CITY AND COUNTY SURVEYOR.

OFFICIAL GRADE MAP NO. 248 ON FILE WITH OFFICE OF THE CITY AND COUNTY SURVEYOR.



APPROVED:

William E. Blackwell Jr.
 WILLIAM E. BLACKWELL JR., PLS 8251
 ACTING CITY & COUNTY SURVEYOR

5/26/22
 DATE

**CITY AND COUNTY OF SAN FRANCISCO
 SAN FRANCISCO PUBLIC WORKS**

OFFICIAL SIDEWALK WIDTHS OF HARMONIA STREET BETWEEN HAHN STREET AND MALOSI STREET, FRONTING AB 6312 LOT 010 & AB 6311 LOTS 002 & 011

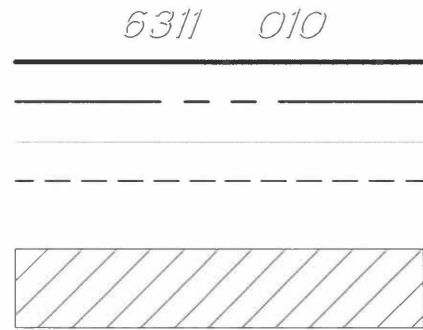
FILE: Q-20-1161

SHEET 1 OF 3

SCALE: 1" = 30'

REVISION

LEGEND

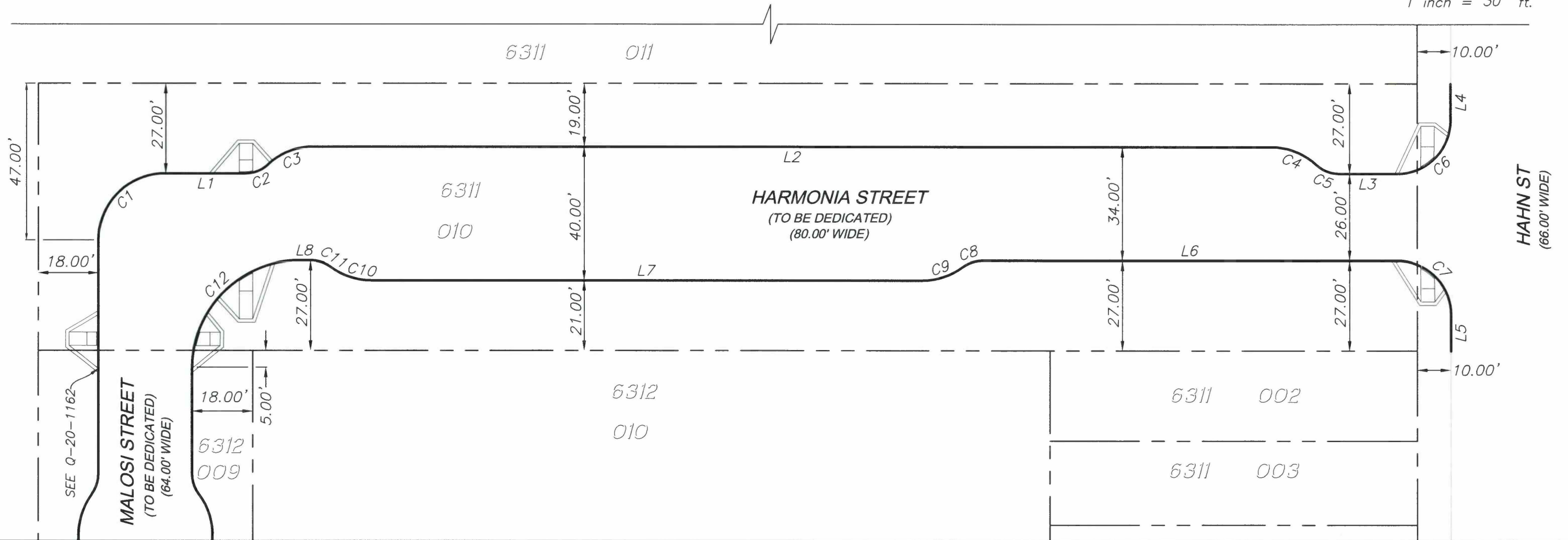
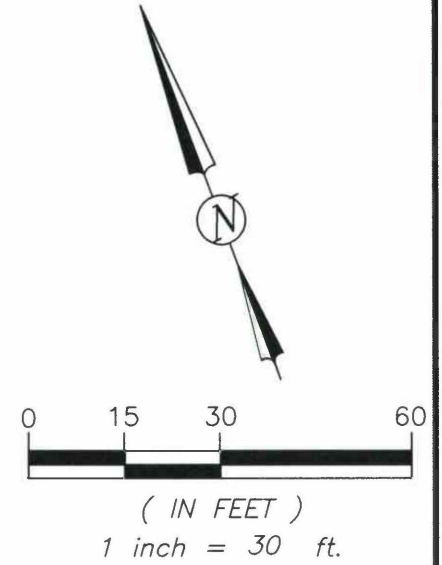


ASSESSORS BLOCK AND LOT NUMBER
 NEW CURB LINE
 PROPERTY LINE
 EXISTING OFFICIAL CURB TO REMAIN
 EXISTING OFFICIAL CURB TO BE REMOVED

AREA UNDER SFPW JURISDICTION FOR MAINTENANCE,
 SEE SHEET 3 OF 3

MAP REFERENCE:

OFFICIAL GRADE MAP NO. 248
 ON FILE WITH OFFICE OF THE
 CITY AND COUNTY SURVEYOR.



APPROVED:

 WILLIAM E. BLACKWELL JR., PLS 8251
 ACTING CITY & COUNTY SURVEYOR

5/26/22
 DATE

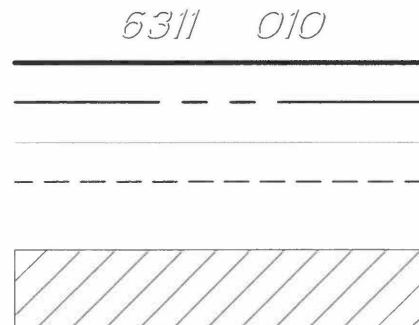
CITY AND COUNTY OF SAN FRANCISCO
 SAN FRANCISCO PUBLIC WORKS

OFFICIAL SIDEWALK WIDTHS OF HARMONIA STREET BETWEEN HAHN STREET AND MALOSI STREET, FRONTING AB 6312 LOT 010 & AB 6311 LOTS 002 & 011

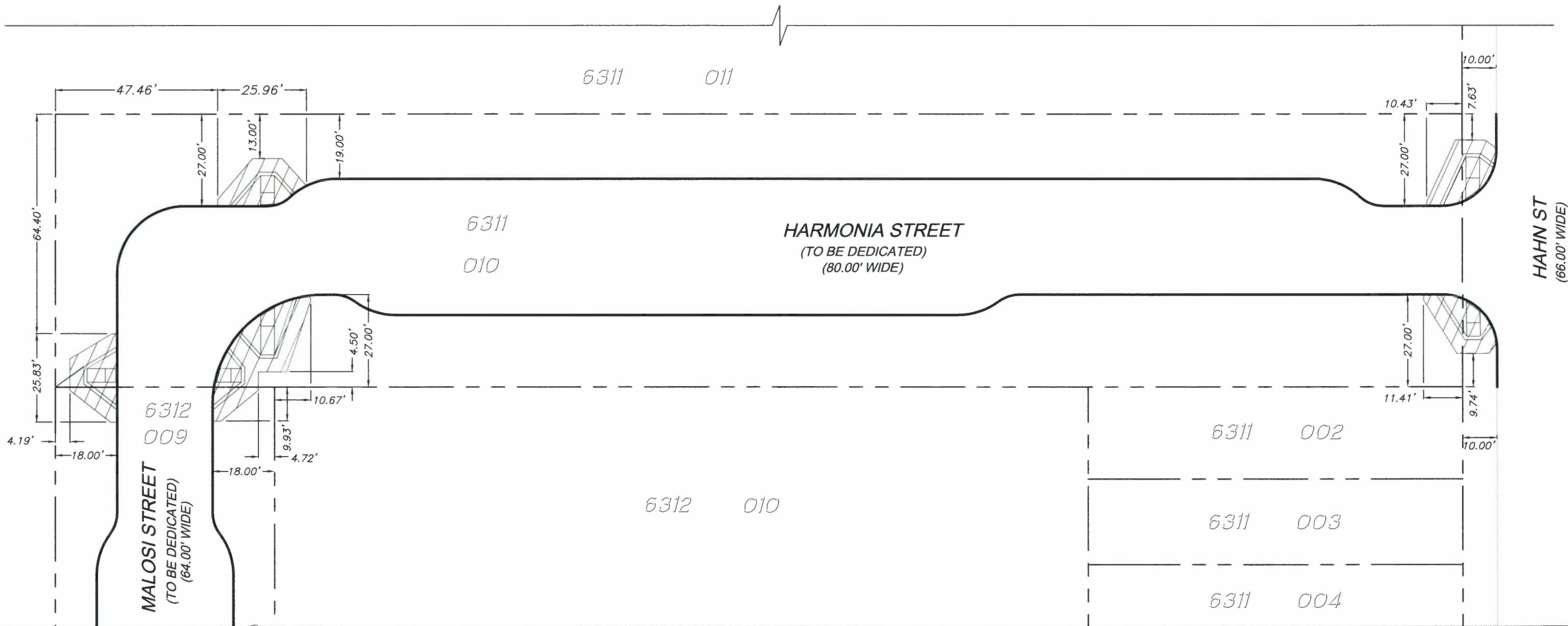
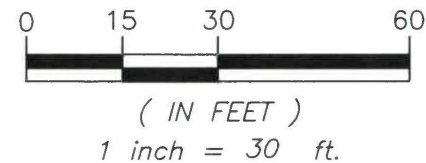
FILE: Q-20-1161	SHEET 2 OF 3	SCALE: 1" = 30'	REVISION
-----------------	--------------	-----------------	----------

Jawong May 26, 2022 - 10:41am J:\Survey\Sidewalk Changes\2020\2020_005 - Sunnydale HOPE SF\DWG\AB 6312 LOT 011_Harmonia St.dwg

LEGEND



ASSESSORS BLOCK AND LOT NUMBER
 NEW CURB LINE
 PROPERTY LINE
 EXISTING OFFICIAL CURB TO REMAIN
 EXISTING OFFICIAL CURB TO BE REMOVED
 AREA UNDER SFPW JURISDICTION FOR MAINTENANCE



Jawong May 26, 2022 - 10:42am J:\Survey\Sidewalk Changes\2020\2020_005 - Sunnydale HOPE SF\DWG\AB 6312 LOT 011_Harmonia St.dwg



APPROVED:

 WILLIAM E. BLACKWELL JR., PLS 8251
 ACTING CITY & COUNTY SURVEYOR

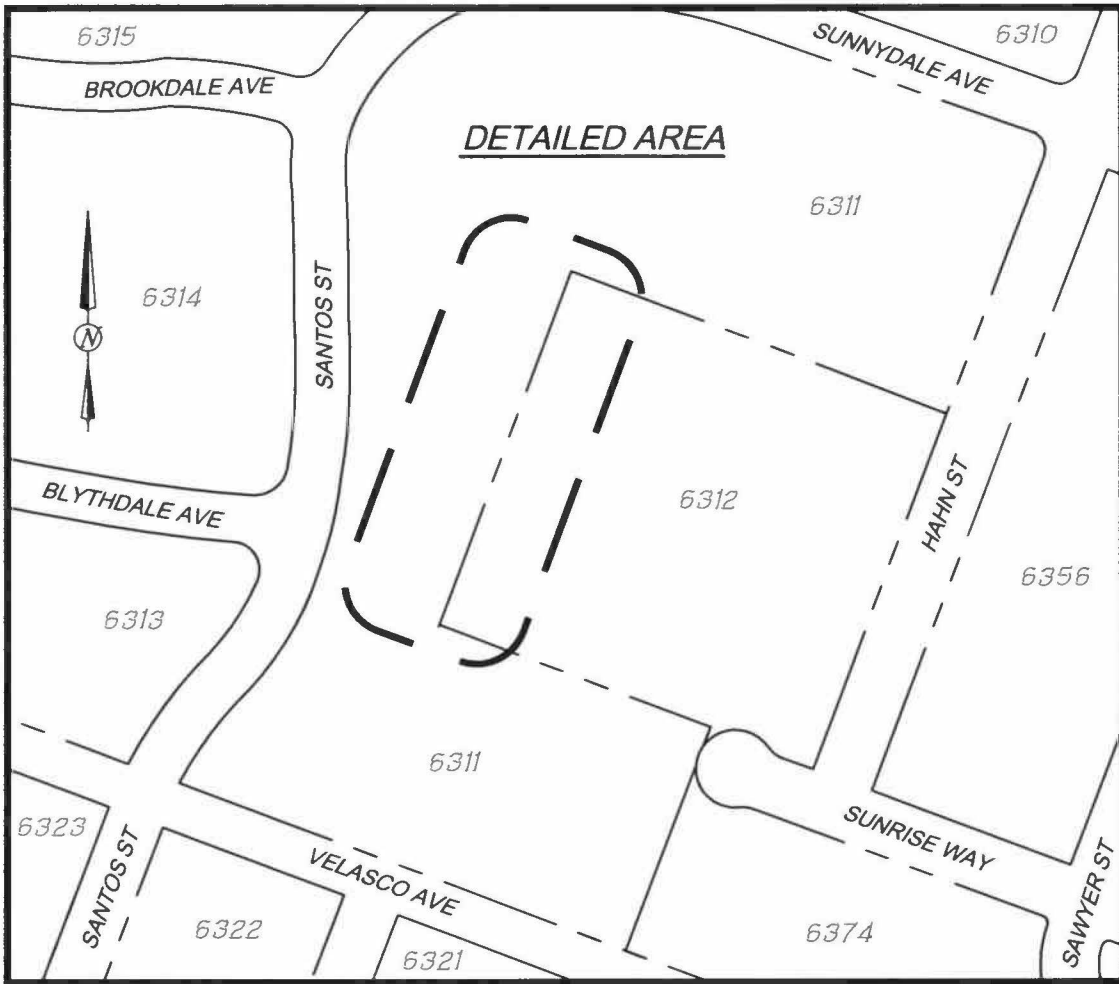
5/24/22
 DATE

CITY AND COUNTY OF SAN FRANCISCO
 SAN FRANCISCO PUBLIC WORKS

OFFICIAL SIDEWALK WIDTHS OF HARMONIA STREET BETWEEN HAHN STREET AND MALOSI STREET, FRONTING AB 6312 LOT 010 & AB 6311 LOTS 002 & 011

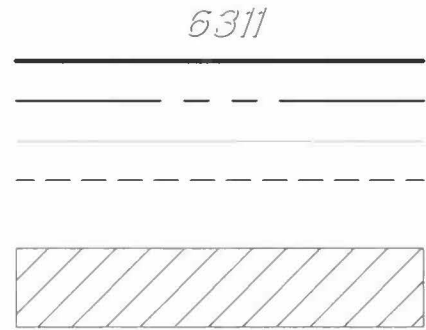
FILE: Q-20-1161	SHEET 3 OF 3	SCALE: 1" = 30'	REVISION
-----------------	--------------	-----------------	----------

May 26, 2022 - 10:45am J:\Survey\Sidewalk Changes\2020\2020_005 - Sunnydale HDPE SF\DWG\AB 6312 LOT 011_Malosi St.dwg
 Jarong



VICINITY MAP
NOT TO SCALE

LEGEND



6311
 ASSESSORS BLOCK NUMBER
 NEW CURB LINE
 PROPERTY LINE
 EXISTING OFFICIAL CURB TO REMAIN
 EXISTING OFFICIAL CURB TO BE REMOVED
 AREA UNDER SFPW JURISDICTION FOR
 MAINTENANCE, SEE SHEET 2 OF 2

REFERENCE(S):

Q-12-019 TITLED "SUNNYDALE
 HOUSING PROJECT CAL.-1-3"
 DATED NOVEMBER 22, 1939 ON
 FILE WITH OFFICE OF THE CITY
 AND COUNTY SURVEYOR.
 OFFICIAL GRADE MAP NO. 248 ON
 FILE WITH OFFICE OF THE CITY
 AND COUNTY SURVEYOR.

LINE TABLE		
LINE #	LENGTH	BEARING
L1	37.77	S20°39'58"W
L2	286.77	N20°39'58"E
L3	69.89	S20°39'58"W
L4	31.89	S20°39'58"W
L5	286.39	N20°39'58"E
L6	38.15	S20°39'58"W

CURVE TABLE			
CURVE #	LENGTH	RADIUS	DELTA
C1	6.44	10.00	36°52'13"
C2	12.81	20.00	36°41'37"
C3	12.56	20.00	35°59'35"
C4	6.44	10.00	36°52'38"
C5	6.44	10.00	36°52'12"
C6	12.56	20.00	35°59'35"
C7	12.81	20.00	36°41'37"
C8	6.44	10.00	36°52'11"

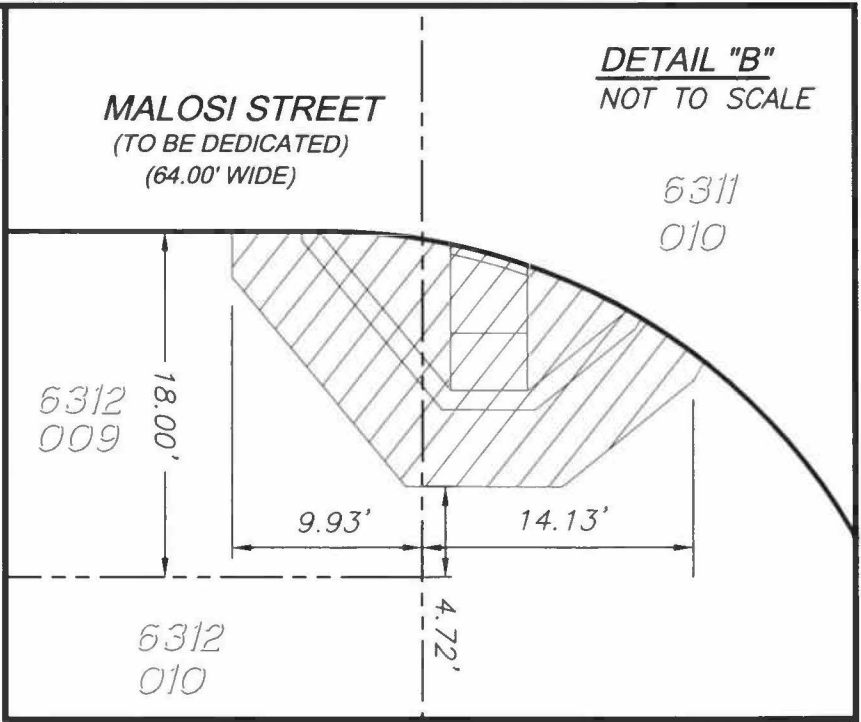
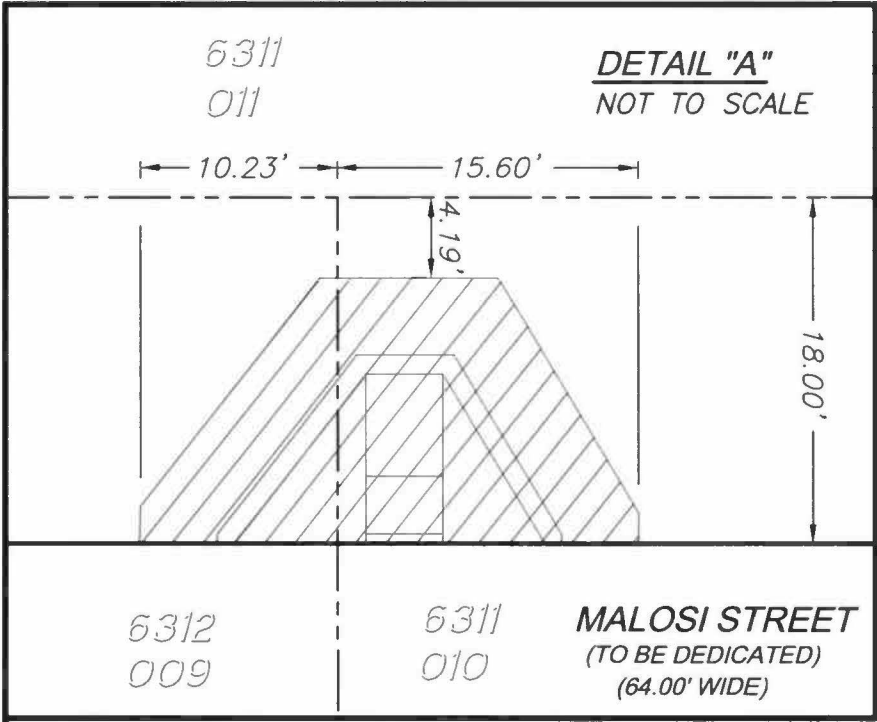


APPROVED:

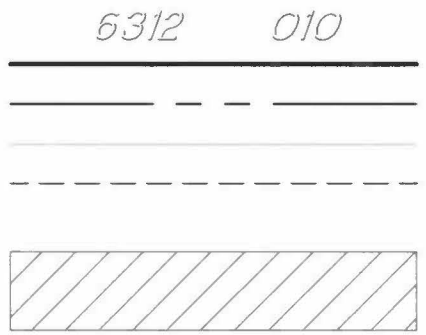
 WILLIAM E. BLACKWELL JR., PLS 8251
 ACTING CITY & COUNTY SURVEYOR
 DATE: 5/29/22

CITY AND COUNTY OF SAN FRANCISCO
SAN FRANCISCO PUBLIC WORKS
 OFFICIAL SIDEWALK WIDTHS OF MALOSI STREET BETWEEN SUNRISE WAY AND HARMONIA STREET, FRONTING AB 6311 LOT 011 AND AB 6312 LOT 010
 FILE: Q-20-1162 SHEET 1 OF 2 SCALE: 1" = 30' REVISION

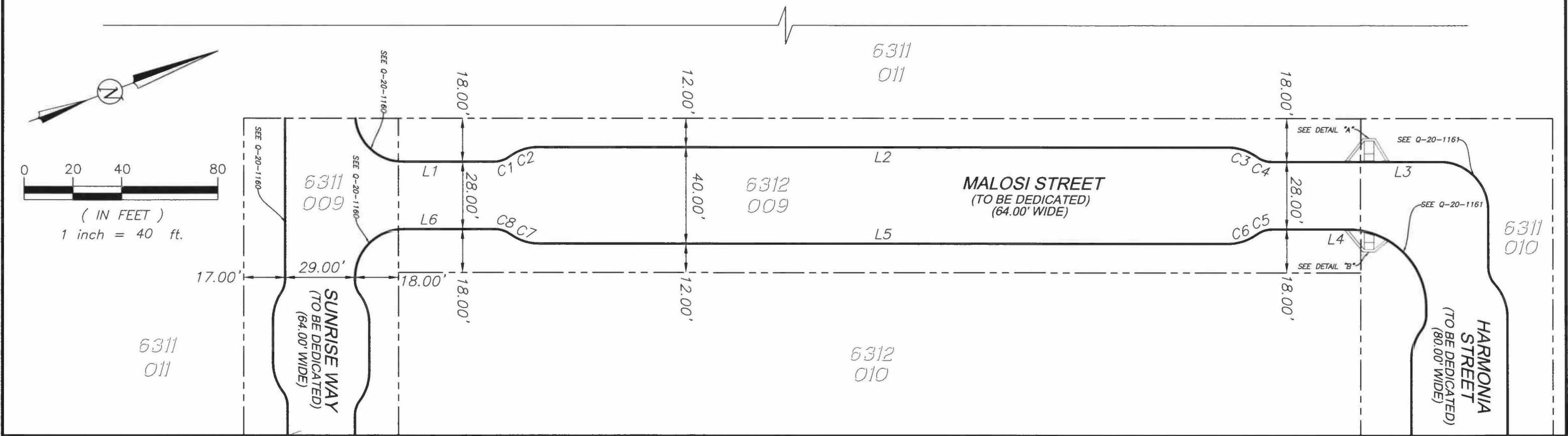
Jawong May 26, 2022 - 10:45am J:\Survey\Sidewalk Changes\2020\2020_005 - Sunnydale HOPE SF\DWG\AB 6312 LOT 011_Malosi St.dwg



LEGEND



ASSESSORS BLOCK AND LOT NUMBER
 NEW CURB LINE
 PROPERTY LINE
 EXISTING OFFICIAL CURB TO REMAIN
 EXISTING OFFICIAL CURB TO BE REMOVED
 AREA UNDER SFPW JURISDICTION FOR MAINTENANCE



APPROVED:

 WILLIAM E. BLACKWELL JR., PLS 8251
 ACTING CITY & COUNTY SURVEYOR

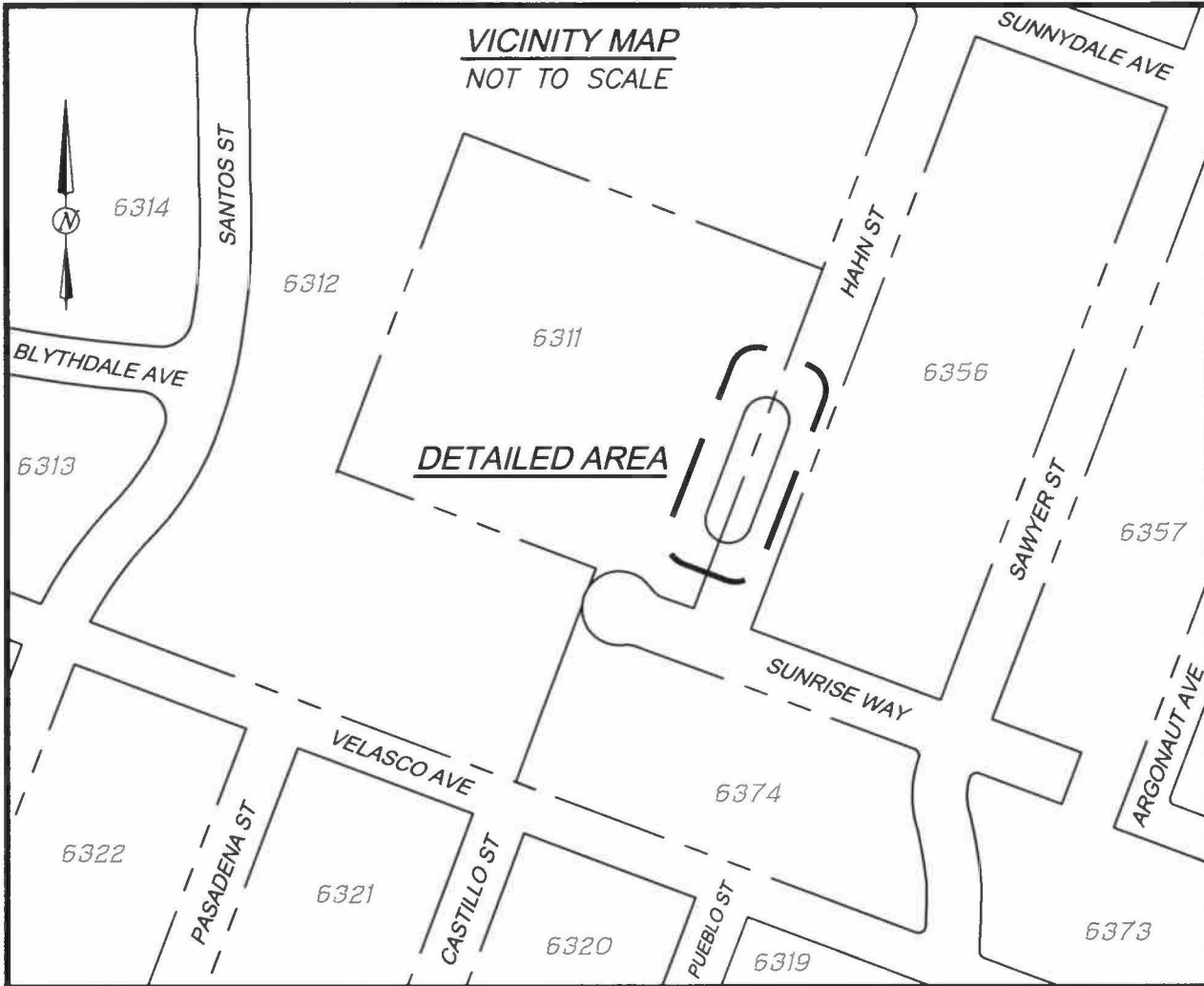
5/29/22
 DATE

CITY AND COUNTY OF SAN FRANCISCO
 SAN FRANCISCO PUBLIC WORKS

OFFICIAL SIDEWALK WIDTHS OF MALOSI STREET BETWEEN SUNRISE WAY AND HARMONIA STREET, FRONTING AB 6311 LOT 011 AND AB 6312 LOT 010

FILE: Q-20-1162	SHEET 2 OF 2	SCALE: 1" = 40'	REVISION
-----------------	--------------	-----------------	----------

Jawong May 26, 2022 - 10:47am J:\Survey\Sidewalk Changes\2020\2020_005 - Sunnydale HOPE SF\DWG\AB 6312 LOT 011_Hahn St.dwg



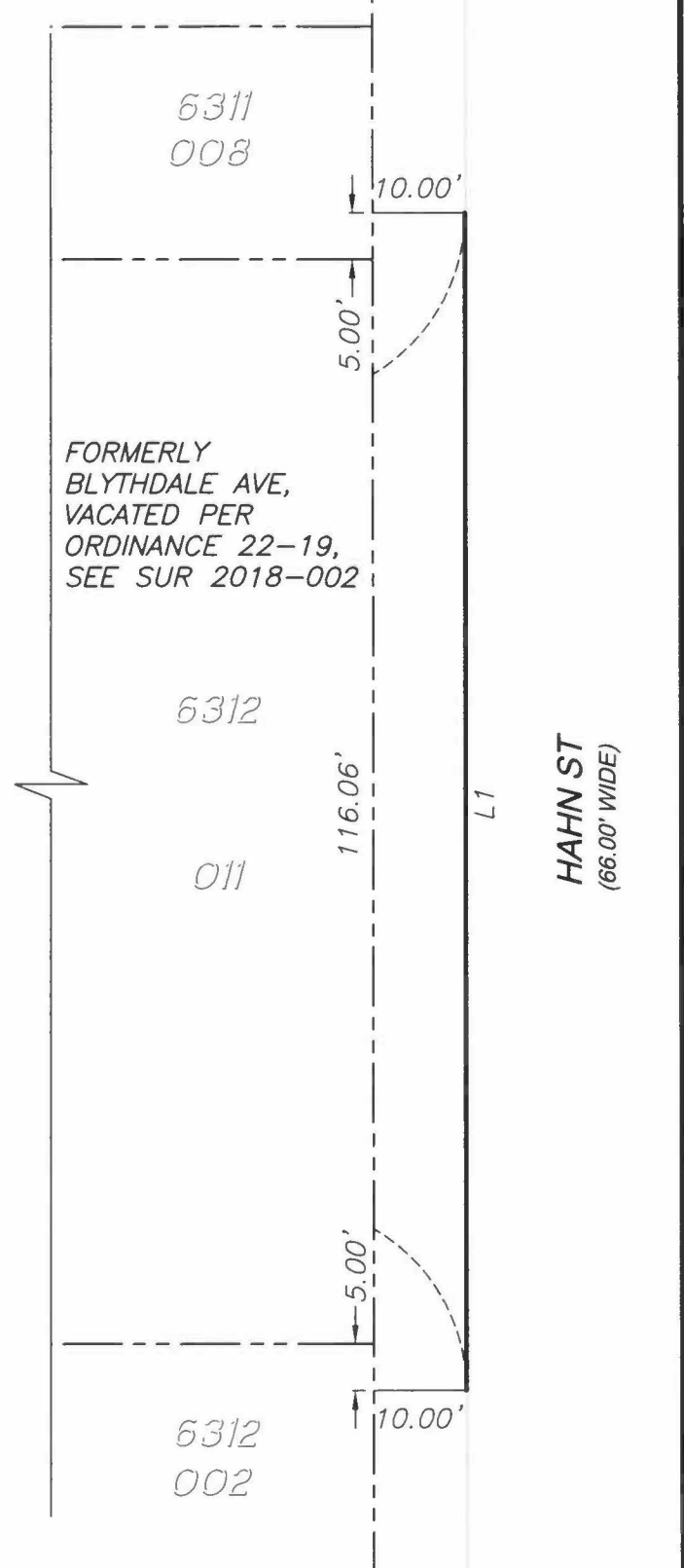
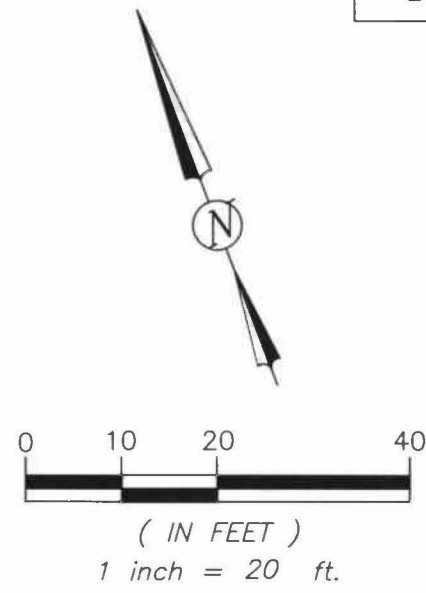
MAP REFERENCES:

STREET VACATION MAP TITLED "SUR 2018-002" DATED DECEMBER 19, 2019 ON FILE WITH OFFICE OF THE CITY AND COUNTY SURVEYOR.

Q-12-019 TITLED "SUNNYDALE HOUSING PROJECT CAL.-1-3" DATED NOVEMBER 22, 1939 ON FILE WITH OFFICE OF THE CITY AND COUNTY SURVEYOR.

OFFICIAL GRADE MAP NO. 248 ON FILE WITH OFFICE OF THE CITY AND COUNTY SURVEYOR.

LINE TABLE		
LINE #	LENGTH	BEARING
L1	126.06	S20°39'58"W



LEGEND

- ASSESSORS BLOCK AND LOT NUMBER
- NEW CURB LINE
- PROPERTY LINE
- EXISTING OFFICIAL CURB TO REMAIN
- EXISTING OFFICIAL CURB TO BE REMOVED



APPROVED:

William E. Blackwell Jr.

WILLIAM E. BLACKWELL JR. PLS 8251
ACTING CITY & COUNTY SURVEYOR

5/29/22
DATE

CITY AND COUNTY OF SAN FRANCISCO
SAN FRANCISCO PUBLIC WORKS

OFFICIAL SIDEWALK CHANGE ALONG THE WESTERLY PORTION OF HAHN STREET BETWEEN HARMONIA STREET AND SUNRISE WAY, FRONTING AB 6312 LOT 011

FILE: Q-20-1163	SHEET 1 OF 1	SCALE: 1" = 20'	REVISION
-----------------	--------------	-----------------	----------