



Figure 249.84-1: RPC Open Space
 Publicly-Owned: Port Commission or
 Recreation and Park Commission
 Jurisdiction

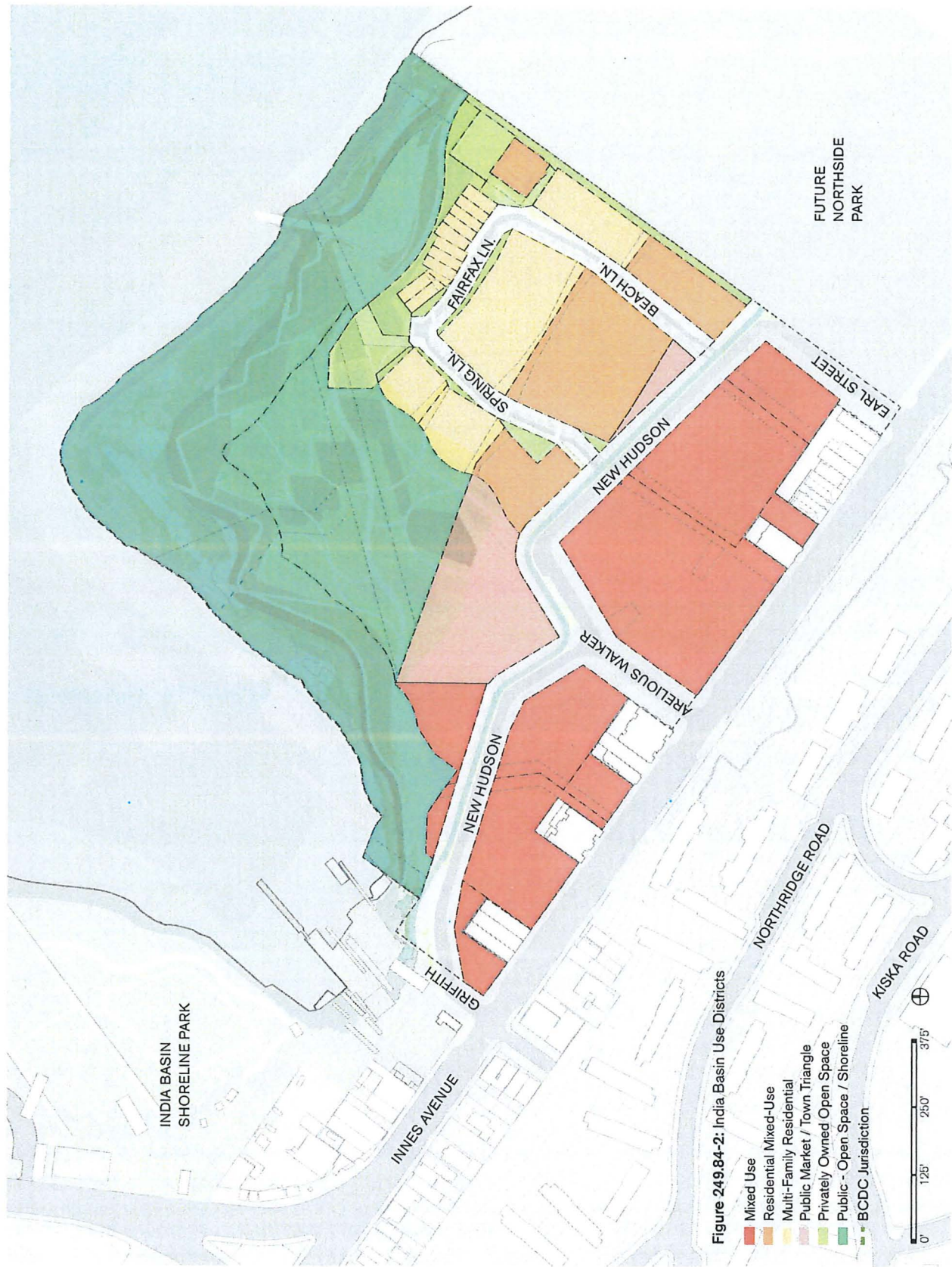
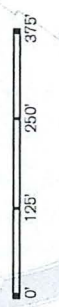


Figure 249.84-2: India Basin Use Districts

- Mixed Use
- Residential Mixed-Use
- Multi-Family Residential
- Public Market / Town Triangle
- Privately Owned Open Space
- Public - Open Space / Shoreline
- BCDC Jurisdiction



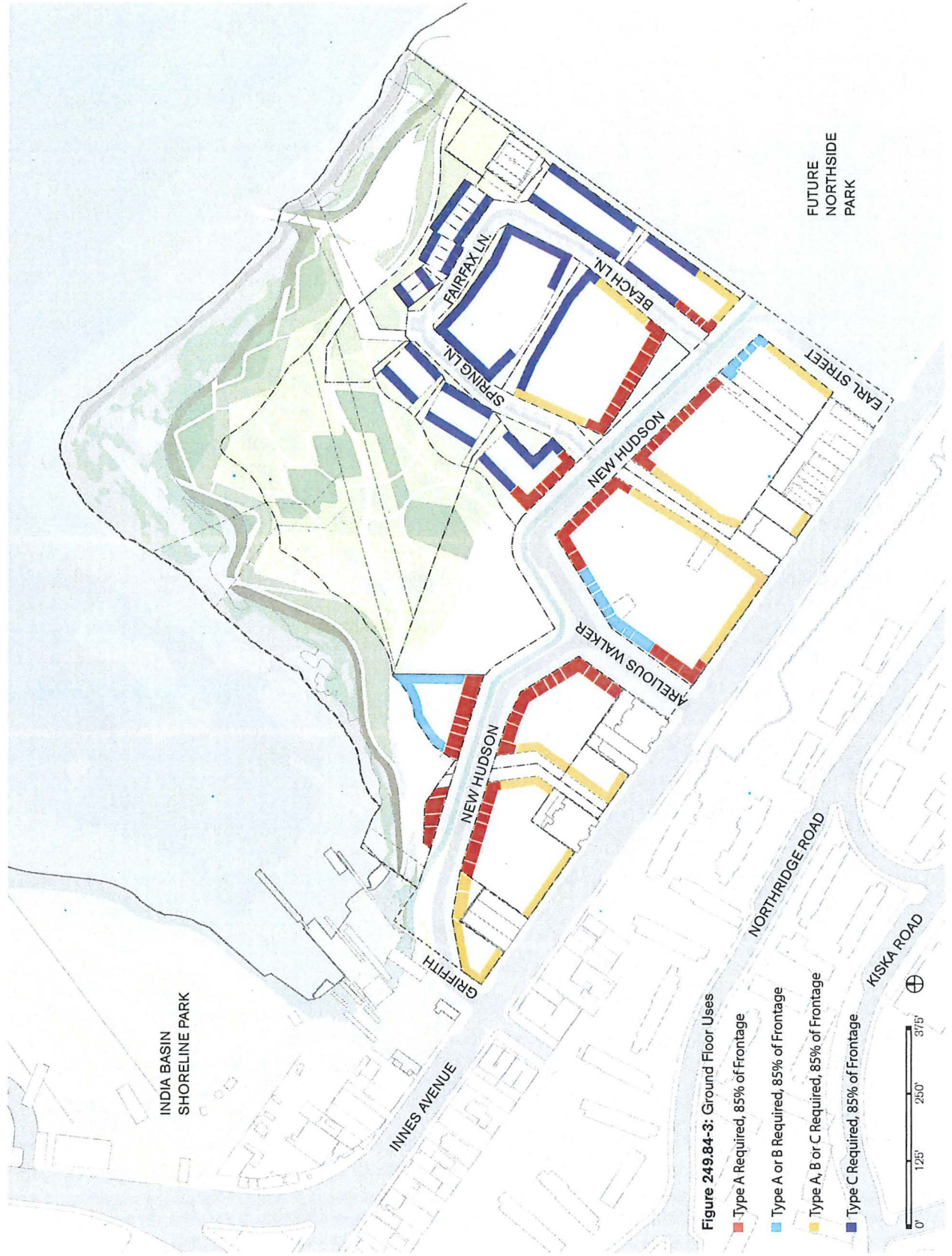
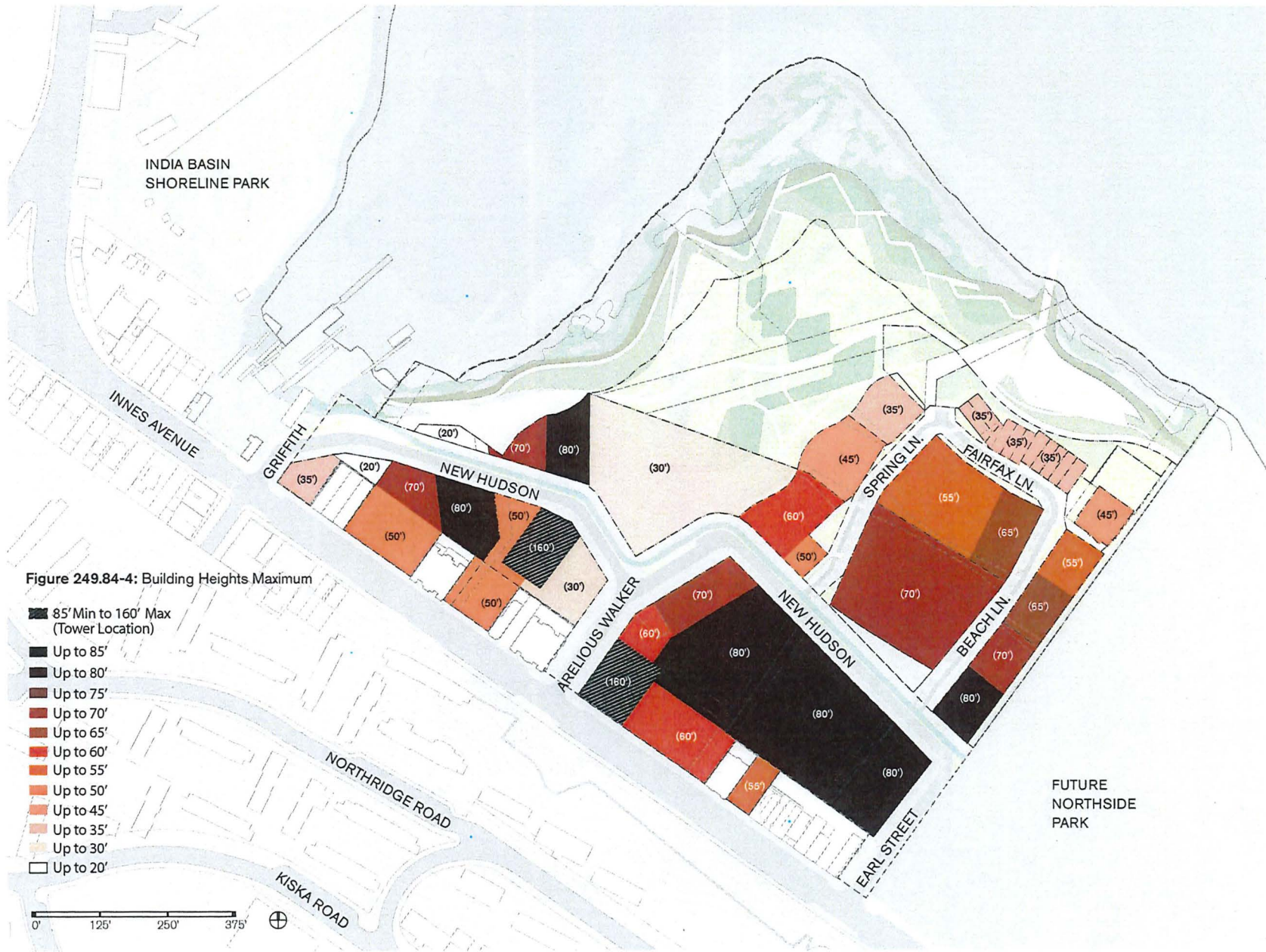


Figure 249.84-3: Ground Floor Uses

- Type A Required, 85% of Frontage
- Type A or B Required, 85% of Frontage
- Type A, B or C Required, 85% of Frontage
- Type C Required, 85% of Frontage





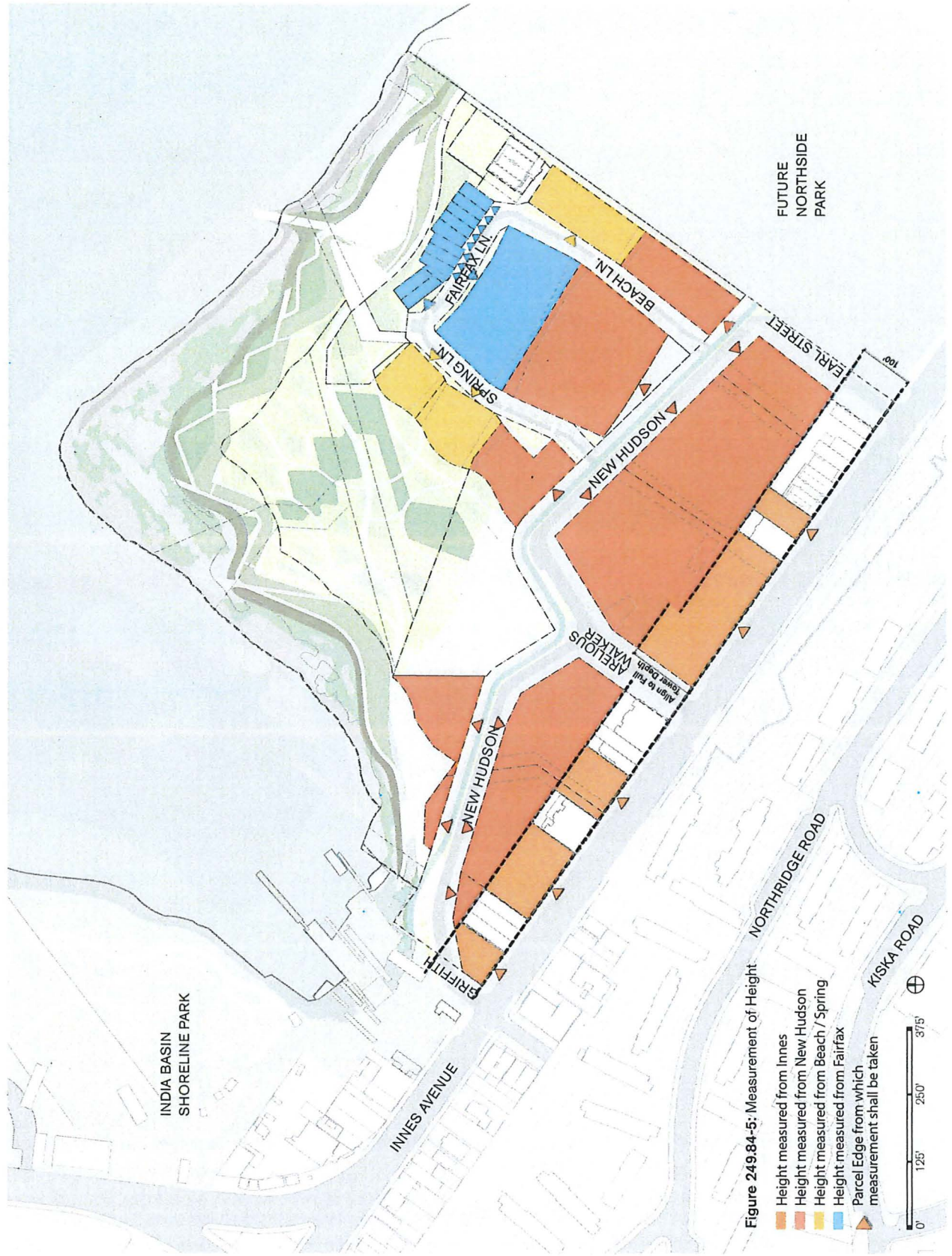


Figure 249.84-5: Measurement of Height

- Orange Height measured from Innes
- Yellow Height measured from New Hudson
- Blue Height measured from Beach / Spring
- Light Blue Height measured from Fairfax
- Red Triangle Parcel Edge from which measurement shall be taken



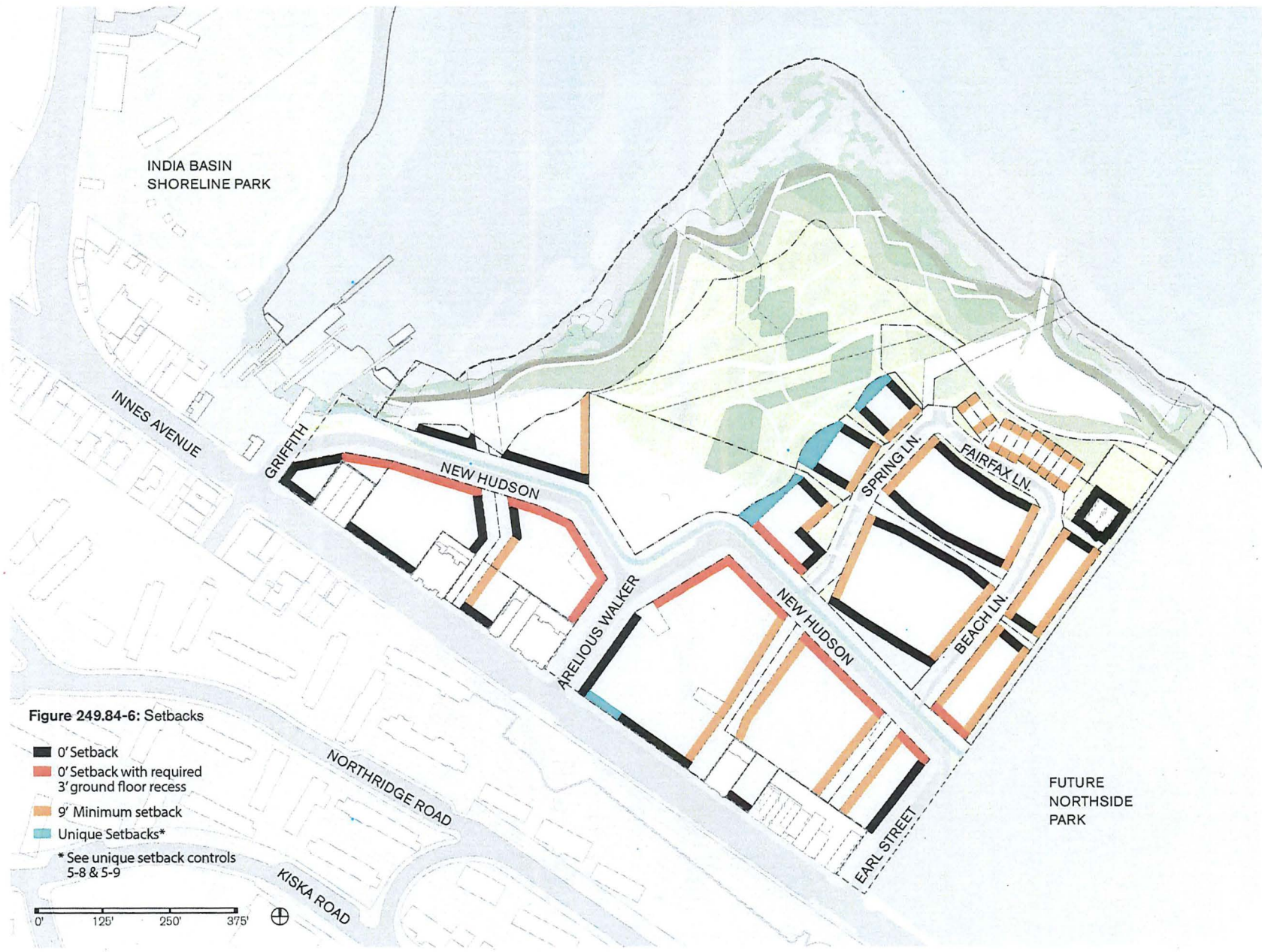


Figure 249.84-6: Setbacks

- 0' Setback
- 0' Setback with required 3' ground floor recess
- 9' Minimum setback
- Unique Setbacks*

* See unique setback controls 5-8 & 5-9

