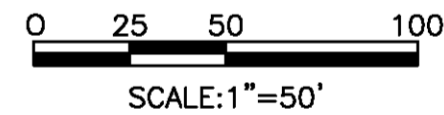
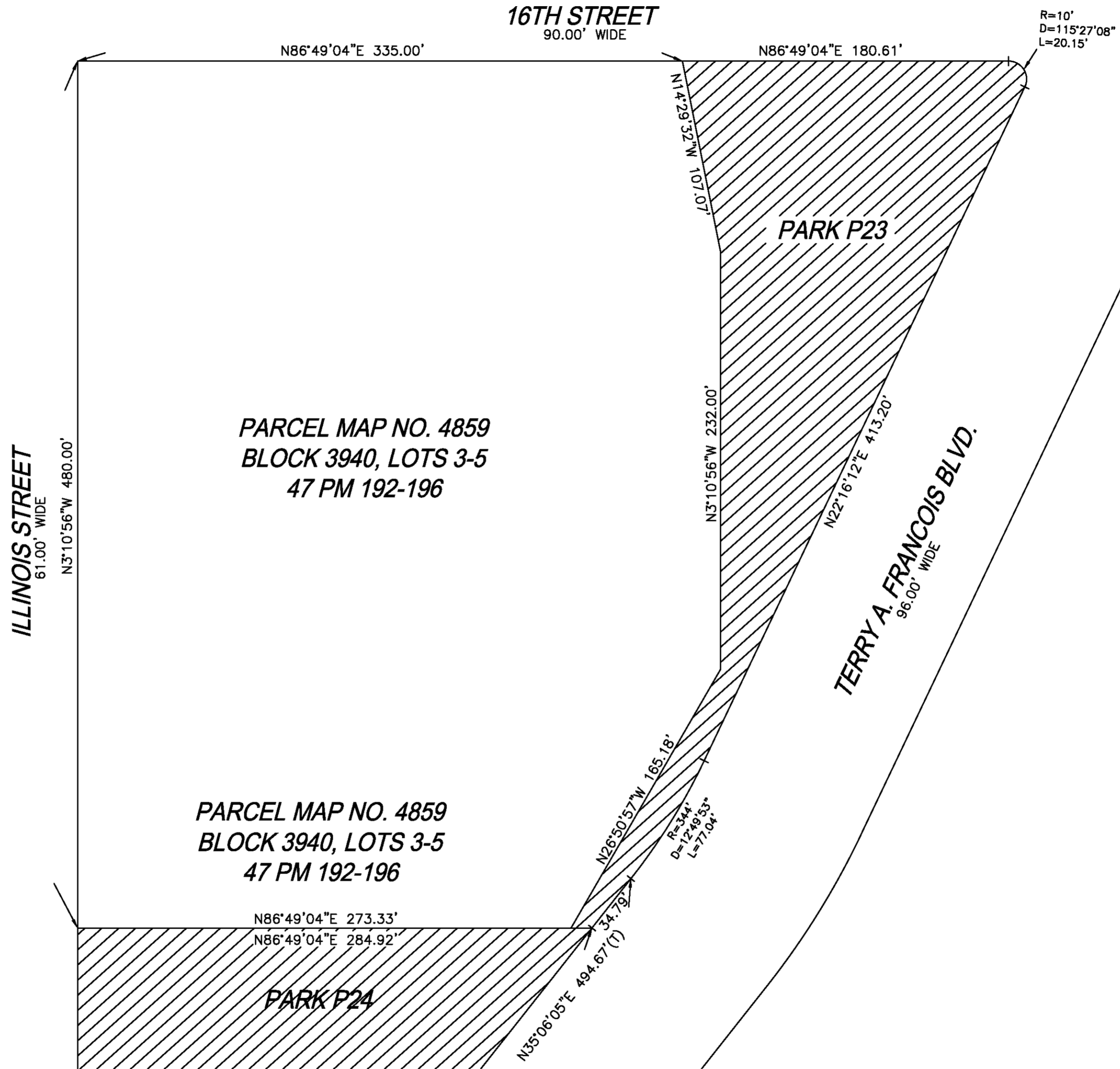




AB 8725



LEGEND
 PUBLIC RIGHT-OF-WAY DEDICATION FOR PUBLIC PARK AND OPEN SPACE

MAP SHOWING THE OPENING OF MISSION BAY PARKS P11 AND P11A

RECORDER'S STATEMENT

FILED THIS ____ DAY OF _____, 2019, AT ____ .M. IN BOOK _____ OF SURVEY MAPS, AT PAGE _____, AT THE REQUEST OF THE COUNTY SURVEYOR OF THE CITY AND COUNTY OF SAN FRANCISCO.

SIGNED _____ COUNTY RECORDER

APPROVED AS TO FORM:
 BY: _____ CITY AND COUNTY SURVEYOR
 APPROVED THIS ____ DAY OF _____, 2019
 BY ORDER NO. ____ DIRECTOR OF PUBLIC WORKS

THIS MAP, COMPRISING OF ONE (1) SHEET, IS APPROVED AND MADE OFFICIAL AND THE PARCELS SHOWN HEREON ARE DECLARED TO BE OPEN PUBLIC STREET, DEDICATED TO PUBLIC USE TO BE KNOWN BY NAME AS SHOWN ON THIS MAP BY ORDINANCE NO. ____ DAY OF _____, 2019.

CITY AND COUNTY OF SAN FRANCISCO DEPARTMENT OF PUBLIC WORKS BUREAU OF STREET USE AND MAPPING	
SCALE: 1"= 40'	DATE: JUNE 10, 2019
REFERENCES: BOOK Z OF SURVEY MAPS, PAGES 97-113	
SHEET 1 OF 2 SHEETS	A-17-185

PARCEL MAP NO. 4859
 BLOCK 3940, LOTS 3-5
 47 PM 192-196

N86°49'04"E 273.33'
 N86°49'04"E 284.92'

PARK 24

N35°06'05"E 459.88'
 N35°06'05"E 484.55'(T)

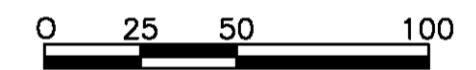
TERRY A. FRANCOIS BLVD.
 96.00' WIDE

ILLINOIS STREET
 61.00' WIDE

N3°10'56"W 360.98'

AB 8725

MARIPOSA STREET
 80.00' WIDE



SCALE: 1"=50'

LEGEND

PUBLIC RIGHT-OF-WAY DEDICATION FOR PUBLIC PARK AND OPEN SPACE

MAP SHOWING THE OPENING OF
 MISSION BAY PARKS P23 AND P24

CITY AND COUNTY OF SAN FRANCISCO
 DEPARTMENT OF PUBLIC WORKS
 BUREAU OF STREET USE AND MAPPING

SCALE: 1"= 40' | DATE: JUNE 10, 2019

REFERENCES:
 BOOK Z OF SURVEY MAPS, PAGES 97-113

SHEET 2 OF 2 SHEETS

A-17-185