



16th and Mission





Power Washing





Block Sweeping



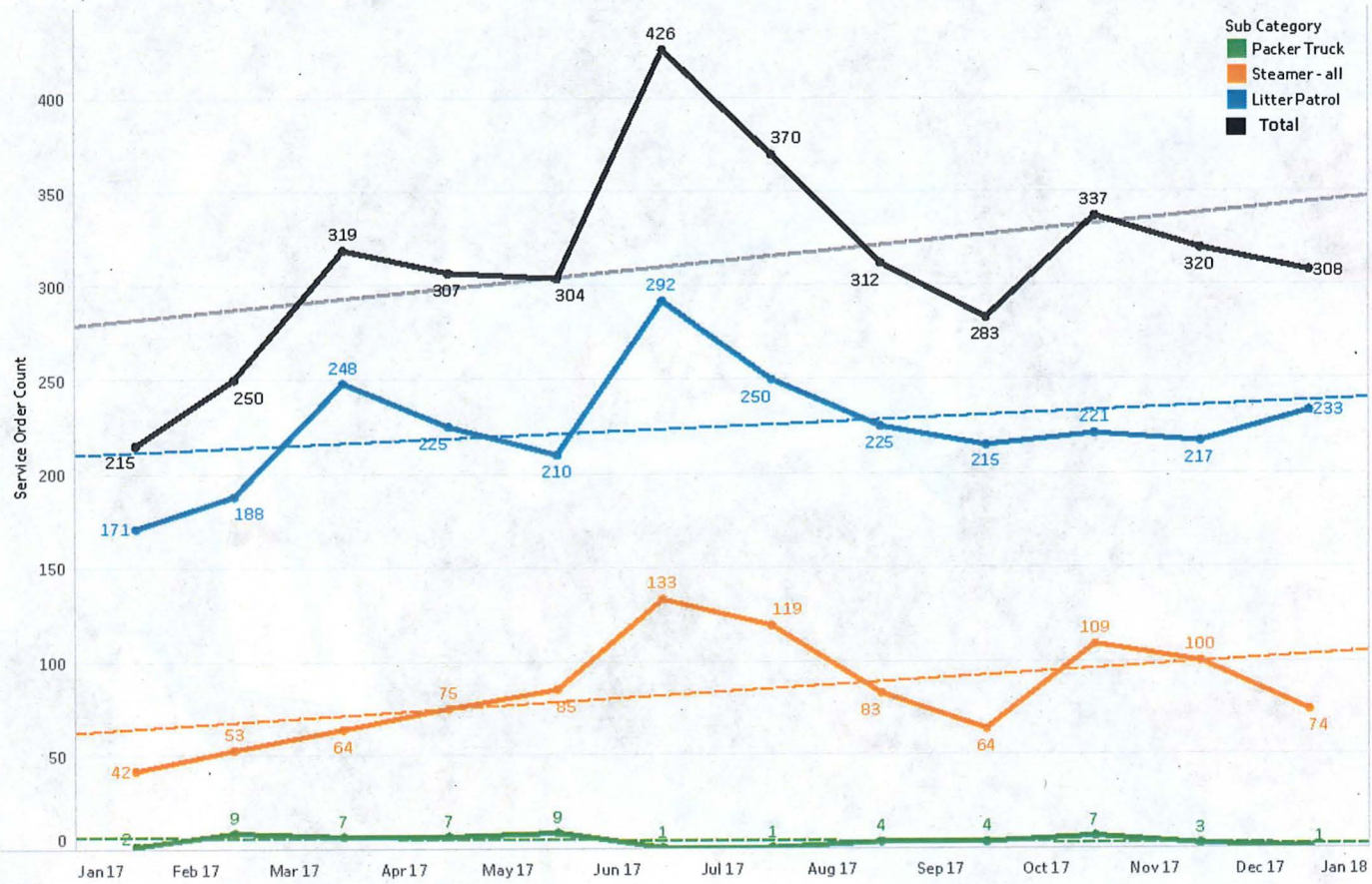
Volume of Street Cleaning Service Orders
within 1000 ft of Mission St & 16th St Intersection
February 2017 – January 2018



Disclaimer: Public Works does not guarantee the accuracy or completeness of any information provided. Reports are subject to change. If you have any questions and/or suggestions, please contact Alexandra Esdat (415-554-4893; Alexandra.Esdat@fdpw.org)



Monthly Volume and Trend of Street Cleaning Service Orders
within 1000 ft of Mission St & 16th St Intersection ONLY
February 2017 – January 2018



Disclaimer: Public Works does not guarantee the accuracy or completeness of any information provided. Reports are subject to change. If you have any questions and/or suggestions, please contact Alexandra Bidot (415-554-4883; Alexandra.Bidot@fdpw.org).



Graffiti Blight

Graffiti Removal



Volume of Graffiti Service Orders
 within 1000 ft of Mission St & 16th St Intersection
 February 2017 – January 2018

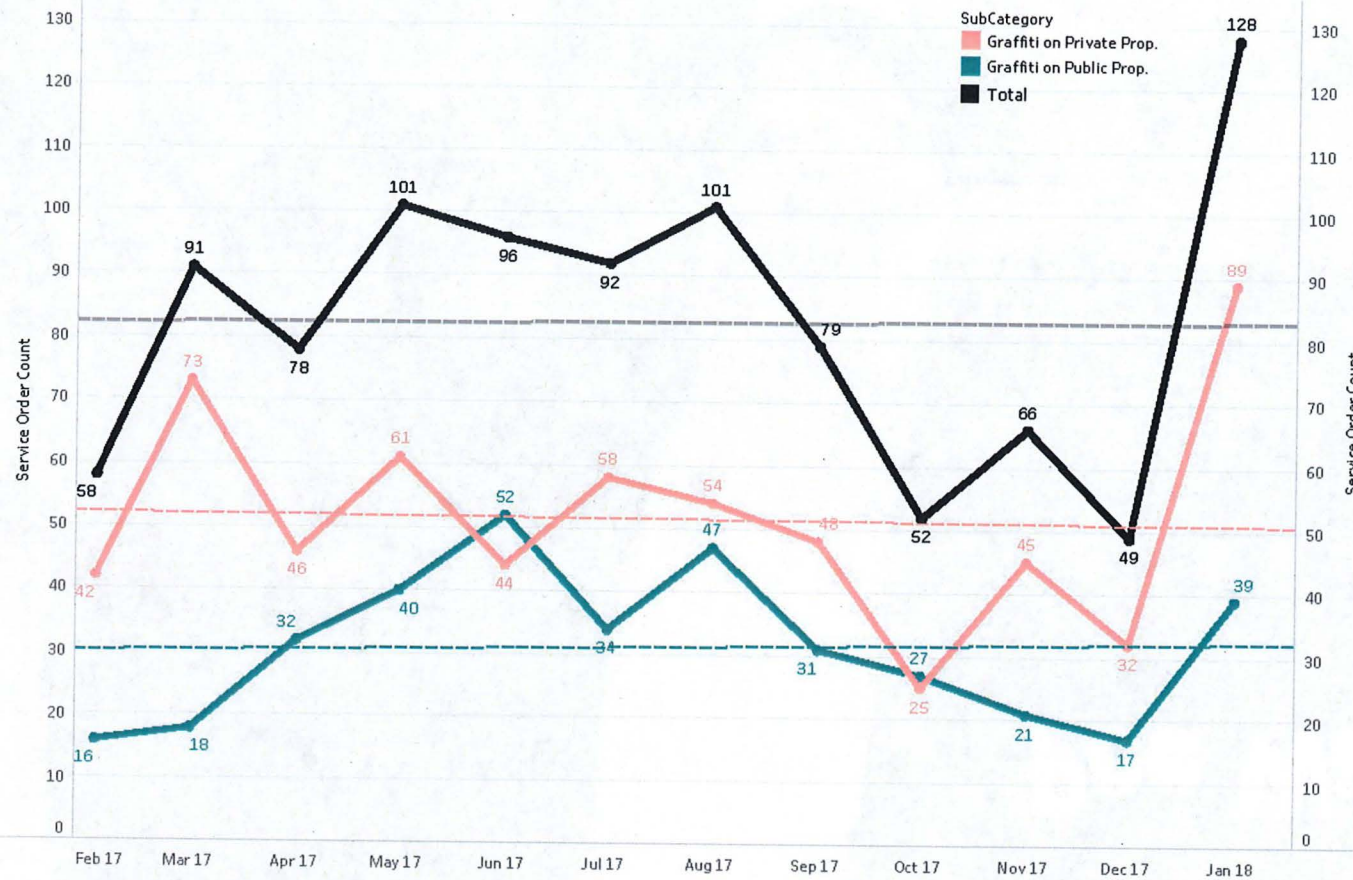


Disclaimer: Public Works does not guarantee the accuracy or completeness of any information provided. Reports are subject to change. If you have any questions and/or suggestions, please contact Alexandra Bidot (415-554-4983; Alexandra.Bidot@fdpw.org)

Monthly Volume and Trend of Graffiti Service Orders
within 1000 ft of Mission St & 16th St Intersection ONLY



February 2017 – January 2018



Disclaimer: Public Works does not guarantee the accuracy or completeness of any information provided. Reports are subject to change. If you have any questions and/or suggestions, please contact Alexandra Bidot (415-554-0883; Alexandra.Bidot@fdpw.org).

Pee Wall



Hold it!

This wall is not a public restroom.
Please respect San Francisco and seek
relief in an appropriate place.

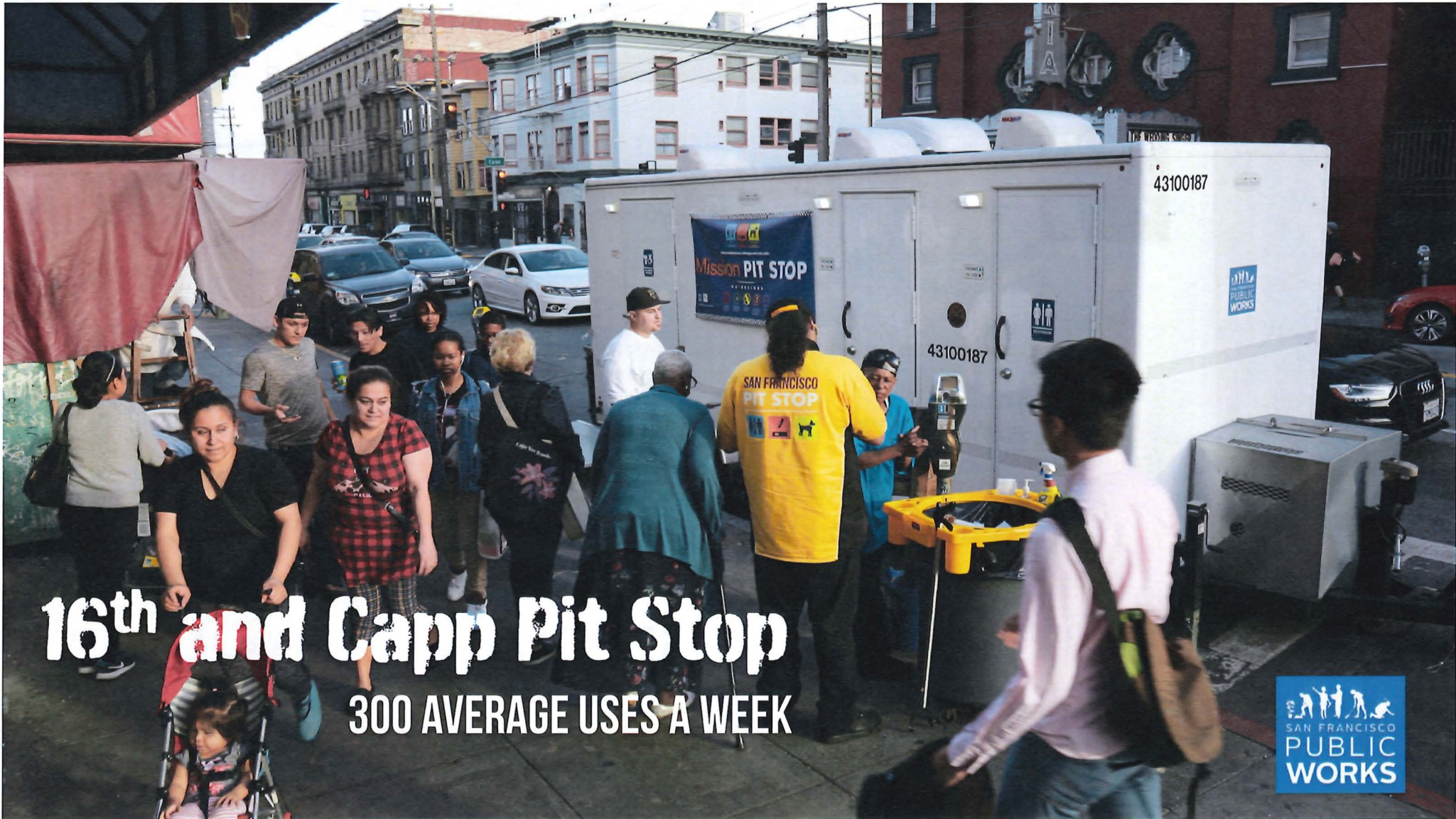
這幅牆並不是公共廁所。請尊重三藩市，尋找正確的地點解手。

Esta pared no es baño público
Por favor, respeten San Francisco y miccione en un lugar apropiado

San Francisco Police Code 153:

It is illegal to urinate on public or private property
without permission. Violations carry a penalty of up to
\$500.





16th and Capp Pit Stop

300 AVERAGE USES A WEEK



16th and Mission Pit Stop

800 AVERAGE USES A WEEK

16TH STREET

SAN FRANCISCO

TOILET

Mission PIT STOP



Where neighborhood challenges meet city goals.

Monday-Friday
9 am - 8 pm

www.sfdph.org/dph/eh/prevent/pitstop





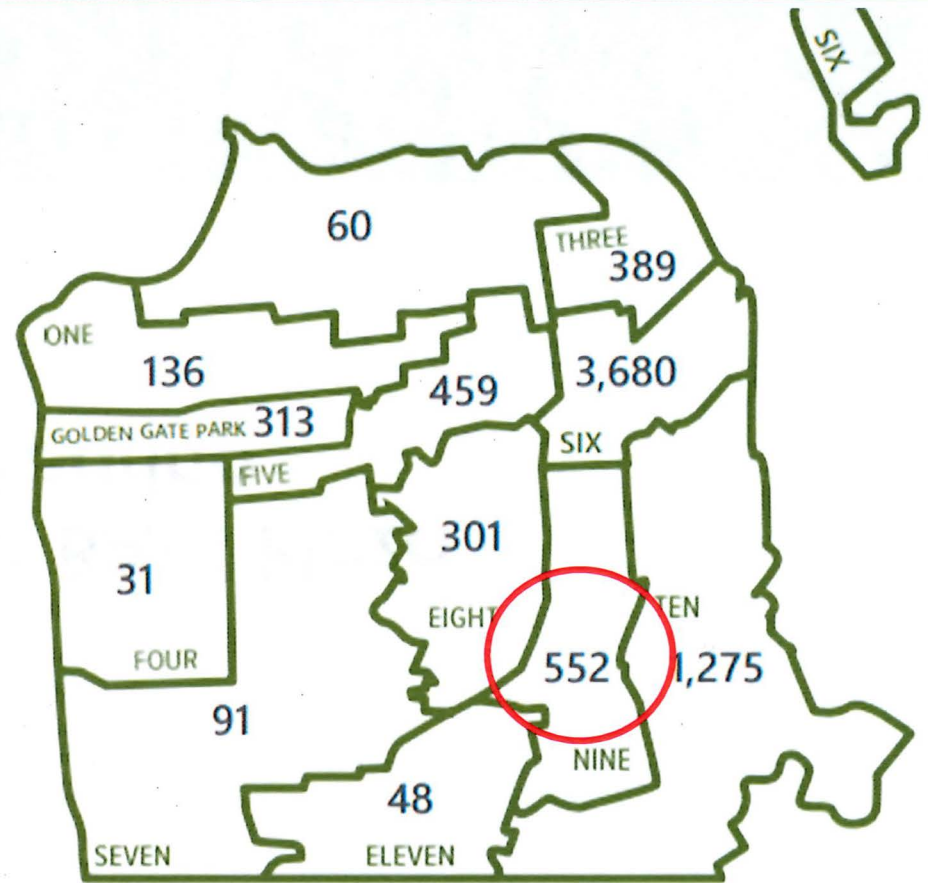
DEPARTMENT OF
HOMELESSNESS AND
SUPPORTIVE HOUSING

16th and Mission BART Plaza Services Hearing

Public Safety and Neighborhood Services
February 14, 2018

Sheltered and Unsheltered Homelessness in SF by District

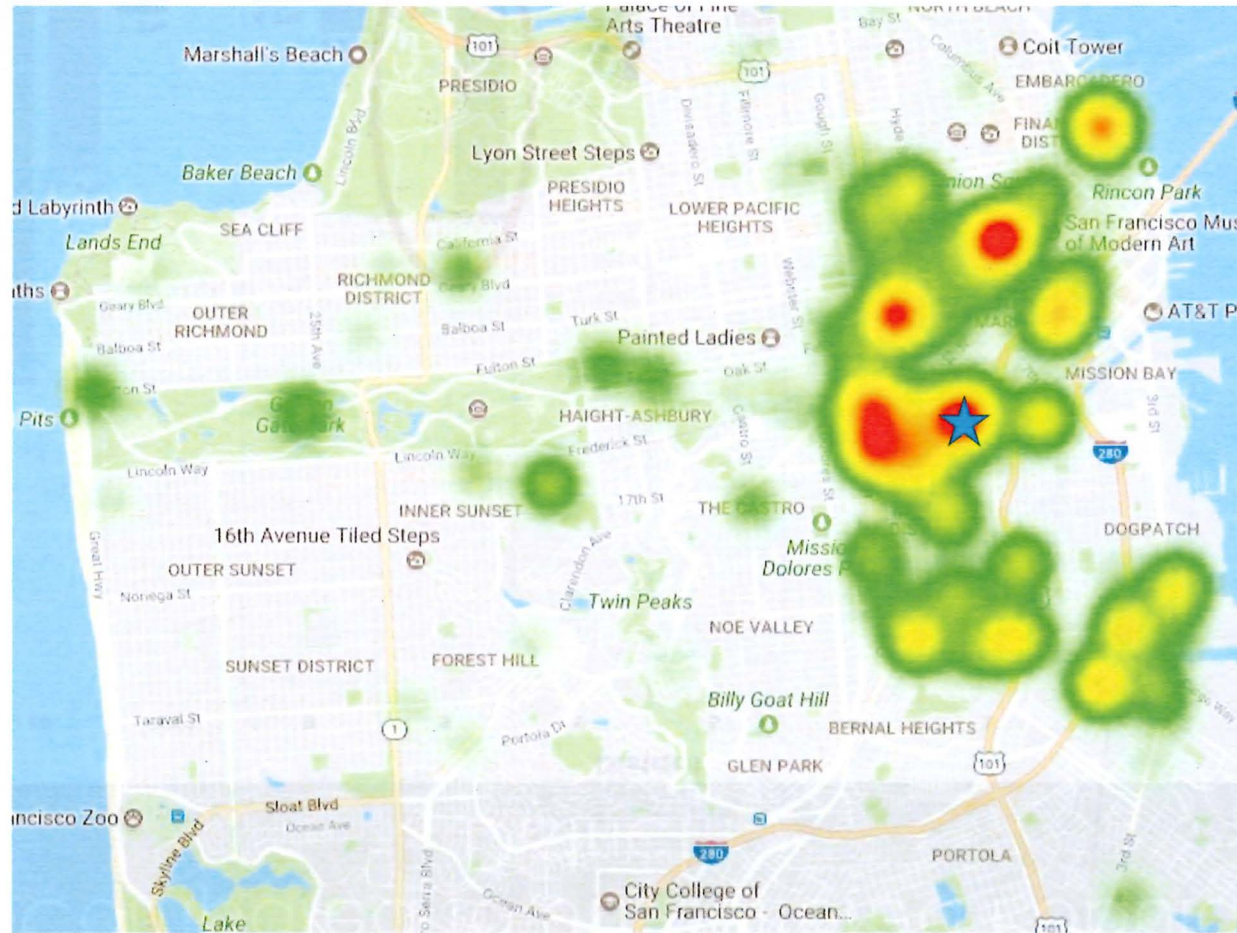
District	Sheltered	Unsheltered	Total
1	79	57	136
2	7	53	60
3	96	293	389
4	0	31	31
5	316	143	459
6	1,957	1,723	3,680
7	17	74	91
8	65	236	301
9	271	281	552
10	174	1,101	1,275
11	0	48	48
Confidential/Scattered Site	164	0	164
GG Park	0	313	313
Total	3,146	4,353	7,499
% of Total	42%	58%	100%



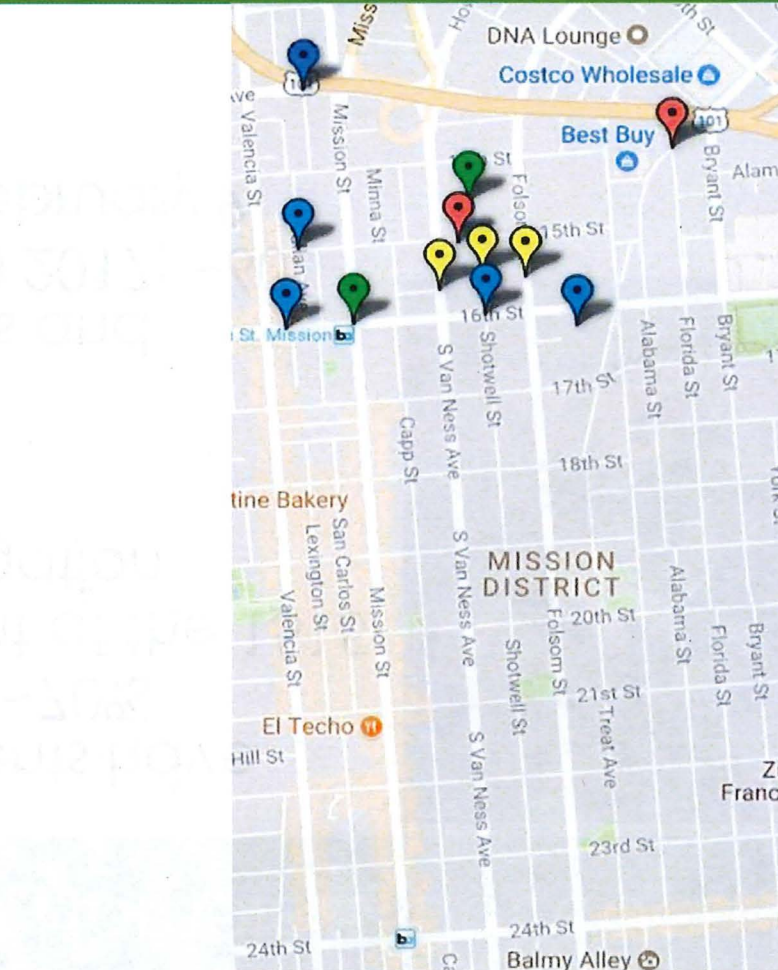
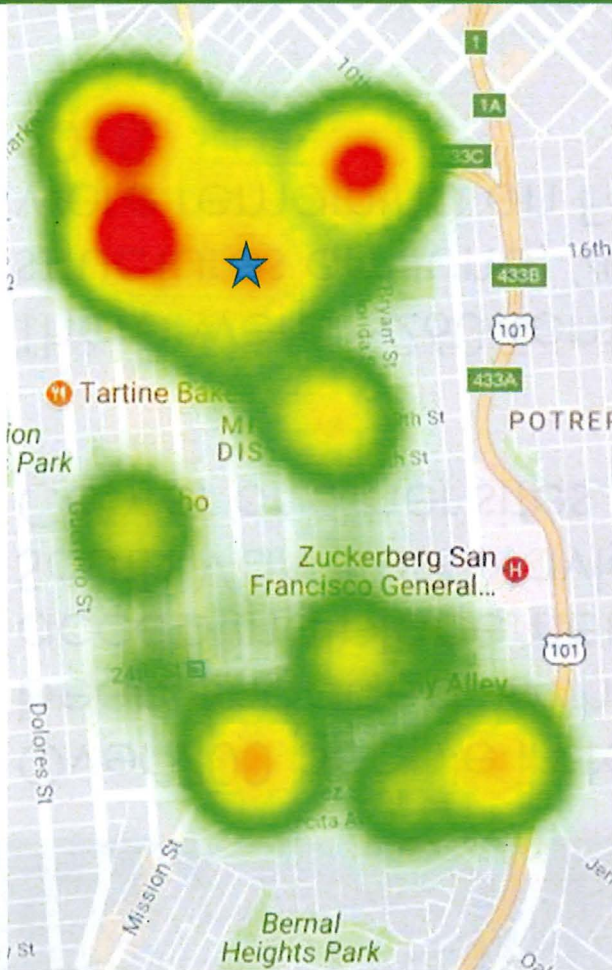
311 Call Compared to Unsheltered Population by District :



Homeless Outreach Throughout SF



D9 Homeless Outreach Team Activity



Marker	Size	#	Est. # of Residents
	Individual or Couple (1-2)	2	4
	Small Group (3-5)	3	15
	Large Group (6-9)	2	14
	Encampment (10-19)	4	45
	Large Encampment (20+)	1	35
TOTAL		12	113

Mission District Homeless Outreach Project

- Over 700 people in tents have been engaged, with ~70% accepting placement at the 1515 South Van Ness Navigation Center or other sites.
- There were ~260 Tents and structures on June, 20 2017; ~60 were remaining on February 9, 2018.



HSH + MUNI+ BART Partnership

- Began mid-November 2017
- 2 Full time HOT staff & access to the Homelessness Response System including Navigation Centers and Street Medicine.
- Focus on joint MUNI/BART stations from Embarcadero to Civic Center with a concentration of the work at Powell and Civic Center
- Outreach Areas:
 - The tunnels between stations
 - The stations
 - The platforms



HSH + MUNI+ BART Partnership

- HOT Outreach at MUNI/BART stations since November 2017:
 - Number of Contacts: 258
 - Number of Referrals: 128
 - Number of Connections: 266



Recommendations

- Remember that this is not primarily a homeless issue, there are challenges related to design, poverty, cleanliness, public safety and health that must be addressed.
- Continue coordinating efforts to address this area through the Healthy Streets Operations Center.
- Consider expanding BART/MUNI pilot with a second SF HOT team.



LEAD SF Fact Sheet

1. What is LEAD SF?

San Francisco has been chosen as a recipient of a Board of State and Community Corrections (BSCC) grant to implement Law Enforcement Assisted Diversion (LEAD). This grant is funded for 5.9 million dollars for 26 months (April 21, 2017-June 30, 2019).

Based on the Seattle LEAD program, LEAD SF will be an innovative pre-booking diversion program that will refer repeat, low-level drug offenders at high risk of recidivism, at the earliest contact with law enforcement to community-based health and social services as an alternative to jail and prosecution. This program, to be implemented in August of 2017, will focus on the Mission and Tenderloin Districts to better meet the needs of individuals with a history of substance abuse and low-level drug offenses through **3 goals**: 1) **reduce the recidivism rate** for low-level drug and alcohol offenders, 2) **strengthen collaboration** across city and community based partners, and 3) **improve their health and housing status**.

2. Who are the partners?

City Departments

- Adult Probation Department
- Bay Area Rapid Transit (BART) Police
- Department of Public Health
- Office of the District Attorney
- Office of the Public Defender
- San Francisco Police Department
- San Francisco Sheriff's Department

Community Based Organizations

- Drug Police Alliance
- Felton Institute
- Glide Harm Reduction
- San Francisco Public Health Foundation

Technical Support

- Harder+Company Community Research
- Hatchuel Tabernik and Associates

Community Representatives

- Reentry Council
- Roadmap to Peace
- Sentencing Commission
- Tenderloin Health Improvement Partnership
- Workgroup to Re-Envision the Jail Replacement Project

3. What services are provided?

An individual receiving services through LEAD SF will have an Individualized Intervention Plan that they will develop with their treatment team. Services will vary to meet the unique needs of each individual, but may include:

- Support with food, shelter, and clothing
- Enrollment in public benefits
- Linkage to medical services (e.g., mental health, substance use disorder treatment, etc.)
- Support with education and employment services
- Family and community re-engagement

All services will be based in the following principles and practices:

- Harm Reduction
- Recovery and Wellness
- Trauma Informed
- Culturally Competent
- Gender Specific
- Evidence Based Practices (e.g., Seeking Safety, Dialectical Behavioral Therapy, Cognitive Behavioral Therapy, Assertive Community Treatment, Wellness Recovery Action Plan, Thinking for a Change)

4. Who is eligible?

An individual must meet all of the following criteria to qualify for LEAD SF:

- 1) Be at least 18 years of age;
- 2) Be alleged of committing an offense in the Tenderloin or Mission Districts;
- 3) Have contact with Law Enforcement where there is probable cause for a LEAD eligible offense (engaging in specified drug-related misdemeanor/felony offenses including for those engaged in survival trades)

5. Who can refer?

A referral must be made from one of the following law enforcement agencies working in the Mission or Tenderloin Districts:

- San Francisco Police Department (SFPD)
- Bay Area Rapid Transit Police (BART Police)
- San Francisco's Sheriff's Department (SFSD)

LEAD SF Website

www.sfdph.org/dph/comupg/knowlcol/leadSF/Law-Enforcement-Assisted-Diversion-SF.asp

LEAD SF Email

leadsf@sfdph.org

What is LEAD SF?

Grant from:



Goals are to:



reduce recidivism



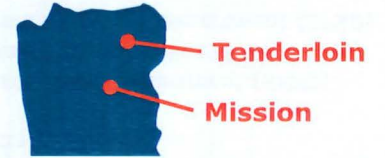
strengthen collaboration



improve health and housing status



Particularly in:



.....Who are the partners?.....



City Departments



Community Based Organizations



Technical Support



Community Representatives

.....What services are provided?



Support with food, shelter, & clothing



Enrollment in public benefits



Linkage to medical services (e.g., mental health, substance use disorder treatment, etc.)



Support with education & employment services



Family & community re-engagement

.... Who is eligible for diversion and how are they diverted?

- ✓ Must be at least **18** or older
- ✓ be alleged of committing offense in Tenderloin or Mission Districts



Identified as LEAD eligible by Law Enforcement (engaging in specified drug-related misdemeanor/felony offenses, including for those engaged in survival trades) and diverted

← to services

..... Who can refer?



SF Police



SF Sheriff



BART Police



LEAD SF

LEAD SF Website

www.sfdph.org/dph/comupg/knowlcol/leadSF/Law-Enforcement-Assisted-Diversion-SF.asp

LEAD SF Email

leadsf@sfdph.org

HUMMINGBIRD PLACE PSYCHIATRIC RESPITE Behavioral Health Navigation Center

San Francisco Department of Public Health
SFHN TRANSITIONS DIVISION

Presented by: Luis Calderon, Director of SFHN Transitions Care Coordination
February 14, 2018



San Francisco
Health Network

SAN FRANCISCO DEPARTMENT OF PUBLIC HEALTH

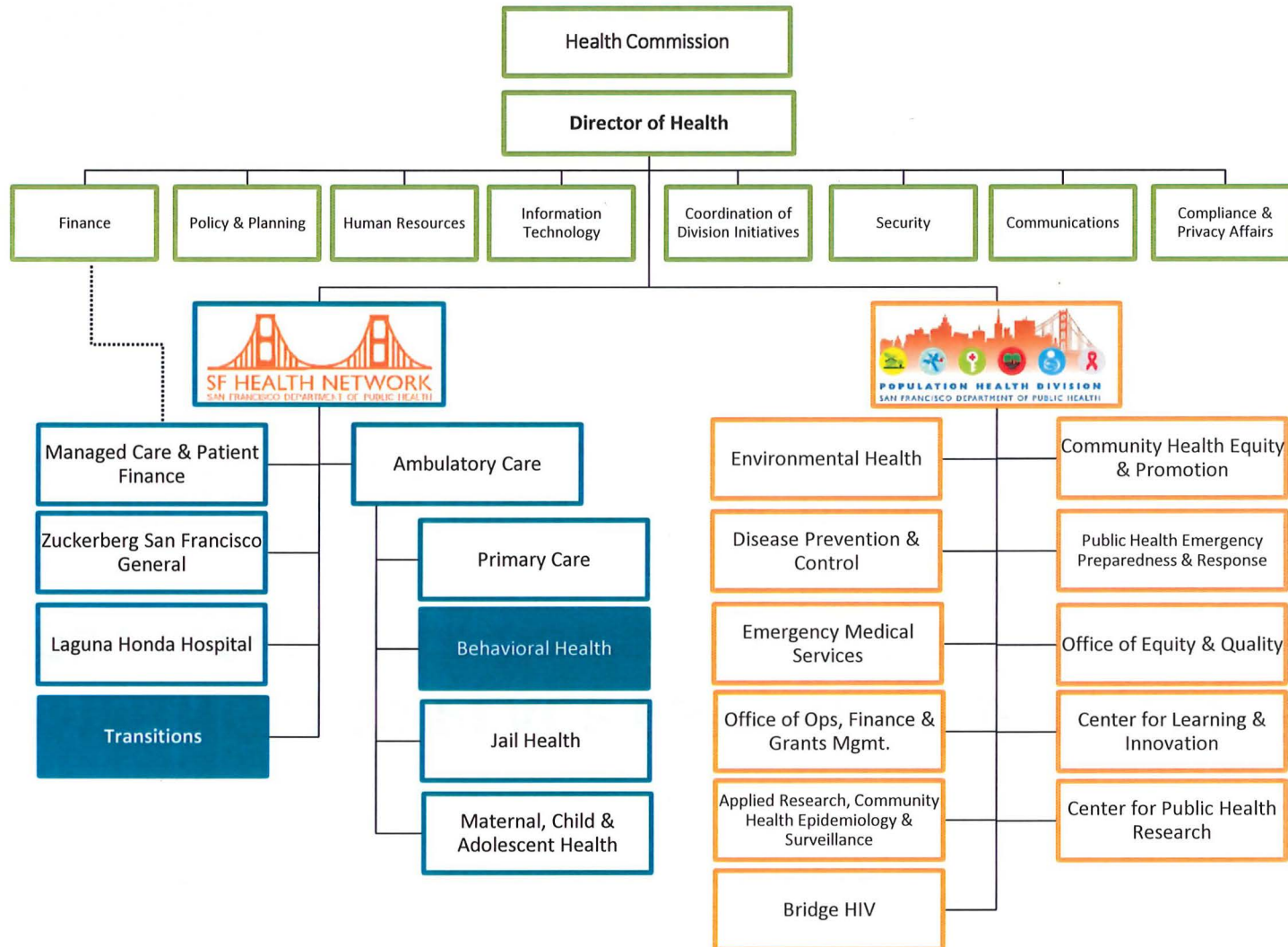


Department of Public Health Organizational Chart



San Francisco
Health Network

SAN FRANCISCO DEPARTMENT OF PUBLIC HEALTH





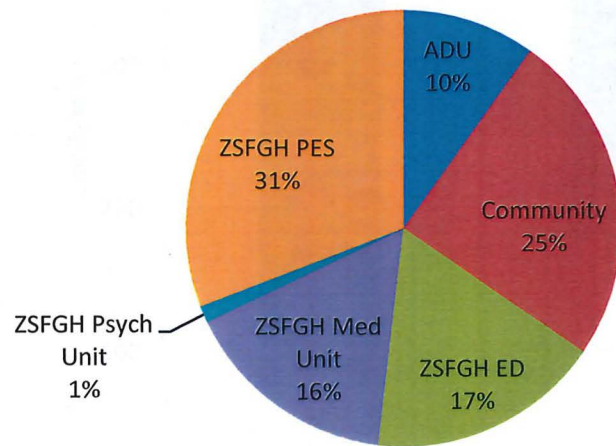
Hummingbird Place *In and Out*



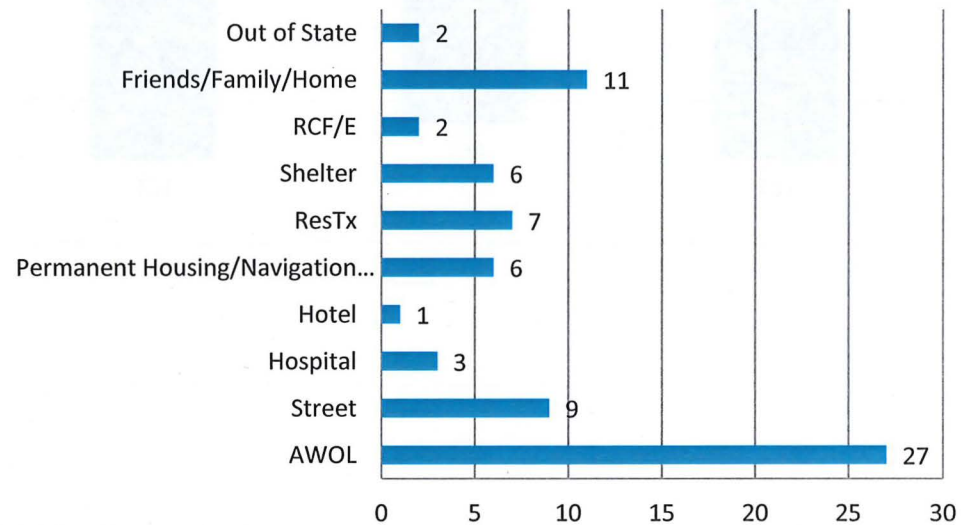
San Francisco
Health Network

SAN FRANCISCO DEPARTMENT OF PUBLIC HEALTH

Referral Source



Disposition



Period: 8/30/17-2/10/18

Shortest stay	1 day
Longest stay	128 days
Average Length of Stay for Overnight clients	20.67 days
Total # of clients (duplicated)	81



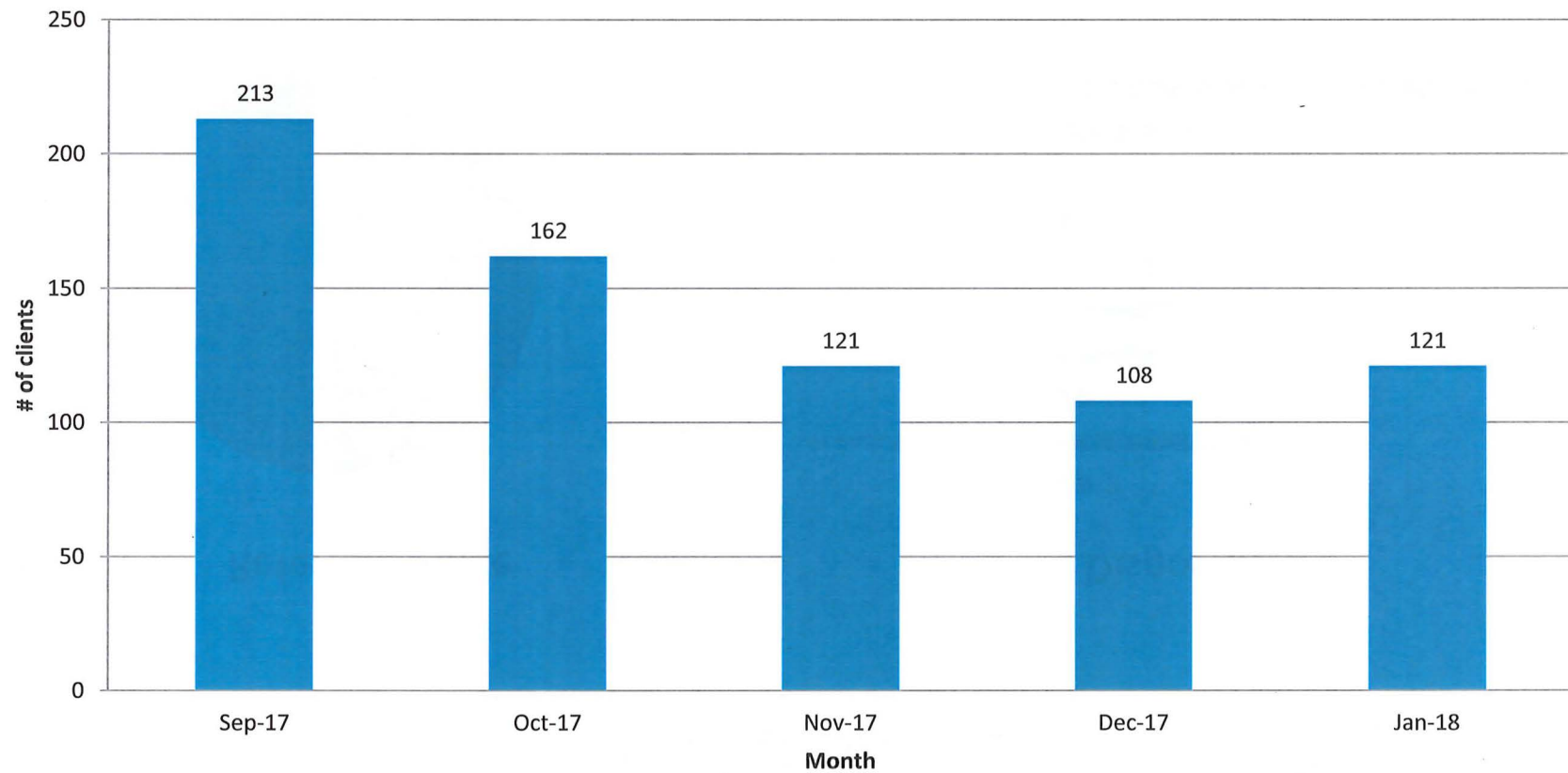
Hummingbird Place *Day Drop In*



San Francisco
Health Network

SAN FRANCISCO DEPARTMENT OF PUBLIC HEALTH

Day Drop In





Hummingbird Place *Wraparound Services*



San Francisco
Health Network

SAN FRANCISCO DEPARTMENT OF PUBLIC HEALTH

- Motivational Interviewing to encourage engagement in treatment and services
- Socialization
- Supportive counseling and validation
- Link to medical and mental health care
 - provide onsite if not ready to go to clinic
- Assist with obtaining photo identification, Medi-Cal, Social Security benefits, CAAP,
- Reunite with families and escort when out of area



Hummingbird Place *Neighborhood Impact*



San Francisco
Health Network

SAN FRANCISCO DEPARTMENT OF PUBLIC HEALTH

- Opportunity to bring clients engaged in the neighborhood directly to drop in when appropriate
- Clients brought into the Emergency Room or Psychiatric Emergency Services can be cleared and transferred to Hummingbird quickly



Hummingbird Place *Treatment Partners*



San Francisco
Health Network

SAN FRANCISCO DEPARTMENT OF PUBLIC HEALTH

- PRC/Baker Places: mental health, dual diagnosis crisis, residential, transitional treatment, medical detox
- Progress Foundation: mental health crisis, residential, transitional treatment
- HealthRight 360: substance use disorder and dual diagnosis residential treatment, social detox
- Additional Community Treatment Providers: Friendship House, Harbor Light, Mission Council to name a few

- SFHN Transitions Placement Team conducts Utilization Management and Utilization Review to monitor appropriate use of program beds to ensure flow.



Hummingbird Place *Behavioral Health Access*



San Francisco
Health Network

SAN FRANCISCO DEPARTMENT OF PUBLIC HEALTH

- Street Medicine and Shelter Health hold clinics at Navigation Centers
- Hummingbird has on-call access to the SFHN Transitions Care Coordination Behavioral Health Clinicians
- Treatment Access Team is available to make site visits if clients are not able to come to the Behavioral Health Access Center

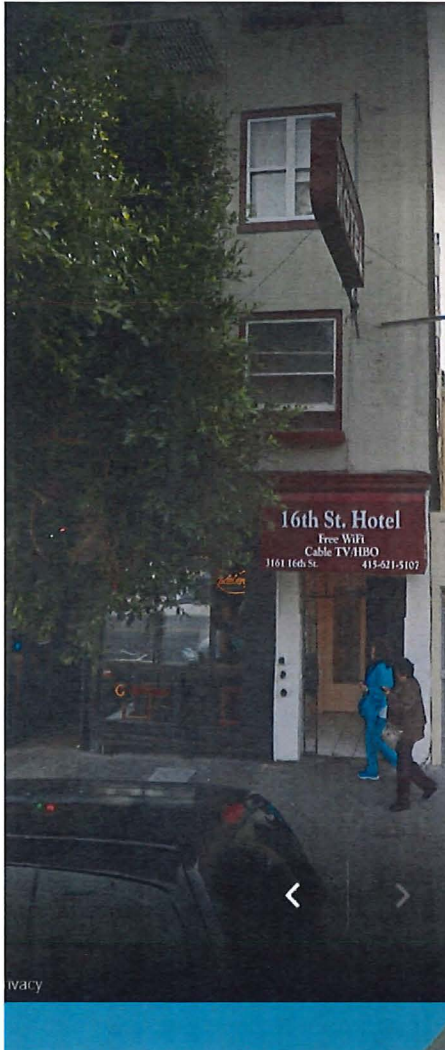


Hummingbird Place *Alice*



San Francisco
Health Network

SAN FRANCISCO DEPARTMENT OF PUBLIC HEALTH



- Initial engagement by Comprehensive Crisis Team near 16th Street and Mission
- 5150 to ZSFGH
- Discharge to Hummingbird Place
- Warm hand off to SFHN Transitions Care Coordination Team
- Assigned to a Tagalog speaking Public Health Nurse
- Discovered she enjoyed eating Filipino food
- Transitions Care Coordination brings Filipino food to Hummingbird
- Determine Alice is not interested in following up with ongoing medical work up. Options explained and she decides to move to the Sixteenth Street Hotel
- Provided television, soft mattress topper and set up the room
- Provide ongoing medical and social support care on a home visiting basis



Law Enforcement Assisted Diversion (LEAD)



LEAD SF Partners

City Departments

- Adult Probation Department
- Bay Area Rapid Transit (BART) Police
- Department of Public Health
- Office of the District Attorney
- Office of the Public Defender
- San Francisco Police Department
- San Francisco Sheriff's Department

Community Based Organizations

- Drug Police Alliance
- Felton Institute
- Glide Harm Reduction
- San Francisco Public Health Foundation

Technical Support

- Harder+Company Community Research
- Hatchuel Tabernik and Associates

Community Representatives

- Reentry Council
- Roadmap to Peace
- Sentencing Commission
- Tenderloin Health Improvement Partnership
- Workgroup to Re-Envision the Jail Replacement Project

LEAD SF Grant

Grant through Board of State and Community Corrections

- 26 month pilot to connect low level drug offenders with high needs to services
- Focused on Tenderloin and Mission Districts
- Minimum of 250 individuals served
 - 200 pre booking referrals
 - 50 social contact referrals

Goals of Grant

- 1. Reduce the recidivism rate** for low-level drug and alcohol offenders in the Tenderloin and Mission districts
Metric: 50% free of new criminal charges
- 2. Strengthen collaboration** across city departments and with community-based organizations to better meet the needs of individuals with a history of substance abuse
Metric(s): Protocols, sustainability, community meetings
- 3. Improve health and housing status** of LEAD participants
Metric: Enrollment in benefits, GA, SUD treatment, MH treatment, housing, employment, income

Types of Referrals Under Senate Bill 843

- Pre-booking Referral (200 referrals)
 - Probable cause for arrest of an eligible charge
 - Voluntary alternative to arrest
- Social Contact Referral (50 referrals)
 - Individual is at high risk of arrest for the eligible charges
 - There is a history of involvement with and/or being arrested for the eligible charges
 - Individual wants to voluntarily participate

Eligible Charges Under Senate Bill 843

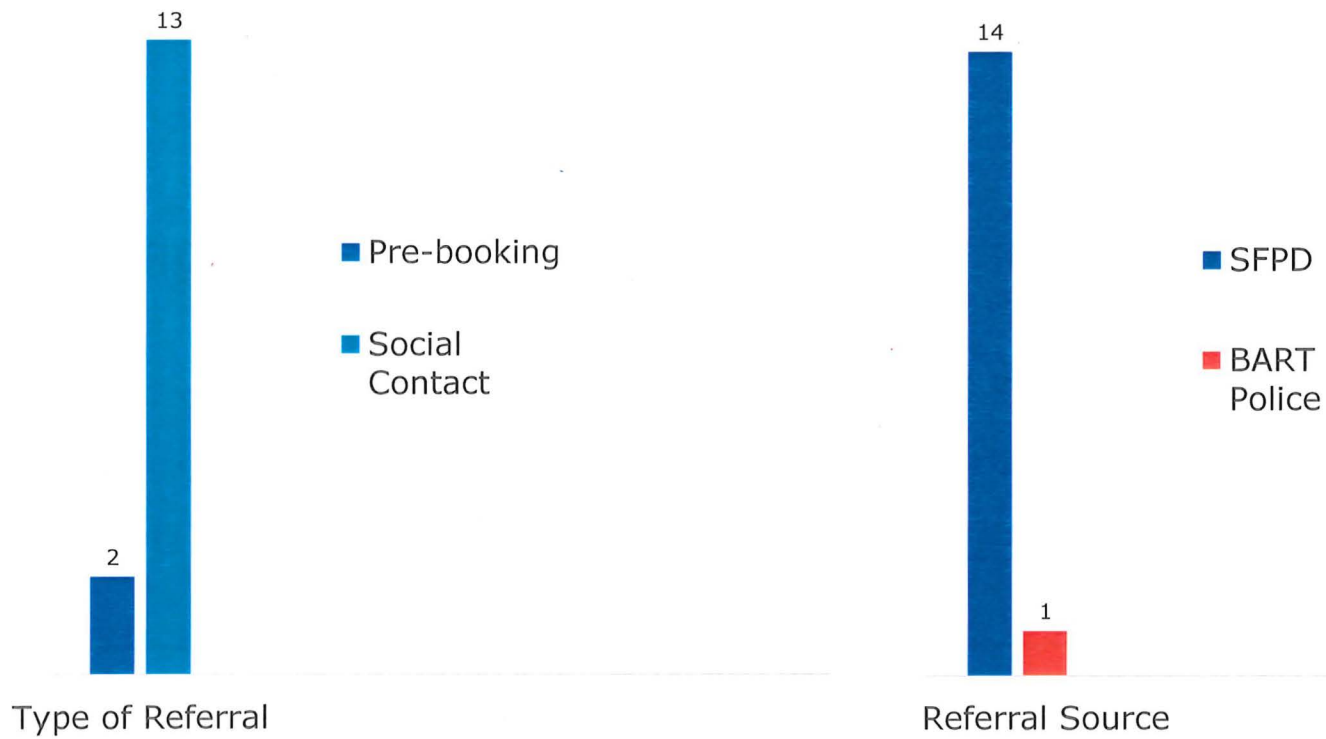
- Eligible charges where circumstances indicate that it is to provide a subsistence living or to afford drugs for his/her consumption
 1. Possession for sale or transfer of a controlled substance
 2. Sale or transfer of a controlled substance
 3. Possession of a controlled substance
 4. Being under the influence of a controlled substance
 5. Being under the influence of alcohol and a controlled substance
 6. Prostitution



Services

- Community based programs (Glide and Felton)
 - 4 full time case managers (1:25 ratio)
 - 4 full time peer outreach workers/drivers
- Outreach and engagement in the community

Referrals in Mission District



Information Sharing & Engagement

Dedicated page on DPH website and email:

www.sfdph.org/dph/comupg/knowlcol/leadSF/Law-Enforcement-Assisted-Diversion-SF.asp

leadsf@sfdph.org

- Public postings of agenda & minutes
- Posting of relevant LEAD materials