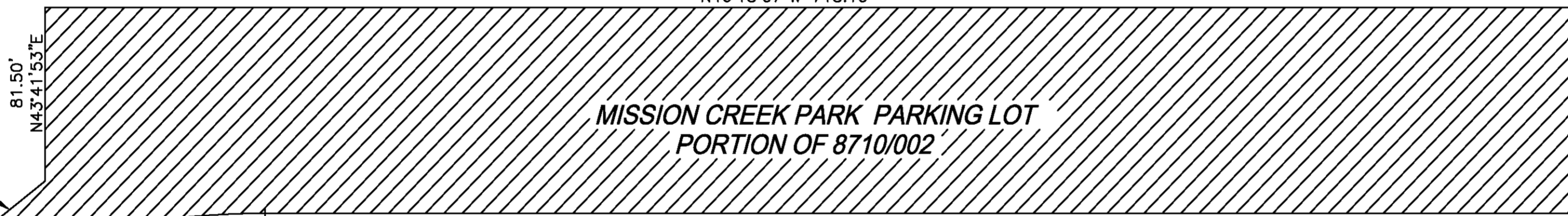


MISSION CREEK CHANNEL

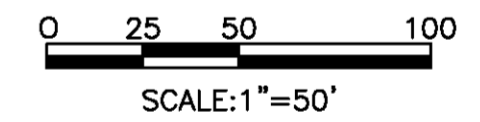
3810/006

N46°18'07"W 718.10'



MISSION CREEK PARK PARKING LOT
PORTION OF 8710/002

FUTURE CHANNEL
8710/005



LEGEND

 PUBLIC RIGHT-OF-WAY DEDICATION FOR PUBLIC PARK AND OPEN SPACE

EL DORADO STREET SOUTH

8710/007

8710/006

MISSION BAY CIRCLE

MAP SHOWING THE OPENING OF
MISSION CREEK PARK
PARKING LOT

RECORDER'S STATEMENT

FILED THIS ____ DAY OF _____, 2019, AT ____ .M.
IN BOOK _____ OF SURVEY MAPS, AT PAGE _____, AT THE
REQUEST OF THE COUNTY SURVEYOR OF THE CITY AND COUNTY
OF SAN FRANCISCO.

SIGNED _____
COUNTY RECORDER

APPROVED AS TO FORM:

BY: _____
CITY AND COUNTY SURVEYOR

APPROVED THIS ____ DAY OF _____, 2019

BY ORDER NO. ____.
DIRECTOR OF PUBLIC WORKS

THIS MAP, COMPRISING OF ONE (1) SHEET, IS APPROVED AND MADE
OFFICIAL AND THE PARCELS SHOWN HEREON ARE DECLARED TO BE
OPEN PUBLIC STREET, DEDICATED TO PUBLIC USE TO BE KNOWN
BY NAME AS SHOWN ON THIS MAP BY ORDINANCE NO. ____ DAY OF
_____, 2019.

CITY AND COUNTY OF SAN FRANCISCO
DEPARTMENT OF PUBLIC WORKS
BUREAU OF STREET USE AND MAPPING

SCALE: 1"= 50' | DATE: JUNE 10, 2019

REFERENCES:
BOOK Z OF SURVEY MAPS, PAGES 97-113

SHEET 1 OF 1 SHEETS | A-17-184