

PILIPINAS

GATEWAY PROPOSAL

Prepared by SOMA Pilipinas, Franceska Gamez, & Riz Gache

Web: somapilipinas.org

Email: raquel@somapilipinas.org, frankie@franceskagamez.com

Phone: 415-244-9734 (Raquel)

Table of Contents

2-5 • About the Artist

6 • Community Collaboration

7 • Location

8 • Design Inspiration

9-14 • Proposed Gateway Design

15 • Maintenance

16-23 Structural & Planning

About the Artist



WEB: franceskagamez.com
IG: @franceskagamez

Franceska Gamez is a visual artist, born in Manila and raised the Bay Area. Both cultures nurtured her identity and practice as the artist she is today. You can find her creating large-scale public murals, fully immersive installations, and tiny palm-sized sculptures. Her work is characterized by an elegant blend of abstract and representational forms in which she tells stories, illuminating emotions that envelope them. Her practice in the arts has led to dynamic bouts in installation, carpentry, writing, curation, art conservation, and project management. Her mural work can be seen throughout California, the East Coast, as well as overseas in Europe and Southeast Asia.

Select Collaborations: *For Freedoms, Woman Life Freedom Movement, The California Endowment, California Humanities, California Medical Association, The California Rice Commission, Sacramento Region Community Foundation, California Faculty Association, Greenpeace DC, San Francisco Arts Commission, Asian American Women Artists Association (AAWAA), California Auto Museum, Covered California, Market 5-1-5, Social and Public Art Resource Center (SPARC) LA.*



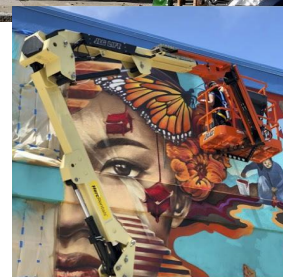
Select Work Samples



"Pasalubong" Franceska Gamez.
Commissioned by SOMA Pilipinas
& SF MOMA. 2021.



"Generations of Hope" Erin Yoshi & Franceska Gamez.
Commissioned by AAWAA & SF Arts Commission. Granted SF
Beautification Award. 2018.



Select Work Samples



North 12th Street Mural Series. Trust Your Struggle Collective. Commissioned by the City of Sacramento. Sacramento, CA. 2020-2022.

Design Inspiration

SOMA Pilipinas Is A Celebration Of Where We Come From, And Where WE ARE Going.

Pagmamano is a gesture used in Filipino culture. Its a sign of respect to elders and a way of accepting blessings



Traditional **wood carvings** from Paete, Laguna



The **golden sun** represents the first 8 provinces that led the Philippine Revolution against Spanish rule. It also symbolizes unity, freedom, democracy, & sovereignty.



Baybayin is one of the pre-colonial writing systems used by early Filipinos.



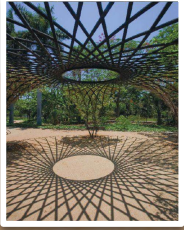
The Philippines is an archipelago, a string of over 7,100 islands. **Water** is a bridge that connects us & separate us, from island to island, across seas and to the diaspora.



The Gateway sculpture is a tribute to the rich history and legacy of Filipino/a/x-Americans and the SOMA community. It is a celebration and reminder of the significant role that we have played and continue to play in shaping the culture and identity of the United States. The symbols incorporated into the design share our traditions and values, such as *Bayanihan* and *Kapwa*, that have been passed down from generation to generation. With the sculpture, we harness sunshine to cast shadows of our golden sun, water, and *baybayin* across the intersection. Water is our bridge, it moves through our bodies as it does through land, nourishing us with the knowledge passed down from our ancestors, merging with the experiences from our unique lifetime. The bronze hands and leaves are inspired by traditional wood relief carvings. They hold vignettes of our journey, our *pamana* (heritage) and the ways we honor our culture through the gesture of *pagmamano*. We envision creating a gathering space, a symbol of belonging and pride for all neighbors and visitors alike.



SOMA Pilipinas Gateway Design



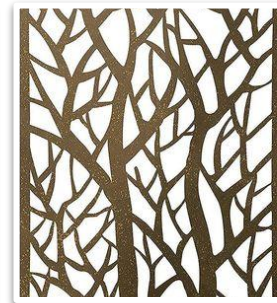
Sample shadow casting.



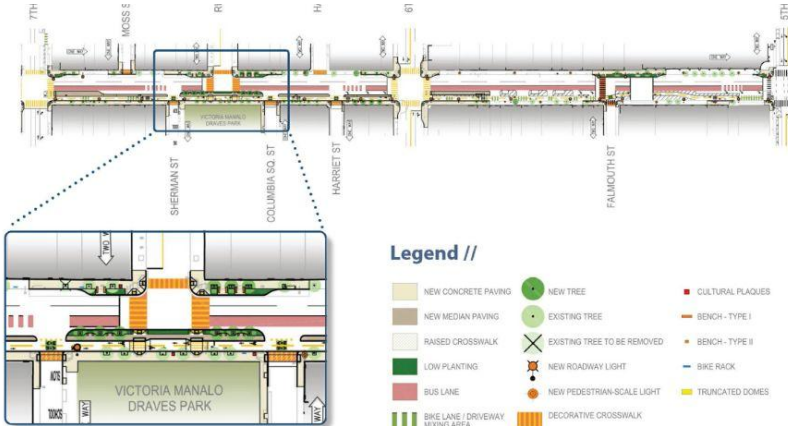
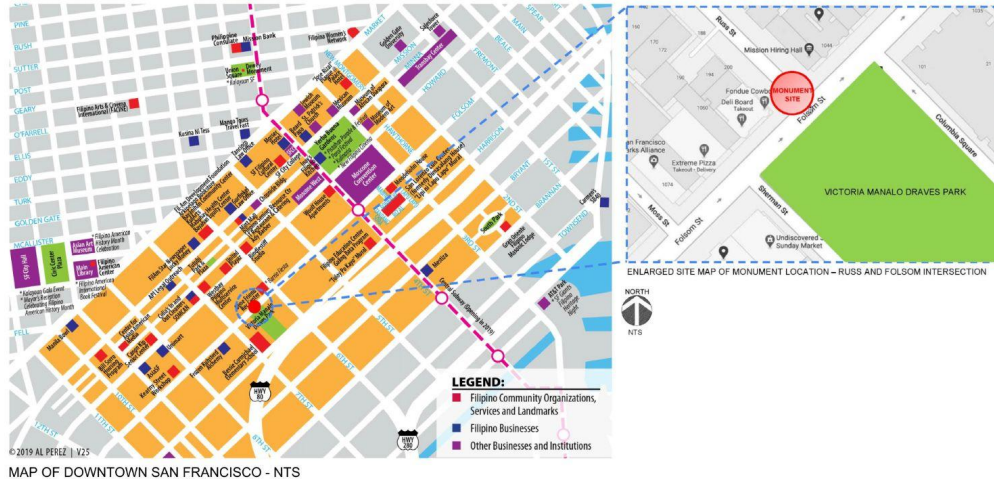
Gateway Material:

1. Arch (Facia): Laser cut $\frac{3}{8}$ " Painted stainless steel
2. Base relief: Cast bronze
3. Frame: 14"-16" diameter stainless steel tubing.
4. Mounts and fasteners: Stainless steel

Footing attachment to foundation: $\frac{3}{4}$ " Plate mounted



Location



SOMA Pilipinas Gateway Design

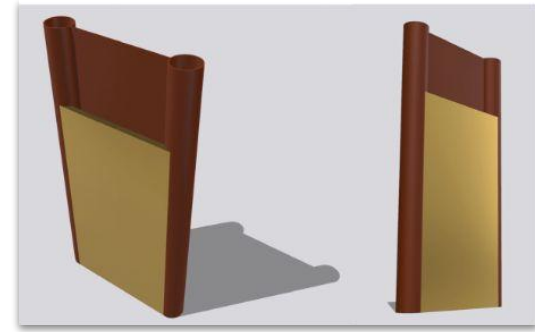
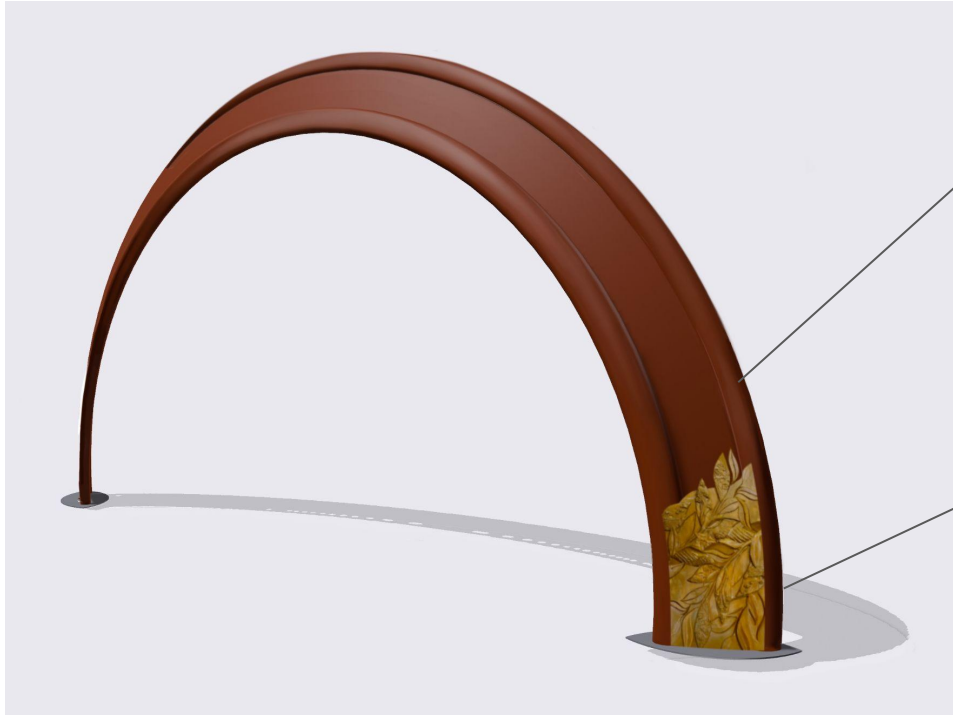
Pagmamana:

Tagalog. n. inheriting; inheritance; heredity



SOMA Pilipinas Gateway Design

Basic structure with footing & bronze relief plates.

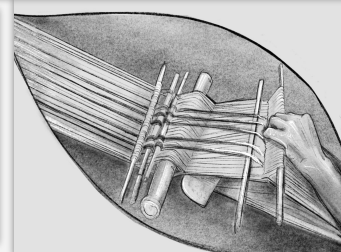
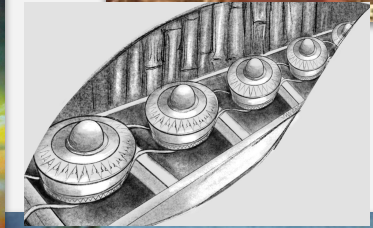
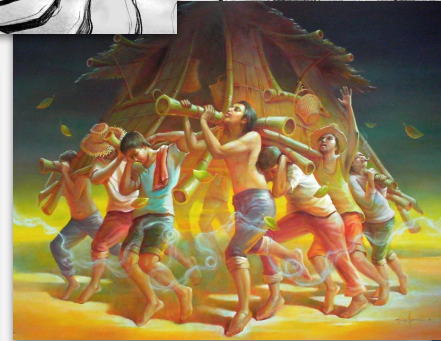
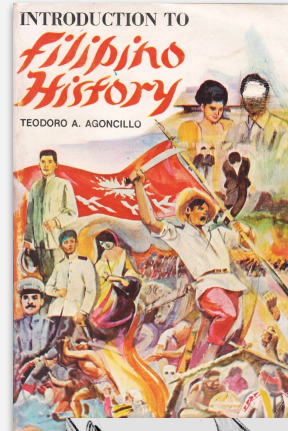


Embedded within the leaves are intricate, symbolic vignettes cast in bronze. On the left, the past and present converge, paying tribute to our ancestors. On the right, the present and future intersect, showcasing the enduring legacies that span generations.



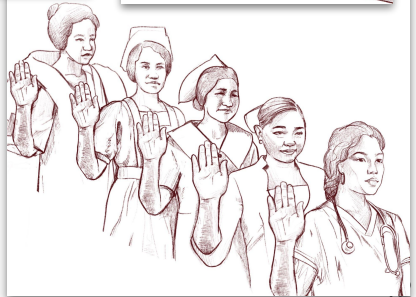
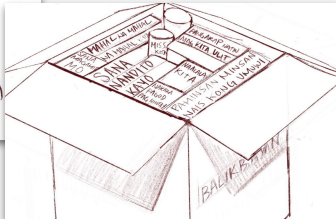
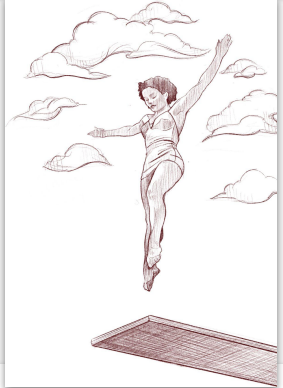
Bronze Relief Images - Left Side

- Hands emphasize honoring our history, ancestors & heritage.
- Connection to motherland.
- Highlighting indigenous tribes.
- Legacy of cultural preservation.
- Anti colonial resistance.



Bronze Relief Images - Right Side

- Hands emphasize care for future generations.
- Capturing the character of our community & diversity within the diaspora.
- Illustrates our contributions & legacies: Labor movements, housing rights, ethnic studies, multi-racial solidarity, art & activism, local heroes, nurses, veterans, mothers.



Community Collaboration

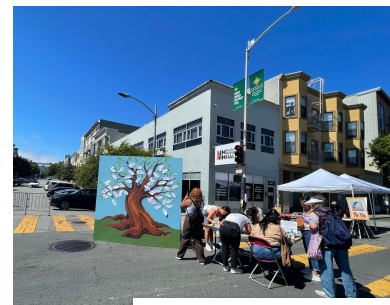


“The SOMA Gateway design is not only symbolic, historical, unifying our different regions and respectful of our elders. But it is also unique and ingenious because of the shadow-casting effect across the Russ and Folsom Street intersection.”



“Very much needed presence in the SOMA District”

“Love to see more Asian culture spreading their voices”



“This district gateway design highlights that we are Filipino-American and part of the diaspora. It's like a bridge, because it honors our heritage but it also honors our present.”



SOMA Pilipinas presented initial gateway design proposals at the Moss St. Block Party in July 2021, more than a year after the release for a call for design proposals. Community members shared their feedback and selected Gamez' piece.

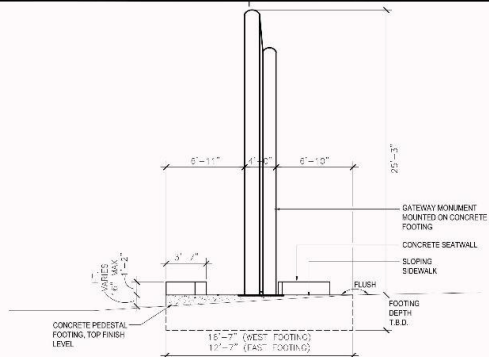
The design and model was shared at 4 community events, 1 virtual presentation, and 2 ethnotours involving Balboa HS and Bessie Carmichael Elementary. Community members were invited to share their feedback by filling surveys and offering testimonials.

SOMA Pilipinas also hosted a total of 9 feedback sessions with our SOMA Pilipinas Community Advisory Groups including SOMA/TL Residents, School Communities, Artists, Seniors, Small Business Owners, Community Workers, and Youth.

Full list of engagements included in notes.

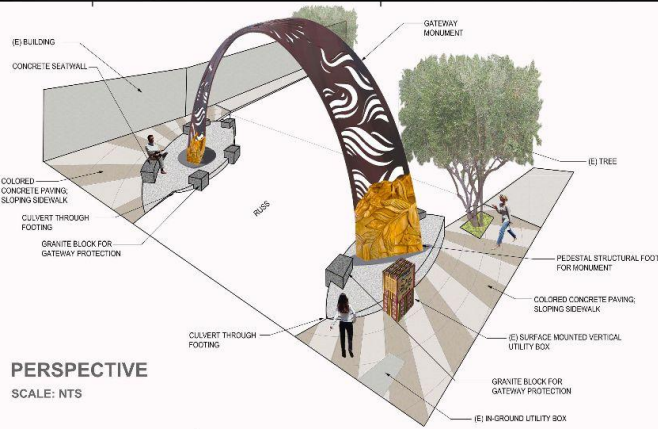
SURVEY STATS:

- 84% of respondents shared they would love to see this district gateway design as a public art piece in SOMA Pilipinas- Filipino Cultural Heritage District.
- 79% of respondents shared that this district gateway design makes them want to learn more from Filipino/x communities in San Francisco.
- 84.2% of respondents shared that they would be excited to visit the incoming SOMA Pilipinas Gateway with family, friends, and other community members.



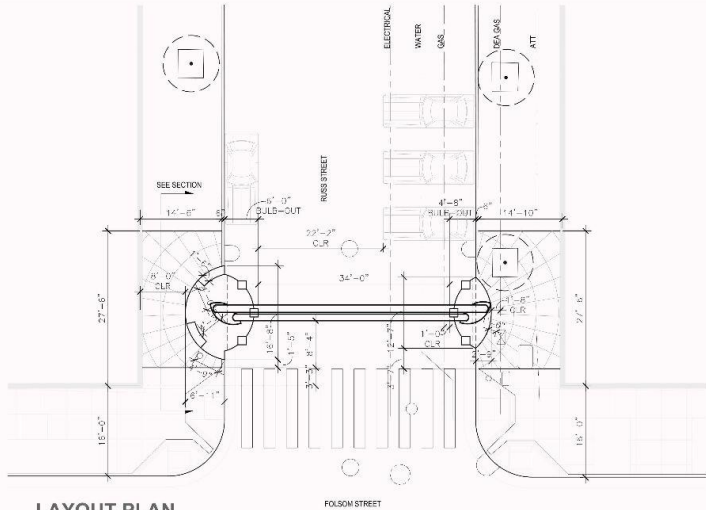
NORTH SOUTH SECTION THROUGH BULB-OUT

SCALE: 1/4" = 1'-0"



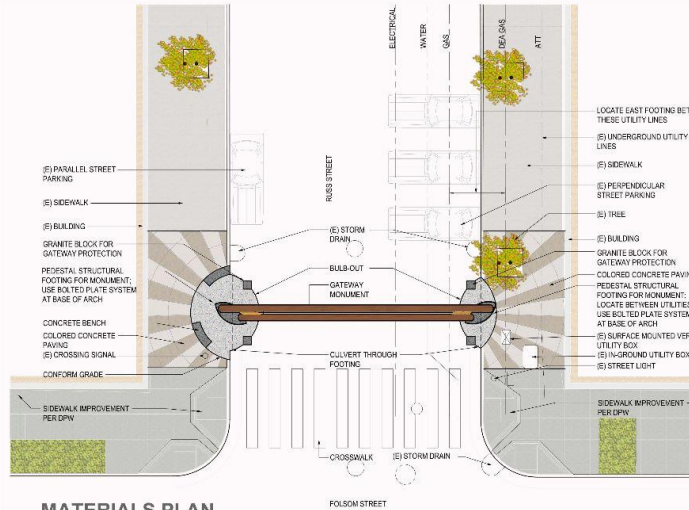
PERSPECTIVE

SCALE: NTS



LAYOUT PLAN

SCALE: 1/8" = 1'-0"



MATERIALS PLAN

SCALE: 1/8" = 1'-0"

LANDSCAPE ARCHITECT:
Riz Gache Design
Landscape Architecture
San Francisco, CA
www.rizgachedesign.com
P: 415.625.0201

CLIENT:
SOMA PILIPINAS

FILIPINO CULTURAL HERITAGE DISTRICT
GATEWAY MONUMENT
RUSS STREET AT FOLSOM
SAN FRANCISCO, CA 94103

DRAWN BY:
PROJECT NO: 21-2001
DATE: ISSUE
09/20/22 PROCSB-NFA
09/20/22 PROCSB-DPW
10/05/22 REVISION
10/27/22 PRE-SUBMIT
01/09/23 SUBMITAL

SHEET DESCRIPTION:

LANDSCAPE PLANS AND ELEVATIONS

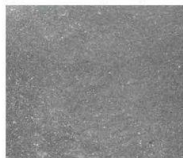
L4.0



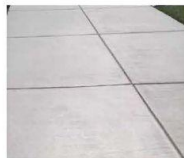
PRE-CAST CONCRETE



GRANITE CUBE



CONCRETE PAVING WITH 'SPARKLE' COLOR HARDENER TREATMENT



STANDARD CONCRETE



GRANITE PAVER



PRECAST COLORED TILE / PAVER

LANDSCAPE ARCHITECT:

Riz Gache Design
Landscape Architecture
San Francisco, CA
www.rizgachedesign.com
707.528.8281

CLIENT:

SOMA PILIPINAS

③ VEHICULAR SAFETY BARRIER



IN-GROUND RECESSED LED UPLIGHT IN SERIES AT BASE OF SEATWALL



IN-GROUND RECESSED LED UPLIGHT FOR GATEWAY

④ SITE LIGHTING

① PAVING SURFACE



CONCRETE SEATWALL - WITH MOSAIC ARTWORK



CONCRETE SEATWALL - FLAIN, SANDBLAST FINISH

② CONCRETE SEATWALL

FILIPINO CULTURAL HERITAGE DISTRICT
GATEWAY MONUMENT

RUSS STREET AT FOLSOM
SAN FRANCISCO, CA 94103

DRAWN BY:

PROJECT NO: 21-2001

DATE: ISSUE

09/20/22 PROGRESS-VTA

02/19/22 PROGRESS-DPW

10/19/22 RESUBMIT

03/17/22 PRE-SUBMIT

04/08/22 VAC SUBMITTAL

SHEET DESCRIPTION:

MATERIALS BOARD

L6.0