

REFERENCES:

APPROVED:

BRUCE R. STORRS  
CITY & COUNTY SURVEYOR

DATE

BY

DATE

CITY AND COUNTY OF SAN FRANCISCO  
DEPARTMENT OF PUBLIC WORKS

CHANGE

DRW

OK

APP

FILE:

SUR: 2015-004

SHEET 1 OF 1

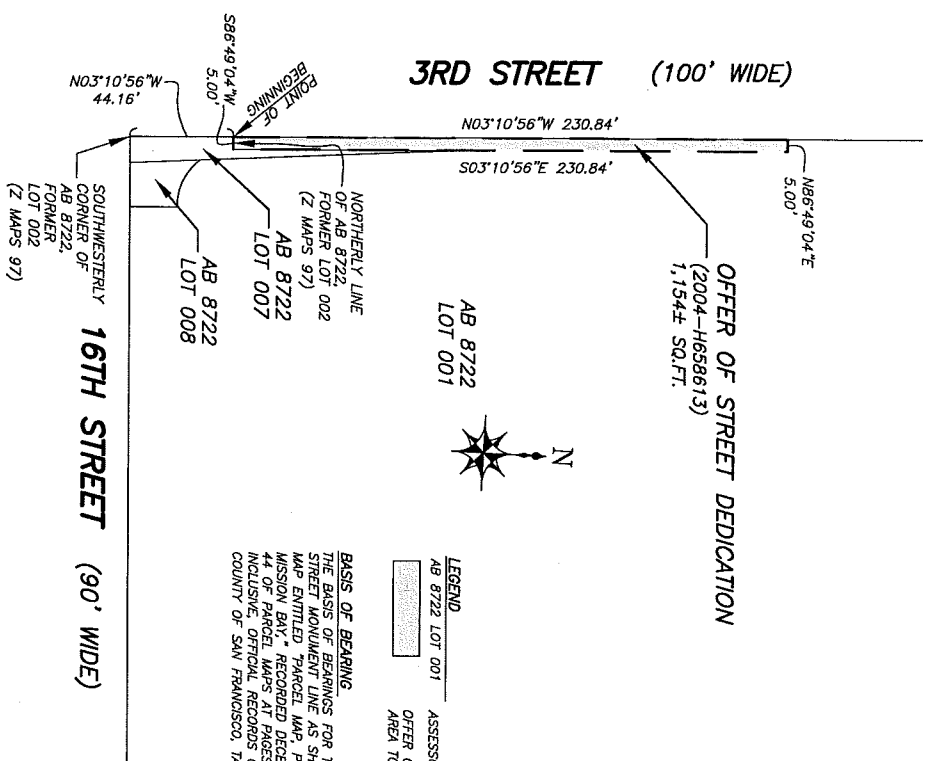
VACATION OF UTILITY EASEMENTS  
WITHIN ASSESSOR'S BLOCK 8722

SCALE: 1:100

**LEGEND**  
 AB 8722 LOT 001 ASSESSOR'S LOT & BLOCK  
 EASEMENT AREA TO BE VACATED

**BASIS OF BEARING**  
 THE BASIS OF BEARINGS FOR THIS PLAN IS THE THIRD STREET MONUMENT LINE AS SHOWN ON THAT PARCEL MAP ENTITLED "PARCEL MAP, PLANNED DEVELOPMENT MISSION BAY," RECORDED DECEMBER 7, 2000 IN BOOK 44 OF PARCEL MAPS AT PAGES 151 TO 155, INCLUSIVE, OFFICIAL RECORDS OF THE CITY AND COUNTY OF SAN FRANCISCO, TAKEN AS N03°10'56"W.

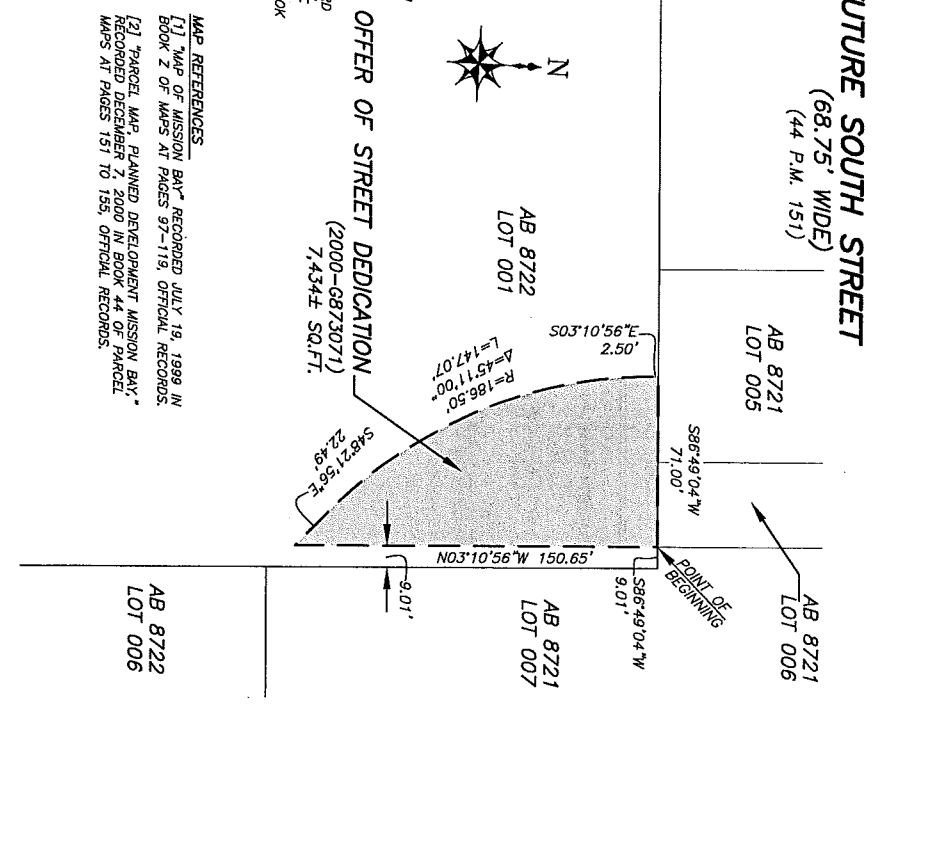
**MAP REFERENCES**  
 [1] "RECORD OF SURVEY MAP OF MISSION BAY," RECORDED JULY 28, 1992 IN MAP BOOK Y, AT PAGES 62-82, OFFICIAL RECORDS.  
 [2] "MAP OF MISSION BAY," RECORDED JULY 19, 1999 IN BOOK Z OF MAPS AT PAGES 97-119, OFFICIAL RECORDS.  
 [3] "PARCEL MAP, PLANNED DEVELOPMENT MISSION BAY," RECORDED DECEMBER 7, 2000 IN BOOK 44 OF PARCEL MAPS AT PAGES 151 TO 155, OFFICIAL RECORDS.



**LEGEND**  
 AB 8722 LOT 001 ASSESSOR'S LOT & BLOCK  
 OFFER OF STREET DEDICATION  
 AREA TO BE VACATED

**BASIS OF BEARING**  
 THE BASIS OF BEARINGS FOR THIS PLAT IS THE THIRD STREET MONUMENT LINE AS SHOWN ON THAT PARCEL MAP ENTITLED "PARCEL MAP, PLANNED DEVELOPMENT MISSION BAY," RECORDED DECEMBER 7, 2000 IN BOOK 155, OFFICIAL RECORDS OF THE COUNTY OF SAN FRANCISCO, TAKEN AS N03°10'56\"/>

**MAP REFERENCES**  
 [1] "MAP OF MISSION BAY" RECORDED JULY 19, 1999 IN BOOK 2 OF MAPS AT PAGES 97-119, OFFICIAL RECORDS.  
 [2] "PARCEL MAP, PLANNED DEVELOPMENT MISSION BAY," RECORDED DECEMBER 7, 2000 IN BOOK 44 OF PARCEL MAPS AT PAGES 151 TO 155, OFFICIAL RECORDS.



REFERENCES:

APPROVED:

BRUCE R. STORRS  
 CITY & COUNTY SURVEYOR

DATE

BY DATE

CITY AND COUNTY OF SAN FRANCISCO  
 DEPARTMENT OF PUBLIC WORKS

VACATION OF OFFER OF STREET DEDICATIONS  
 WITHIN ASSESSOR'S BLOCK 8722

FILE:  
 SUR: 2015-005

SHEET 1 OF 1

SCALE: 1:50

CHANGE