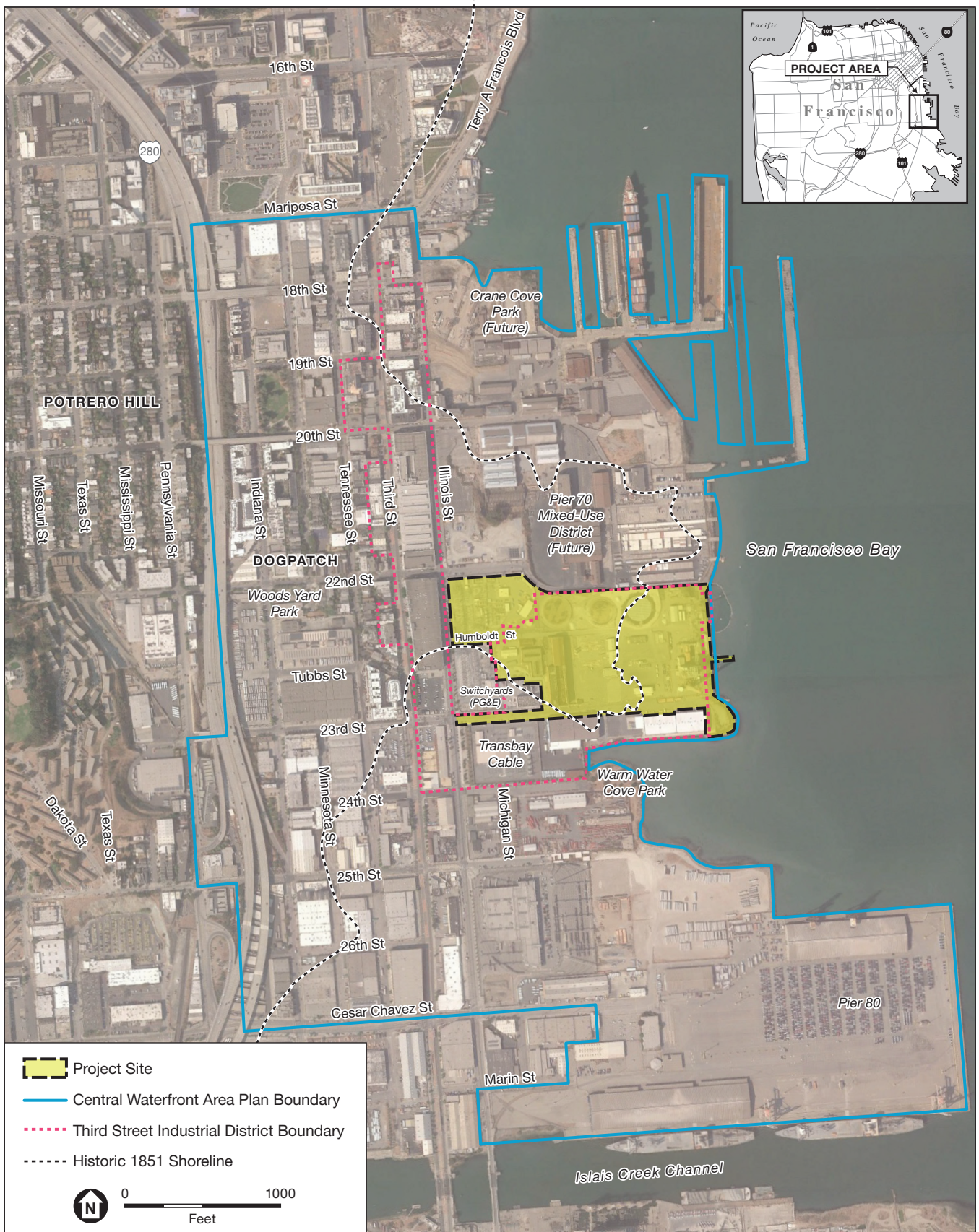


Exhibit 1: Site Location



SOURCE: Google Earth, 2017; ESA, 2018

Potrero Power Station Mixed-Use Development Project

Exhibit 2: Land Use Program



LEGEND

- Residential
- Office / R&D
- Hotel and/or Residential
- Open Space
- Project Site Boundary
- * Potential District Parking Garage and Publicly Accessible Rooftop Soccer Field Location

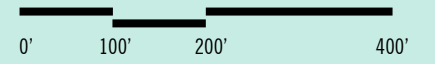
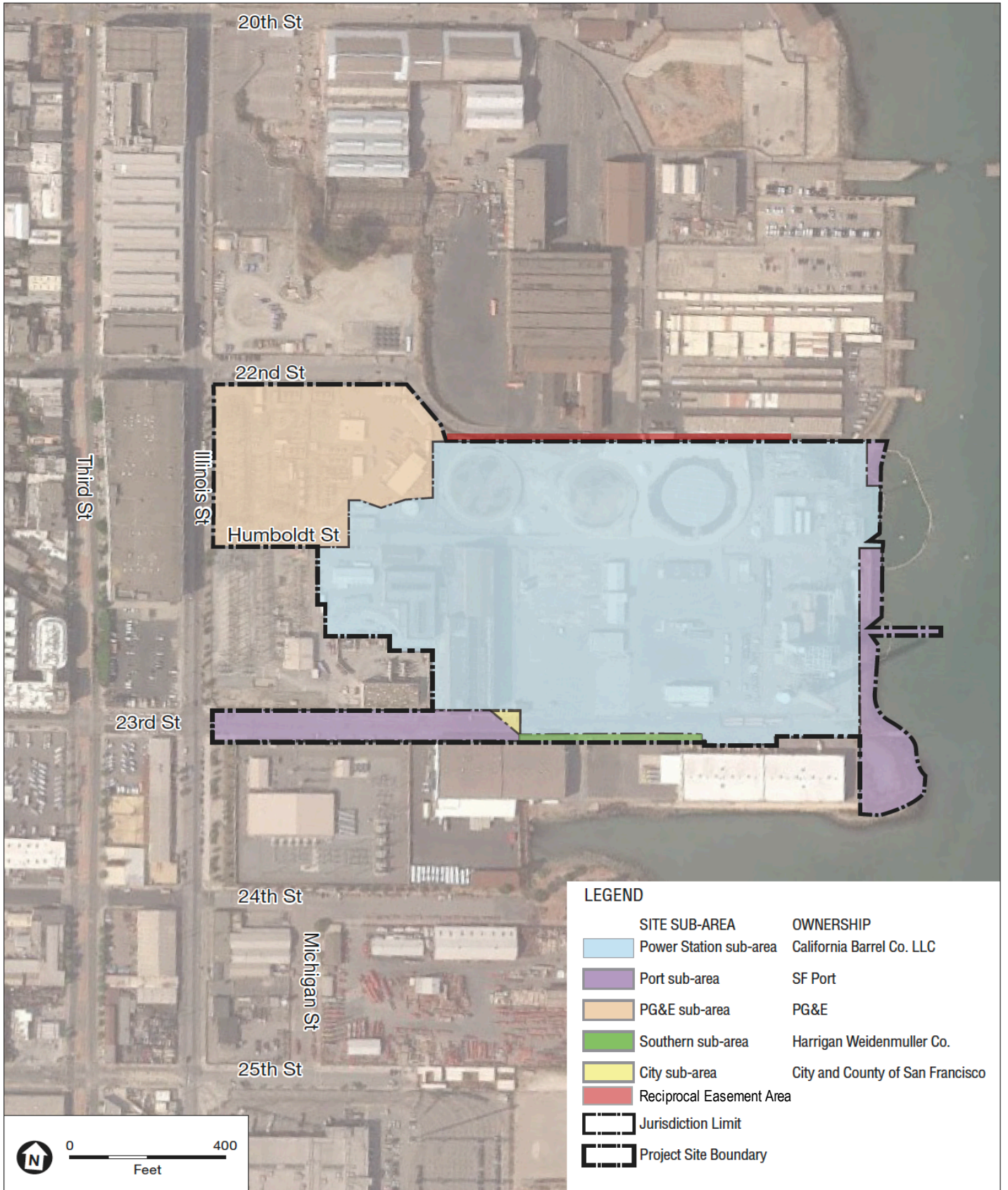


Exhibit 3: Property Ownership

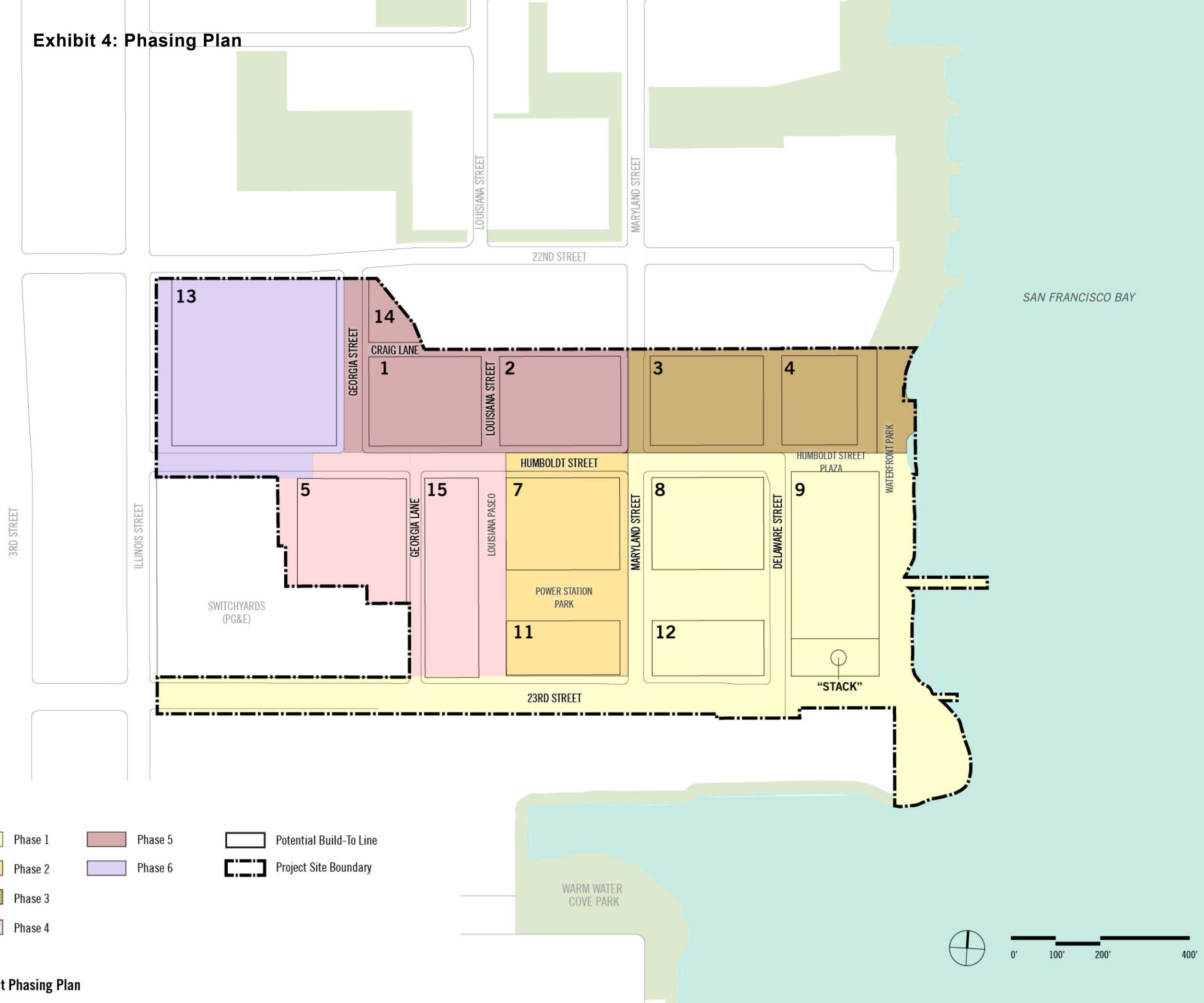


SOURCE: Perkins+Will 2017; Google Earth, 2017; ESA, 2018

Potrero Power Station Mixed-Use Development Project

Project Site Sub-Areas and Ownership

Exhibit 4: Phasing Plan



LEGEND

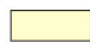

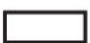




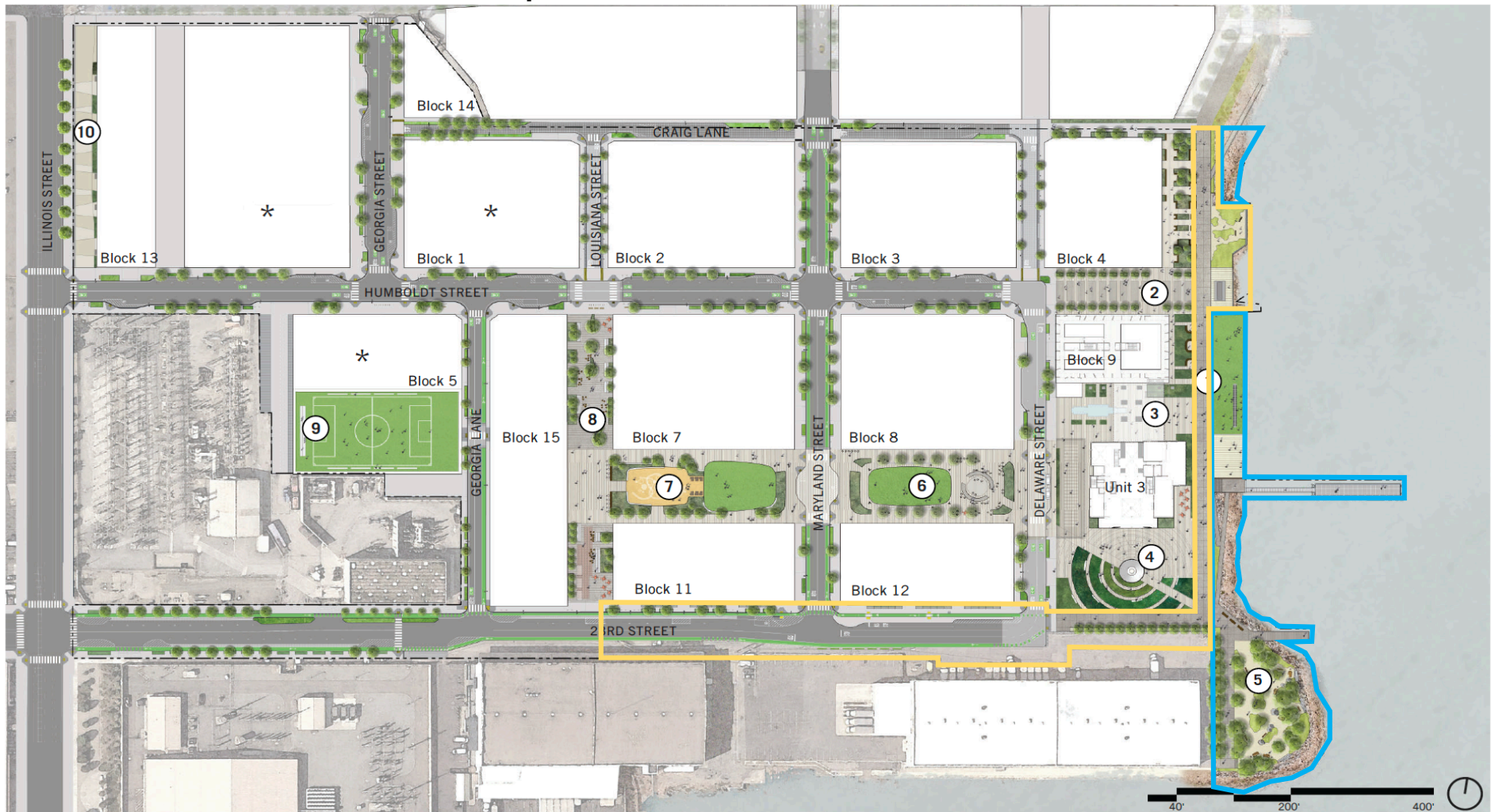
- | | | |
|--|---|---|
|  Phase 1 |  Phase 5 |  Potential Build-To Line |
|  Phase 2 |  Phase 6 |  Project Site Boundary |
|  Phase 3 | | |
|  Phase 4 | | |

Exhibit 5: Public Trust Easement Option



- ① Waterfront Open Spaces: Section 4.16-4.19
 - ② Humboldt Street Plaza: Section 4.24
 - ③ Block 9 Open Space: Section 4.22-4.23
 - ④ Stack Plaza: Section 4.21
 - ⑤ The Point: Section 4.20
 - ⑥ Power Station Park East: Section 4.28
 - ⑦ Power Station Park West: Section 4.29
 - ⑧ Louisiana Paseo: Section 4.30
 - ⑨ Rooftop U-10 Soccer Field: Section 4.31
 - ⑩ Illinois Street Plaza: Section 4.32
- * Rooftop Soccer Field will be at the District Parking Garage, which may be at Block 1, Block 5, or Block 13

Port Lands = 1.6 acres

Public Trust Easement Parcel = 2.0 acres (Waterfront Open Spaces = 0.9 acres, 23rd Street ROW = 0.9 acres, Other = 0.2 acres)