

File #180337  
Received in Committee  
4/26/18  
jm

# SFPD POLICY PRIORITIES

FY 2018-2019



CITY & COUNTY OF SAN FRANCISCO

Police Department  
Office of the Chief of Police

Chief Scott | Catherine McGuire

04.26.18

## Strategic Plan 1.0 Initiative Clusters

- Collaborate
- Improve Responsiveness
- Measure and Communicate
- Strengthen the Department
- Define the Future

## Strategic Plan 1.0 Highlights

- **Public Safety:** Safe Neighborhoods
- **Quality of Life:** Homeless and Harm Reduction
- **Trust and Accountability:** Reforms
- **Community Engagement:** Partnership and Outreach
- **Resources:** Improve Technology
- **Diversity:** Ensure a Diverse and Inclusive Workforce

# Chief's Four Operational Priorities

4

SFPD

1. **VIOLENT CRIME**
2. **PROPERTY CRIME**
3. **HOMELESS AND HARM REDUCTION**
4. **FOOTBEAT COVERAGE**

## VIOLENT CRIME

Improve  
Responsiveness

---

Measure and  
Communicate



## Highlights and Potential Expansion

---

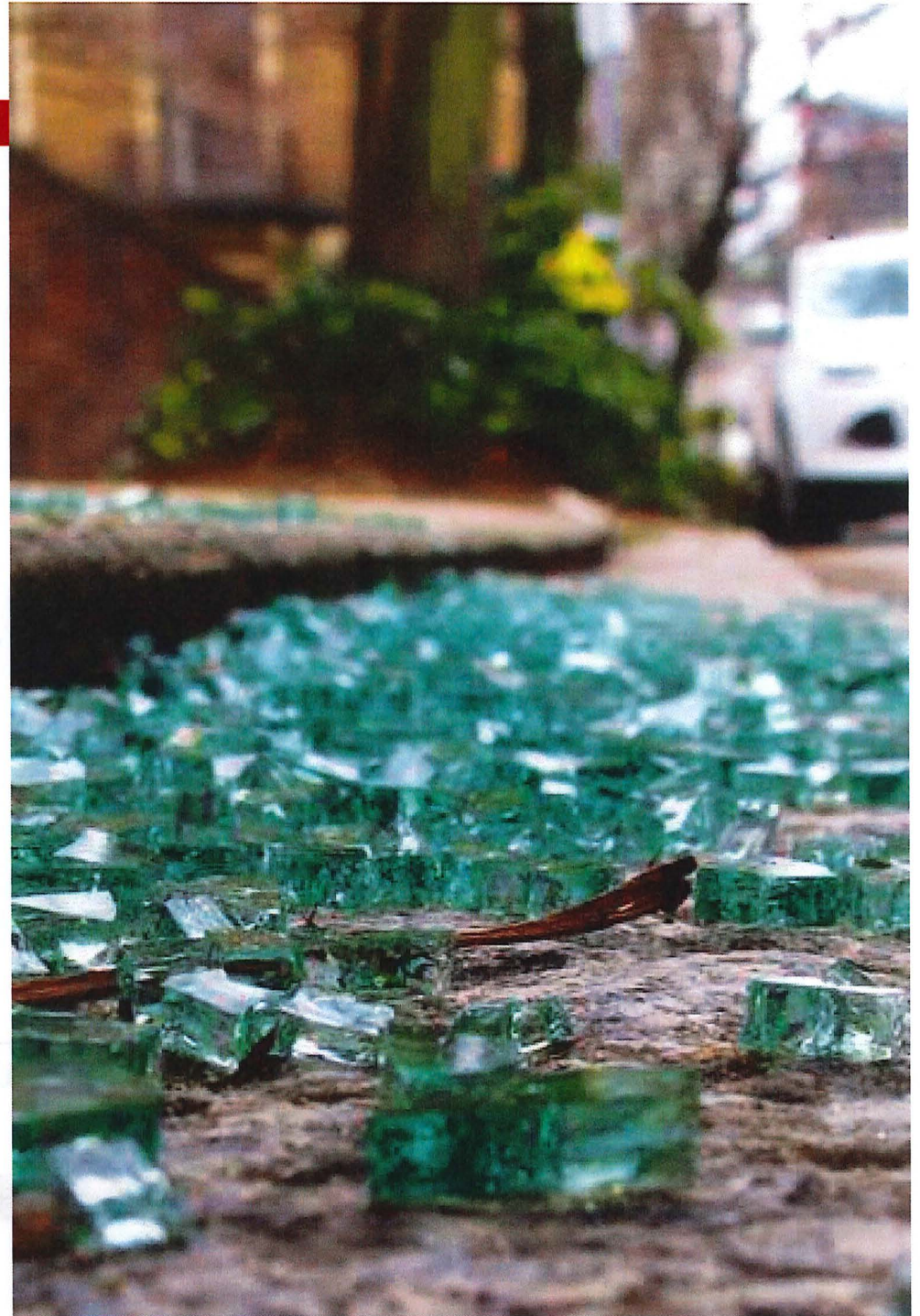
- Re-establishment of centralized unit to investigate high-profile serial cases with more sophisticated networks
- General Crime Unit/Citywide: Night Investigation Unit; Narcotics; Burglary
- Crime Gun Intelligence Center (CGIC): collaboration between PD, ATF, Crime Lab, community groups, prosecuting attorneys, in order to ID armed violent offenders
- Community Engagement:
  - Street Violence Response Team
  - DPH Partnership: Support for Survivors of Violent Crimes

## PROPERTY CRIME

Improve  
Responsiveness

---

Measure and  
Communicate



## Highlights and Potential Expansion

---

- Station Investigation Team (SIT) members to be available for consistent coverage, seven days per week
- Re-establishment of centralized unit to investigate high-profile serial cases with more sophisticated networks
- Property Crimes Coordinator
- Fingerprint Training: Auto Burglary
- Plainclothes in every District and undercover Serial Crimes Unit personnel can perform surveillance on serial burglars as soon as they are identified. These personnel work bigger cases and tie multiple suspects together
- Analysts to develop support by reviewing incident and other data to help investigators understand problems and develop solutions
- Prevention Efforts: Park Smart



# HOMELESS AND HARM REDUCTION

Improve  
Responsiveness

---

Collaborate



# Homeless and Harm Reduction

10

SFPD

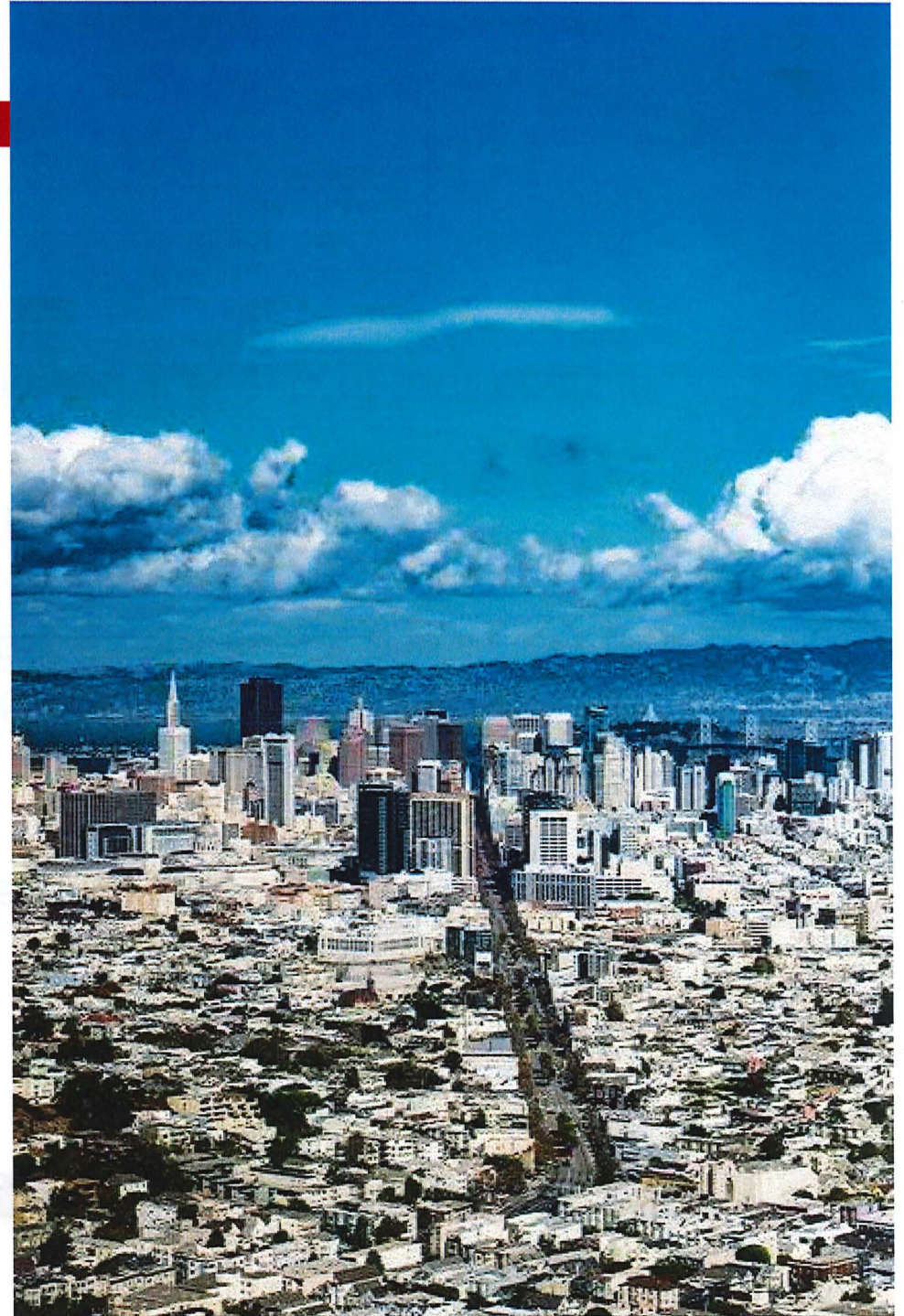
## Highlights and Potential Expansion

---

- Healthy Streets Operations Center (HSOC)
- Homeless Outreach Officers available for two shifts throughout the City to respond to calls for service(based on call volume)
- Patrol officers deployed across major encampments, 24-7
- Officers accompany clinicians to perform outreach and ensure employee safety - Psychiatric Emergency Response Teams (PERT)

## FOOTBEAT COVERAGE

Improve  
Responsiveness



## Highlights and Potential Expansion

---

- District-specific strategies developed to address problem areas based on crime characteristics
- Maintaining the increased foot patrol presence in the Districts to encourage a sense of safety among the community and deter crime
- Increase visibility to decrease auto burglaries
- Academic Institution to conduct analysis of effects of foot beats in San Francisco

## Budget Requests to Support Priorities

---

- STAFFING
- FLEET
- REFORM
- TECHNOLOGY
- FACILITIES

## STAFFING

- **Sworn**
  - **Foot beats**
  - **HSOC**
  - **Auto Burglary**
  - **Investigations**
  
- **Civilian**
  - **ID civilian support opportunities to maximize use of sworn staff**
  - **Additional analytical capacities**

## FLEET

- **Modernize Fleet**
- **Implement Replacement Schedule**
- **Upgrade Vehicle Safety Measures**
- **Reduce Maintenance Costs**
  - **Unmarked Fleet:**
    - **70% are over 10 years old**
    - **50% in excess of 100k miles**
  - **Marked Fleet:**
    - **30% are over 10 years old**
    - **30% in excess of 100k miles**

## REFORM

- DOJ
- Tasers/CEDs
- E-Stops/Reporting
- Website Updates
- Staff deployment to address homeless/mental crisis
- Professional Services
  - Monitoring Progress
  - External and Internal Surveys
  - Program Evaluation
  - Strategic Plan



Thank you.  
Any Questions?

SAN FRANCISCO  
POLICE DEPARTMENT

