

Proactive Citywide Trauma Response to Gun Violence

San Francisco Department of Public Health
Division of Behavioral Health Services
December 1, 2022

Stephanie Felder
Director of Crisis Services



San Francisco Health Network
Behavioral Health Services

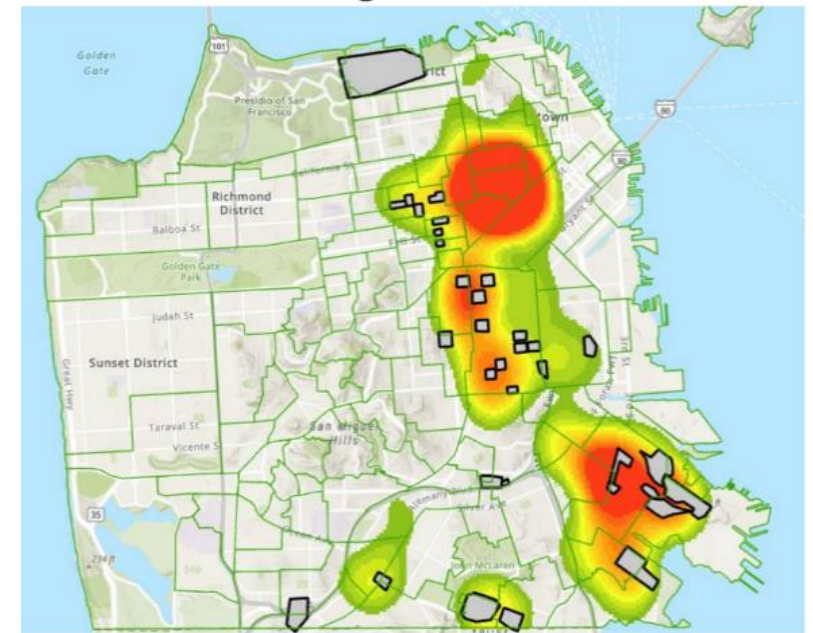
BOS Resolution Passed On May 24, 2022

- Within 90 days from passage, create a proposed protocol and implementation plan to respond proactively with information and connections to resources following instances of gun-related community trauma, including:
 - Response within 72 hours of the incident of gun violence
 - Outreach through flyering, phone calls, community events, or other means of reaching people within a one-block radius from the incident to notify community members of available trauma counseling resources
 - A clear delineation of duties between departments, service providers, and any other City-affiliated agencies as needed to implement the protocol



Impact of Gun Violence in SF

- Gun violence, especially among youth, has serious and lasting effects on **physical, behavioral, and social health**.
- Those who experience violence as victims, perpetrators, or witnesses are more likely to have behavioral and mental health difficulties, including: increased depressive symptoms, anxiety, post-traumatic stress, and aggression.
- A recent analysis of gun violence in San Francisco found:
 - 85% of those impacted by gun violence are Black and Latino men
 - 29% of all violent gun crimes in 2019 took place in Bayview, Potrero Hill, and Visitacion Valley neighborhoods, with a quarter of all the City's homicides for the past five years occurring there.



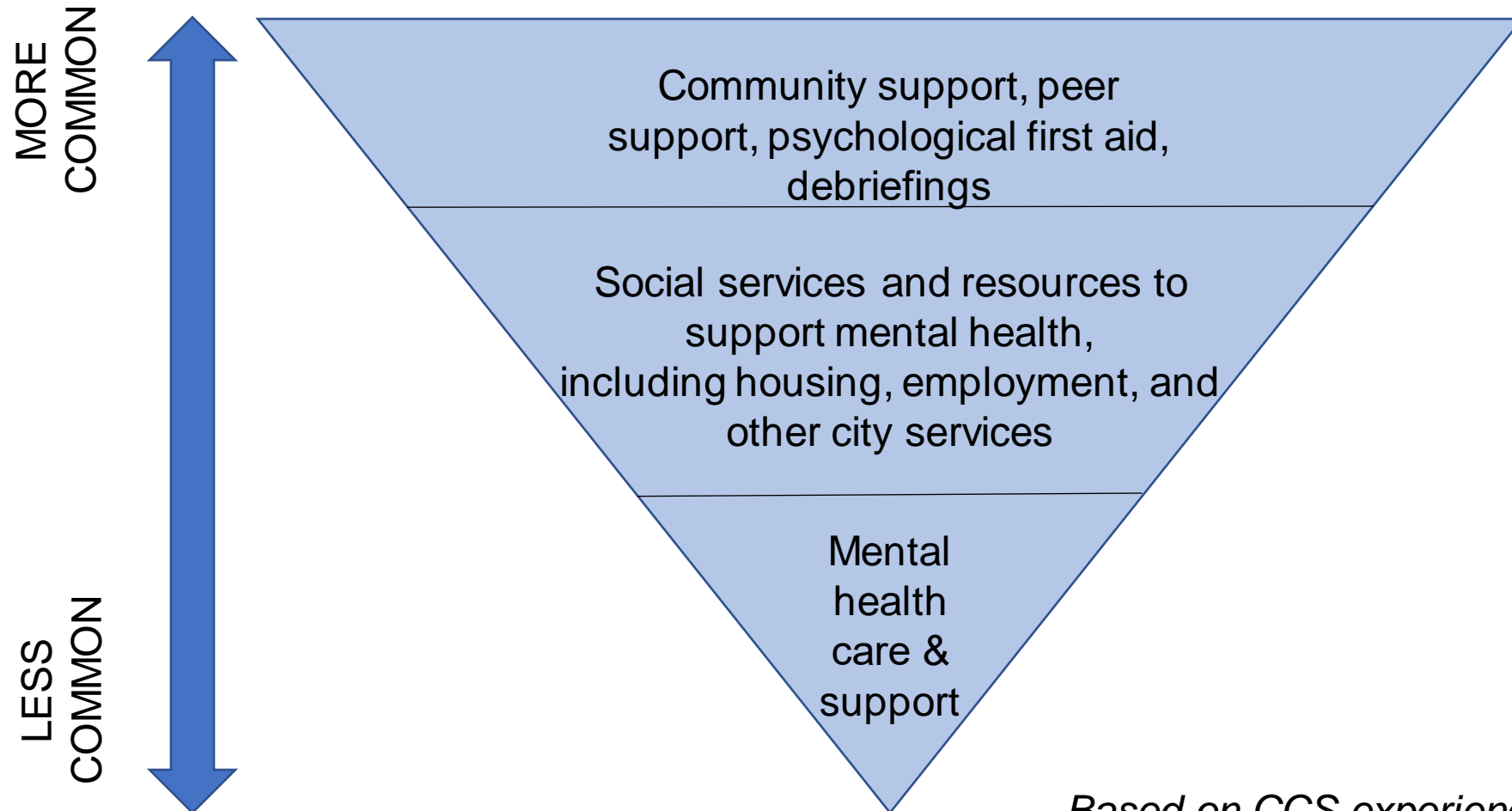
Heat map of incidences of gun violence and homicides, 2017-2020

Interventions that Address the Impacts of Gun Violence

Intervention Types	Examples of Interventions	San Francisco Programs
Social and health services for those who experience/are exposed to gun violence	Case management and supportive services, hospital-based violence prevention services, school-based services, and mental health services	<ul style="list-style-type: none"> • Comprehensive Crisis Services • Wraparound Project & Trauma Recovery Center • Neighborhood specific CBOs
Direct Community Outreach	Townhalls and community dialogues, community ambassador programs	<ul style="list-style-type: none"> • Street Violence Intervention Program (SVIP) • Community providers • Townhalls (SFPD, BOS, etc.)
Public awareness of victim services	Centralized online directory of services, public awareness campaign	<ul style="list-style-type: none"> • DA Victim Services
Coordination and collaboration of victim service providers	Improve referral mechanisms and linkages, Implement a shooting response protocol, regular convenings of services providers/CBOs	<ul style="list-style-type: none"> • Street Violence Response Team (SVRT)

This resolution focuses on outreach about mental health services

Types of Support Needed in Communities Impacted by Shootings



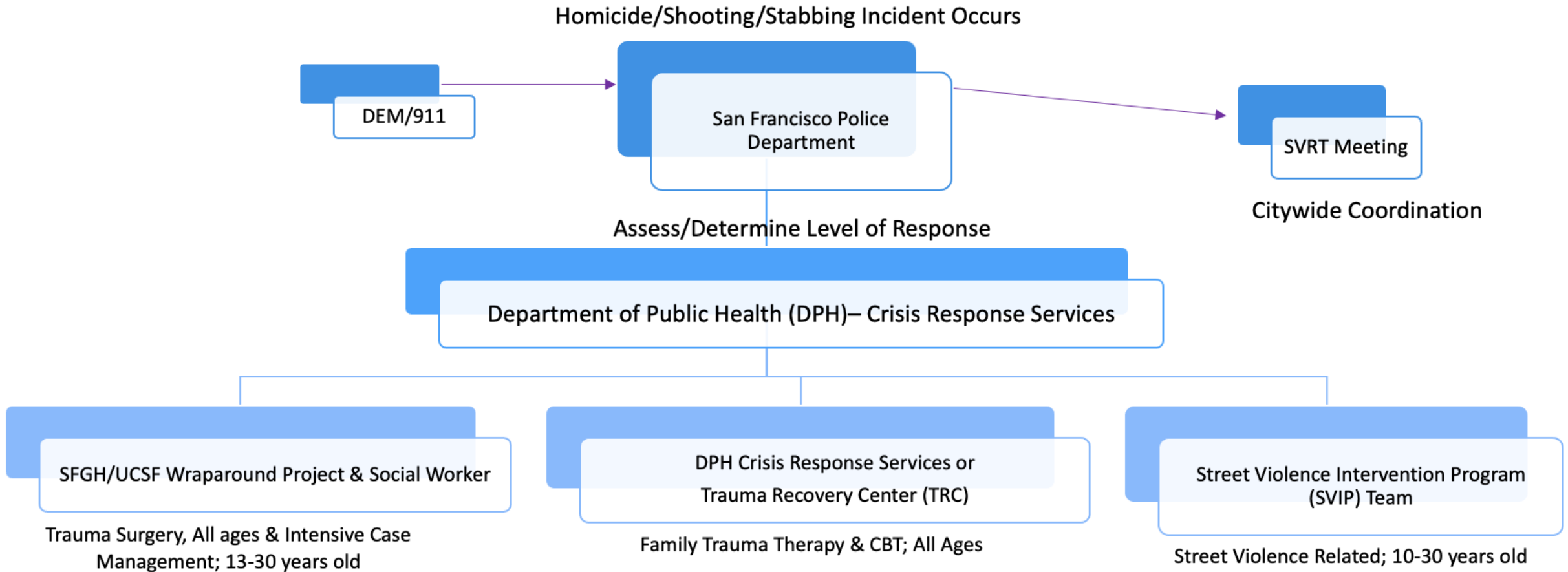
Based on CCS experience in SF



San Francisco Health Network
Behavioral Health Services

Current Violence Response Notification System

Comprehensive Crisis Services (CCS) is already notified by SFPD immediately following a shooting



DPH's Approach in response to the BOS Resolution

1. Engaged community partners and City departments that are already doing important work related BH response to gun violence
2. Developed an initial draft of a response protocol
3. Sought specific input from City and community partners to inform next steps



Engagement with Community Partners and City Agencies

- DPH facilitated three community meetings between July and August with Community Partners and City Agencies

Community Organizations	City Agencies
<ul style="list-style-type: none"> Bayview Hunters Point Foundation Booker T Washington CARE Community Youth Center Green Streets Homeless Children's Network Latino Taskforce Mission Peace Collaborative Rafiki Coalition Potrero Hill Stand in Peace Richmond Area Multi-Services Samoan Community Development Center Street Violence Intervention Program Trauma Recovery Center TURF United Playaz Westside Crisis YCD YMCA Other Community Members 	<ul style="list-style-type: none"> Department of Public Health* Department of Emergency Management* San Francisco Fire Department* San Francisco Police Department * Department of Children, Youth, and Families* Department on the Status of Women* Department of Homelessness and Supportive Housing Mayor's Office of Housing and Community Development Mayor's Office of Public Safety District Attorney Human Rights Commission MTA

Key Themes from Stakeholders / Principles and Values

Key Themes from Stakeholders

- Communities most impacted by gun violence are informally responding to incidents but need more support and resources
- Direct onsite response would be the most trusted approach to provide information to the community.
- Social services often needed in response to incidents of gun violence
- Services need to be culturally responsive.

Principles and Values Guiding the Development of the Protocol

- Recognize and support the work already being done by the Community
- Center the imperative to address racial equity
- Meet people where they are
- Acknowledge system limitations
- Recognize the need for other social supports
- Resources need to be culturally congruent

PROPOSED Protocol for a Citywide Trauma Response to Gun Violence – Part 1

A. Notification/Communication Following Gun Violence Incident

- a. SFPD notifies DPH's Comprehensive Crisis Services about a fatal or non-fatal shooting
- b. Within 24-hours, Comprehensive Crisis Services contacts a Gun Violence Healing Response Outreach Coordinator(s) who contact appropriate Community Provider(s) based on impacted:
 - i. Neighborhood
 - ii. Cultural Community

B. Outreach Coordination

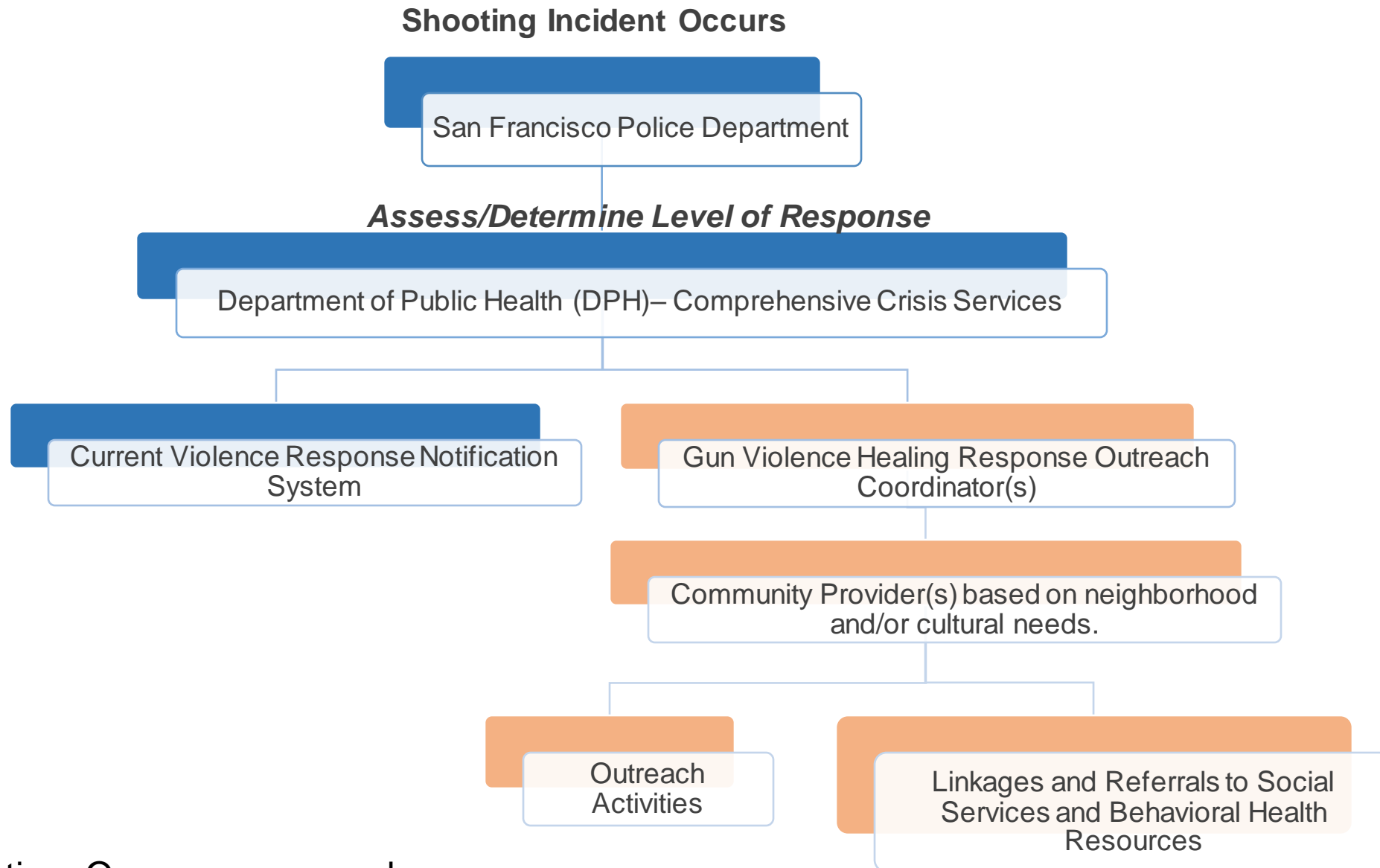
- a. Coordinator and Community Provider(s) make a plan for outreach within 72 hours and within a 1-block radius (at a minimum) of the shooting
- b. Examples Outreach Activities:
 - i. In-person presence with community
 - ii. Strategies to support mental health, wellbeing and healing, including psychological first aid
 - iii. Facilitate and participate in community-driven healing groups, activities, and meetings
 - iv. Navigation to social services and behavioral health resources
 - v. Providing information on available resources

PROPOSED Protocol for a Citywide Trauma Response to Gun Violence – Part 2

C. Linkages and Referrals to Social Services and Behavioral Health Resource

- a) Community Providers would provide information on linking impacted community members to healing resources.
 - i. Examples of how information can be provided:
 1. Flyers
 2. Phone Calls
 3. Community Events
 4. Word of mouth
 5. Social media
 - ii. Examples of healing resources:
 1. Pop-up drop-in hours for behavioral health support in the neighborhood impacted
 2. Social services, including housing, employment, and other city services
 3. Behavioral health providers by neighborhood, including culturally-specific support
 4. Crisis and emergency resources

PROPOSED Protocol for Trauma Response to Gun Violence



Blue = existing, Orange = proposed

Next Steps

- Funding would need to be secured to implement proposed protocol
- Once funding is secured, proposed protocol would be implemented in phases, with initial implementation as a pilot in high impact areas
- Throughout phases, regular engagement with Community Providers, Coordinator(s), and City representatives would occur.



Thank You



San Francisco Health Network
Behavioral Health Services