

The UCSF Health logo is displayed in white text on a teal background. The letters 'UCSF' are in a bold, sans-serif font, and 'Health' is in a regular, sans-serif font.

UCSF Health

UCSF Psychiatric Emergency Services

June 28, 2022

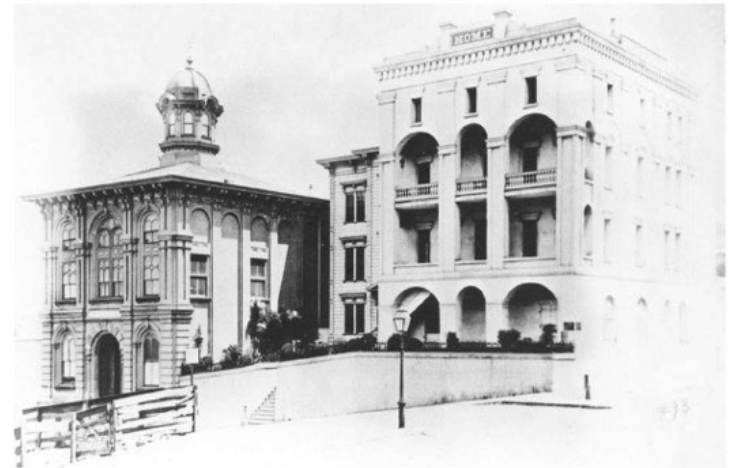
Dr. Maria Raven, Chief of Emergency Medicine

Ms. Parveen Bourne, RN, Executive Director of Clinical Operations –
Behavioral Health Services

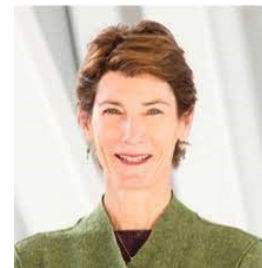


UCSF's 150-year Partnership with the City

- SF General and Toland Medical School co-located on Telegraph Hill in 1860's.
- Today all ZSFG physicians are UCSF faculty
- Regular collaboration between UCSF Psychiatry and SFDPH Behavioral Health
- SFDPH Director Dr. Grant Colfax is former UCSF faculty
- ZSFG Exec. Director Dr. Susan Ehrlich graduated from UCSF School of Medicine



Left Toland Medical School, Right County Hospital



Dr. Susan Ehrlich



Dr. Grant Colfax

UCSF Psychiatric Care

UCSF Medical Center

Parnassus Heights



Langley Porter Psychiatric Hospital

Parnassus Heights



Zuckerberg San Francisco General Hospital



UCSF Psychiatry Beds Are Growing

New Hospital at Parnassus Heights

- Total Emergency Department Rooms: 43 → 71
- Behavioral Health Treatment Rooms: 4 → 8



Langley Porter Psychiatric Hospital and Clinics

- 22 inpatient beds
- 436 inpatient visits / year
- Demolition begins fall 2023



UCSF Mt. Zion Hospital

- Adding 8 inpatient beds for total of 30
- Opens May 2023



UCSF Pritzker Psychiatry Building

- Outpatient clinics opened June 2022
- Located in Dogpatch
- 56,678 visits / year



UCSF Behavioral Health Patients

Q1 2022

485 behavioral health patients in the E.D.

- 5150 Hold
- Emergency Department Hold
- Average length of stay: **25.7 hours.**

■ 221 (45.5%) admitted or transferred

- Co-existing medical issues (e.g. an overdose that requires monitoring)
- ED length of stay is too long (72 hours or more) and there is nowhere else we can send them.
- Average length of stay if admitted: **14 days**

■ 264 (54.5%): Discharged from E.D.



Behavioral Health Staffing

Emergency Department Staffing

- 1 nurse / 4 patients
- 1 security/ every 4 patients on 5150 hold
- Part time psychiatric nurse practitioner
- Dedicated psychiatric social worker



Inpatient Staffing

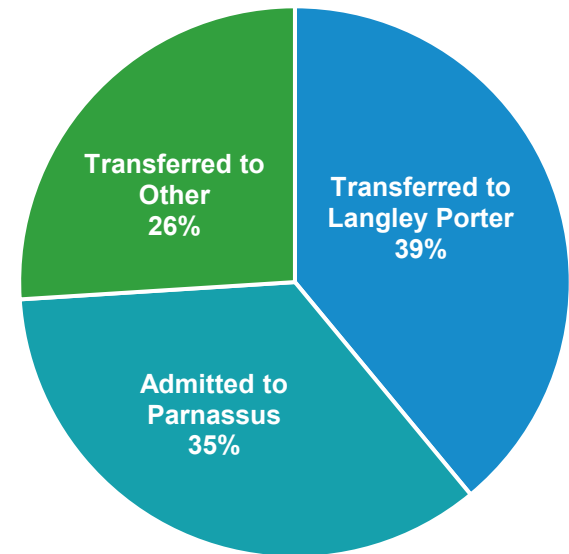
- 1 nurse / 6 patients



Placement in Long-term Treatment

221 E.D patients required inpatient admission in Q1

- 86 (39%) transferred to UCSF Langley Porter
- 77 (35%) admitted to Parnassus
 - nowhere else to place them
 - no one else would accept them
 - co-occurring medical conditions
- 58 (26%) transferred to other inpatient facilities.



Patients are difficult to place if they have:

- Medi-Cal or are uninsured, because fewer placement options.
- Serious behavioral issues or serious medical problems.

UCSF is Working To...

- Better align discharge options with SFDPH
- Increase E.D. psychiatry staffing
 - Treat patients earlier
 - Discharge more individuals





Questions?

Amiee Alden, MPP

Director, Local & State Government Relations

amiee.alden@ucsf.edu

(510) 207-0628

UCSF

