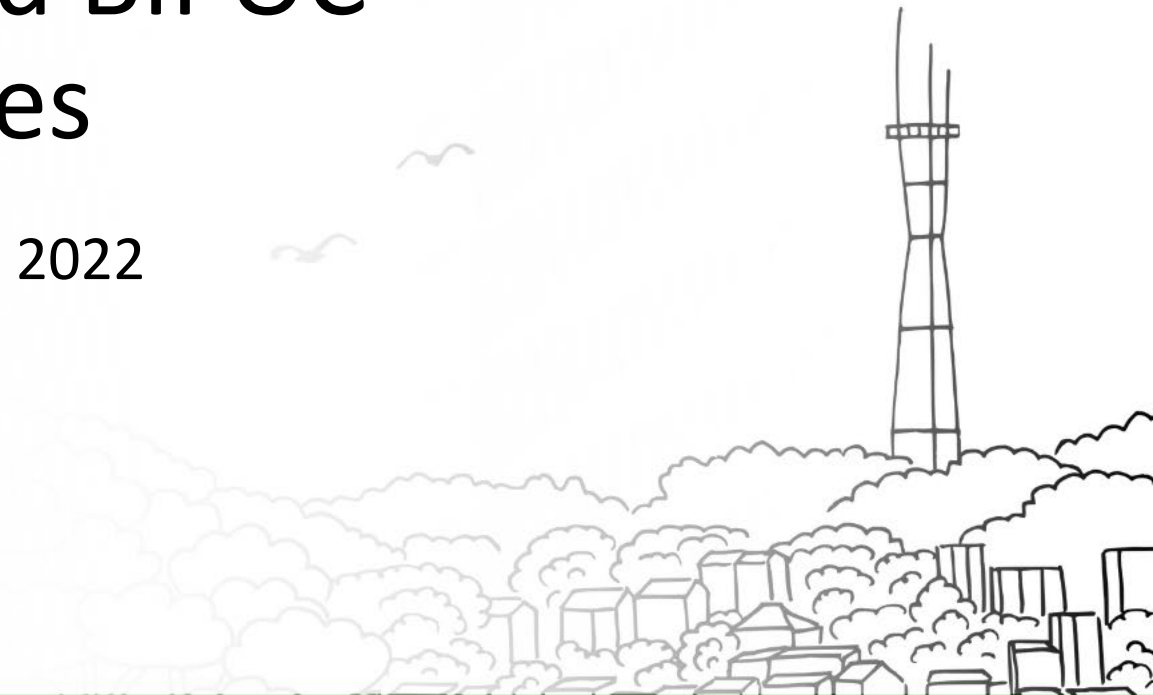




DEPARTMENT OF
HOMELESSNESS AND
SUPPORTIVE HOUSING

Housing Access for Unhoused BIPOC Pregnant Persons and Families

Land Use and Transportation Committee | April 11, 2022



Families Experiencing Homelessness

- 2019 PIT Count found **208 families** with children at a **single point in time**.
- Approx. **1,200** Coordinated Entry **Family Assessments** conducted annually.

Family-Specific Resources by Type	Family Capacity
Shelter	214
Transitional Housing	50
Housing	1,111 (<i>428 units under contract</i>)
Total Capacity: 1,375 Families	

Coordinated Entry: Pregnant People & Families with Children Under 6

All Family Coordinated Entry Assessments

- 90% BIPOC Households
- 68% pregnant households or households with children under 6

All Pregnant Households or Households with Children Under 6

- 90% BIPOC Households
 - *86% pregnant households are BIPOC*
 - *91% households with children under 6 are BIPOC*

Pregnant People: Coordinated Entry

Family Coordinated Entry

89% of pregnant people assessed are BIPOC

~215 BIPOC pregnant people assessed annually

Adult Coordinated Entry

72% of pregnant people assessed are BIPOC

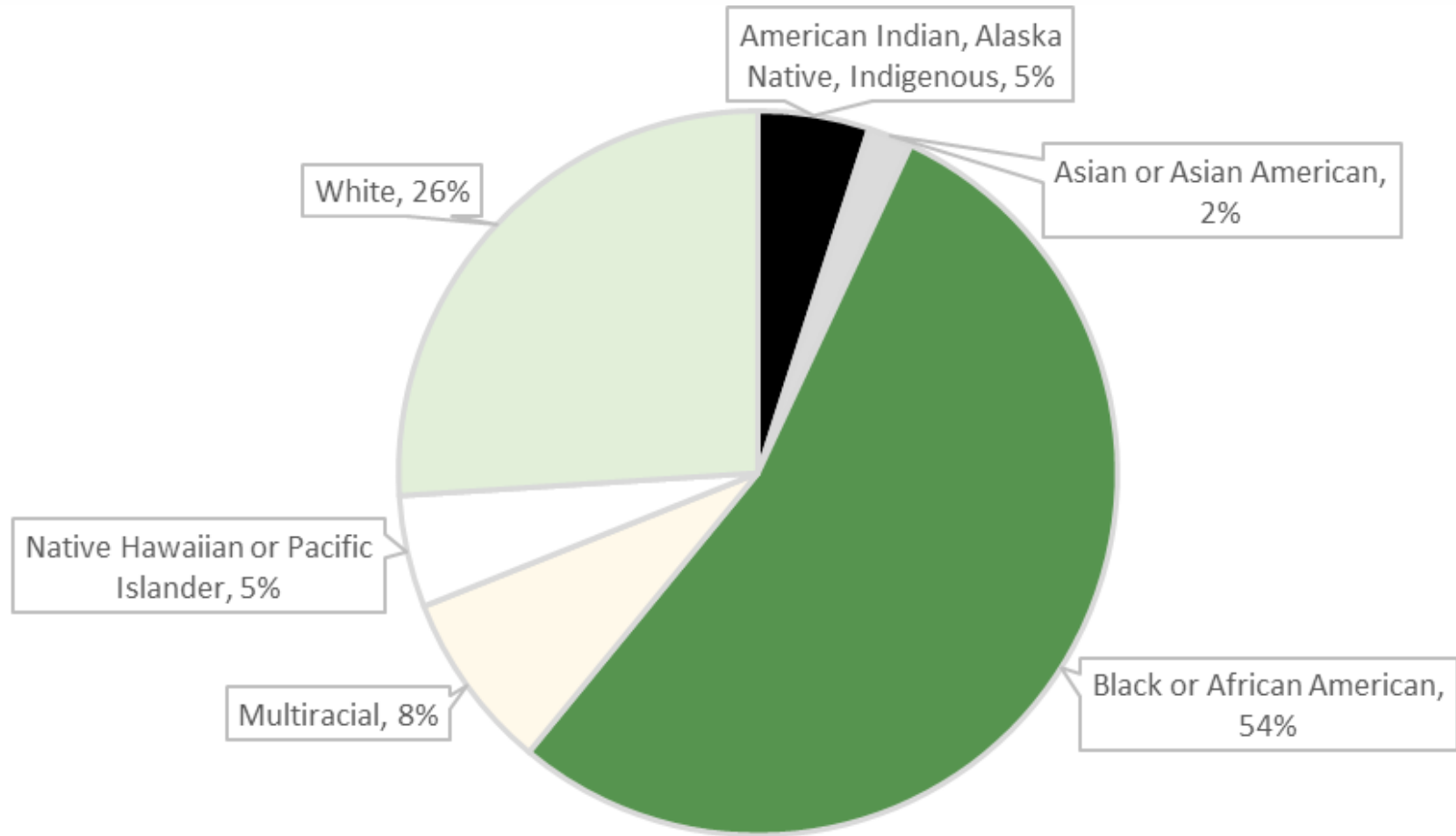
~29 pregnant BIPOC people assessed annually

Pregnant People: Ethnicity

30% Pregnant Households are Latinx/Hispanic

- 19% of Pregnant Adult Households
- 31% of Pregnant Family Households

Pregnant People: Race



n = 772 (Jan. 2019 – April 8, 2022)

Households with Children Under 6

Family Coordinated Entry Assessments

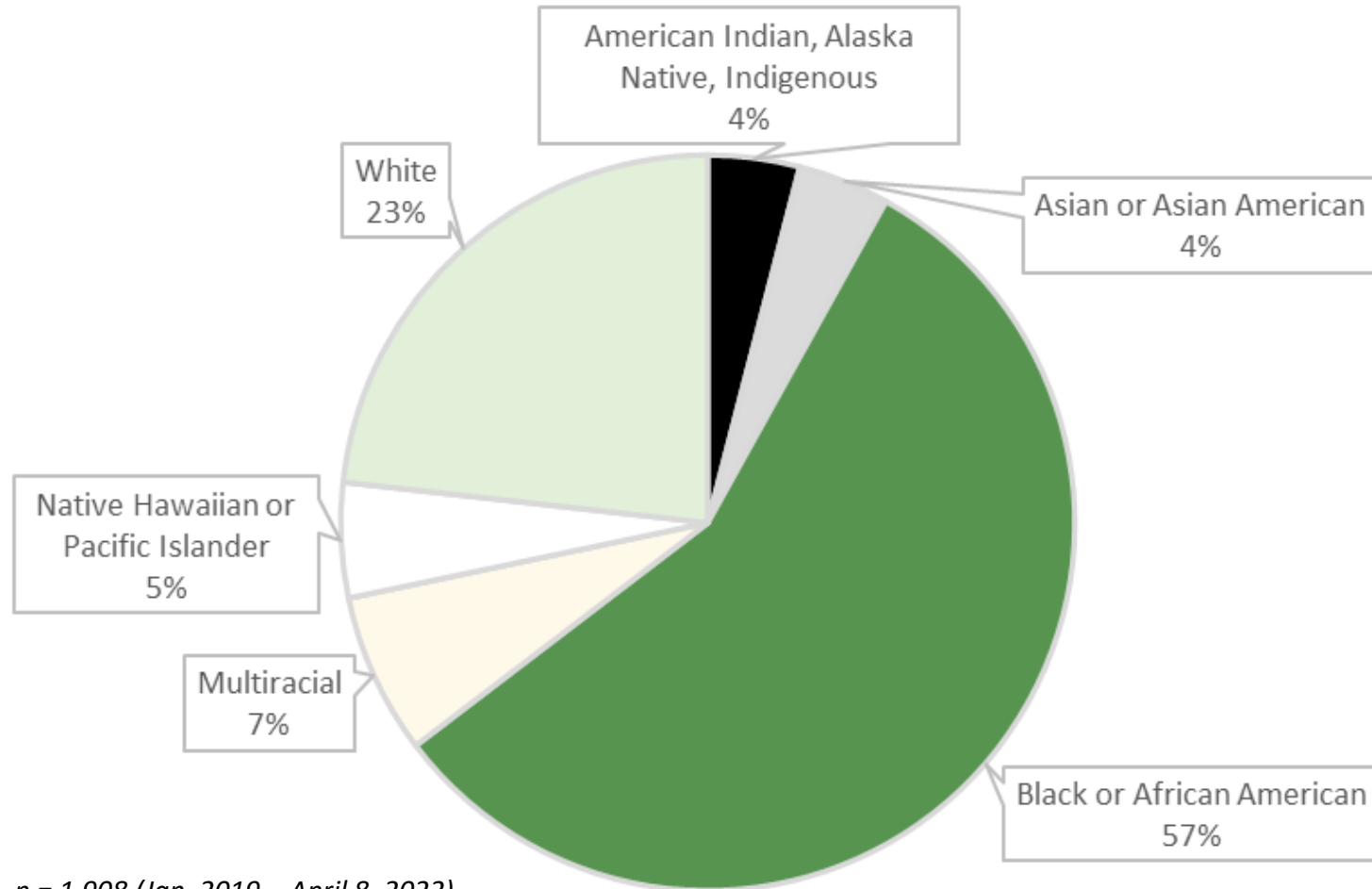
- Approx. 650 BIPOC households with children under 6 are assessed annually.
- BIPOC households are 91% of households with children under 6.
- 20% of BIPOC households with children under 6 also have a pregnant head of household.

Households with Children Under 6: Ethnicity

37%

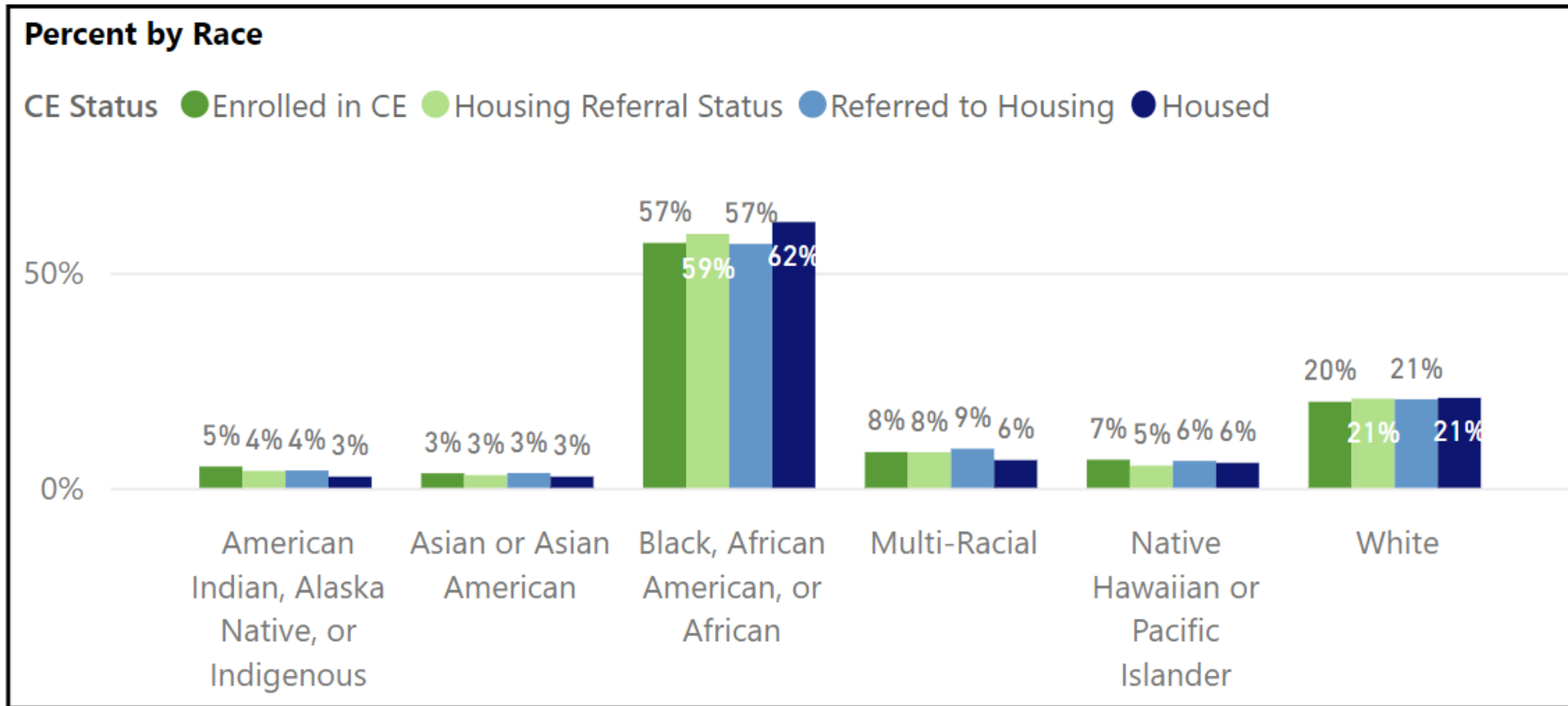
households assessed
with children under 6
are **Latinx** or **Hispanic**.

Households with Children Under 6: Race



n = 1,908 (Jan. 2019 – April 8, 2022)

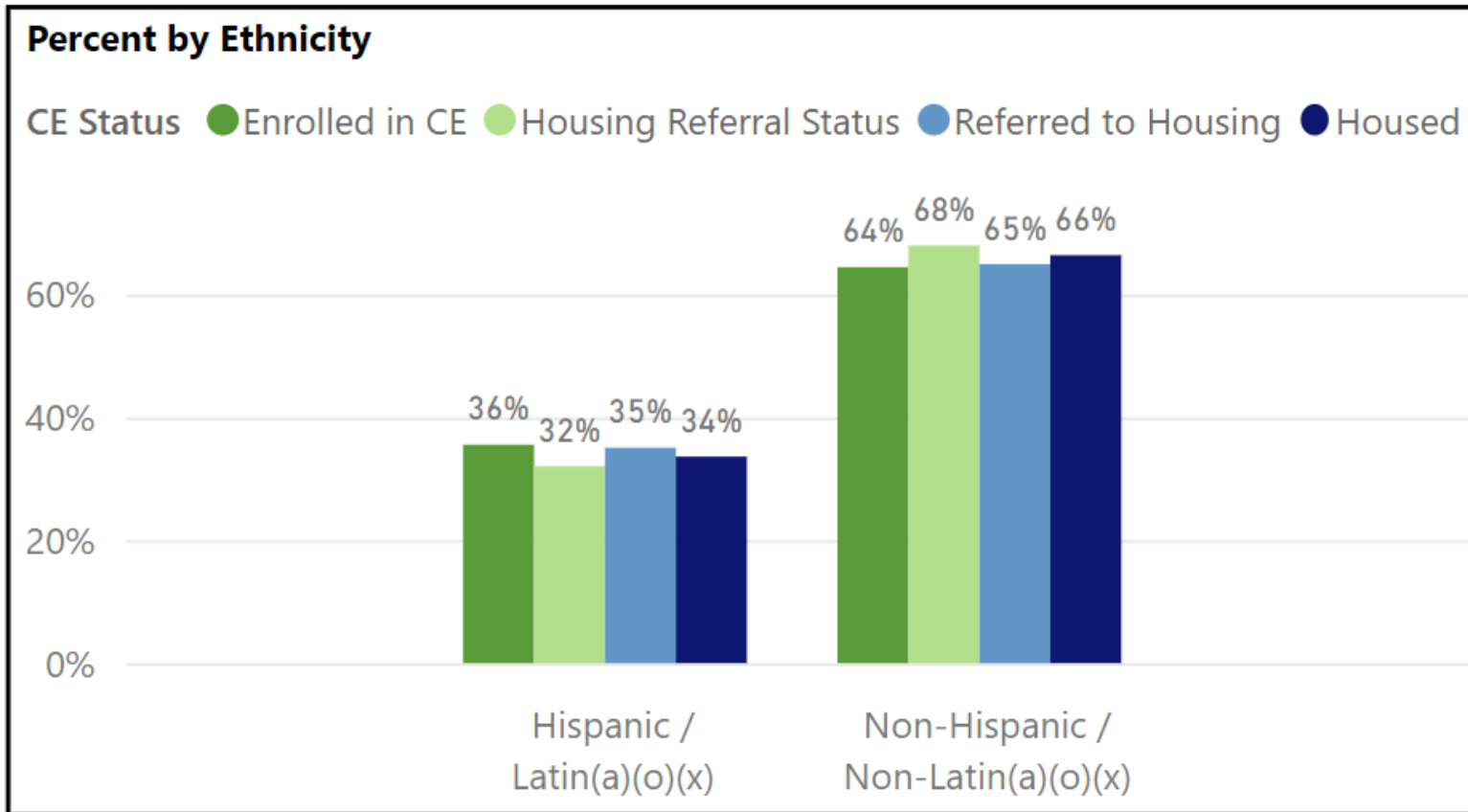
Coordinated Entry & Housing - Families



Data from January 1, 2021 to March 31, 2022.

Race is incomplete for 17% of clients (2% Data Not Collected; 16% Doesn't Know / Refused)

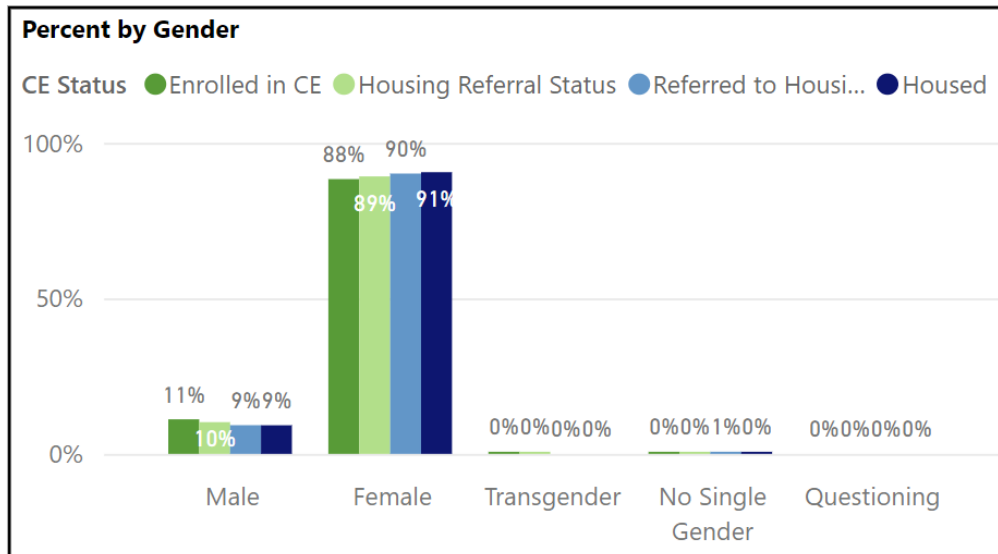
Coordinated Entry & Housing - Families



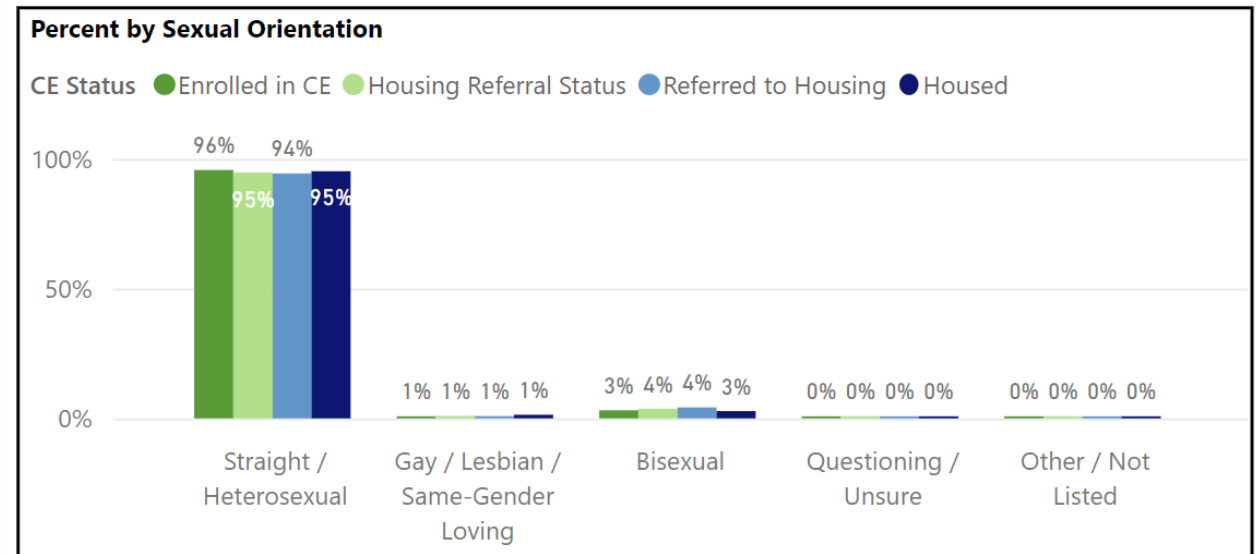
Data from January 1, 2021 to March 31, 2022.

Ethnicity is incomplete for 1% of clients (1% Data Not Collected; 1% Doesn't Know / Refused)

Coordinated Entry & Housing - Families



Gender is incomplete for 0% of clients (0% Data Not Collected; 0% Doesn't Know / Refused)



Sexual Orientation is incomplete for 4% of clients (3% Data Not Collected; 1% Refused)

Data from January 1, 2021 to March 31, 2022.



DEPARTMENT OF
HOMELESSNESS AND
SUPPORTIVE HOUSING

HSH Resources

Family Shelter

Emergency Shelter Site Name (Non-Congregate Unless Specified)	COVID-Informed Household Capacity
Hamilton Family Emergency Center <i>*Congregate model</i>	23
Hamilton Family Residence	25
Harbor House	28
St. Joseph's Family Center	9
Residential Shelter Program	12
Homeless Prenatal Program Emergency Housing	16
Compass Family Shelter	21
Providence Family Services Center <i>*Includes 15 emergency placements.</i>	50
Buena Vista Horace Mann Stayover Program <i>*For clients with SFUSD children. Congregate model.</i>	30
Total: 214 households	

Family Transitional Housing and Shelter

Transitional Housing Site Name	COVID-Informed Household Capacity
Clara House	13
Jelani House <i>*Focus on pregnant and post-partum people.</i>	17
Hamilton Transitional Housing Program	20
Total: 50 households	

- HSH offers **immediate access to shelter** to any unsheltered pregnant people; proof of pregnancy is not a requirement for entry.
- Pregnant people can access Adult, TAY, or Family systems depending on preference.
- Additional shelter available for survivors of domestic violence/IPV.

Housing: Families & Pregnant People

Type	Current Inventory	Coming Soon
Family Site-Based PSH	486	279
Scattered Site PSH	n/a	149 (Family-Specific Emergency Housing Vouchers)
Family Rapid Rehousing	625	n/a
	Total: 1,111 units	Total: 428 units

- Expansion of family housing with **\$106 million in Prop C funding**
 - **40 units** at 1321 Mission Street
 - **200 units** at 333 12th Street (pending Board of Supervisors approval)

Unsheltered Pregnant People



Pregnant person is encountered on the street or visits a Family, Adult or TAY Access Point for a CE assessment.

Housing Referral Status

CE Assessment

Problem Solving Status

Person offered immediate shelter + Housing Navigator matches person to available housing and supports them to become "document ready"

Offered up to three housing options

Moves into housing

Person is offered shelter resources based on their preference: family, adult, or TAY

Person is offered Problem Solving services: conversations to identify real-time solutions, housing location assistance, reunification/conflict resolution, financial assistance

Sheltered Pregnant People



Pregnant person visits a Family, Adult or TAY Access Point for a CE assessment based on the plan for their healthcare and future.

CE Assessment

Housing Referral Status

Problem Solving Status

Housing Navigator matches person to available housing and supports guest to be "document ready"

Offered up to three housing options

Moves into housing

Person is offered Problem Solving services: conversations to identify real-time solutions, housing location assistance, reunification/conflict resolution, financial assistance.

Coordinated Entry (CE) and Pregnant People

- Pregnant people can **choose** which type of CE to work with: Family CE or Adult/Transitional Age Youth (18-24) CE.
 - **No requirement of medical verification** of pregnancy to start working with Family CE.
 - Clients are advised that adult and youth housing is not designed to serve babies.
 - Pregnant clients may live in adult or TAY shelters while seeking family housing.
 - If a client has different scores across adult, youth, and family housing assessments they can proceed with whichever interventions they're eligible for.
- HSH's **Coordinated Entry Evaluation** process:
 - In February 2022, HSH launched a two-part process to assess and improve the Coordinated Entry System across all populations.
 - Includes community and client input through focus groups, interviews, surveys and listening sessions.



DEPARTMENT OF
HOMELESSNESS AND
SUPPORTIVE HOUSING

Thank you.

Questions?

Learn: hsh.sfgov.org | Like: [@SanFrancisoHSH](https://www.facebook.com/SanFranciscoHSH) | Follow: [@SF_HSH](https://twitter.com/SF_HSH)