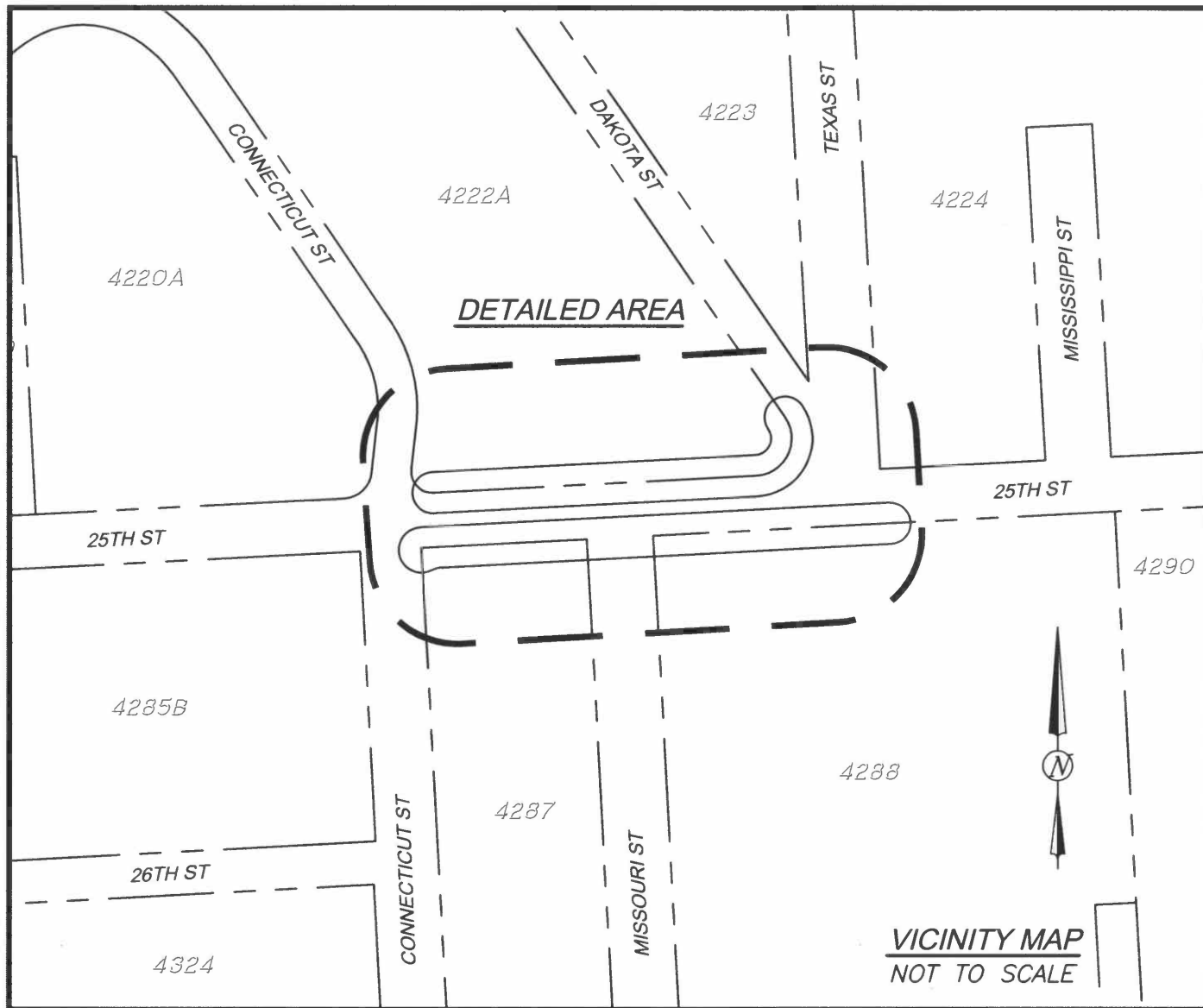
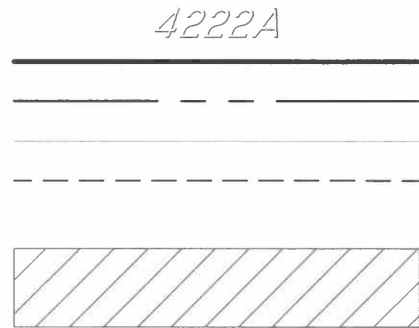


Jun 07, 2022 - 10:58am J:\Survey\Sidewalk Changes\2020\2020_010 - 1101 Connecticut (Potrero Hope)\DWG\AB 4287 LDT 076.dwg



LEGEND



ASSESSORS BLOCK NUMBER
 NEW CURB LINE
 PROPERTY LINE
 EXISTING OFFICIAL CURB TO REMAIN
 EXISTING OFFICIAL CURB TO BE REMOVED

AREA UNDER SFPW JURISDICTION FOR MAINTENANCE,
 SEE SHEET 3 OF 3

REFERENCE(S):

Q-12-13a TITLED "POTRERO LOW RENT HOUSING PROJECT CAL-J-2 FOR HOUSING AUTHORITY OF THE CITY & COUNTY OF SAN FRANCISCO" DATED JULY 10, 1939 ON FILE WITH OFFICE OF THE CITY AND COUNTY SURVEYOR.

OFFICIAL GRADE MAP NO. 309 ON FILE WITH OFFICE OF THE CITY AND COUNTY SURVEYOR.



APPROVED:

William E. Blackwell Jr.
 WILLIAM E. BLACKWELL JR., PLS 8251
 ACTING CITY & COUNTY SURVEYOR

6/7/2022
 DATE

CITY AND COUNTY OF SAN FRANCISCO
SAN FRANCISCO PUBLIC WORKS

OFFICIAL SIDEWALK CHANGES FOR POTRERO HOPE PHASE 1 ALONG 25TH ST, CONNECTICUT ST, AND DAKOTA ST, FRONTING AB 4222A, 4287, AND 4288

FILE: Q-20-1181

SHEET 1 OF 3

SCALE: 1" = 50'

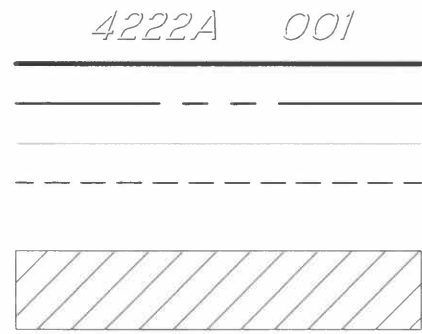
REVISION

REFERENCE(S):

Q-12-13a TITLED "POTRERO LOW RENT HOUSING PROJECT CAL-J-2 FOR HOUSING AUTHORITY OF THE CITY & COUNTY OF SAN FRANCISCO" DATED JULY 10, 1939 ON FILE WITH OFFICE OF THE CITY AND COUNTY SURVEYOR.

OFFICIAL GRADE MAP NO. 309 ON FILE WITH OFFICE OF THE CITY AND COUNTY SURVEYOR.

LEGEND



ASSESSORS BLOCK AND LOT NUMBER

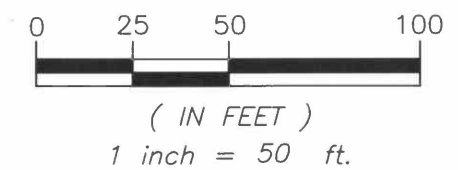
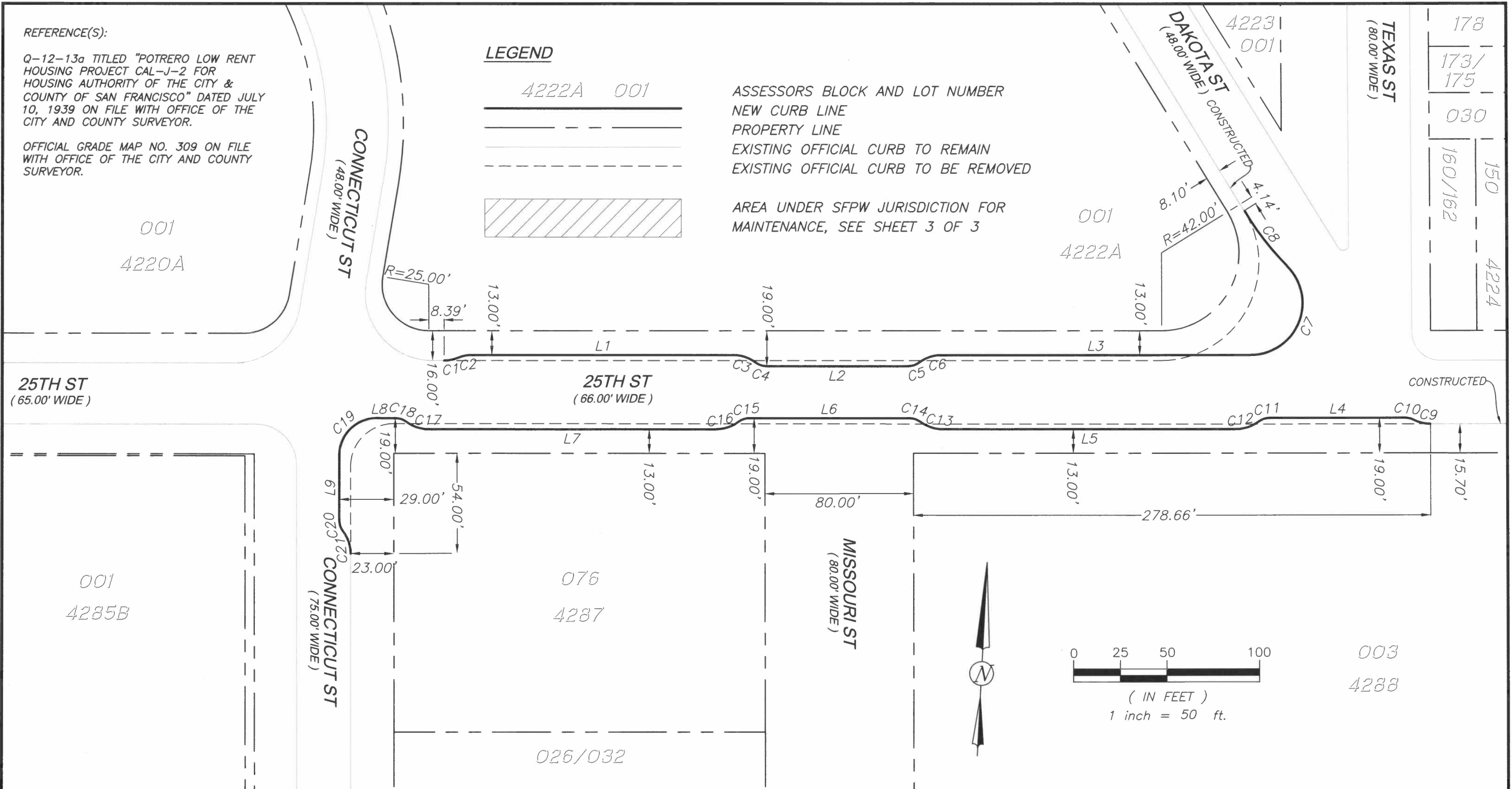
NEW CURB LINE

PROPERTY LINE

EXISTING OFFICIAL CURB TO REMAIN

EXISTING OFFICIAL CURB TO BE REMOVED

AREA UNDER SFPW JURISDICTION FOR MAINTENANCE, SEE SHEET 3 OF 3



APPROVED:

William E. Blackwell Jr.

WILLIAM E. BLACKWELL JR., PLS 8251
ACTING CITY & COUNTY SURVEYOR

4/7/2022
DATE

CITY AND COUNTY OF SAN FRANCISCO
SAN FRANCISCO PUBLIC WORKS

OFFICIAL SIDEWALK CHANGES FOR POTRERO HOPE PHASE 1 ALONG 25TH ST, CONNECTICUT ST, AND DAKOTA ST, FRONTING AB 4222A, 4287, AND 4288

FILE: Q-20-1181	SHEET 2 OF 3	SCALE: 1" = 50'	REVISION
-----------------	--------------	-----------------	----------

Jun 07, 2022 - 10:49am J:\Survey\Sidewalk Changes\2020\2020_010 - 1101 Connecticut (Potrero HOPE)\DWG\AB 4287 LOT 076.dwg

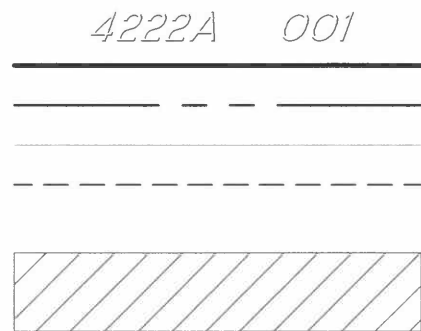
Jun 07, 2022 - 10:48am J:\Survey\Sidewalk Changes\2020\2020_010 - 1101 Connecticut (Potrero Hope)\DWG\AB 4287 LOT 076.dwg

CURVE TABLE			
CURVE #	LENGTH	RADIUS	DELTA
C1	7.78	20.00	22°17'53"
C2	7.64	20.00	21°53'46"
C3	12.87	20.00	36°52'12"
C4	6.44	10.00	36°52'12"
C5	6.44	10.00	36°52'12"
C6	12.87	20.00	36°52'12"
C7	66.11	28.00	135°16'45"
C8	37.68	149.73	14°25'04"
C9	9.53	20.00	27°17'41"
C10	4.75	10.00	27°12'33"
C11	6.44	10.00	36°52'12"

CURVE TABLE			
CURVE #	LENGTH	RADIUS	DELTA
C12	12.87	20.00	36°52'12"
C13	12.87	20.00	36°52'13"
C14	6.44	10.00	36°52'13"
C15	6.44	10.00	36°52'12"
C16	12.87	20.00	36°52'12"
C17	12.87	20.00	36°52'12"
C18	6.44	10.00	36°52'12"
C19	31.42	20.00	90°00'10"
C20	6.44	10.00	36°52'30"
C21	12.87	20.00	36°52'12"

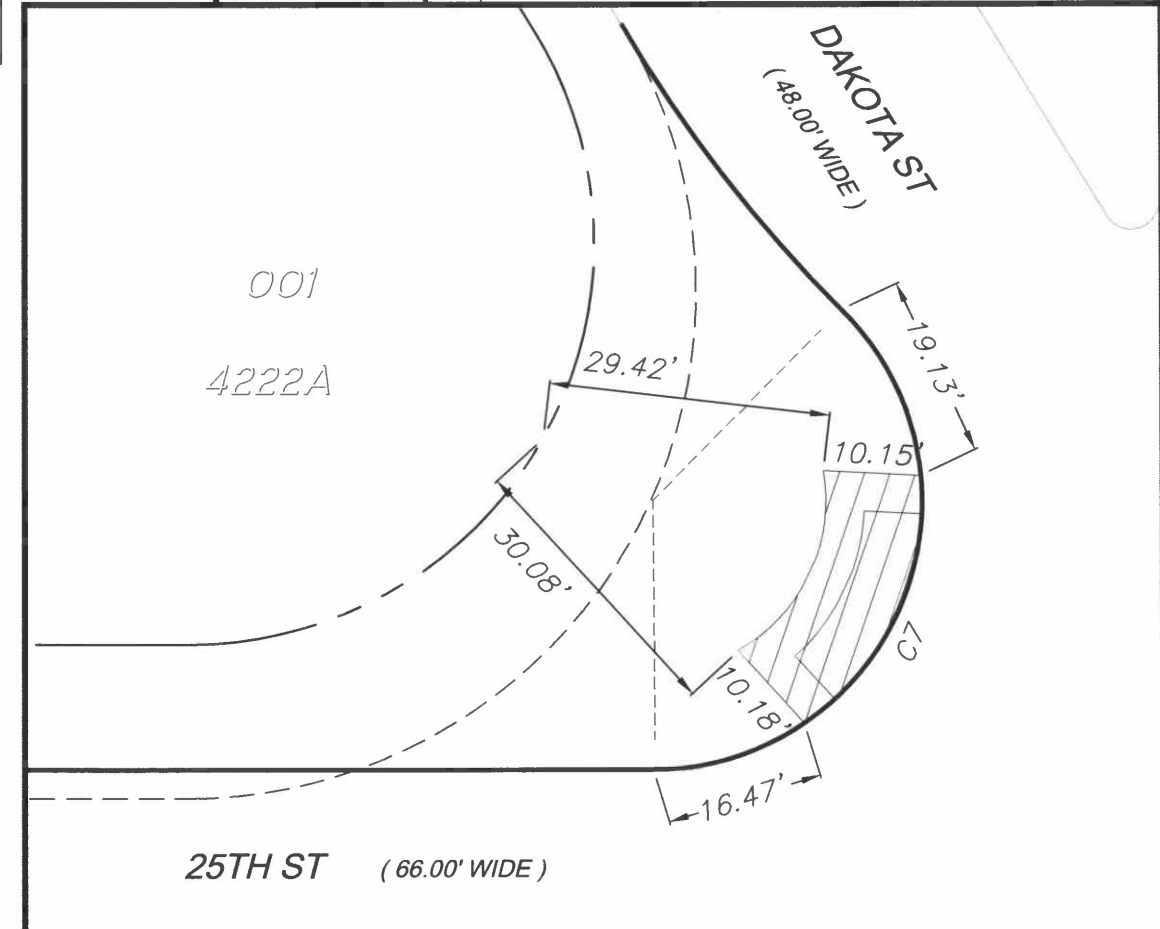
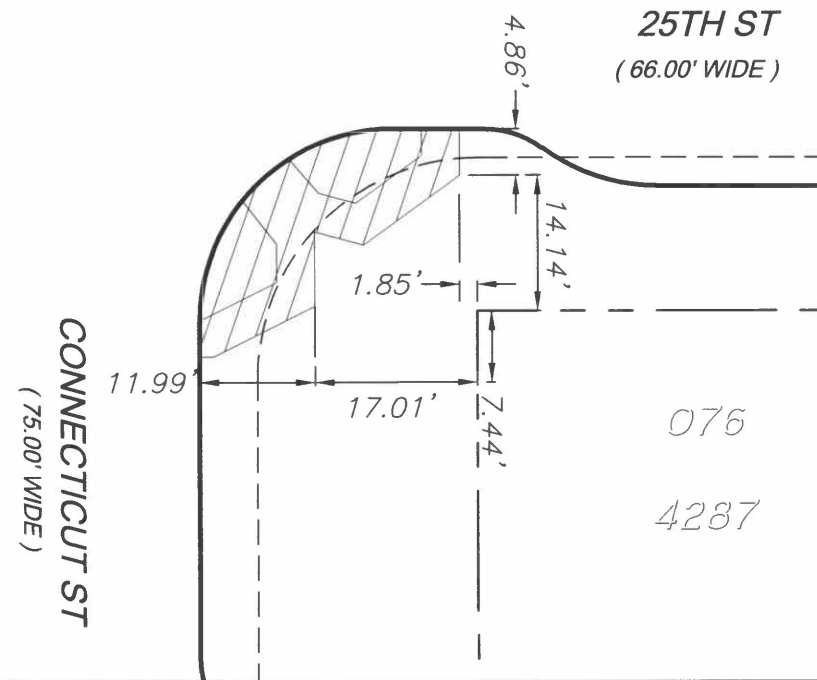
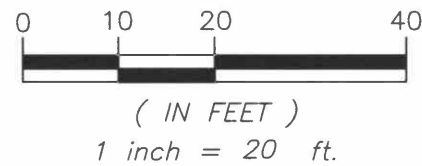
LINE TABLE		
LINE #	LENGTH	BEARING
L1	140.82	N86°59'52"E
L2	76.00	N86°59'52"E
L3	166.60	S86°59'52"W
L4	73.00	S86°59'52"W
L5	158.11	S86°59'52"W
L6	86.04	N86°59'52"E
L7	154.98	S86°59'52"W
L8	9.86	N86°55'22"E
L9	35.00	S3°05'12"E

LEGEND



ASSESSORS BLOCK AND LOT NUMBER
 NEW CURB LINE
 PROPERTY LINE
 EXISTING OFFICIAL CURB TO REMAIN
 EXISTING OFFICIAL CURB TO BE REMOVED

AREA UNDER SFPW JURISDICTION FOR MAINTENANCE



APPROVED:

William E. Blackwell Jr.

WILLIAM E. BLACKWELL JR., PLS 8251
 ACTING CITY & COUNTY SURVEYOR

6/7/2022

DATE

CITY AND COUNTY OF SAN FRANCISCO
 SAN FRANCISCO PUBLIC WORKS

OFFICIAL SIDEWALK CHANGES FOR POTRERO HOPE PHASE 1 ALONG 25TH ST, CONNECTICUT ST, AND DAKOTA ST, FRONTING AB 4222A, 4287, AND 4288

FILE: Q-20-1181	SHEET 3 OF 3	SCALE: 1" = 20'	REVISION
-----------------	--------------	-----------------	----------