

The UCSF Health logo is displayed in white text on a teal background. The letters 'UCSF' are in a bold, sans-serif font, and 'Health' is in a regular, sans-serif font.

UCSF Health

# UCSF Psychiatric Emergency Services

June 28, 2022

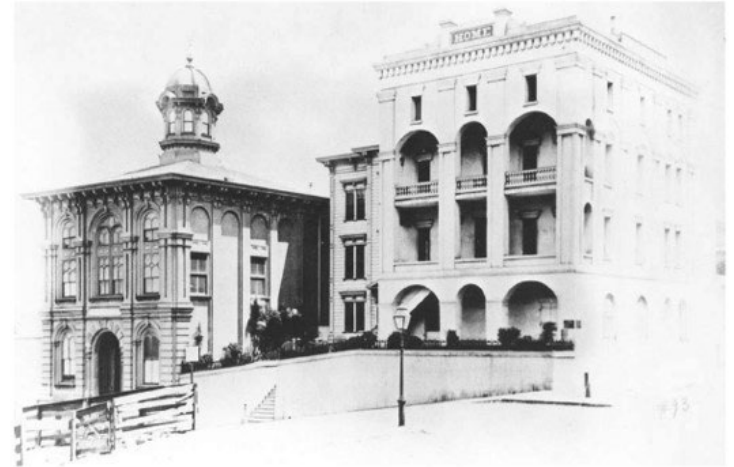
**Dr. Maria Raven**, Chief of Emergency Medicine

**Ms. Parveen Bourne**, RN, Executive Director of Clinical Operations –  
Behavioral Health Services

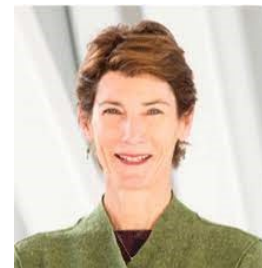


# UCSF's 150-year Partnership with the City

- SF General and Toland Medical School co-located on Telegraph Hill in 1860's.
- Today all ZSFG physicians are UCSF faculty
- Regular collaboration between UCSF Psychiatry and SFDPH Behavioral Health
- SFDPH Director Dr. Grant Colfax is former UCSF faculty
- ZSFG Exec. Director Dr. Susan Ehrlich graduated from UCSF School of Medicine



Left Toland Medical School, Right County Hospital



Dr. Susan Ehrlich



Dr. Grant Colfax

# UCSF Psychiatric Care

**UCSF Medical Center**  
Parnassus Heights



**Langley Porter  
Psychiatric Hospital**  
Parnassus Heights



**Zuckerberg San Francisco  
General Hospital**



# UCSF Psychiatry Beds Are Growing

## New Hospital at Parnassus Heights

- Total Emergency Department Rooms: 43 → 71
- Behavioral Health Treatment Rooms: 4 → 8



## Langley Porter Psychiatric Hospital and Clinics

- 22 inpatient beds
- 436 inpatient visits / year
- Demolition begins fall 2023



## UCSF Mt. Zion Hospital

- Adding 8 inpatient beds for total of 30
- Opens May 2023



## UCSF Pritzker Psychiatry Building

- Outpatient clinics opened June 2022
- Located in Dogpatch
- 56,678 visits / year



# UCSF Behavioral Health Patients

Q1 2022

## 485 behavioral health patients in the E.D.

- 5150 Hold
- Emergency Department Hold
- Average length of stay: **25.7 hours.**

## ■ 221 (45.5%) admitted or transferred

- Co-existing medical issues (e.g. an overdose that requires monitoring)
- ED length of stay is too long (72 hours or more) and there is nowhere else we can send them.
- Average length of stay if admitted: **14 days**

## ■ 264 (54.5%): Discharged from E.D.



# Behavioral Health Staffing

## Emergency Department Staffing

- 1 nurse / 4 patients
- 1 security/ every 4 patients on 5150 hold
- Part time psychiatric nurse practitioner
- Dedicated psychiatric social worker



## Inpatient Staffing

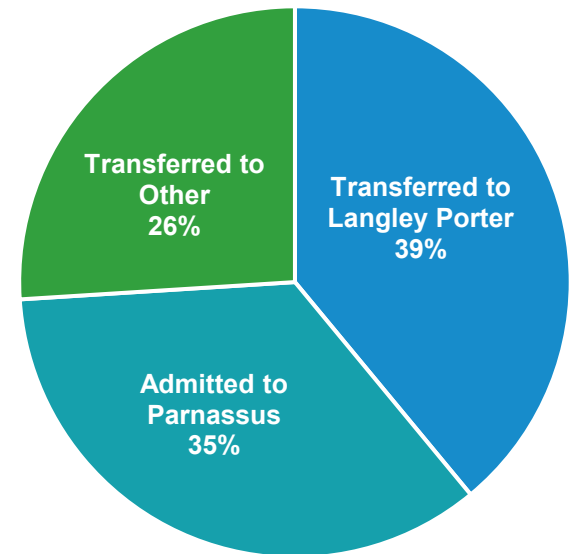
- 1 nurse / 6 patients



# Placement in Long-term Treatment

## 221 E.D patients required inpatient admission in Q1

- 86 (39%) transferred to UCSF Langley Porter
- 77 (35%) admitted to Parnassus
  - nowhere else to place them
  - no one else would accept them
  - co-occurring medical conditions
- 58 (26%) transferred to other inpatient facilities.



## Patients are difficult to place if they have:

- Medi-Cal or are uninsured, because fewer placement options.
- Serious behavioral issues or serious medical problems.

# UCSF is Working To...

- Better align discharge options with SFDPH
- Increase E.D. psychiatry staffing
  - Treat patients earlier
  - Discharge more individuals







# Questions?

**Amiee Alden, MPP**

Director, Local & State Government Relations

[amiee.alden@ucsf.edu](mailto:amiee.alden@ucsf.edu)

(510) 207-0628

**UCSF**

