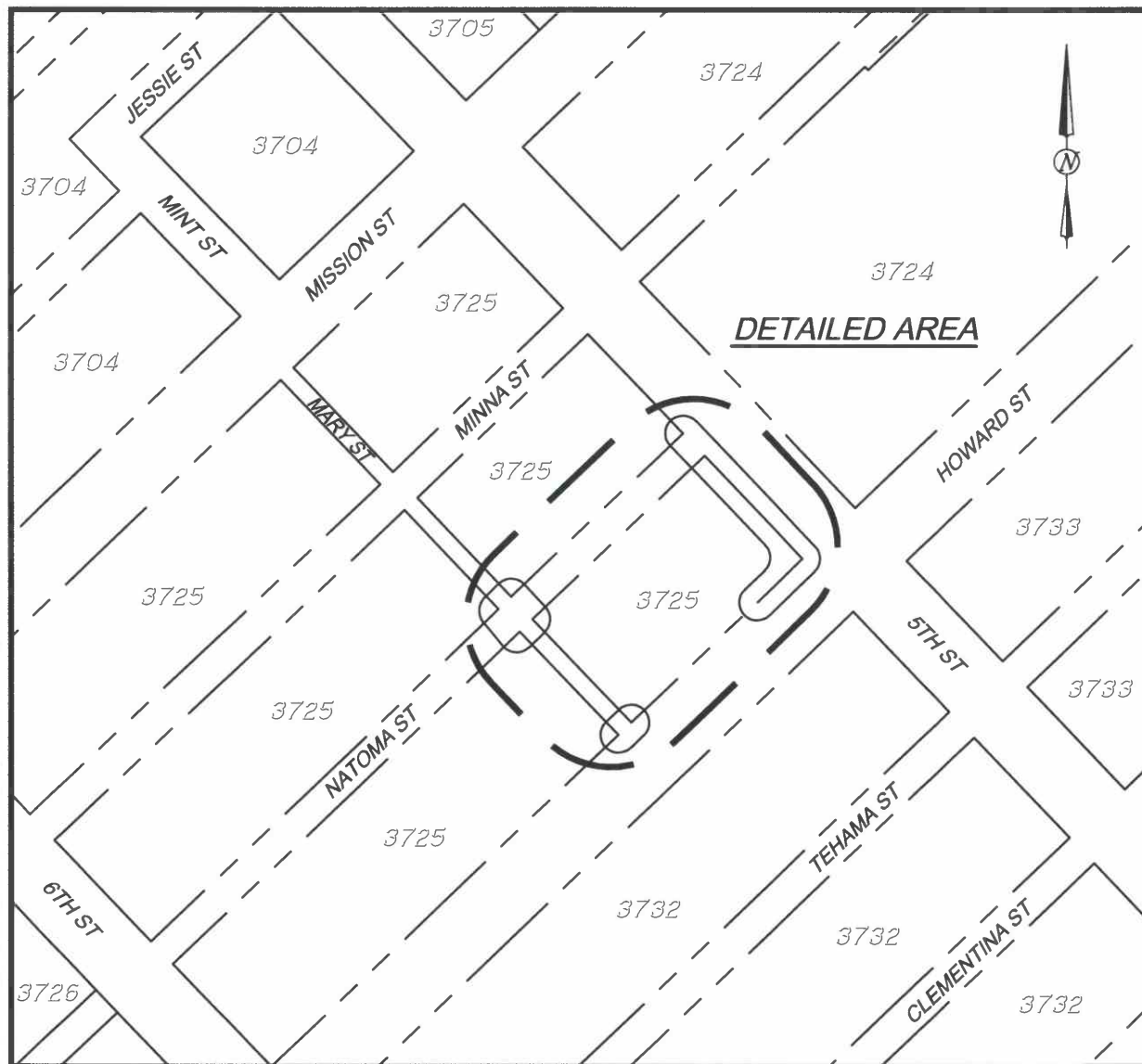
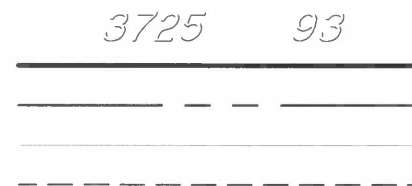


REFERENCE: 314\_GM,  
BOOK 138CM Pages  
27-29



VICINITY MAP  
NOT TO SCALE

LEGEND



ASSESSORS BLOCK AND LOT NUMBER  
NEW CURB LINE  
PROPERTY LINE  
EXISTING OFFICIAL CURB TO REMAIN  
EXISTING OFFICIAL CURB TO BE REMOVED

LINE TABLE	
LINE #	LENGTH
L1	25.72
L2	3.00
L3	5.78
L4	3.22
L5	105.01
L6	20.41
L7	21.00
L8	8.96

CURVE TABLE			
CURVE #	LENGTH	RADIUS	DELTA
C1	15.71	10.00	90°00'00"
C2	15.71	10.00	90°00'00"
C3	23.56	15.00	90°00'00"
C4	6.43	10.00	36°52'11"
C5	12.87	20.00	36°52'11"
C6	15.71	10.00	90°00'00"
C7	15.71	10.00	90°00'00"
C8	10.21	6.50	90°00'00"
C9	10.21	6.50	90°00'00"
C10	15.71	10.00	90°00'00"
C11	10.21	6.50	90°00'00"



APPROVED:

*James M. Ryan*

CITY & COUNTY SURVEYOR

1-20-2021

DATE

**CITY AND COUNTY OF SAN FRANCISCO**  
SAN FRANCISCO PUBLIC WORKS

OFFICIAL SIDEWALK CHANGE ALONG THE SOUTHWESTERLY PORTION OF 5TH STREET AT THE INTERSECTION OF HOWARD STREET, FRONTING AB 3725 LOTS 007, 128 THRU 131

FILE: Q-20-1141

SHEET 1 OF 3

SCALE: 1" = 20'

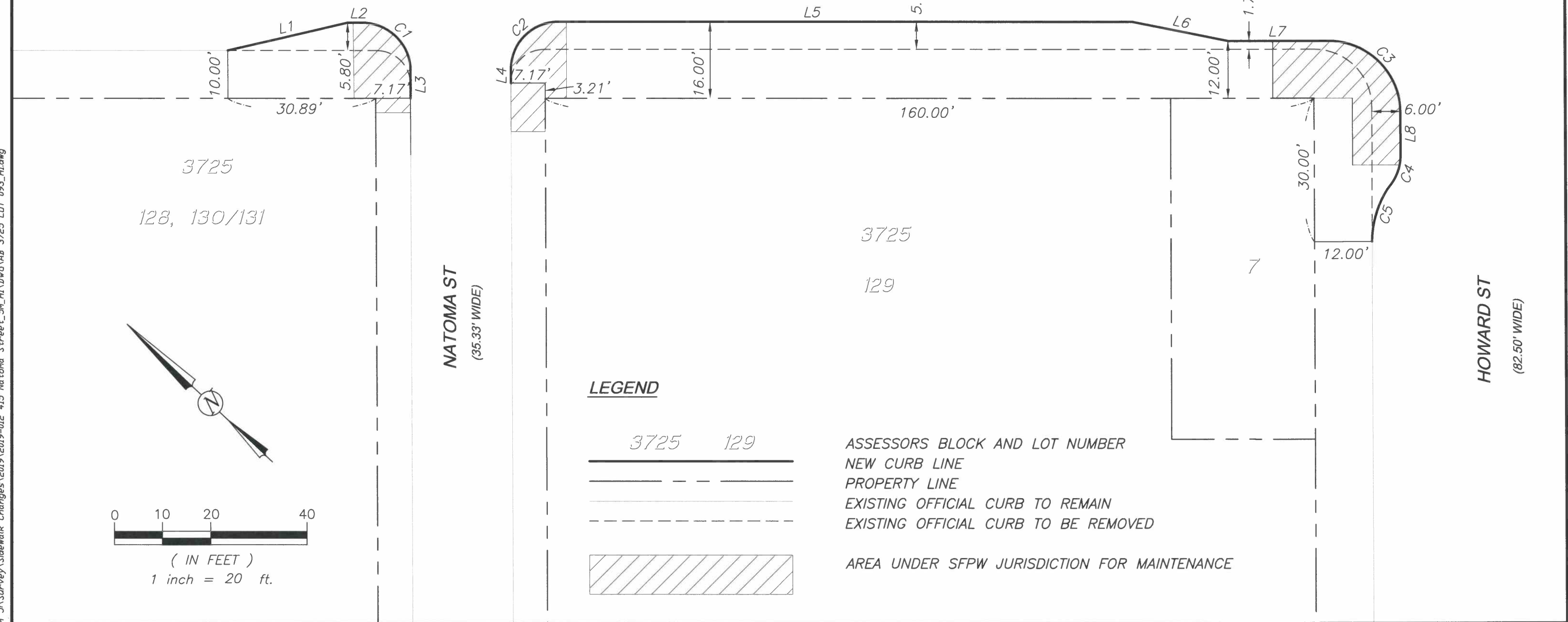
REVISION

Jan 20, 2021 - 12:54pm J:\Survey\Sidewalk Changes\2019\2019-012 415 Natoma Street\_SM\_HI\DWG\AB 3725 LDT 093\_H1.dwg

REFERENCE: 314\_GM,  
BOOK 138CM Pages  
27-29

5TH ST  
(82.50' WIDE)

J:\Survey\Sidewalk Changes\2019\2019-012 415 Natoma Street\_5M\_HI\DWG\AB 3725 LDT 093\_HI.dwg



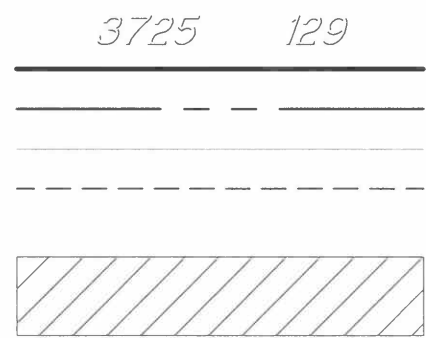
3725  
128, 130/131

3725  
129

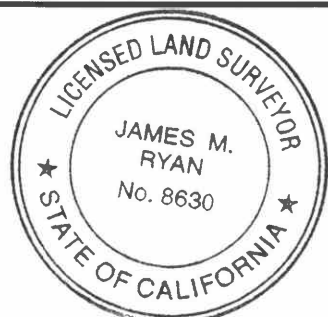
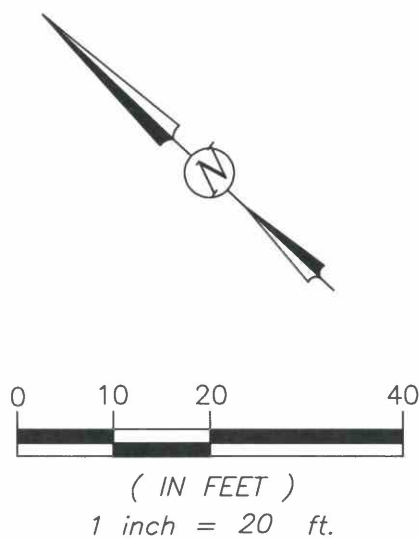
NATOMA ST  
(35.33' WIDE)

HOWARD ST  
(82.50' WIDE)

**LEGEND**



ASSESSORS BLOCK AND LOT NUMBER  
NEW CURB LINE  
PROPERTY LINE  
EXISTING OFFICIAL CURB TO REMAIN  
EXISTING OFFICIAL CURB TO BE REMOVED  
AREA UNDER SFPW JURISDICTION FOR MAINTENANCE



APPROVED:

*James M. Ryan*

CITY & COUNTY SURVEYOR

1-20-2021

DATE

**CITY AND COUNTY OF SAN FRANCISCO**  
SAN FRANCISCO PUBLIC WORKS

OFFICIAL SIDEWALK CHANGE ALONG THE SOUTHWESTERLY PORTION OF 5TH STREET AT THE INTERSECTION OF HOWARD STREET, FRONTING AB 3725 LOTS 007, 128 THRU 131

FILE: Q-20-1141







SHEET 2 OF 3

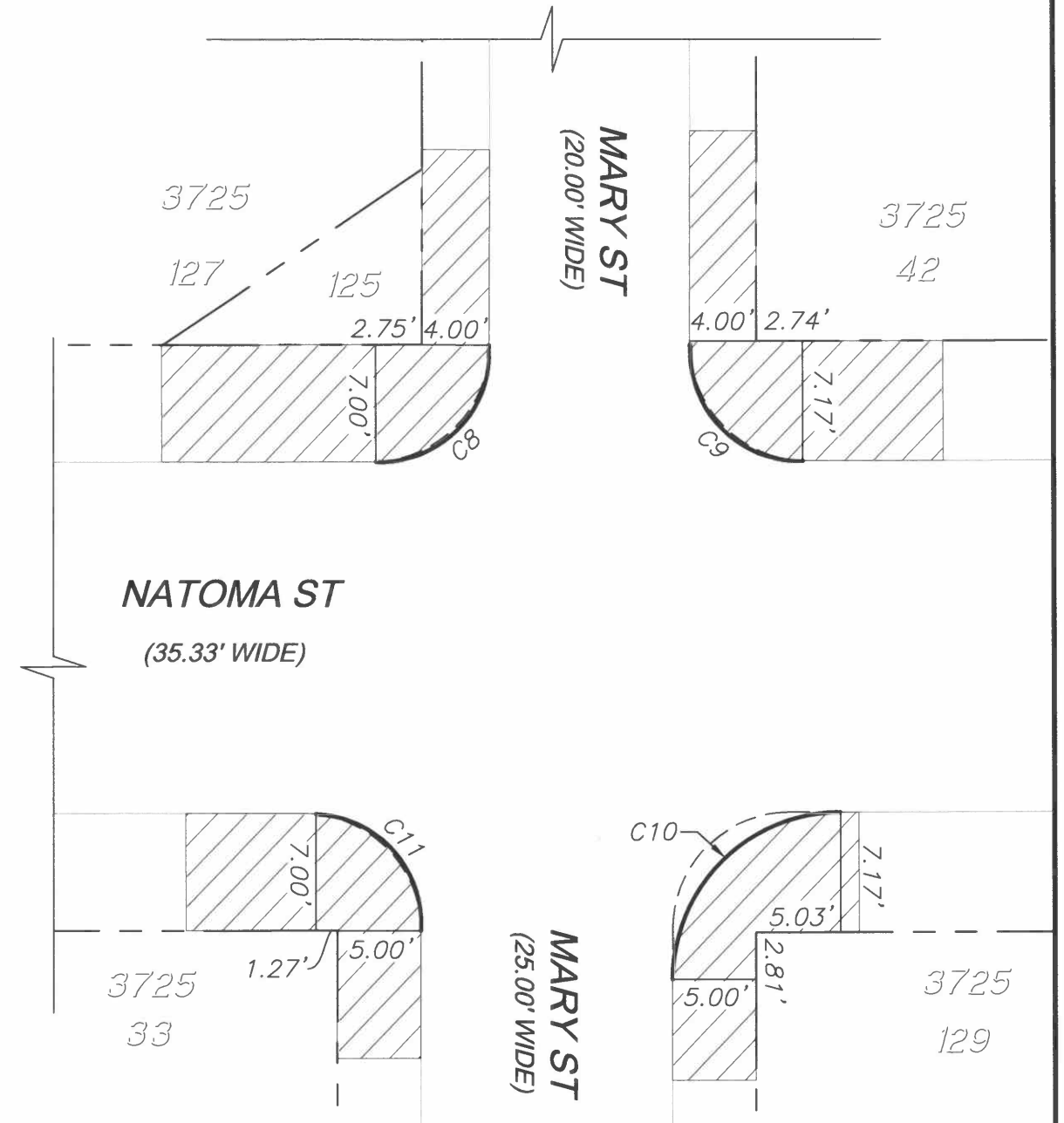
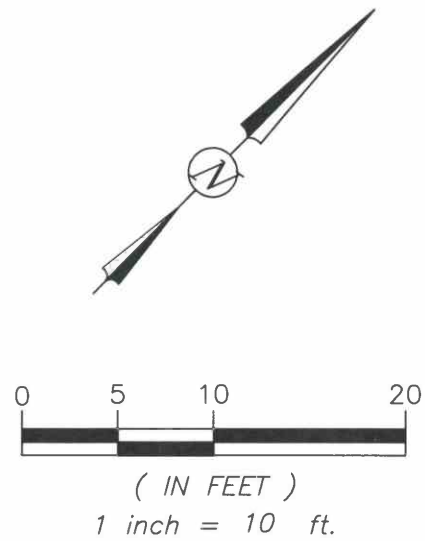
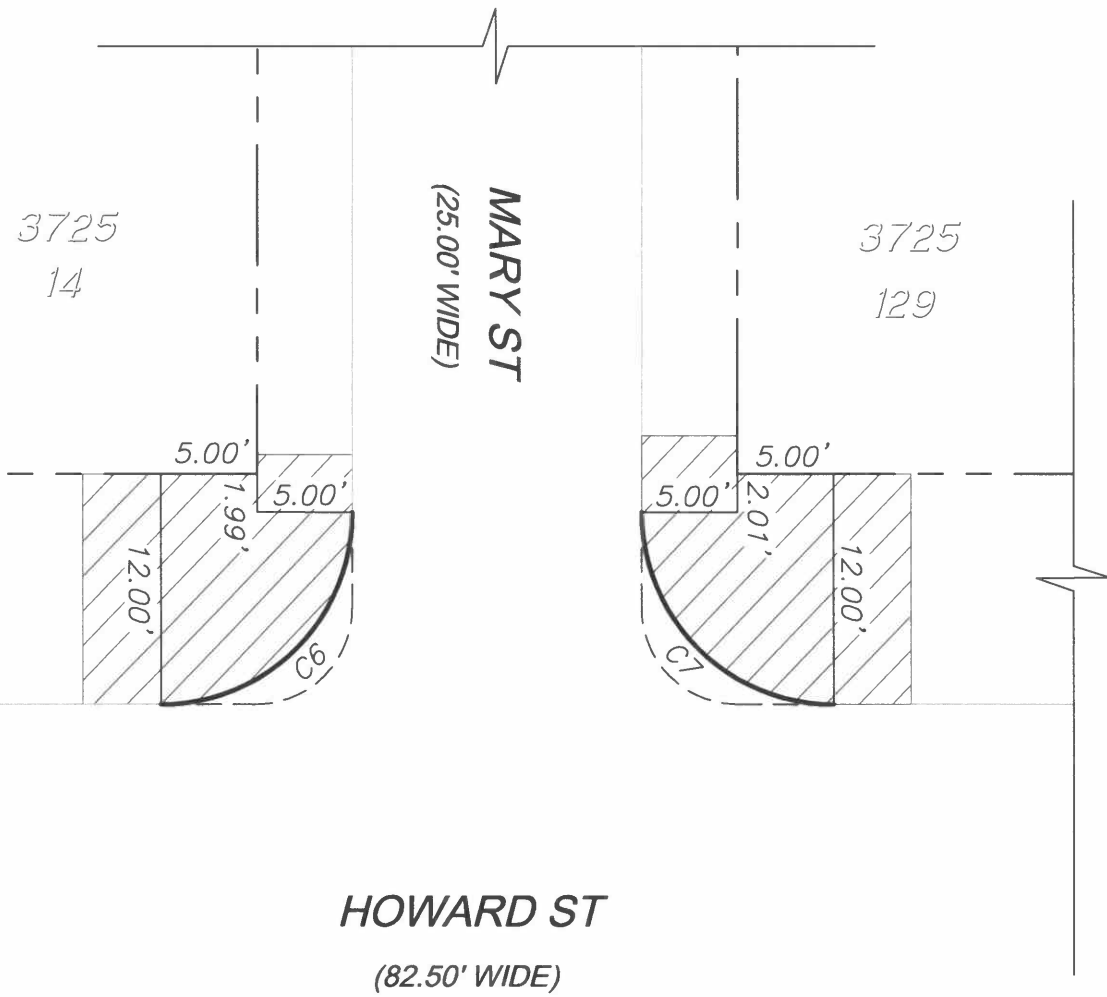
SCALE: 1"=20'

REVISION

**LEGEND**

REFERENCE: 314\_GM,  
138CM Pages 27-29

-  ASSESSORS BLOCK AND LOT NUMBER
-  NEW CURB LINE
-  PROPERTY LINE
-  EXISTING OFFICIAL CURB TO REMAIN
-  EXISTING OFFICIAL CURB TO BE REMOVED
-  AREA UNDER SFPW JURISDICTION FOR MAINTENANCE



APPROVED:

*James M. Ryan*

CITY & COUNTY SURVEYOR

1-20-2021

DATE

**CITY AND COUNTY OF SAN FRANCISCO**  
**SAN FRANCISCO PUBLIC WORKS**

OFFICIAL SIDEWALK CHANGE ALONG THE SOUTHWESTERLY PORTION OF 5TH STREET AT THE INTERSECTION OF HOWARD STREET, FRONTING AB 3725 LOTS 007, 128 THRU 131

FILE: Q-20-1141

SHEET 3 OF 3

SCALE: 1" = 10'

REVISION

Jan 20, 2021 - 12:55pm J:\Survey\Sidewalk Changes\2019\2019-012 415 Natoma Street\_5M\_HI\DWG\AB 3725 LDT 092\_H1.dwg