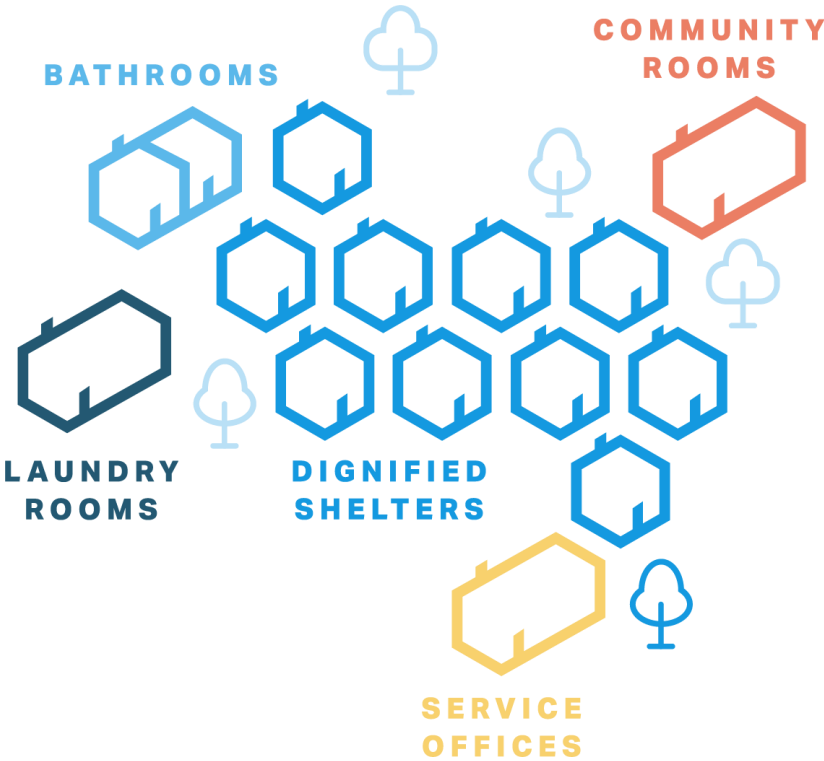




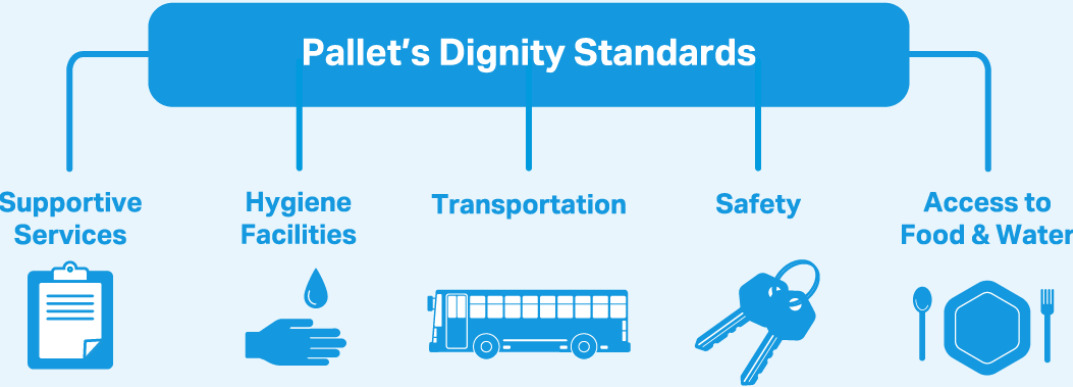




VILLAGE MODEL



INHERENT AND ABSOLUTE DIGNITY





VILLAGE STATS

4000+

SHELTERS BUILT

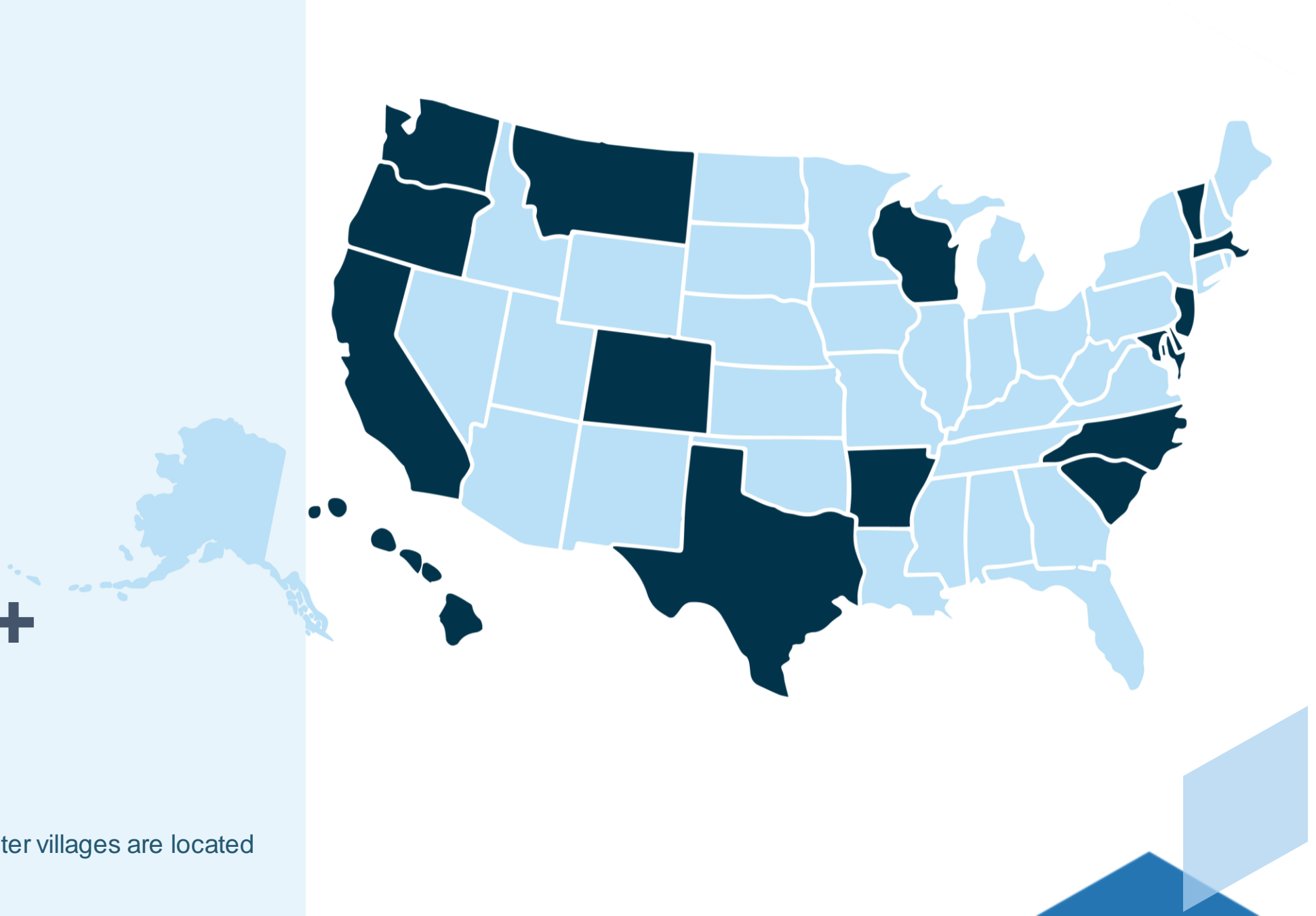
115+

VILLAGES BUILT

21 / 85 +

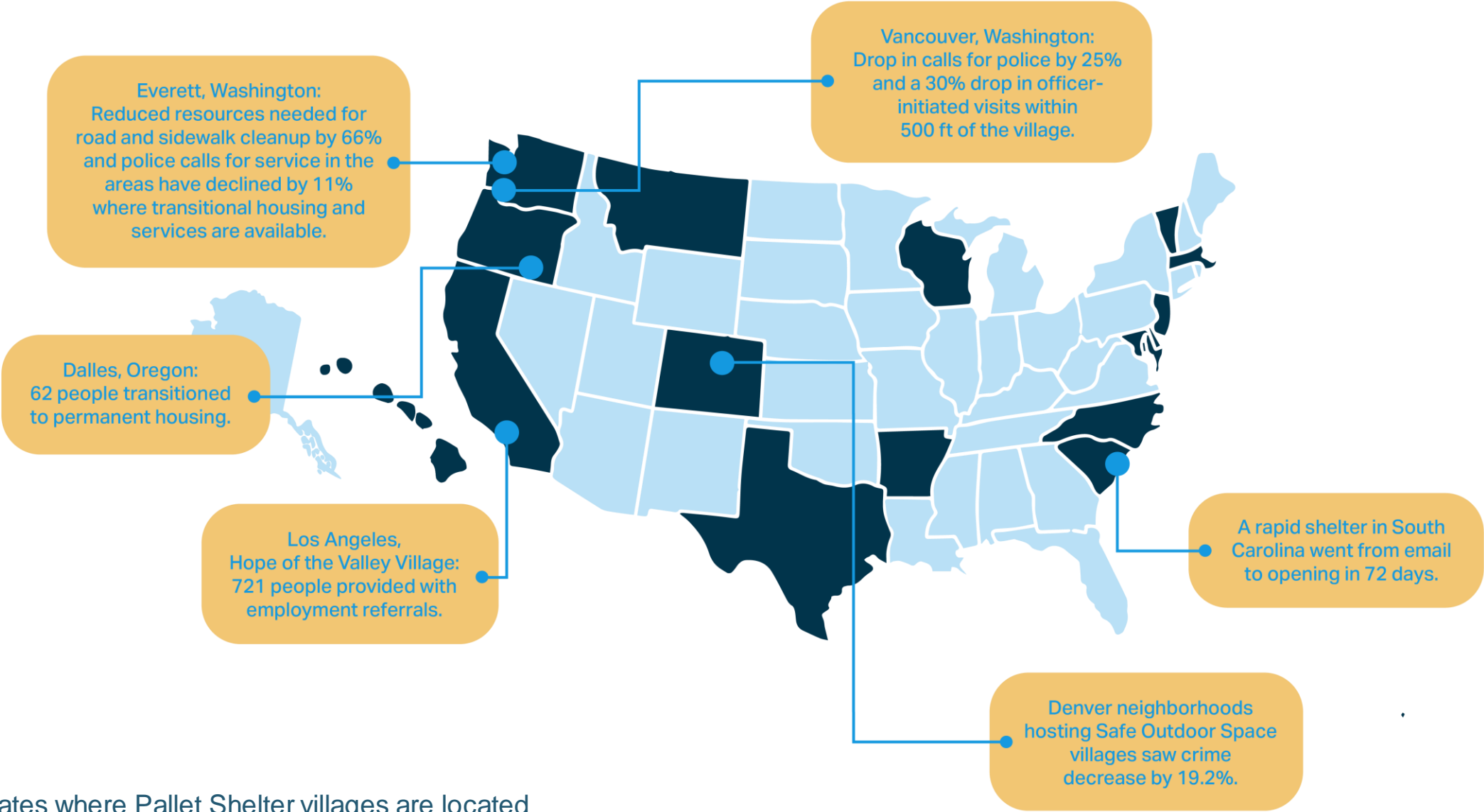
STATES CITIES

■ States where Pallet Shelter villages are located



SLIDE 6: MAP/STATS
OPTION 2 - HIDE OTHER VERSIONS

VILLAGE STATS



SONOMA COUNTY, CA

Featured Project

SIZE:

60 Shelters

POPULATION SERVED:

Local unhoused neighbors

FUNDING:

County Emergency Funds

IMPACT DATA POINTS:

- Assembled in 10 days
- Pet friendly
- Shuttle service



I can't believe that we were able to basically complete an entire tiny community over the course of two weeks. People are happy to be there."

LYNDA HOPKINS, SONOMA COUNTY
BOARD OF SUPERVISORS



Baldwin Park, CA

Featured Project

SIZE:

25 shelters

POPULATION SERVED:

Local unhoused neighbors

FUNDING:

San Gabriel Valley Regional
Housing Trust

Highlights:

- Built less than 30 days including permanent infrastructure
- Includes, shelter, offices, laundry, hygiene units, dog run, outdoor communal space, security office
- All in cost for construction was \$530,000, less than the cost to construct 1 single family unit in LA County\
- Partnered with DPW to keep site costs down



Tiny homes provide the safety and privacy that is lacking in more traditional congregate shelters while helping residents transition to permanent housing.”

EMMANUEL J. ESTRADA,
Mayor of Baldwin Park



LOS ANGELES, CA

Featured Project

SIZE:

1,317 Beds over 13 sites

POPULATION SERVED:

Local unhoused neighbors

FUNDING:

HHAP, CARES, ARPA, General

IMPACT DATA POINTS:

- Supported 465 people through substance abuse
- 599 people with mental health support
- 721 provided with employment referral



People in the neighborhood see less homeless, less trash, less crime, fewer drug users roaming around,” he added. “I think these villages should spread across the country like Starbucks-be in every community.”

ROWAN VANSLEVE, PRESIDENT OF
HOPE AND MISSION



SAN JOSE, CA

Featured Project

SIZE:

25 Shelters

POPULATION SERVED:

Families of 3-4 with children

FUNDING:

County funds

IMPACT DATA POINTS:

- Assembled in 7 days
- Family site
- 100% solar powered with battery and backup propane generators, saving the county \$600,000 per year



Pallet is truly a social purpose company, driven on every level by its mission to house the unsheltered, and this partnership serves as a testament to their willingness to go above and beyond to solve for the pressing needs of the unhoused in our communities".

DALAN ANGELENO,
SALES AND PARTNERSHIP AT BOXPOWER



A photograph of a row of white and red storage units. The sun is low in the background, creating a bright orange and yellow glow with rays. A blue banner with the word 'QUESTIONS?' is overlaid on the image. In the bottom left corner, there are blue geometric shapes, including a white-outlined diamond.

QUESTIONS?