

STUDENT SUCCESS FUND

SFBO Hearing: Special Joint Meeting
April 27, 2023
4:00pm





OPENING REMARKS

Dr. Maria Su
Executive Director
Department of Children, Youth and Their Families



BUILDING ON A FOUNDATION OF PARTNERSHIP & COMMUNITY ENGAGEMENT

DCYF & SFUSD PARTNERSHIP

Decades of partnership and joint funded initiatives like Wellness & Beacon Community Schools

COMMUNITY SCHOOLS MOVEMENT

Local, Regional and National Effort to coordinate and align partnership to support student centered learning
Sunsetting of SIG

PROP G LEGISLATION & VOTERS

Opportunity to operationalize recommendations that emerged from SF RISE Report and address voters concerns about student achievement and learning.

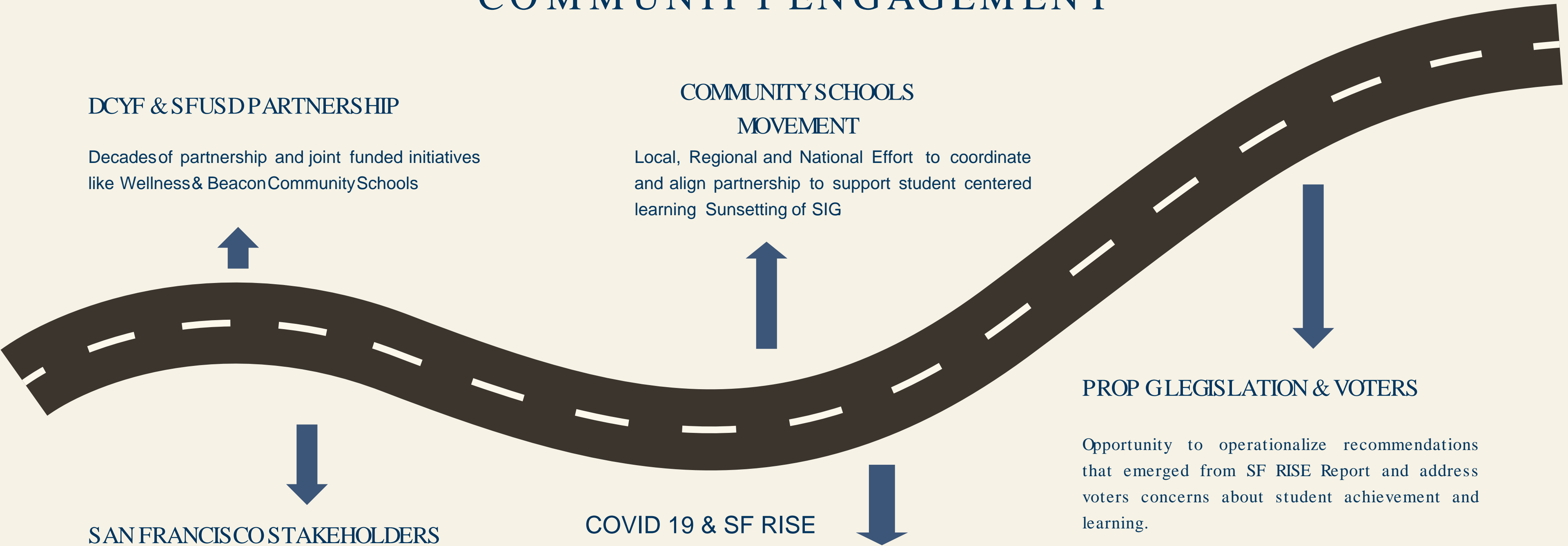
SAN FRANCISCO STAKEHOLDERS

Complex political community engagement

COVID 19 & SF RISE

Unprecedented economic and social impacts of the pandemic led to multiple efforts to engage stakeholders in gathering input on key priority areas.

- systems alignment and capacity development
- academic growth
- social-emotional health and wellness



Implementing on SF RISE Recommendations



System Allighment &
Capacity Development



Academic Growth



Social Emotional
Health & Wellness



OPPORTUNITY TO ADDRESS INEQUITIES
AND SUSTAIN INVESTMENT IN THE
WHOLE CHILD.



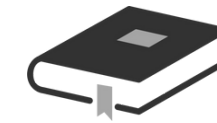
GOALS & GUARDRAILS



Dr. Matt Wayne
Superintendent
SFUSD

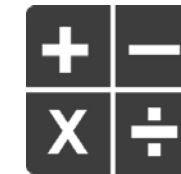
Goals

The community's
mid-term (5-year)
expectations for
what SFUSD
students will know
and be able to do



3rd -grade literacy

The percentage of ALL third -grade students reading at grade level as measured by state tests (SBAC ELA) will increase from 52% proficiency rate in October 2022 to 70% by October 2027.



8th -grade math

The percentage of ALL eighth grade students performing math at grade level as measured by the state tests (SBAC Math) will increase from 42% proficiency rate in October 2022 to 65% by October 2027.



College & career readiness

The percentage of all high school 12th graders who are “college/career ready” as defined by the California Department of Education will increase from 57.5% in June 2020 to 70% by June 2027.

Guardrails

The community's specific non-negotiables that must be honored while implementing the goals





COMPLEX LANDSCAPE FOR FUNDING



Sherrice Dorsey-Smith
DCYF Deputy Director of Program, Planning
and Grants



Mele Lau-Smith
SFUSD Head of Student and Services
Division

SETTING THE CONTEXT FOR CURRENT CHALLENGES IN SCHOOL FUNDING

LANDSCAPE FOR FUNDING COMMUNITY SCHOOLS

Multiple Initiatives

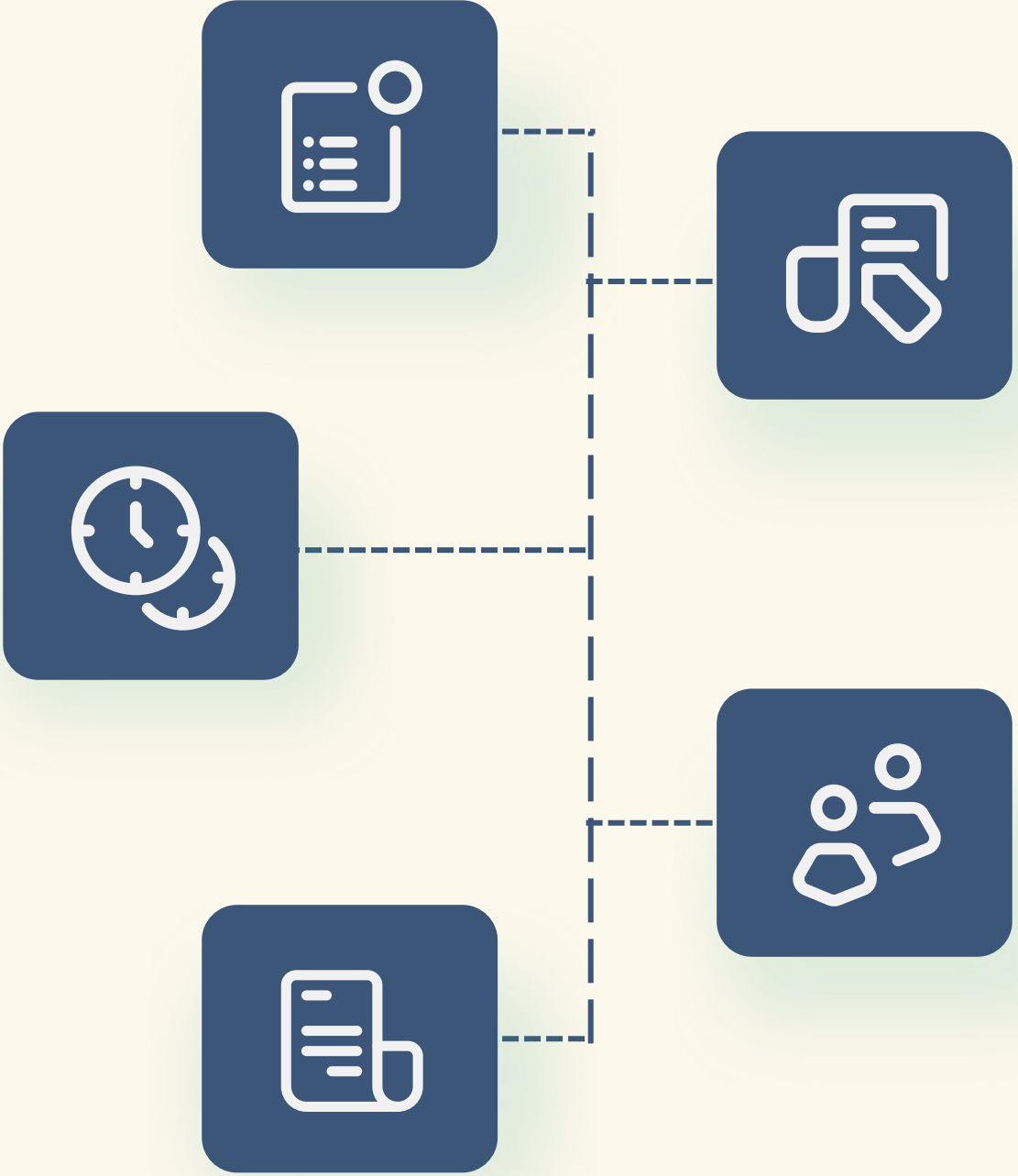
Beacons, ExCEL, Promise Neighborhoods, California Community Schools Partnership Program (CCSPP), Comprehensive Schools Improvement (CSI), Comprehensive Coordinated Early Intervening Services (CCEIS), PITCH Continuum, DCYF Wellness Grant Middle & High Schools

Restricted Grants

Grant restriction and contract terms create challenges for data sharing, coordination, reporting and sustainability.

Deficit based approach to eligibility

Almost all funding is allocated through deficit based approached. Criteria based on free-reduced lunch, test scores, population demographics.



Spectrum of Quality & Readiness

School sites that experience varying levels of school site readiness to implement these programs, hire staff, coordinate efforts.

Workforce Pipeline

School site and programs have reported workforce shortages and positions have remined unfillable with the lack of qualified applicants. Key personnel areas include professional position like Social Worker and Nurses.

THE STUDENT SUCCESS FUND

What is the Student Success Fund?



What CAN the Fund be used for?



People



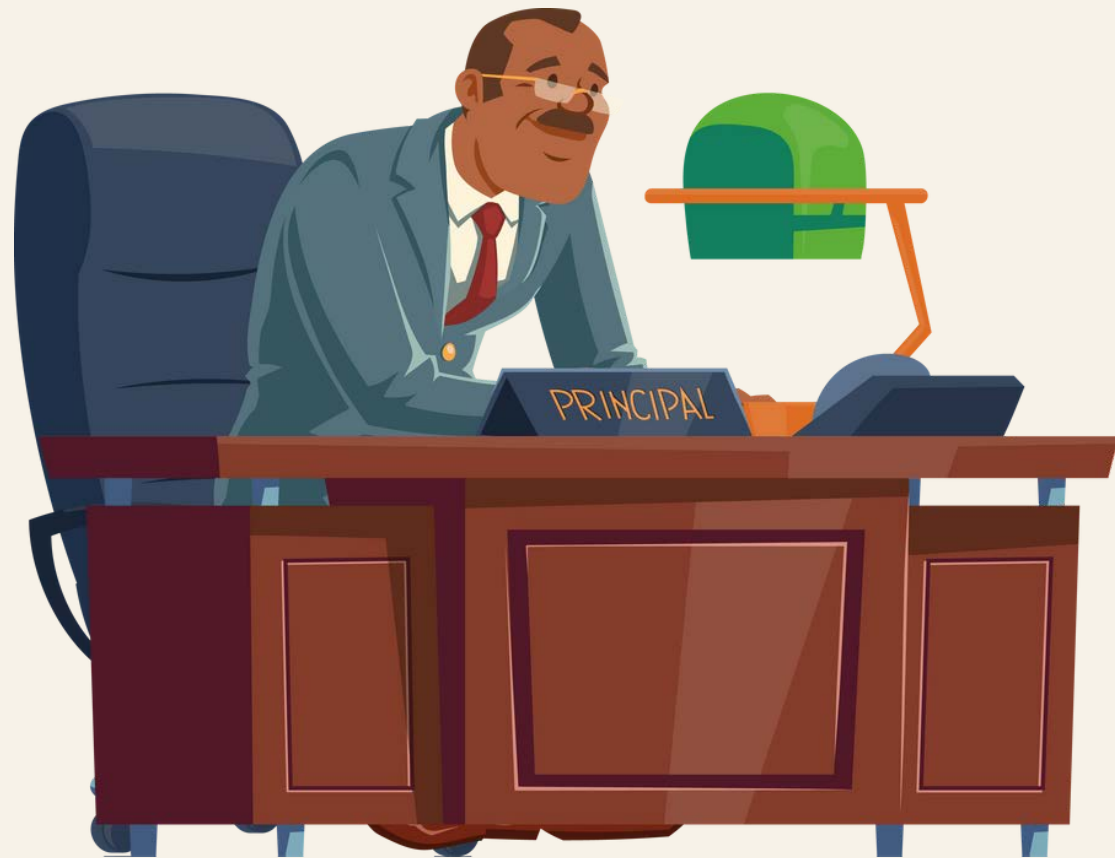
Programs



Partnerships

What CAN'T the Fund be used for?

Core
Staff
(i.e. admin &
instruction)



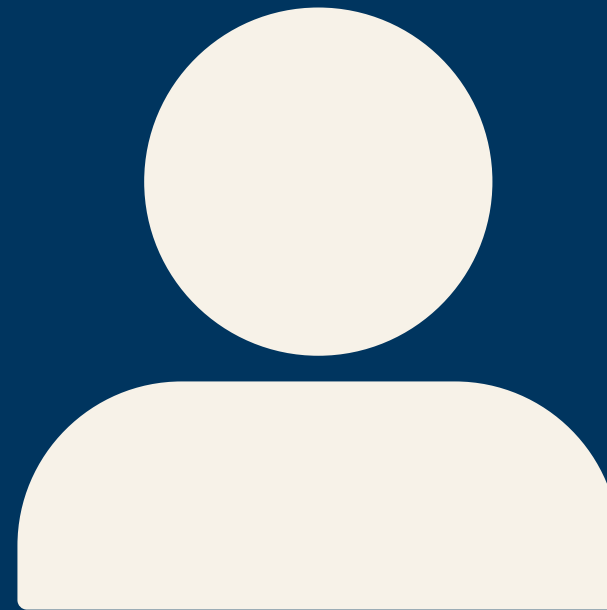
Who is eligible to apply?

Schools who meet the following criteria will be eligible to apply for the
Student Success Fund Grant:

Engaged School Site
Council



Community School
Coordinator



Commitment to
Coordinate



How can interested new/existing CBO partner with schools to access these funds?

Schools will conduct needs assessments and asset map.

Schools will reach out CBOs and can begin to plan partnership.

Schools will submit partnership in grant proposal.



What is the timeline for the SFF's funding allocation's growth?

Under Proposition G, each year the City would place money in the Fund, as follows:

School Year	Amount
2023–2024	\$11,000,000.00
2024–2025	\$35,000,000.00
2025–2026	\$45,000,000.00
2026–2027	\$60,000,000.00

The City would make contributions to the Fund through fiscal year 2037–38 and the amounts would be adjusted annually.

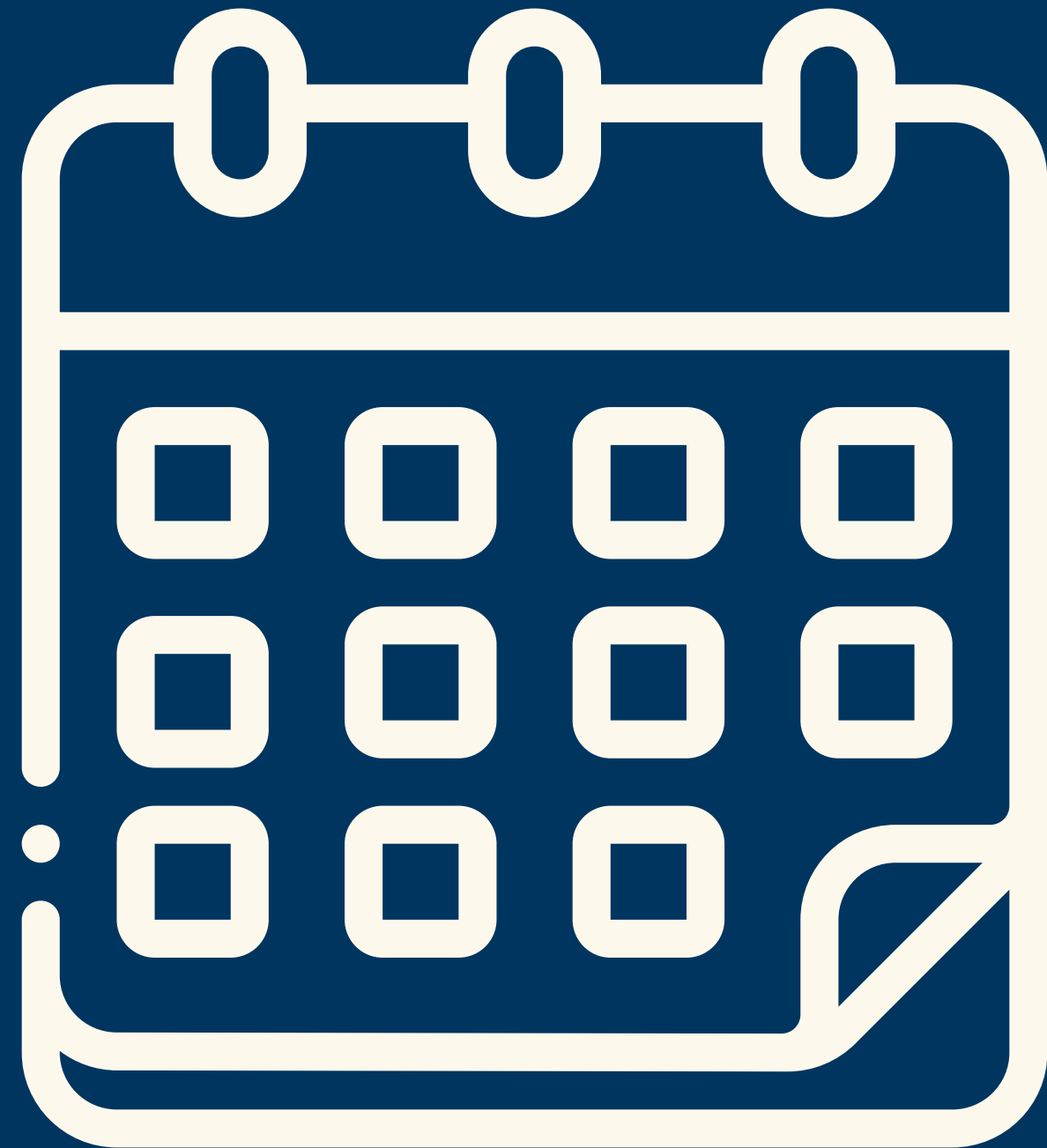
Who will administer, manage and monitor the grant funds?

A collaborative governance body will be created to provide advisory oversight and accountability to the fund.



The operational administration, management, monitoring and awarding of Student Success Grants, Technical Assistance Grants to Eligible Schools will be managed by DCYF & SFUSD.

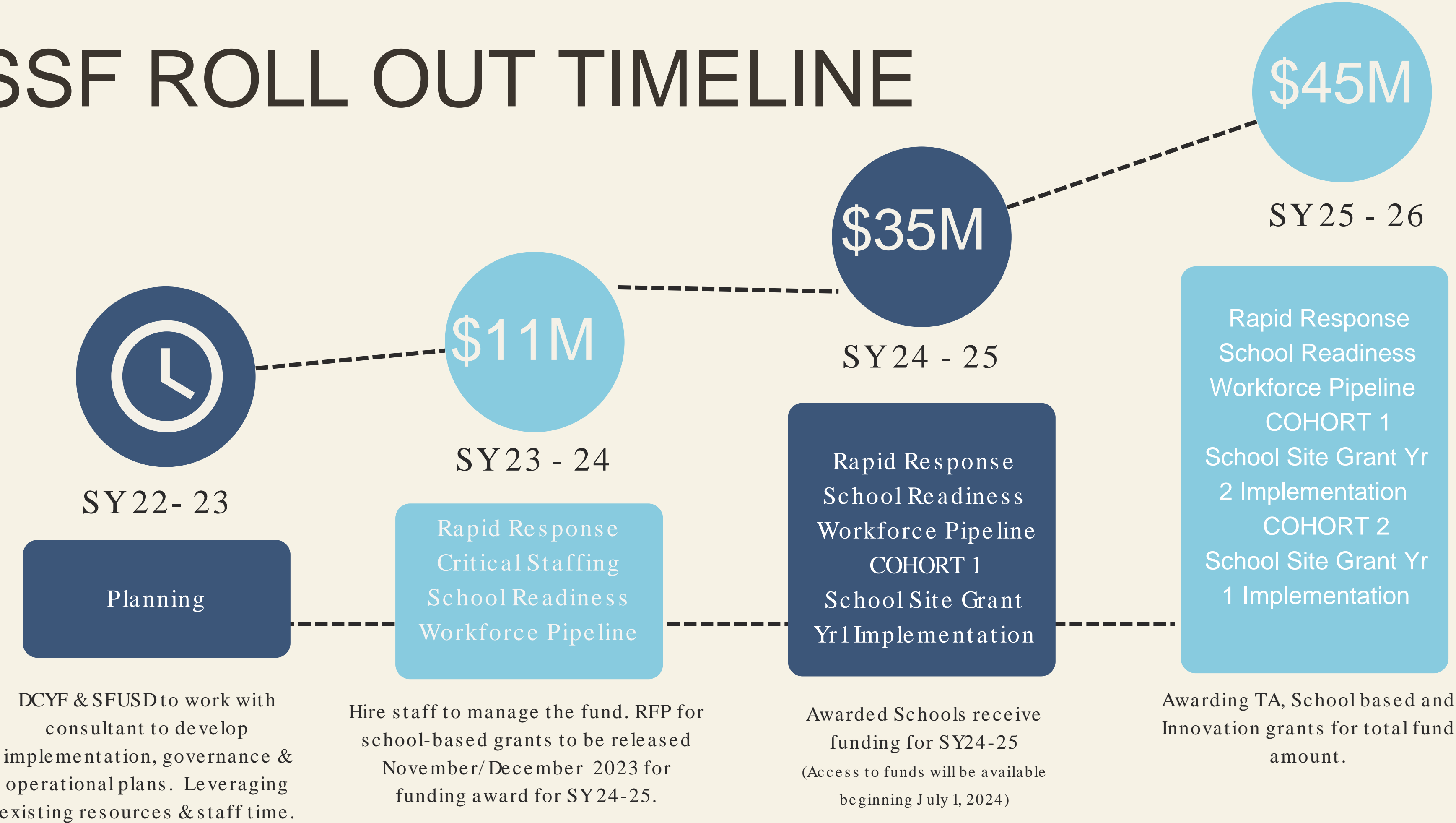
When can schools apply for the Fund?



DCYF will release a Request for
Funding Proposals in
November/December 2023.

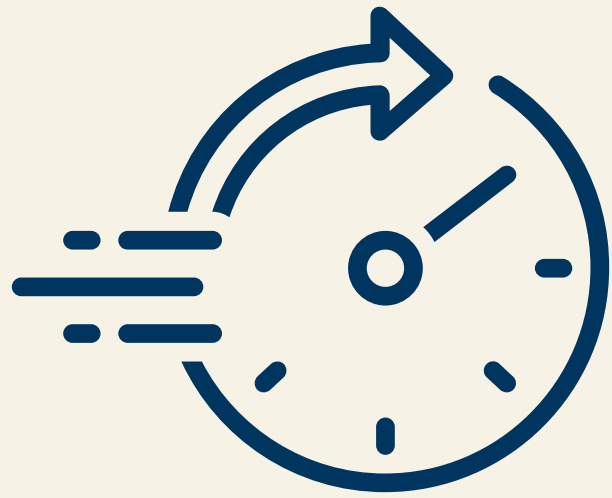
Grants will be awarded in April 2024.
Grant funds will be available for the
2024-2025 School Year.

SSF ROLL OUT TIMELINE



How will \$11M in funds from FY 2023-2024 be distributed?

RAPID RESPONSE



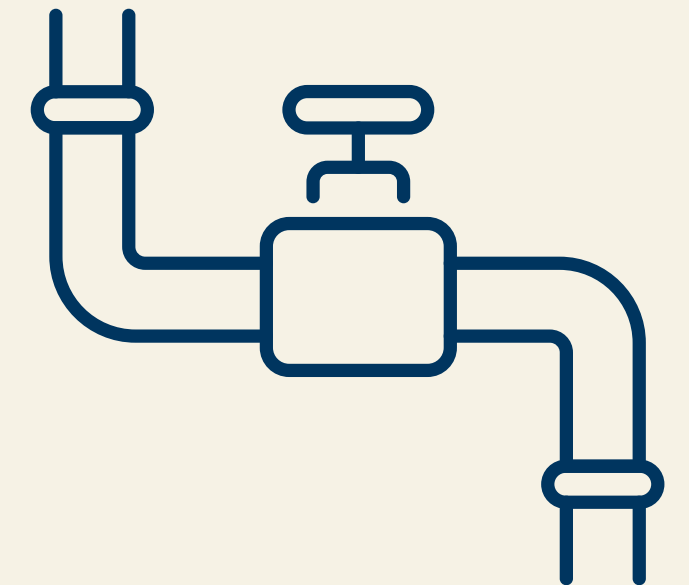
CRITICAL STAFFING



SCHOOL READINESS



Workforce Pipeline



Year 1 Funding Priority



Flexible fund set aside for crisis and emergency needs from school sites. These one-time funds will be accessible year-round and available for short term, small amounts to address urgent needs. Resources will be limited to \$25 K per school.

- Rapid

Example: A school that is experiencing increased and unexpected violence in their community could apply for funding for Trauma Informed Care Counselors to be deployed to work directly with students.

Year 1 Funding Priority Readiness



First year funds to support readiness at school site to hire community school coordinator to provide essential staffing to strengthen readiness and preparation grant application & implementation.

- School

Example: A school that does not currently have a staff member dedicated to school partnership coordination, such as a Community School Coordinator or Beacon Director could apply for Year 1 readiness funds to hire for that position to begin the planning, coordination, community needs assessment and partnership development required for SSF grant submission, implementation and management.

Year 1 Funding Priority



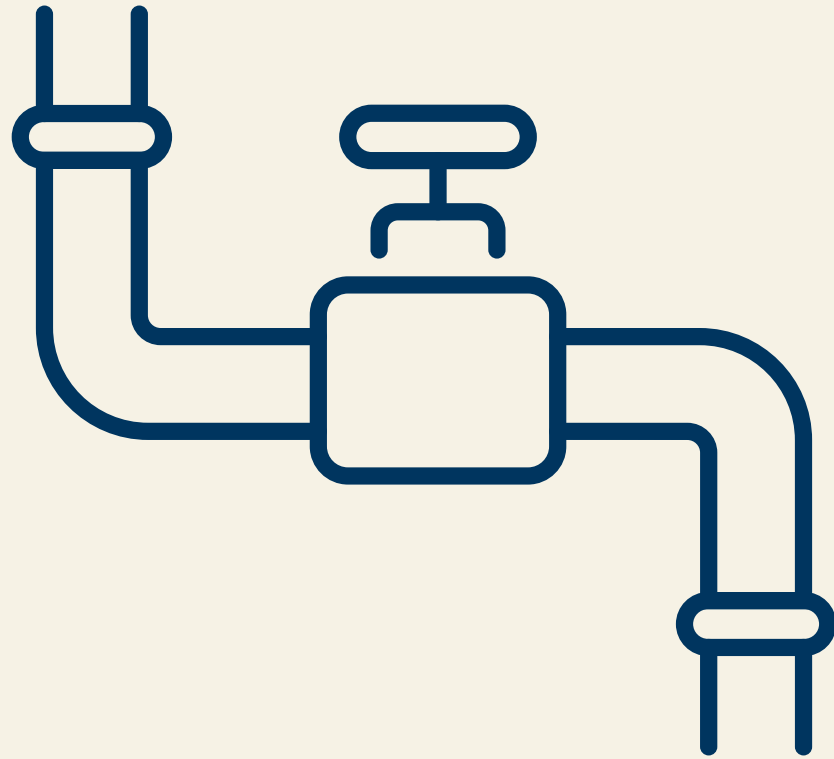
Schools may identify critical non-core staffing positions that schools need to be filled that currently do not have funding for the SY2023-24.

- Critical Staffing

Example: Increase FTE from .5 to 1.0 for Social worker, nurse, para-professional etc.

Year 1 Funding Priority

- Workforce Pipeline



This priority focuses on addressing workforce shortages in after school staffing, para-professional staffing, and school social worker and school district nurse staffing.

Examples:

School Social Worker and School
District Nurse Credential Pathway

First Source Hire

Youth Worker Institute

More details on the process to apply for Year
1 funds will be available by July 31, 2023, on
the Student Success Fund website.

THANK
YOU



SFUSD

