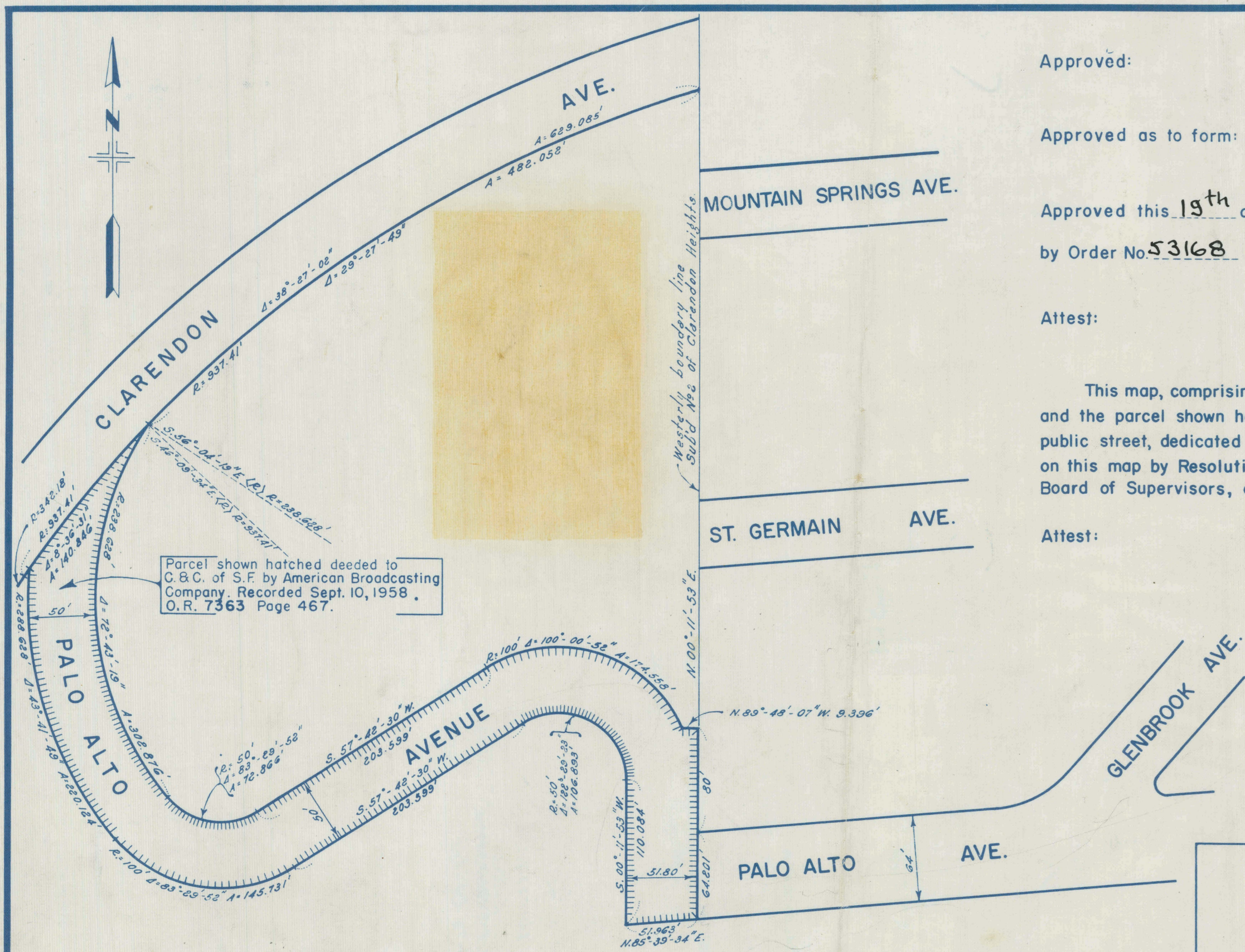


24



Parcel shown hatched deeded to C. & C. of S.F. by American Broadcasting Company. Recorded Sept. 10, 1958. O.R. 7363 Page 467.

BASIS OF BEARINGS  
MIDTOWN TERRACE SUBDIVISION NO. 5  
Recorded April 19, 1957 Map Book "R",  
Page 92 to 94.

H42177  
Book "S" of Maps - Pg 24.  
(1 sheet.)

FILED  
Not Returnable

RECORDED AT REQUEST OF  
Board of Supervisors  
At 5 Min Past 10 M  
DEC 16 1958  
City and County of San Francisco, Calif.

Shirley A. Boney  
RECORDER

Approved: Reuben H. Owens  
City Engineer  
Approved as to form: George S. Baglini  
City Attorney  
Approved this 19<sup>th</sup> day of November 1958  
by Order No. 53168  
Director of Public Works  
Attest: Shuman D. Quisenberry  
Asst. Director of Public Works

This map, comprising one sheet, is approved and made official and the parcel shown hatched hereon is declared to be an open public street, dedicated to public use to be known by name as shown on this map by Resolution Number 1070-58 of the Board of Supervisors, adopted the 8<sup>TH</sup> day of December 1958  
Attest: Robert J. Dolan  
Clerk of the Board of Supervisors

MAP  
SHOWING THE EXTENSION  
OF  
PALO ALTO AVENUE  
WESTERLY TO CLARENDON AVENUE

CITY AND COUNTY OF SAN FRANCISCO DEPARTMENT OF PUBLIC WORKS BUREAU OF ENGINEERING DIVISION OF SURVEYS AND MAPPING REUBEN H. OWENS, CITY ENGINEER		
SCALE: 1" = 80'	AUGUST 1958	
Surveyed.....	Index No.....	Order No.....
Compiled.....	Computed R.D.....	Checked J.H.M.
Drawn L.E.G.	Traced L.E.G.	Checked G.G.W.
REFERENCES T-10-8; T-13-15; SUR. 57		SHEET 1 OF 1 SHEETS A-16-125