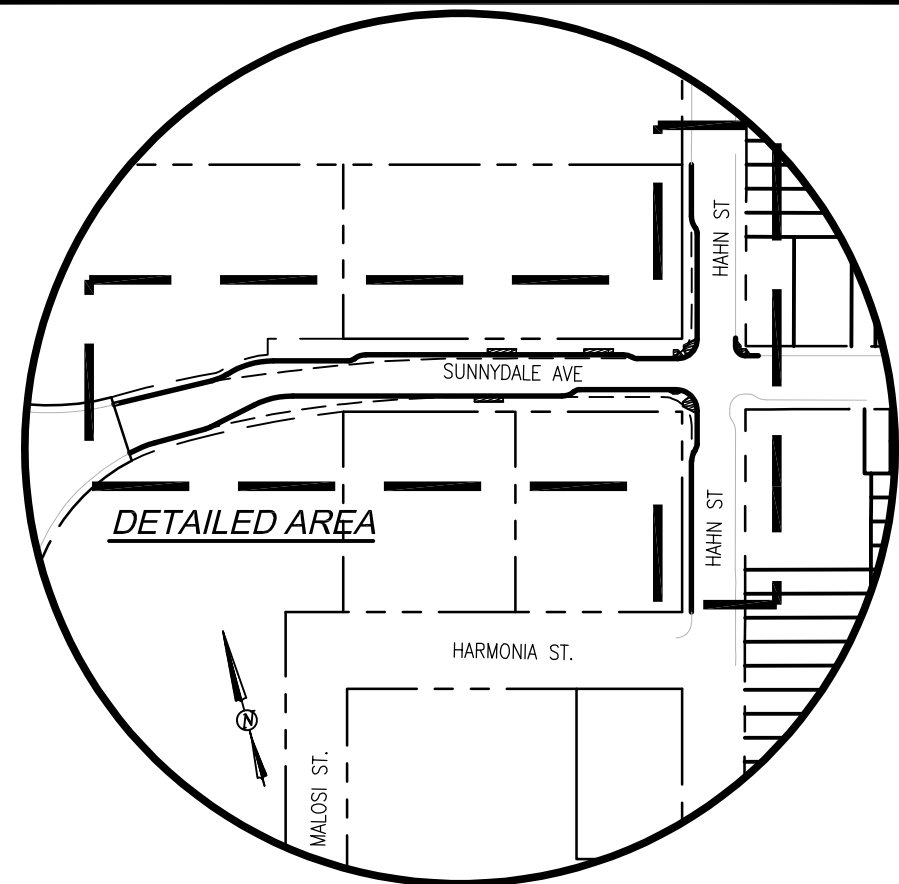


Janderson Jul 23, 2024 - 12:42pm U:\1900035 Sunnydale 1A-3 Infrastructure Improvements\DWG EXHIBITS\2023-05-01 020 Maps\1900035 020 Map.dwg



**VICINITY MAP**  
1"=200'

**LEGEND**

- XXXX XXX ASSESSORS BLOCK AND LOT NUMBERS
- NEW CURB LINE
- PROPERTY LINE
- EXISTING OFFICIAL CURB TO REMAIN
- EXISTING OFFICIAL CURB TO BE REMOVED
- RIGHT OF WAY EASEMENT

REFERENCE:

GM 248

A-17-230

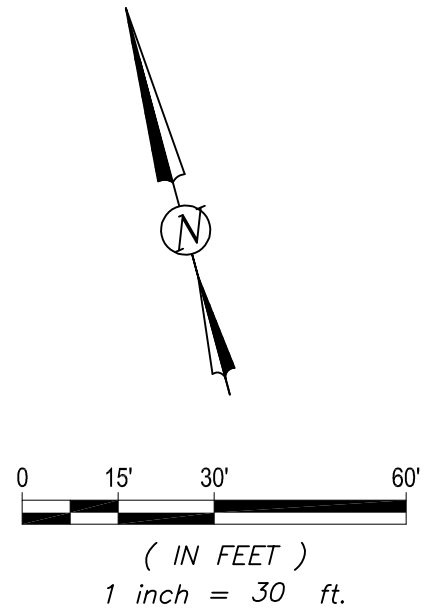
FINAL MAP 11040 SUNNYDALE HOPE SF PROJECT, RECORDED APR 1, 2022 IN BOOK 2 OF FINAL MAPS, PAGES 95-99, OFFICE OF THE CITY AND COUNTY RECORDER

LINE TABLE	
LINE #	LENGTH
L2	54.80'
L3	50.38'
L4	280.17'
L5	100.43'
L6	34.14'
L7	157.40'
L8	13.41'

LINE TABLE	
LINE #	LENGTH
L10	8.33'
L11	53.68'
L12	110.06'
L13	42.47'
L14	267.74'
L15	78.18'
L16	105.51'

CURVE TABLE			
CURVE #	LENGTH	RADIUS	DELTA
C1	28.51'	116.00'	14°05'01"
C2	5.11'	25.00'	11°43'11"
C3	42.27'	90.00'	26°54'35"
C4	13.42'	20.00'	38°25'58"
C5	6.71'	10.00'	38°26'00"
C6	34.56'	22.00'	90°00'00"
C7	6.76'	10.50'	36°52'12"
C8	12.55'	19.50'	36°52'12"
C9	15.71'	10.00'	90°00'00"

CURVE TABLE			
CURVE #	LENGTH	RADIUS	DELTA
C10	12.87'	20.00'	36°52'12"
C11	6.44'	10.00'	36°52'12"
C12	31.42'	20.00'	90°00'00"
C13	5.22'	10.00'	29°55'36"
C14	10.37'	20.00'	29°42'15"
C15	13.42'	20.00'	38°26'00"
C16	6.71'	10.00'	38°26'00"
C17	51.20'	90.00'	32°35'37"
C18	16.61'	50.00'	19°02'21"



APPROVED:

\_\_\_\_\_  
WILLIAM E. BLACKWELL JR., PLS 8251  
ACTING CITY & COUNTY SURVEYOR

\_\_\_\_\_  
DATE

**CITY AND COUNTY OF SAN FRANCISCO**  
DEPARTMENT OF PUBLIC WORKS

OFFICIAL SIDEWALK CHANGE AT THE INTERSECTION OF HAHN STREET AND SUNNYDALE AVENUE, FRONTING AB 6310 LOTS 003, 006 AND AB 6311 LOTS 013, 014, 015

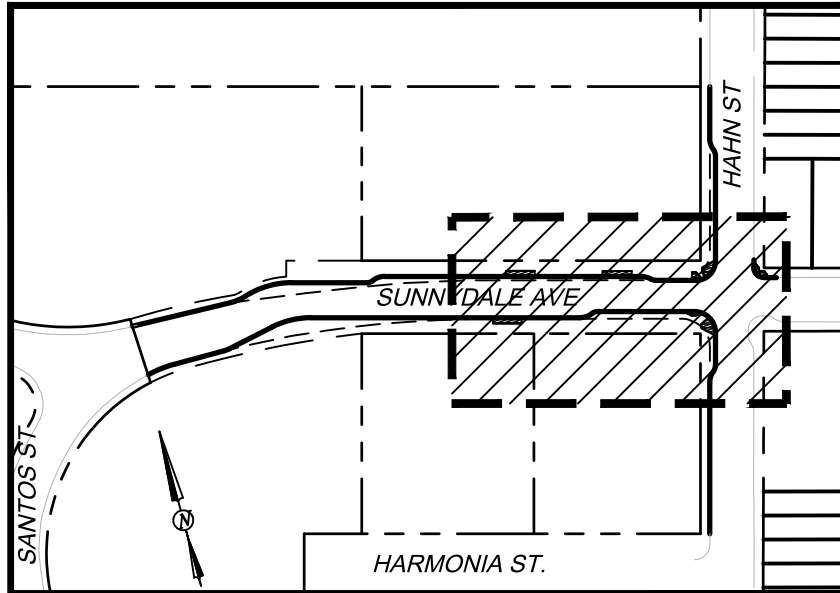
FILE: Q-20-1209

SHEET 1 OF 5

SCALE: 1"=30'

REVISION

Jul 23, 2024 - 12:32pm U:\1900035 Sunnydale 1A-3 Infrastructure Improvements\DWG\EXHIBITS\2023-05-01 020 Maps\1900035 020 Map.dwg Janderson



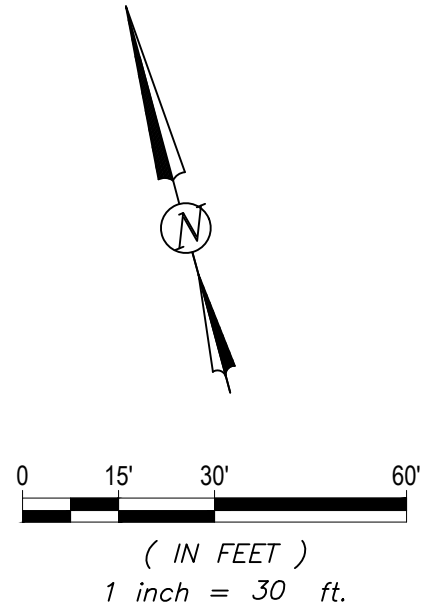
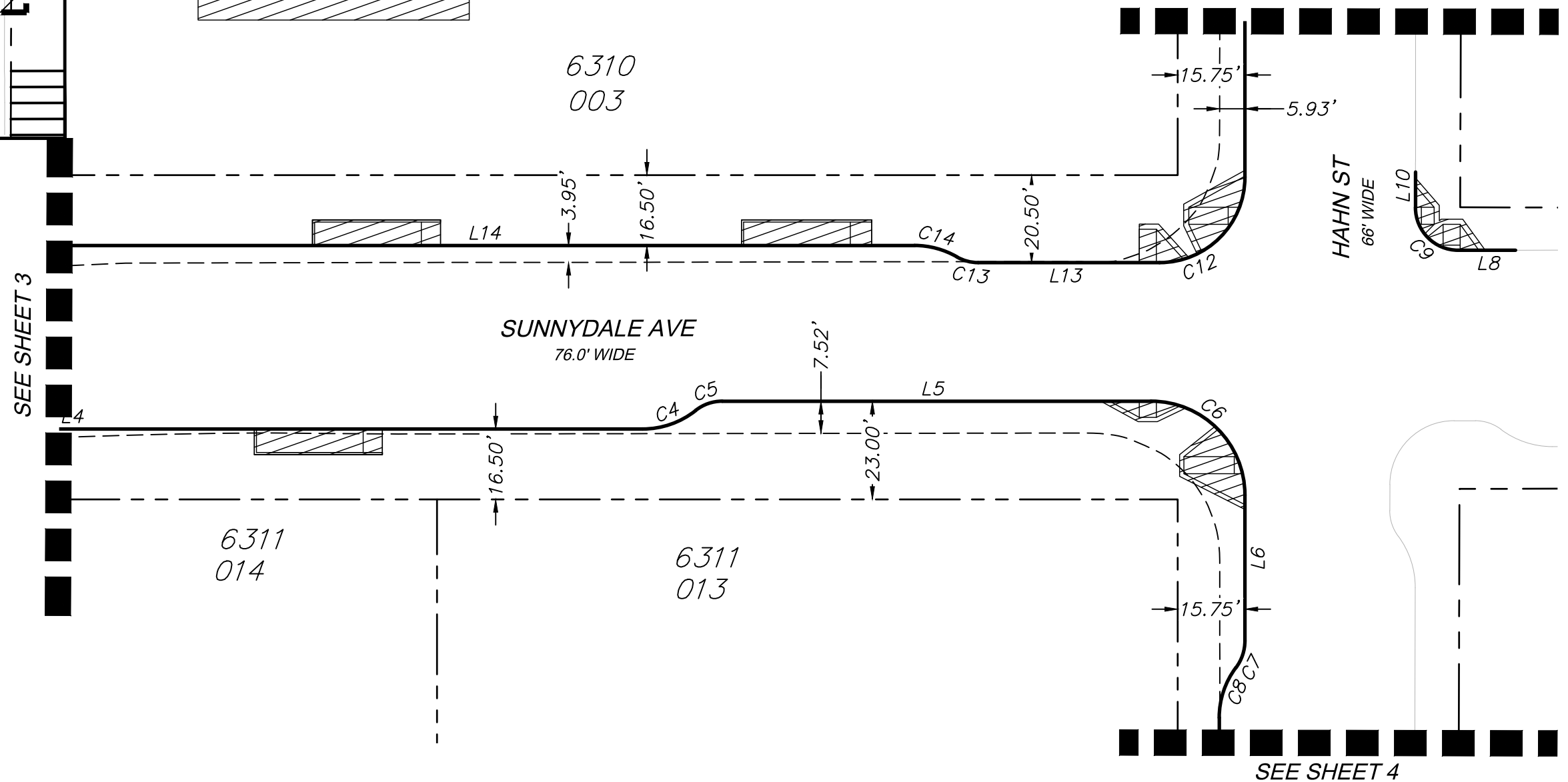
VICINITY MAP  
1"=200'

**LEGEND**

- XXXX XXX ASSESSORS BLOCK AND LOT NUMBERS
- NEW CURB LINE
- - - - - PROPERTY LINE
- EXISTING OFFICIAL CURB TO REMAIN
- - - - - EXISTING OFFICIAL CURB TO BE REMOVED
- RIGHT OF WAY EASEMENT
- ▨ NEW CURB RAMP

**REFERENCE:**

GM 248  
 A-17-230  
 FINAL MAP 11040 SUNNYDALE HOPE SF PROJECT, RECORDED APR 1, 2022 IN BOOK 2 OF FINAL MAPS, PAGES 95-99, OFFICE OF THE CITY AND COUNTY RECORDER  
 SEE SHEET 5



SEE SHEET 3

SEE SHEET 4



**APPROVED:**  
 \_\_\_\_\_  
 WILLIAM E. BLACKWELL JR., PLS 8251  
 ACTING CITY & COUNTY SURVEYOR

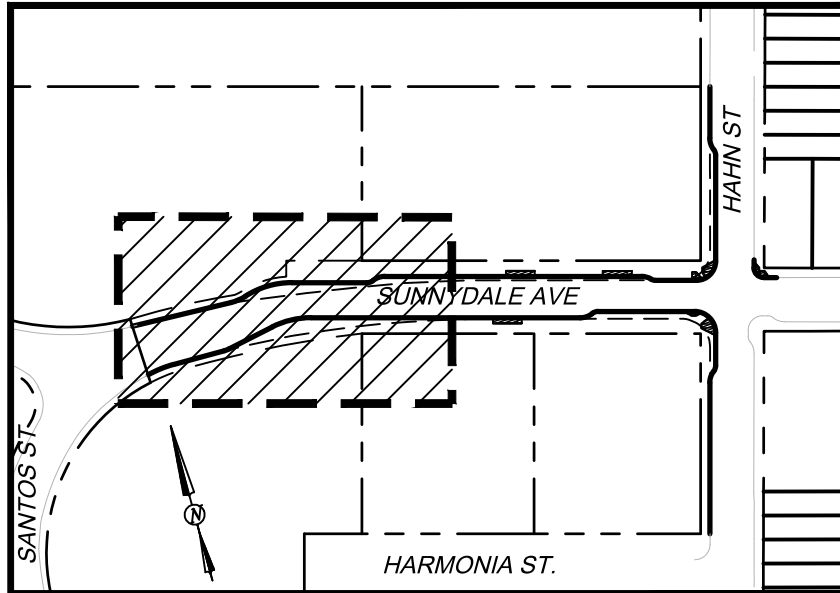
\_\_\_\_\_ DATE

**CITY AND COUNTY OF SAN FRANCISCO**  
 DEPARTMENT OF PUBLIC WORKS

OFFICIAL SIDEWALK CHANGE AT THE INTERSECTION OF HAHN STREET AND SUNNYDALE AVENUE, FRONTING AB 6310 LOTS 003, 006 AND AB 6311 LOTS 013, 014, 015

FILE: Q-20-1209      SHEET 2 OF 5      SCALE: 1"=30'      REVISION

Jul 23, 2024 - 12:32pm U:\1900035 Sunnydale 1A-3 Infrastructure Improvements\DWG\EXHIBITS\2023-05-01 020 Maps\1900035 020 Map.dwg



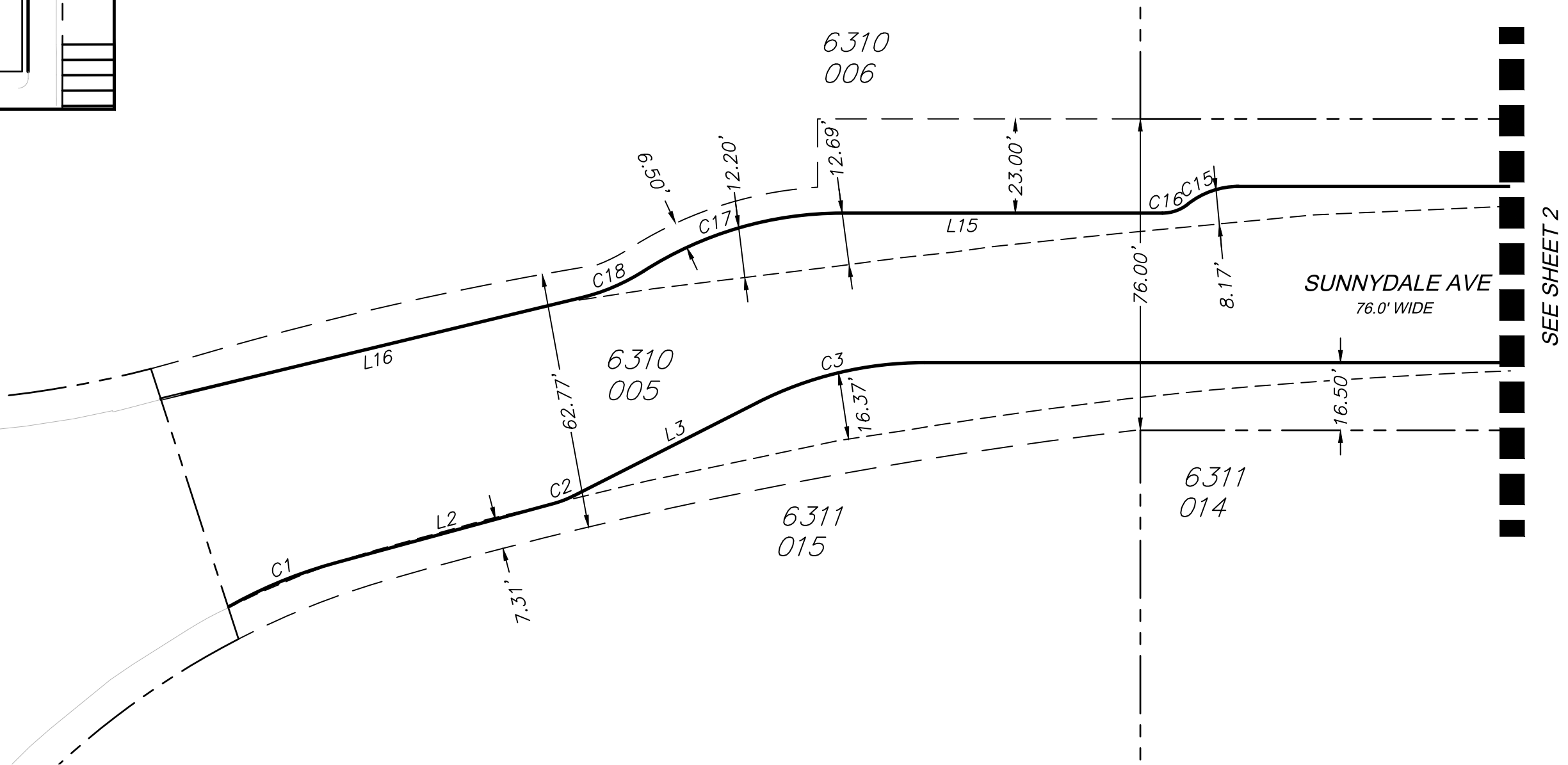
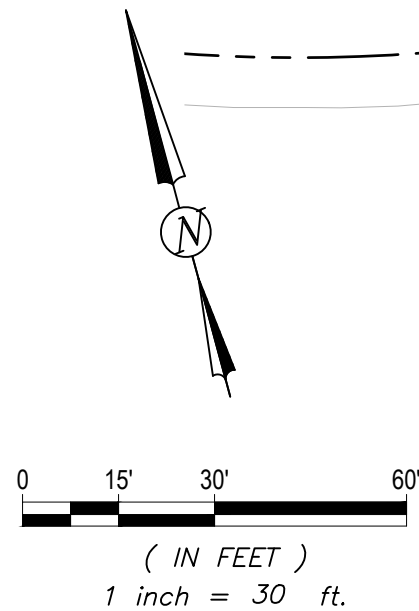
VICINITY MAP  
1"=200'

LEGEND

- XXXX XXX ASSESSORS BLOCK AND LOT NUMBERS
- NEW CURB LINE
- PROPERTY LINE
- EXISTING OFFICIAL CURB TO REMAIN
- EXISTING OFFICIAL CURB TO BE REMOVED
- RIGHT OF WAY EASEMENT
- ▨ NEW CURB RAMP

REFERENCE:

GM 248  
 A-17-230  
 FINAL MAP 11040 SUNNYDALE HOPE SF PROJECT, RECORDED APR 1, 2022 IN BOOK 2 OF FINAL MAPS, PAGES 95-99, OFFICE OF THE CITY AND COUNTY RECORDER



APPROVED:

WILLIAM E. BLACKWELL JR., PLS 8251  
ACTING CITY & COUNTY SURVEYOR

DATE

CITY AND COUNTY OF SAN FRANCISCO  
DEPARTMENT OF PUBLIC WORKS

OFFICIAL SIDEWALK CHANGE AT THE INTERSECTION OF HAHN ST AND SUNNYDALE AVENUE, FRONTING AB 6310 LOTS 003, 006 AND AB 6311 LOTS 013, 014, 015

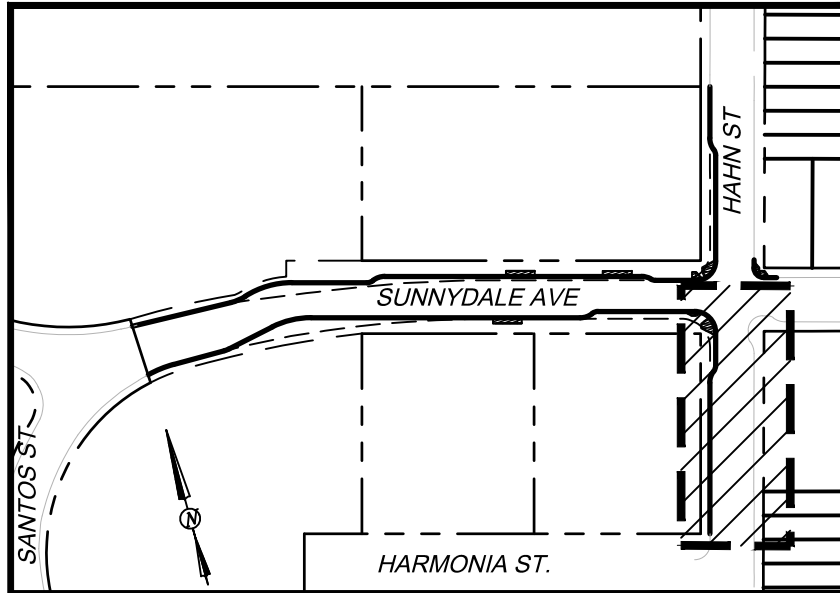
FILE: Q-20-1209

SHEET 3 OF 5

SCALE: 1"=30'

REVISION

Janderson Jul 23, 2024 - 12:32pm U:\1900035 Sunnydale 14-3 Infrastructure Improvements\DWG\EXHIBITS\2023-05-01 020 Maps\1900035 020 Map.dwg



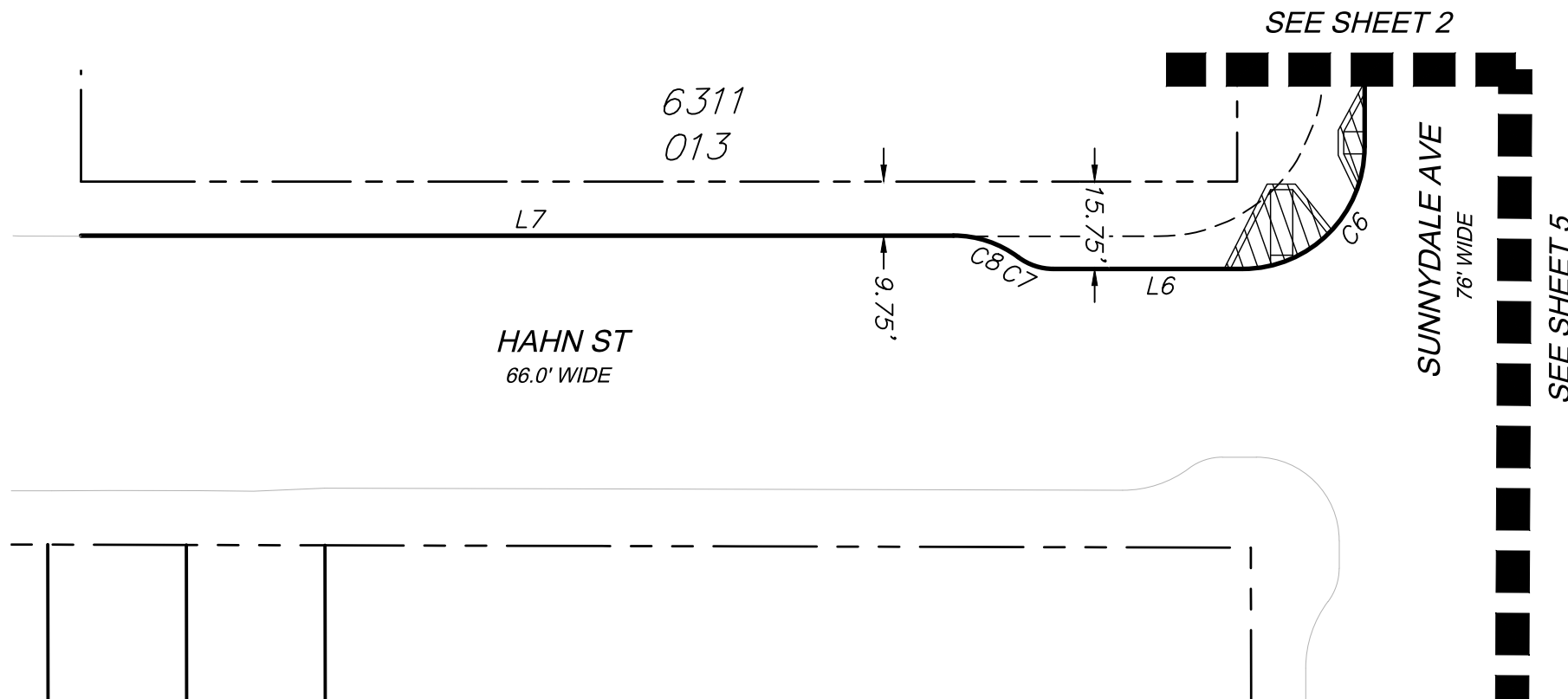
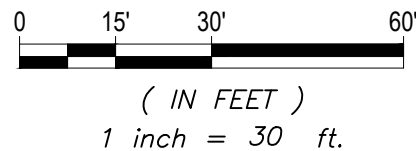
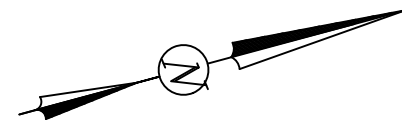
VICINITY MAP  
1"=200'

**LEGEND**

- XXXX XXX ASSESSORS BLOCK AND LOT NUMBERS
- NEW CURB LINE
- - - - - PROPERTY LINE
- EXISTING OFFICIAL CURB TO REMAIN
- - - - - EXISTING OFFICIAL CURB TO BE REMOVED
- - - - - RIGHT OF WAY EASEMENT
- ▨▨▨▨▨▨ NEW CURB RAMP

**REFERENCE:**

GM 248  
 A-17-230  
 FINAL MAP 11040 SUNNYDALE HOPE SF  
 PROJECT, RECORDED APR 1, 2022 IN BOOK  
 2 OF FINAL MAPS, PAGES 95-99, OFFICE  
 OF THE CITY AND COUNTY RECORDER



APPROVED:

\_\_\_\_\_  
 WILLIAM E. BLACKWELL JR., PLS 8251  
 ACTING CITY & COUNTY SURVEYOR

DATE

**CITY AND COUNTY OF SAN FRANCISCO**  
 DEPARTMENT OF PUBLIC WORKS

OFFICIAL SIDEWALK CHANGE AT THE INTERSECTION OF HAHN STREET AND SUNNYDALE AVENUE, FRONTING AB 6310 LOTS 003, 006 AND AB 6311 LOTS 013, 014, 015

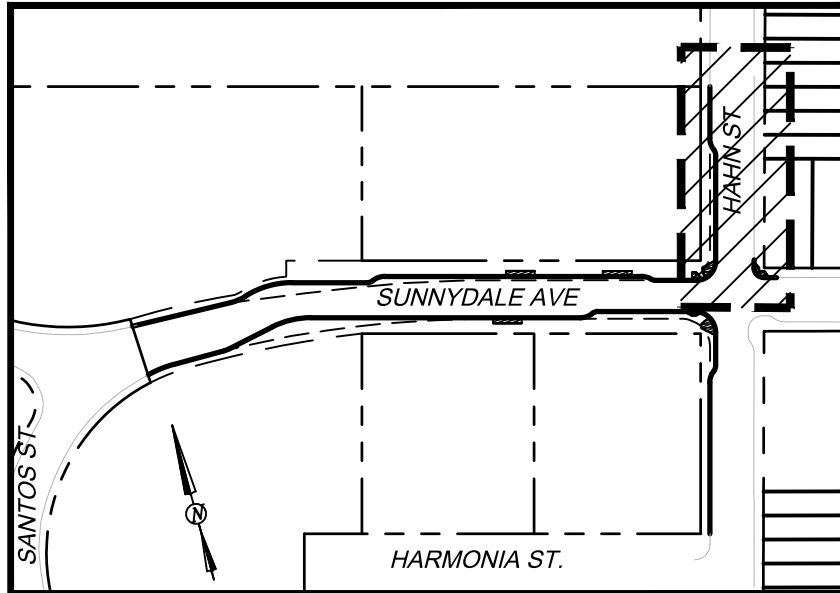
FILE: Q-20-1209

SHEET 4 OF 5

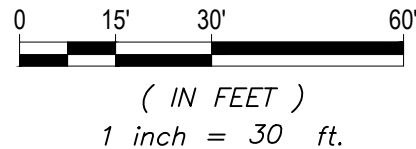
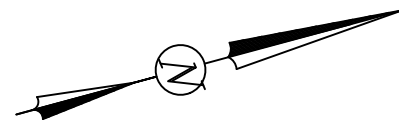
SCALE: 1"=30'

REVISION

Jul 23, 2024 - 12:32pm U:\1900035 Sunnydale 1A-3 Infrastructure Improvements\DWG\EXHIBITS\2023-05-01 020 Maps\1900035 020 Map.dwg Janderson



VICINITY MAP  
1"=200'

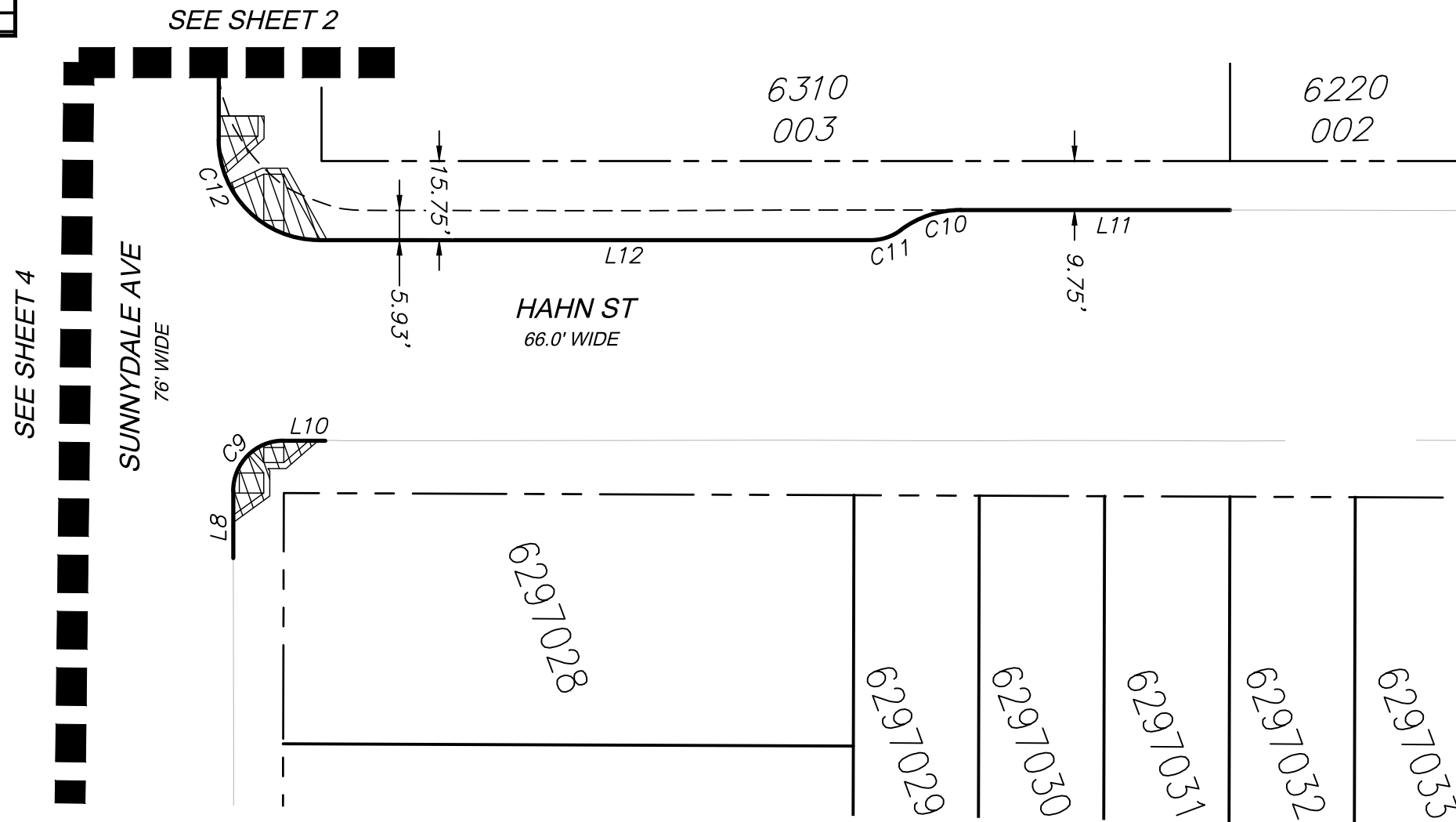


**LEGEND**

- XXXX XXX ASSESSORS BLOCK AND LOT NUMBERS
- NEW CURB LINE
- - - - - PROPERTY LINE
- EXISTING OFFICIAL CURB TO REMAIN
- - - - - EXISTING OFFICIAL CURB TO BE REMOVED
- RIGHT OF WAY EASEMENT
- ▨ NEW CURB RAMP

**REFERENCE:**

GM 248  
 A-17-230  
 FINAL MAP 11040 SUNNYDALE HOPE SF  
 PROJECT, RECORDED APR 1, 2022 IN BOOK  
 2 OF FINAL MAPS, PAGES 95-99, OFFICE  
 OF THE CITY AND COUNTY RECORDER



APPROVED:



WILLIAM E. BLACKWELL JR., PLS 8251  
ACTING CITY & COUNTY SURVEYOR

DATE

CITY AND COUNTY OF SAN FRANCISCO  
DEPARTMENT OF PUBLIC WORKS

OFFICIAL SIDEWALK CHANGE AT THE INTERSECTION OF HAHN STREET AND SUNNYDALE AVENUE, FRONTING AB 6310 LOTS 003, 006 AND AB 6311 LOTS 013, 014, 015

FILE: Q-20-1209

SHEET 5 OF 5

SCALE: 1"=30'

REVISION