



# SUNNYDALE HOPE SF INFRASTRUCTURE PHASE 1A3 ACCEPTANCE

LAND USE AND  
TRANSPORTATION COMMITTEE  
JANUARY 13, 2025

RYAN VANZUYLEN,  
SENIOR PROJECT MANAGER

MAYOR'S OFFICE OF HOUSING AND COMMUNITY DEVELOPMENT

# HOPE SF

Launched in 2007, HOPE SF is a twenty-year human and real estate capital commitment, spanning five mayoral administrations. HOPE SF is the nation's first large-scale community development and reparations initiative aimed at creating vibrant, inclusive mixed-income communities without mass displacement of the original residents.

Hunters View, Sunnydale, Potrero & Potrero Annex, and Alice Griffith, the four HOPE SF sites, share the goal of eradicating intergenerational poverty by:

- Ensuring No Loss of Public Housing.
- Creating an Economically Integrated Community.
- Maximizing the Creation of New Affordable Housing.
- Involving Residents in the Highest Levels of Participation in the Entire Project.
- Providing Economic Opportunities through the Rebuilding Process.
- Integrating Process with Neighborhood Improvement Revitalization Plans.
- Creating Economically Sustainable and Accessible Communities.
- Building a Strong Sense of Community.





**Item #2**  
**File #240925**

Ordinance accepting offers of public infrastructure associated with Sunnydale HOPE SF Project Phase 2 (aka Infrastructure Phase 1A3)

**Proposed for approval today:**

Accept offers of improvement, City to assume maintenance of public infrastructure improvements, establish street widths and grades

**SUNNYDALE HOPE SF INFRASTRUCTURE PHASE 1A3  
LAND USE AND TRANSPORTATION COMMITTEE AGENDA ITEM**

# SUNNYDALE HOPE SF OVERVIEW

- 50-acre site with up to 1,770 new units of housing, including 775 permanently affordable public housing replacement units, at least 194 new affordable units, and 694 market-rate units
- Community center with childcare facility and Boys and Girls Club (Block I)
- Neighborhood-serving spaces including 9 retail spaces, additional childcare, and wellness center (Blocks 3A and 3B)
- New street grid to better connect Sunnydale with the neighborhood and major streetscape and sidewalk improvements
- All new utility infrastructure utilizing SFPUC power
- 3.6 acres of new public open space and landscaped areas





## SUNNYDALE HOPE SF INFRASTRUCTURE IA3



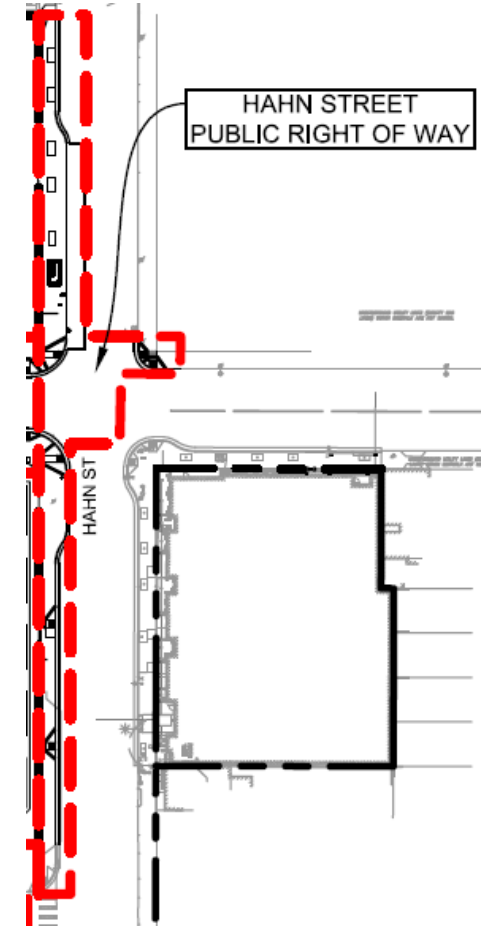
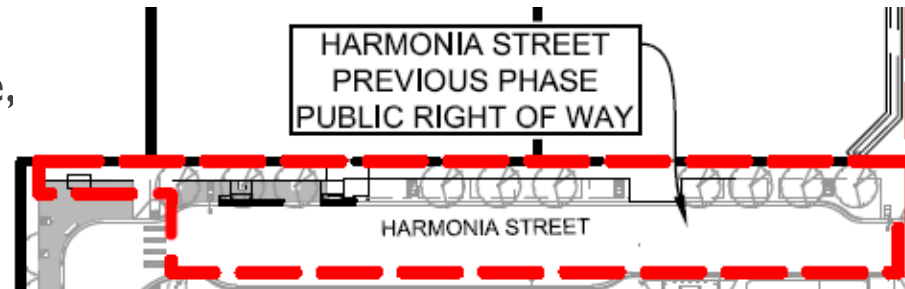
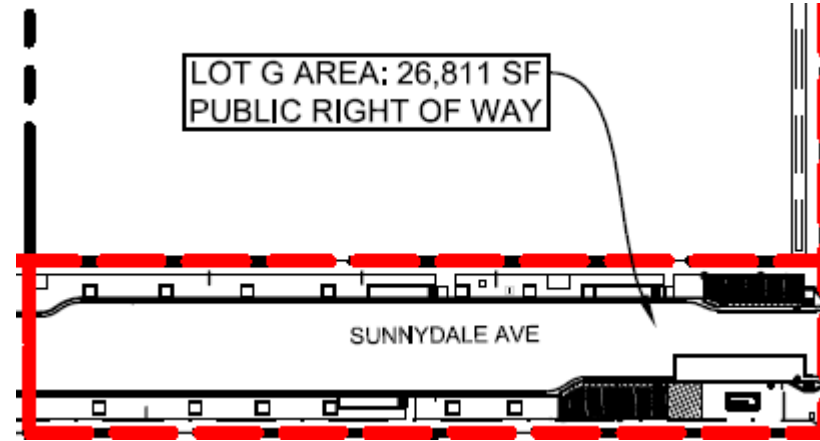
- 2<sup>nd</sup> Infrastructure development phase at Sunnydale HOPE SF
- Development Sponsors are Related California and Mercy Housing California
- 4.14 acres including Block 1/Community Center, affordable buildings 3A and 3B (170 new units), and one acre for Sunnydale Ave public Right of Way

## TIMELINE

- Horizontal construction:  
Spring 2022 – Spring 2024
- Vertical Construction:  
Winter 2023 – Winter 2025

## INFRASTRUCTURE IMPROVEMENTS

- Includes streets, sidewalks, curb ramps, sewer, water, streetlights, trees, bike parking racks
- Public right of ways along Sunnydale Ave, Hahn St, and Harmonia St





Thank you