

EXHIBIT D

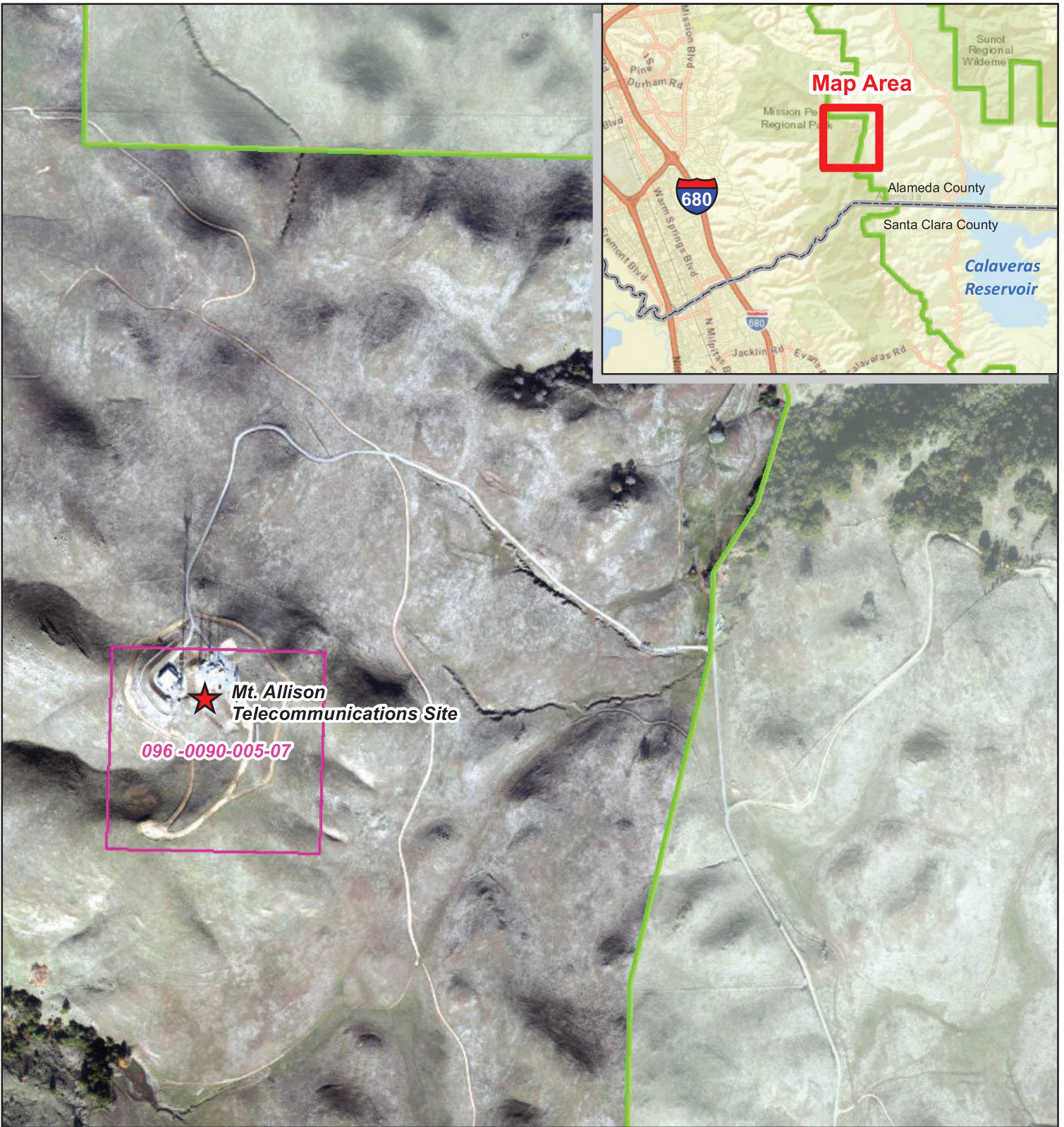
Additional SFPUC Equipment Rent

[see attached]



EXHIBIT D

SFPUC Additional Equipment Rent

SFPUC EQUIPMENT LIST					
A	SHELTER SPACE	Qty.	Cost	Total	Comment
A.1	Equipment Rack				
	Enclosed Cabinet	1	\$ 565.00	\$ 565.00	2' x 2' floor space, no larger
	Open Rack	1	\$ 565.00	\$ 565.00	2' x 2' floor space, no larger
A.2	Utility Connect for Equipment Rack				
	240VAC 25A circuits to DC system rack	0	\$ -	\$ -	TBD depending on utility charge for building or individual
A.3	Cavity				
	N/A - Integrated into ESS Cabinet	0	\$ -	\$ -	inside cabinet no additional charge
B	TOWER SPACE				
B.1	Omni Antennas				
	17.5' Omni Whip Antenna Rx (T-5, 110')	2	\$ 195.00	\$ 390.00	Location has been approved by the tower engineer
	17.5' Omni Whip Antenna Tx (T-5, 80')	1	\$ 195.00	\$ 195.00	Location has been approved by the tower engineer
	Tower Top Amplifier (T5, 110')	1	\$ 60.00	\$ 60.00	Location has been approved by the tower engineer
	GPS Antenna	2	\$ -	\$ -	To be mounted on cable bridge between B-3 and T-5
	4' Omni Whip Antenna (currently T-4, 23')	1	\$ 140.00	\$ 140.00	Existing on T-4 currently not charged for
B2.	Microwave Dish Antennas				
	10' Dish Antenna (T-1, 21' CL)	1	\$ 705.00	\$ 705.00	Legs & height selected by Motorola
	6' Dish Antenna (T-1, 19' CL)	1	\$ 450.00	\$ 450.00	Legs & height selected by Motorola
	4' Dish Antenna (T-1, 17' CL)	1	\$ 296.00	\$ 296.00	Legs & height selected by Motorola
Proposed Additional Rent for New Equipment (TOTAL)				\$ 3,366.00	



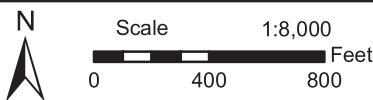
Legend

-  SFPUC Parcels (Fee Owned)
-  Tax Assessor Parcel



**Mt. Allison
Telecommunications Site
Alameda County**

The City does not guarantee that the information is accurate or complete. The City is not responsible for any damages arising from the use of data. Users should verify the information before making project commitments.



Date: 12/6/24 Author: JGL