

CITY AND COUNTY OF SAN FRANCISCO
DEPARTMENT OF PUBLIC WORKS
BUREAU OF STREET USE
AND MAPPING

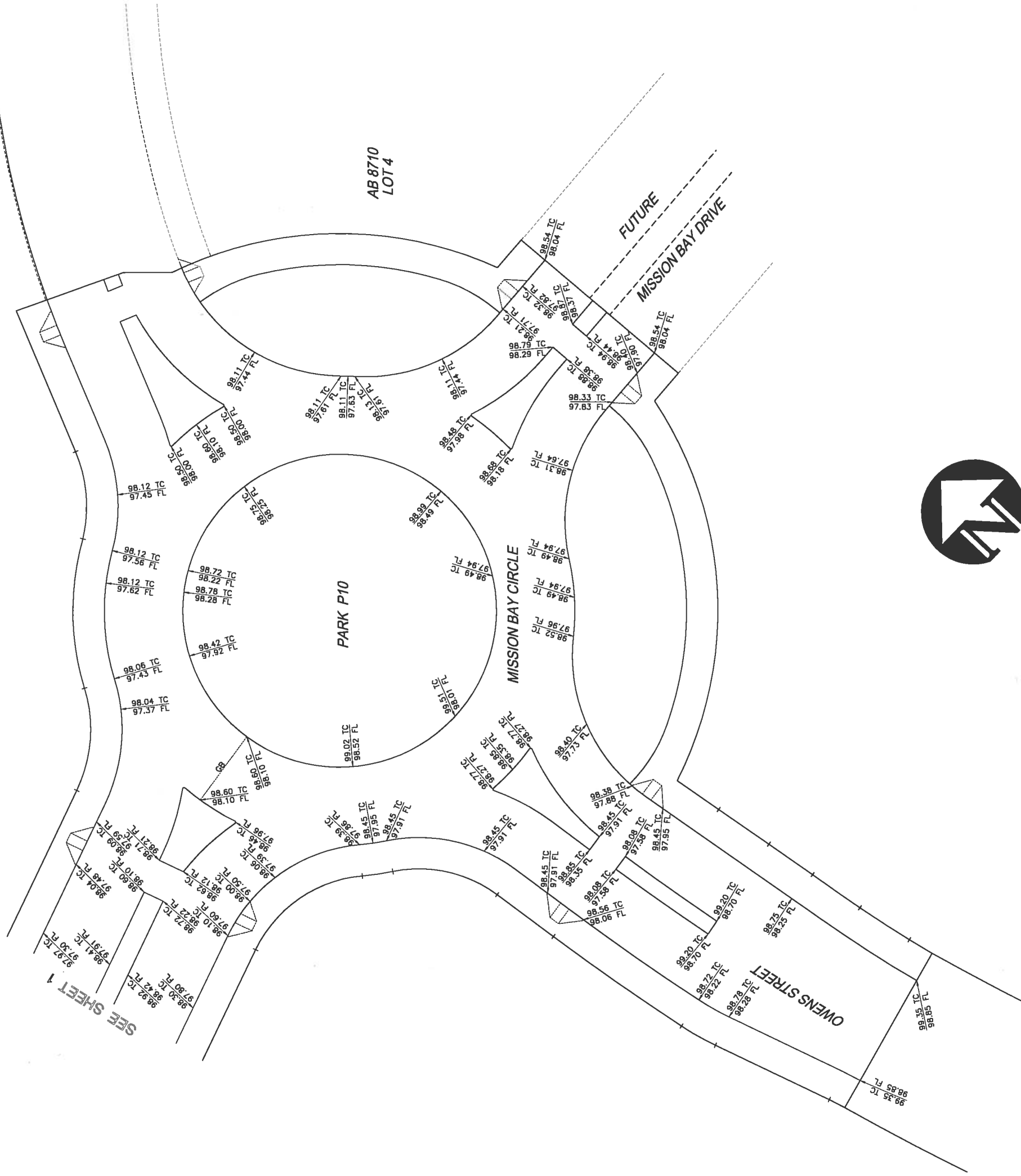
MAP
SHOWING THE OFFICIAL SIDEWALKS AND CURB
ELEVATIONS AND GRADES ALONG
MISSION BAY DRIVE, MISSION BAY CIRCLE
AND OWENS STREET

SCALE: 1"=20'
SHEET 1 OF 2 SHEETS

NO.	DATE	DESCRIPTION TABLE OF CHANGES	BY	CHECKED:

APPROVED: _____
DATE: _____

FILE: _____
Q-20-175



CITY AND COUNTY OF SAN FRANCISCO
 DEPARTMENT OF PUBLIC WORKS
 BUREAU OF STREET USE
 AND MAPPING

MAP
 SHOWING THE OFFICIAL SIDEWALKS AND CURB
 ELEVATIONS AND GRADES ALONG
 MISSION BAY DRIVE, MISSION BAY CIRCLE
 AND OWENS STREET

SCALE: 1"=20'
 SHEET 2 OF 2 SHEETS

APPROVED: _____ FILE: Q-20-175
 DATE: _____

NO.	DATE	DESCRIPTION TABLE OF CHANGES	BY	CHECKED:

SEVENTH STREET
(82.50' WIDE)

BERRY STREET
CONNECTOR

CHANNEL

STATE TRUST PARCEL 6

FORMER OWENS STREET
SV-40

FORMER SIXTH STREET
SV-38

FORMER SIXTH STREET
SV-39

STATE TRUST
PARCEL 2

FUTURE
CHANNEL STREET

STATE TRUST
PARCEL 2

FORMER
OWENS
STREET
SV-35

AB 8710
LOT 4

AB 8711
LOT 11

MAP SHOWING THE OPENING OF MISSION BAY DRIVE, MISSION BAY CIRCLE AND OWENS STREET

CITY AND COUNTY OF SAN FRANCISCO
DEPARTMENT OF PUBLIC WORKS
BUREAU OF STREET USE AND MAPPING

SCALE: 1" = 50'

REFERENCES:

BOOK DD OF SURVEY MAPS, PAGES 116-121
BOOK CC OF SURVEY MAPS, PAGES 123-131
BOOK Z OF SURVEY MAPS, PAGES 97-113

SHEET 1 OF 2 SHEET

A-17-172

THIS MAP, COMPRISING OF ONE (1) SHEET, IS APPROVED AND MADE OFFICIAL AND THE PARCELS SHOWN HEREON ARE DECLARED TO BE OPEN PUBLIC STREET, DEDICATED TO PUBLIC USE TO BE KNOWN BY NAME AS SHOWN ON THIS MAP BY ORDINANCE NO. _____ DAY OF _____, 2013.

APPROVED AS TO FORM:

BY: _____

APPROVED THIS _____ DAY OF _____, 2013

BY ORDER NO. _____ DIRECTOR OF PUBLIC WORKS

RECORDER'S STATEMENT

FILED THIS _____ DAY OF _____, 2013, AT _____ M.
IN BOOK _____ OF SURVEY MAPS, AT PAGE _____, AT THE
REQUEST OF THE COUNTY SURVEYOR OF THE CITY AND COUNTY
OF SAN FRANCISCO.

SIGNED _____ COUNTY RECORDER

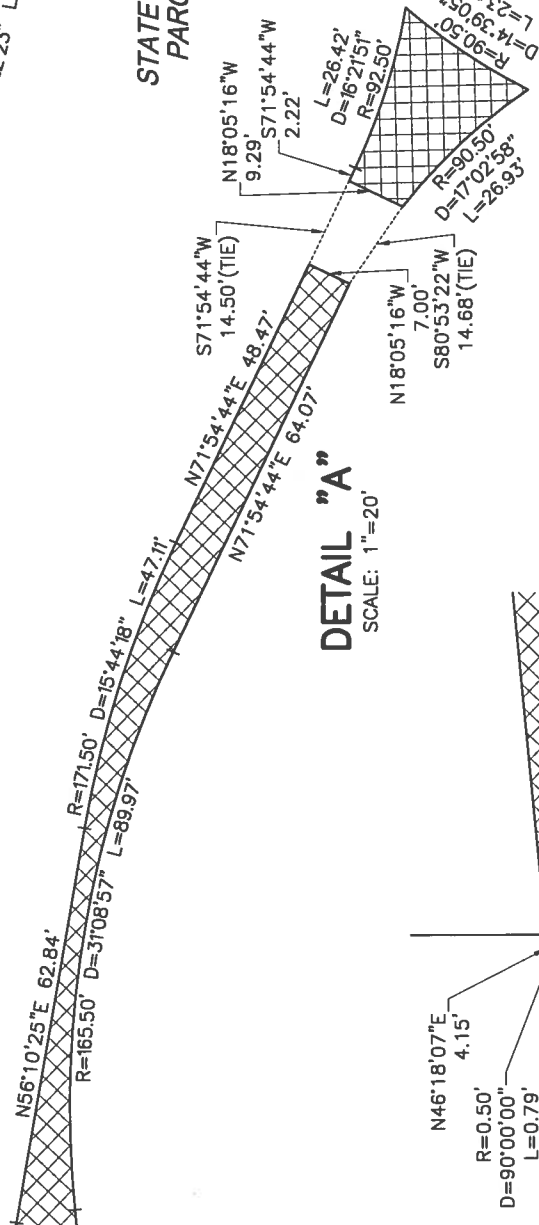
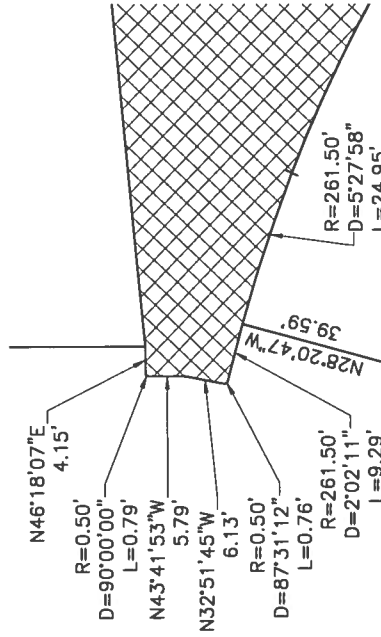
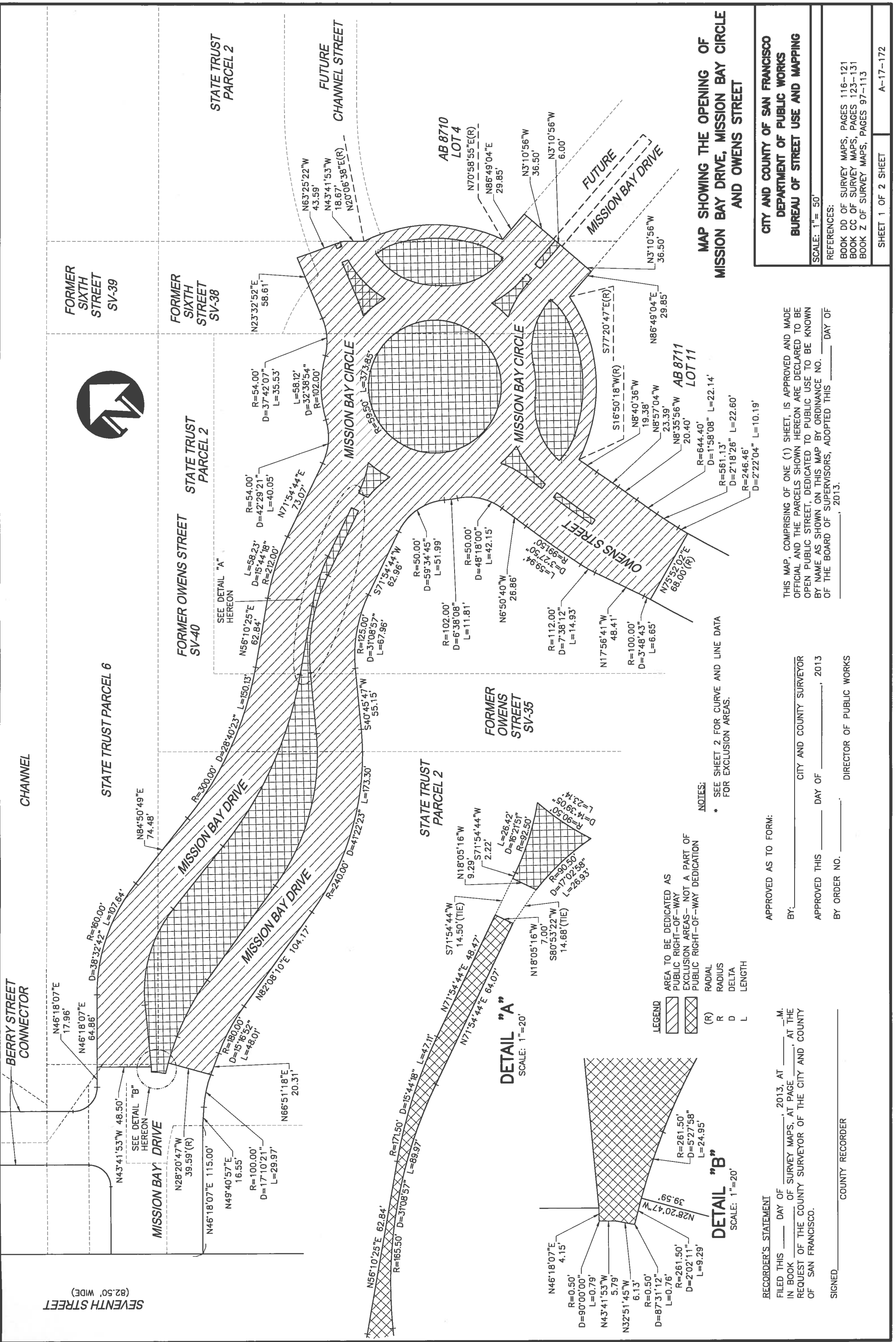
- LEGEND
- AREA TO BE DEDICATED AS PUBLIC RIGHT-OF-WAY
 - EXCLUSION AREAS - NOT A PART OF PUBLIC RIGHT-OF-WAY DEDICATION
 - (R) RADIAL
 - R RADIUS
 - D DELTA
 - L LENGTH

NOTES:

* SEE SHEET 2 FOR CURVE AND LINE DATA FOR EXCLUSION AREAS.

DETAIL "A"
SCALE: 1"=20'

DETAIL "B"
SCALE: 1"=20'



MAP SHOWING THE OPENING OF
MISSION BAY DRIVE, MISSION BAY CIRCLE
AND OWENS STREET

CITY AND COUNTY OF SAN FRANCISCO
DEPARTMENT OF PUBLIC WORKS
BUREAU OF STREET USE AND MAPPING

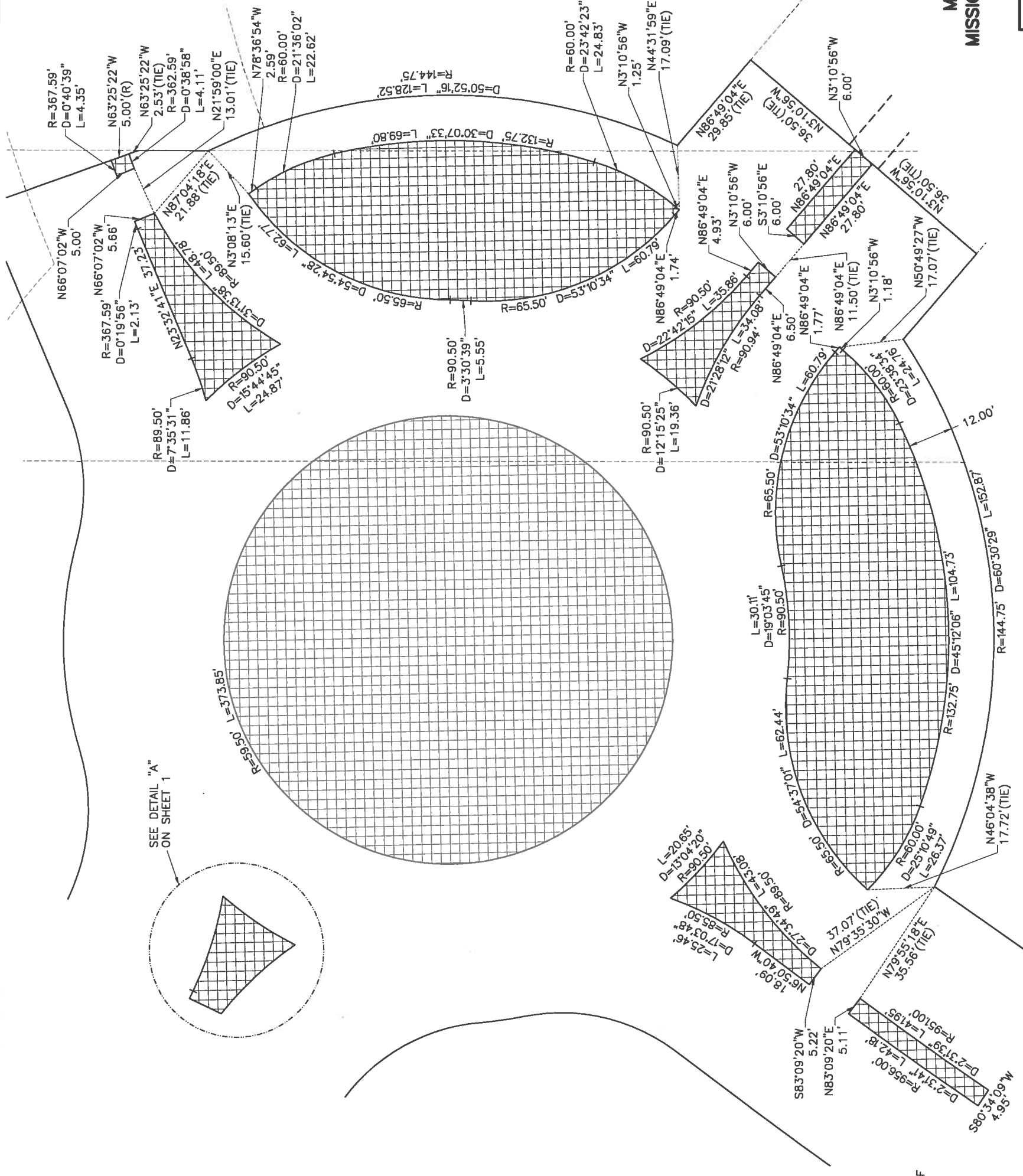
SCALE: 1" = 20'

REFERENCES:

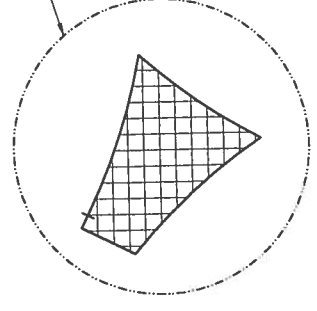
BOOK DD OF SURVEY MAPS, PAGES 116-121
BOOK CC OF SURVEY MAPS, PAGES 123-131
BOOK Z OF SURVEY MAPS, PAGES 97-113

SHEET 2 OF 2 SHEET

A-17-172



SEE DETAIL "A"
ON SHEET 1



LEGEND

- AREA TO BE DEDICATED AS PUBLIC RIGHT-OF-WAY
- EXCLUSION AREAS - NOT A PART OF PUBLIC RIGHT-OF-WAY DEDICATION
- (R) RADIAL
- R RADIUS
- D DELTA
- L LENGTH