

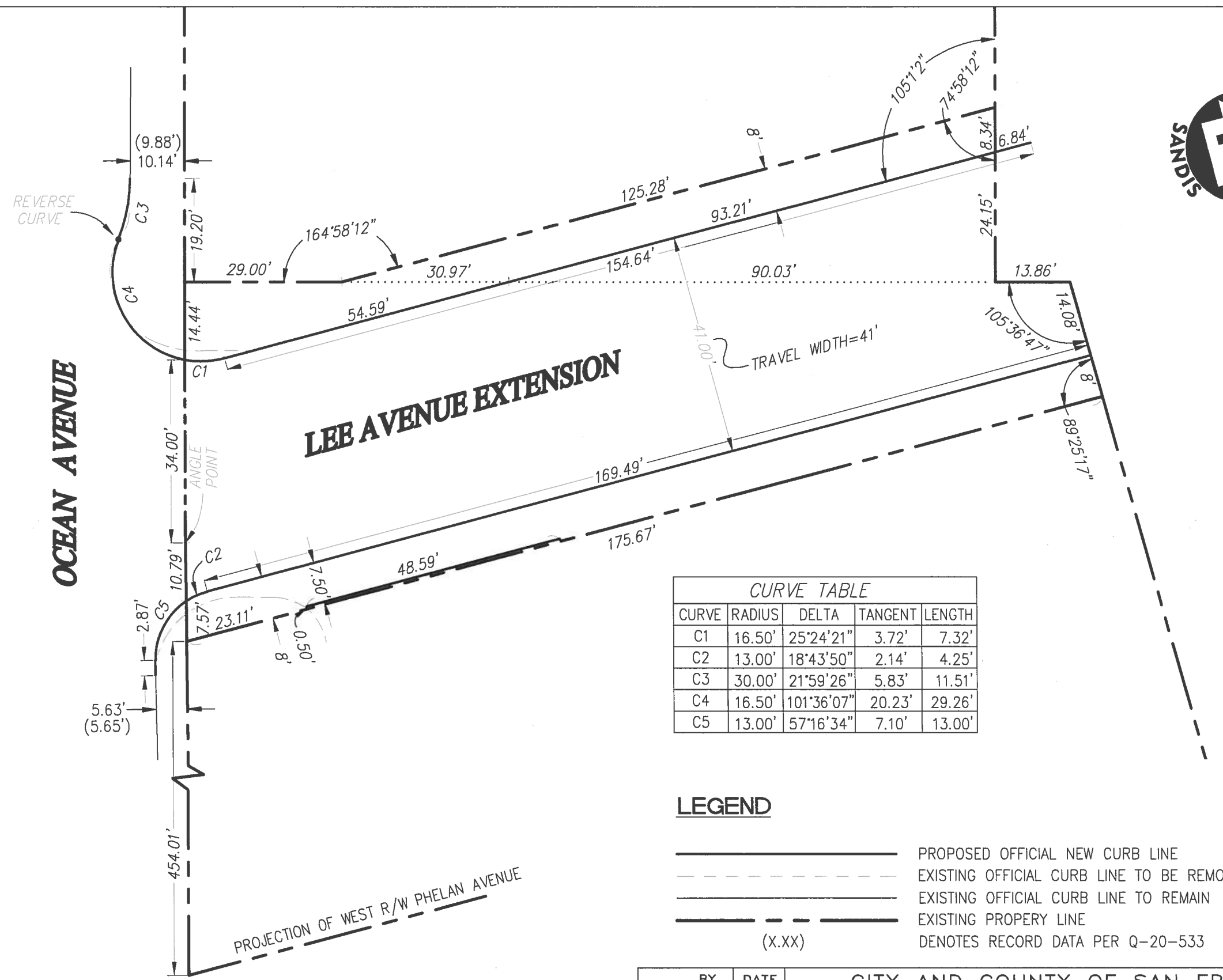
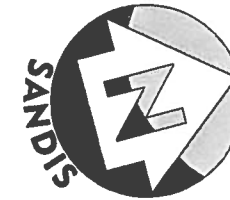
CURVE TABLE				
CURVE	LENGTH	RADIUS	DELTA	TANGENT
C1	6.44	10.00	36°52'12"	3.33
C2	6.44	10.00	36°52'12"	3.33
C6	5.75	10.00	36°56'33"	2.96
C7	5.75	10.00	36°56'33"	2.96
C8	11.28	14.00	46°09'54"	5.97

LEGEND

- PROPOSED OFFICIAL NEW CURB LINE
- EXISTING OFFICIAL CURB LINE TO BE REMOVED
- EXISTING OFFICIAL CURB LINE TO REMAIN
- EXISTING PROPERTY LINE
- DENOTES RECORD DATA PER Q-20-532



REFERENCES					BY	DATE	CITY AND COUNTY OF SAN FRANCISCO					
					DR.	BHS	3/11	DEPARTMENT OF PUBLIC WORKS				
					TR.		PROPOSED OFFICIAL SIDEWALK CHANGE ON THE NORTHERN AND SOUTHERN SIDE OF OCEAN AVENUE WEST OF BRIGHTON AVENUE					
					CK.							
					APP.		APPROVED DATE		 CITY AND COUNTY SURVEYOR	SCALE 1"=20'	FILE	CHANGE
					APP.		10/24/13	SHEET 1 OF 2 SHEETS		Q-20-697		
TABLE OF CHANGES CAUTION: CHECK WITH TRACING TO SEE IF YOU HAVE LATEST REVISION												



CURVE TABLE				
CURVE	RADIUS	DELTA	TANGENT	LENGTH
C1	16.50'	25°24'21"	3.72'	7.32'
C2	13.00'	18°43'50"	2.14'	4.25'
C3	30.00'	21°59'26"	5.83'	11.51'
C4	16.50'	101°36'07"	20.23'	29.26'
C5	13.00'	57°16'34"	7.10'	13.00'

LEGEND

- PROPOSED OFFICIAL NEW CURB LINE
- - - - - EXISTING OFFICIAL CURB LINE TO BE REMOVED
- EXISTING OFFICIAL CURB LINE TO REMAIN
- EXISTING PROPERTY LINE
- (X.XX) DENOTES RECORD DATA PER Q-20-533

BY	DATE	CITY AND COUNTY OF SAN FRANCISCO	
DR. BHS	03/11	DEPARTMENT OF PUBLIC WORKS	
TR.		PROPOSED OFFICIAL SIDEWALK CHANGE	
CK.		ON LEE AVENUE EXTENSION	
APP.		APPROVED DATE	SCALE 1"=20'
APP.		10/24/13	SHEET 2
		<i>Bome St</i>	OF 2 SHEETS
		CITY AND COUNTY SURVEYOR	FILE Q-20-697
			CHANGE

NO.	DATE	DESCRIPTION	BY
TABLE OF CHANGES			
CAUTION: CHECK WITH TRACING TO SEE IF YOU HAVE LATEST REVISION			

REFERENCES