

**LEGEND:**

- POB POINT OF BEGINNING
- POC POINT OF COMMENCEMENT
- TPOB TRUE POINT OF BEGINNING
- (R) RADIAL
- O.R. OFFICIAL RECORDS
- STREET VACATION AREA



**BASIS OF BEARING:**

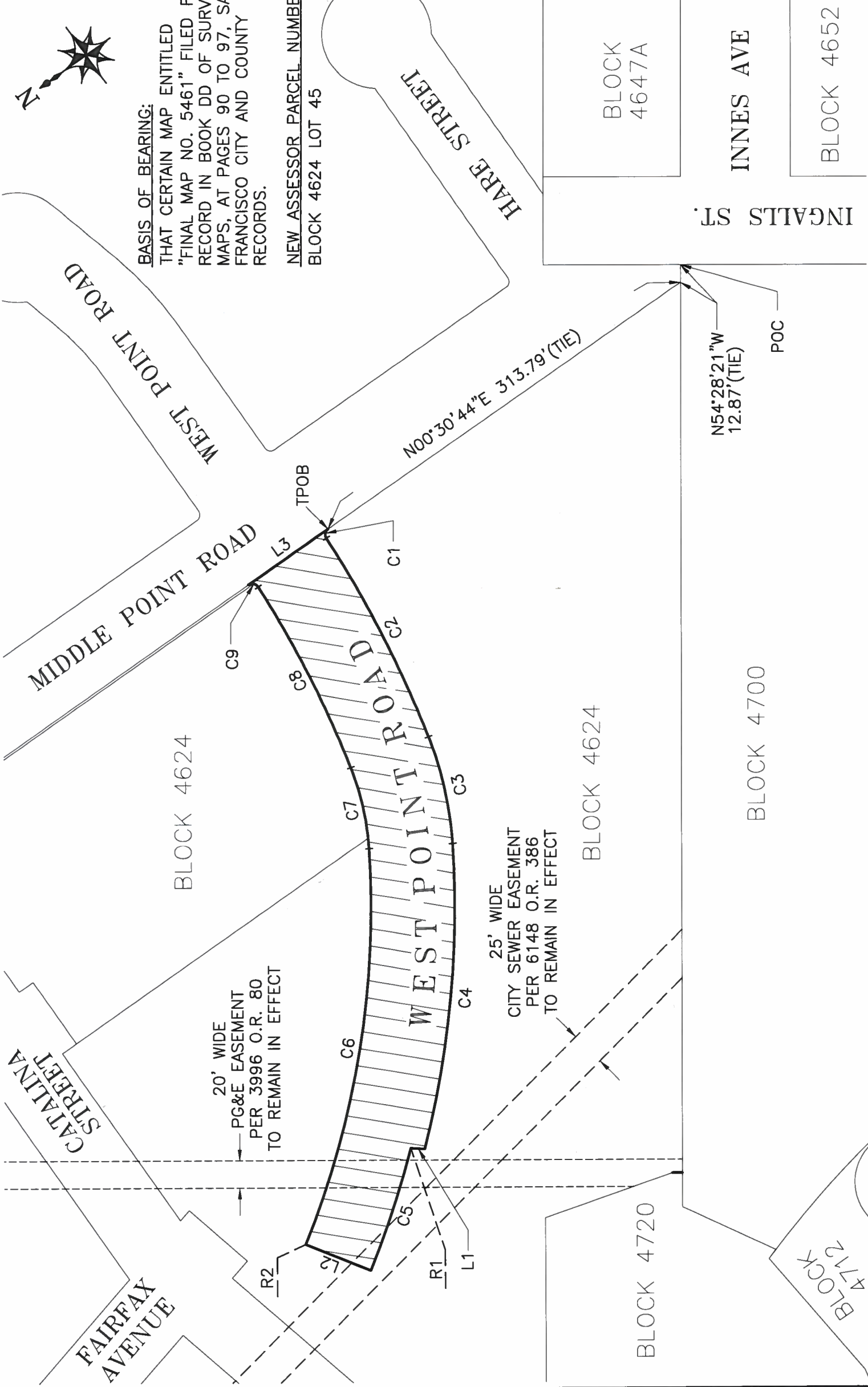
THAT CERTAIN MAP ENTITLED "FINAL MAP NO. 5461" FILED FOR RECORD IN BOOK DD OF SURVEY MAPS, AT PAGES 90 TO 97, SAN FRANCISCO CITY AND COUNTY RECORDS.

NEW ASSESSOR PARCEL NUMBER  
BLOCK 4624 LOT 45

RADIAL BEARING TABLE		
RADIAL	BEARING	RADIUS
L1	S50°00'47"W	708.00'
L2	S57°37'02"W	657.00'

LINE TABLE		
LINE #	BEARING	DISTANCE
L1	N38°12'41"E	10.21'
L2	N57°38'32"E	51.00'
L3	S0°30'44"W	71.07'

CURVE TABLE			
CURVE #	RADIUS	DELTA	LENGTH
C1	5.00'	87°37'14"	7.65'
C2	838.00'	11°09'42"	163.25'
C3	257.00'	17°50'18"	80.01'
C4	718.00'	17°57'17"	225.00'
C5	708.00'	7°36'22"	93.99'
C6	657.00'	25°43'32"	294.99'
C7	196.00'	17°50'18"	61.02'
C8	777.00'	10°56'34"	148.40'
C9	5.00'	92°35'54"	8.08'



<b>CITY AND COUNTY OF SAN FRANCISCO</b>		<b>DEPARTMENT OF PUBLIC WORKS</b>	
<b>STREET VACATION OF A PORTION OF WEST POINT ROAD</b>			
REFERENCES:	DD MAPS 90-97 SUR MAP NO. 1009	APPROVED:	BRUCE R. STORRS CITY & COUNTY SURVEYOR
		BY	DATE
		DRAWN	12/18/13
		CHECKED	12/13/13
		APPROVED	DATE
		SCALE: 1"=80'	SHEET: 1 OF 1
		FILE	SUR 2013-02
		CHANGE	