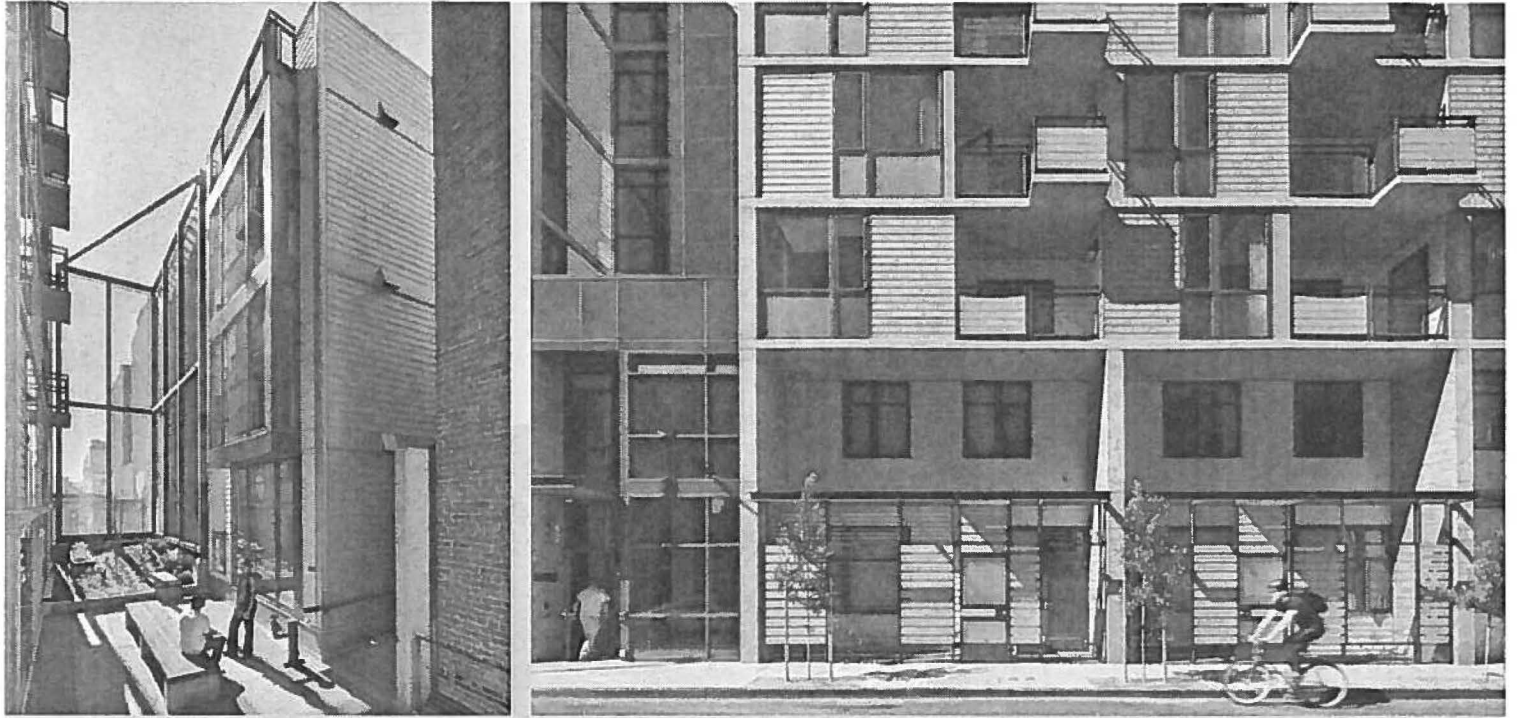


474 Natoma, San Francisco, CA



On a site vacant since the 1989 Loma Prieta earthquake, 474 Natoma is the newest addition to San Francisco's SOMA Redevelopment Area.

Affordable Units / Total Units: 60 / 60
Original Project Value: \$32,000,000

474 Natoma is a high-density residential development that provides much needed new affordable urban homes with a mix of 60 one-, two- and three-bedroom apartments. Amenities include a community room, laundry facilities, and a top floor landscaped terrace and community garden which provide additional sunny and secure outdoor areas with city views.

The nine-story building design incorporates sustainable building strategies to achieve the equivalent of GreenPoint Rated certification, and it includes a public artwork installation on the exterior along the length of the elevator shaft. The development aims to act as a catalyst for neighborhood revitalization along the 6th Street corridor.

Architects: Saida + Sullivan Design Partners and Leddy Maytum Stacy Architects

General Contractor: Nibbi Brothers

Financial Partners: San Francisco Redevelopment Agency, Bank of America

