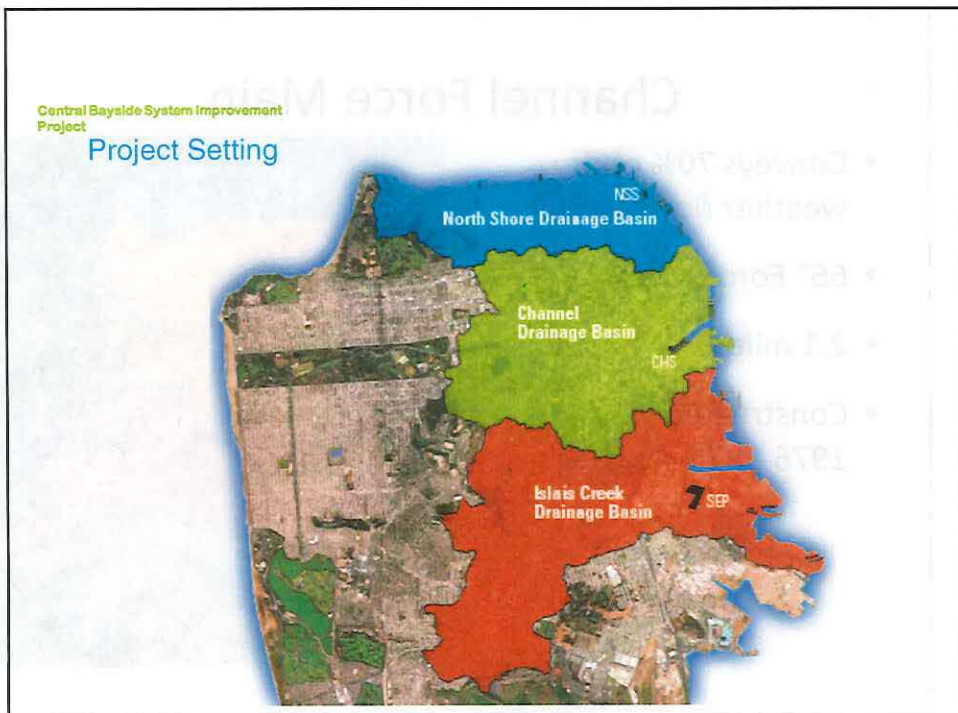
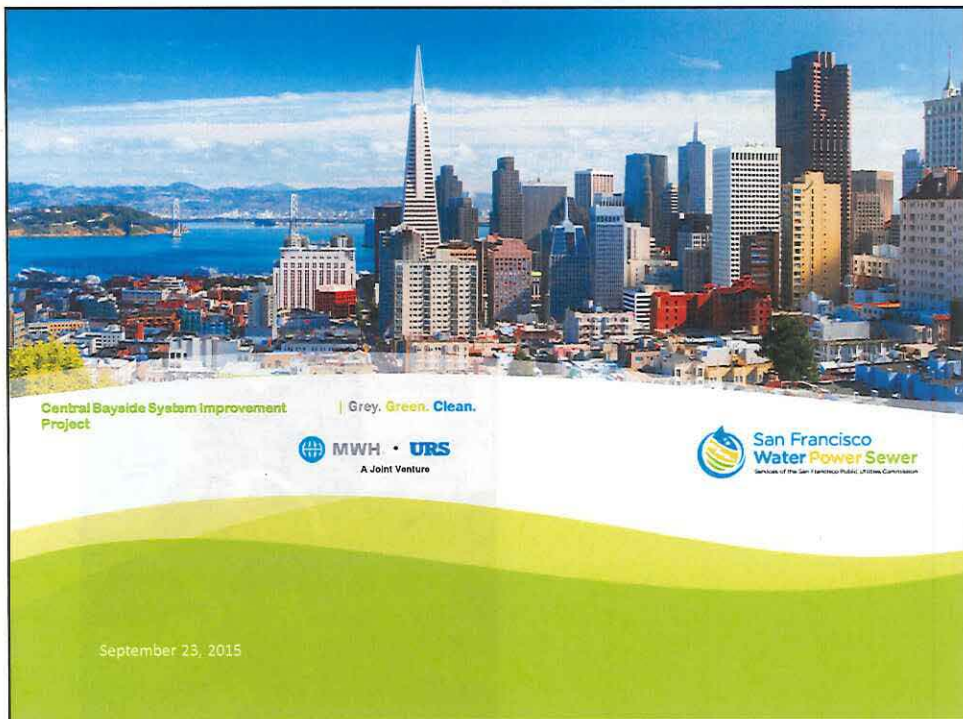
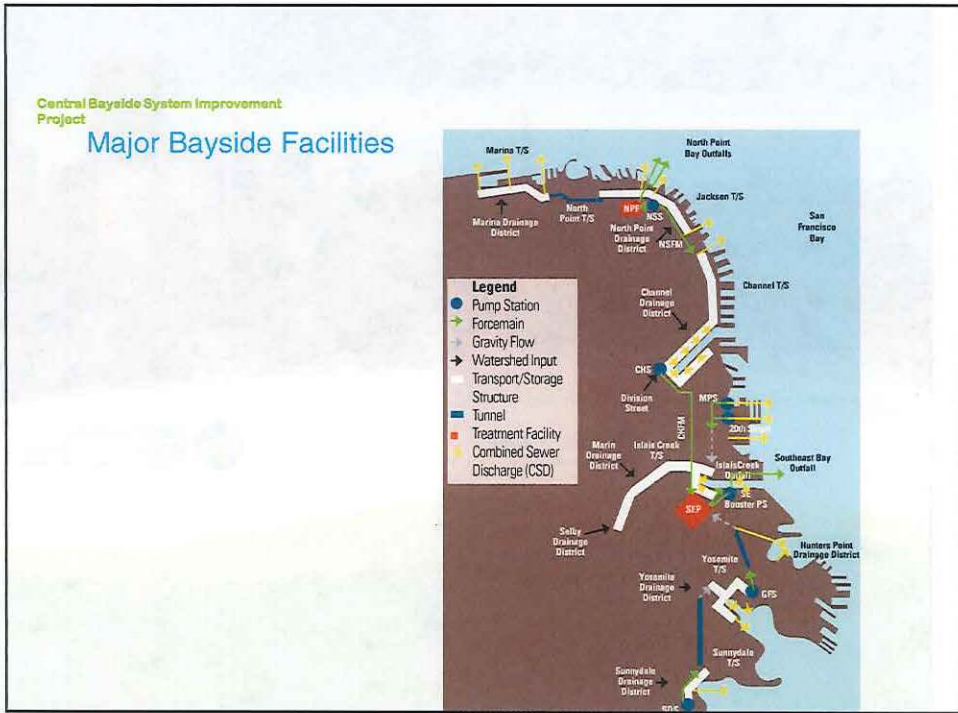


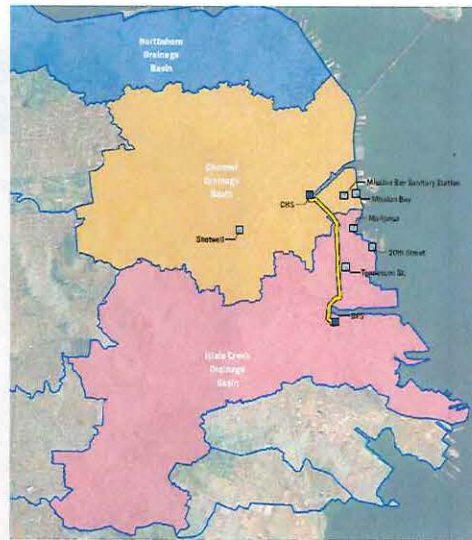
File # 150833
Received in Committee 9/22/2015
9/23/15
J.W.





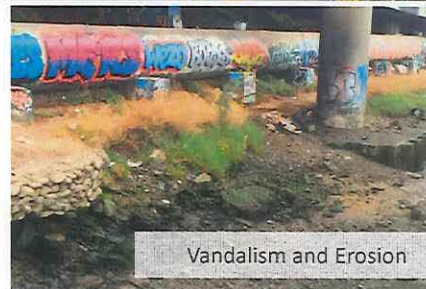
Channel Force Main

- Conveys 70% of dry weather flows to SEP
- 66" Force Main
- 2.1 miles
- Constructed 1976-1978 (37 yrs old)



Channel Force Main Vulnerabilities

- Damage from:
 - earthquakes
 - construction activities
 - settling
 - vandalism
- Condition unknown: Cannot take pipe out of service to inspect
- No alternative way to convey flows to SEP



Project Drivers

- Redundancy
- Seismic Reliability
- Regulatory Compliance
- Flexibility to Respond to Future Conditions
- Potential CSD Reduction
- Sea Level Rise



