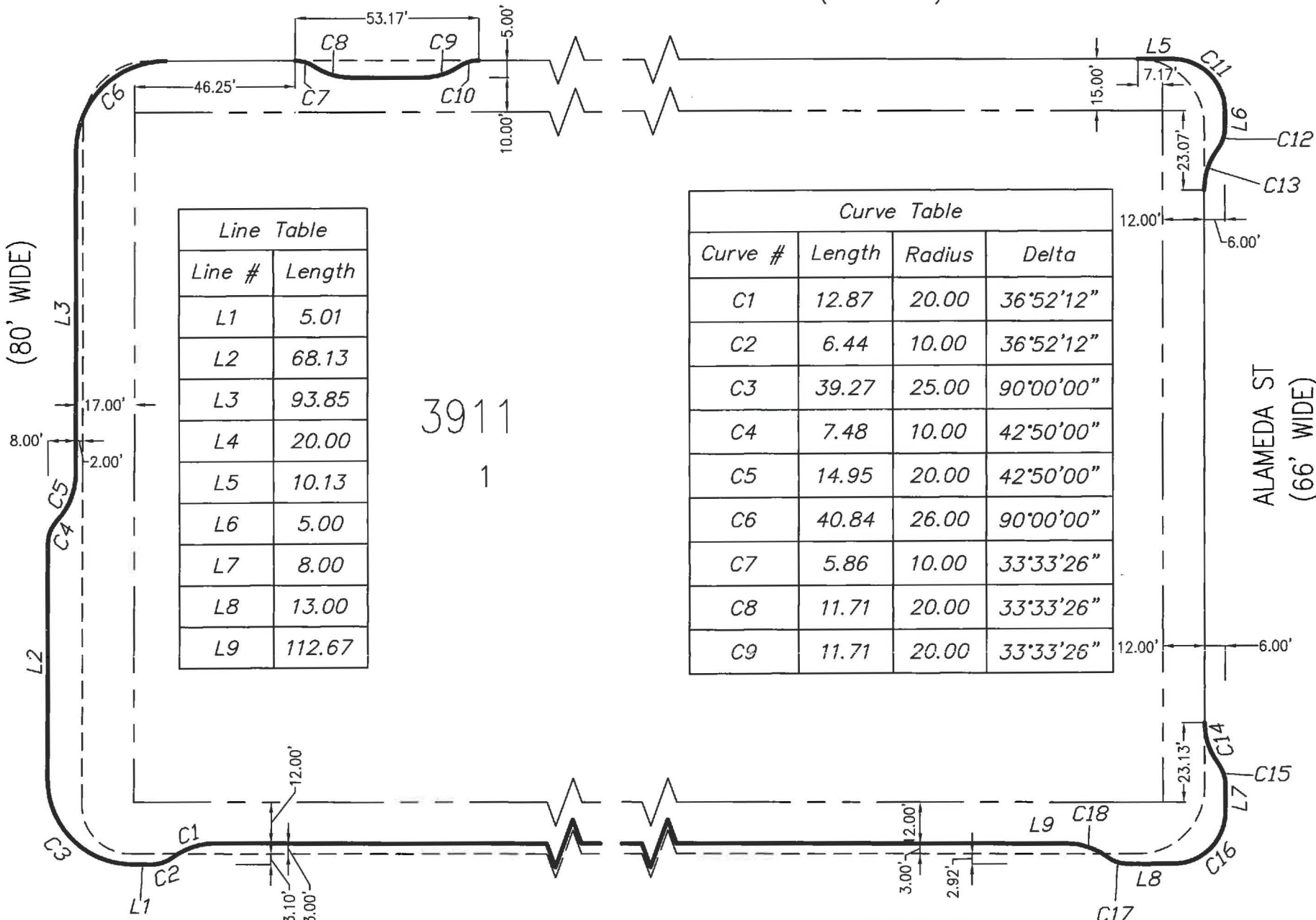


RHODE ISLAND ST  
(80' WIDE)



DIVISION ST  
(80' WIDE)



Line #	Length
L1	5.01
L2	68.13
L3	93.85
L4	20.00
L5	10.13
L6	5.00
L7	8.00
L8	13.00
L9	112.67

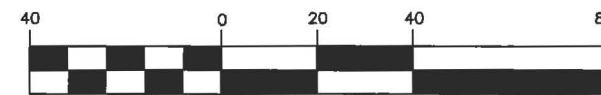
Curve #	Length	Radius	Delta
C1	12.87	20.00	36°52'12"
C2	6.44	10.00	36°52'12"
C3	39.27	25.00	90°00'00"
C4	7.48	10.00	42°50'00"
C5	14.95	20.00	42°50'00"
C6	40.84	26.00	90°00'00"
C7	5.86	10.00	33°33'26"
C8	11.71	20.00	33°33'26"
C9	11.71	20.00	33°33'26"

Curve #	Length	Radius	Delta
C10	5.86	10.00	33°33'26"
C11	23.56	15.00	90°00'00"
C12	6.44	10.00	36°52'12"
C13	12.87	20.00	36°52'12"
C14	12.87	20.00	36°52'12"
C15	6.44	10.00	36°52'12"
C16	23.56	15.00	90°00'00"
C17	6.44	10.00	36°52'12"
C18	12.87	20.00	36°52'12"

LEGEND

- NEW CURB LINE
- PROPERTY LINE
- EXISTING OFFICIAL CURB TO REMAIN
- EXISTING OFFICIAL CURB TO BE REMOVED

GRAPHIC SCALE



( IN FEET )  
1 inch = 40 ft.

REFERENCES:  
GM 286



APPROVED:

*Bruce R. Storrs*

BRUCE R. STORRS  
CITY & COUNTY SURVEYOR

11/25/15  
DATE

CITY AND COUNTY OF SAN FRANCISCO  
DEPARTMENT OF PUBLIC WORKS

OFFICIAL SIDEWALK CHANGES FRONTING ASSESSOR'S BLOCK 3911 LOT 001, ALONG DIVISION ST, RHODE ISLAND ST, ALAMEDA ST, AND HENRY ADAMS ST.

FILE:  
Q-20-820

SHEET 1 OF 1

SCALE: 1:40

CHANGE