

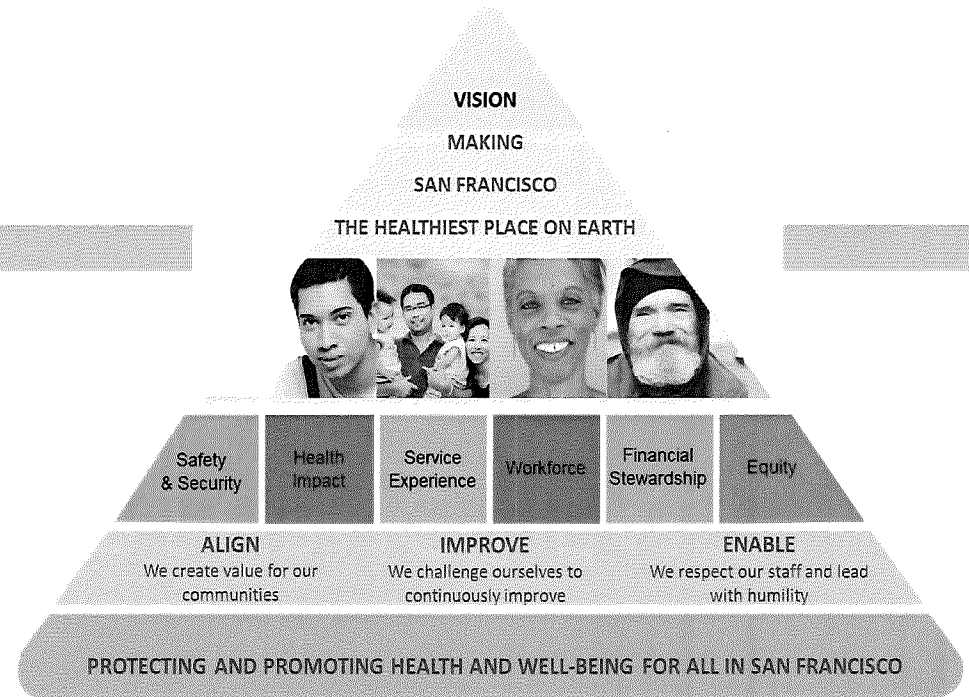
DEPARTMENT OF PUBLIC HEALTH FY 2019-2021 BUDGET

June 14, 2019

6/14/19

Mission and Vision

2



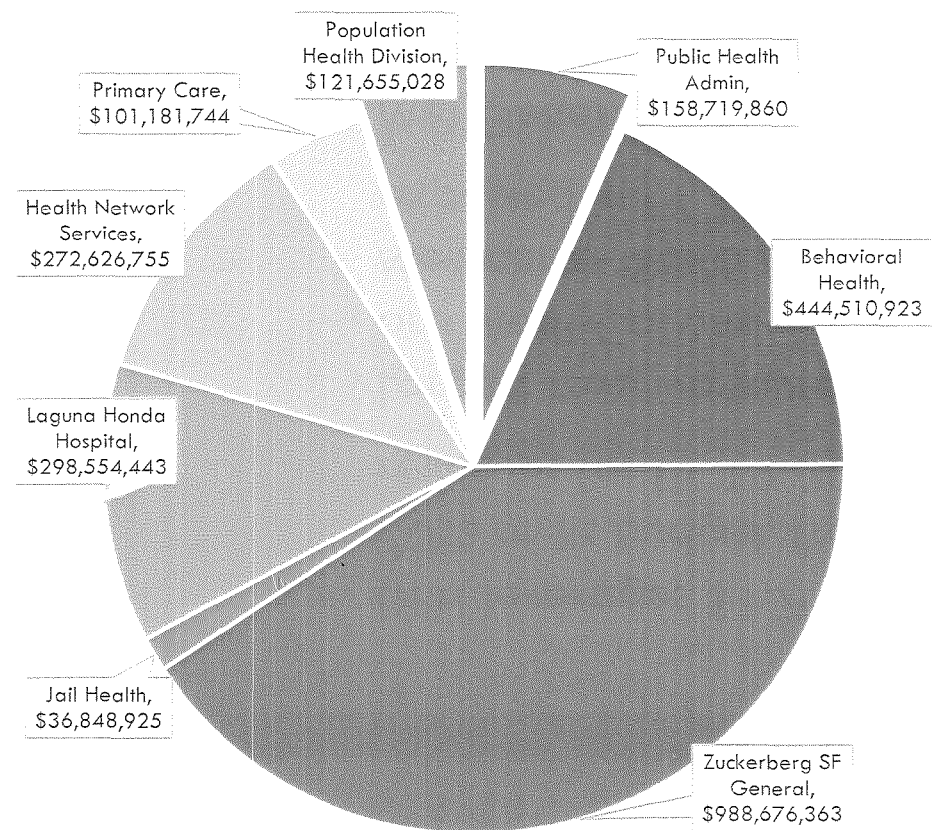
Strategic Goals for FY 2019-2021 include:

- ❑ Focusing on Financial Stewardship
- ❑ Providing healthcare services for vulnerable residents
- ❑ Increasing workforce and health equity
- ❑ Improving data systems and analytics

DPH's Proposed Budget is \$2.4 Billion

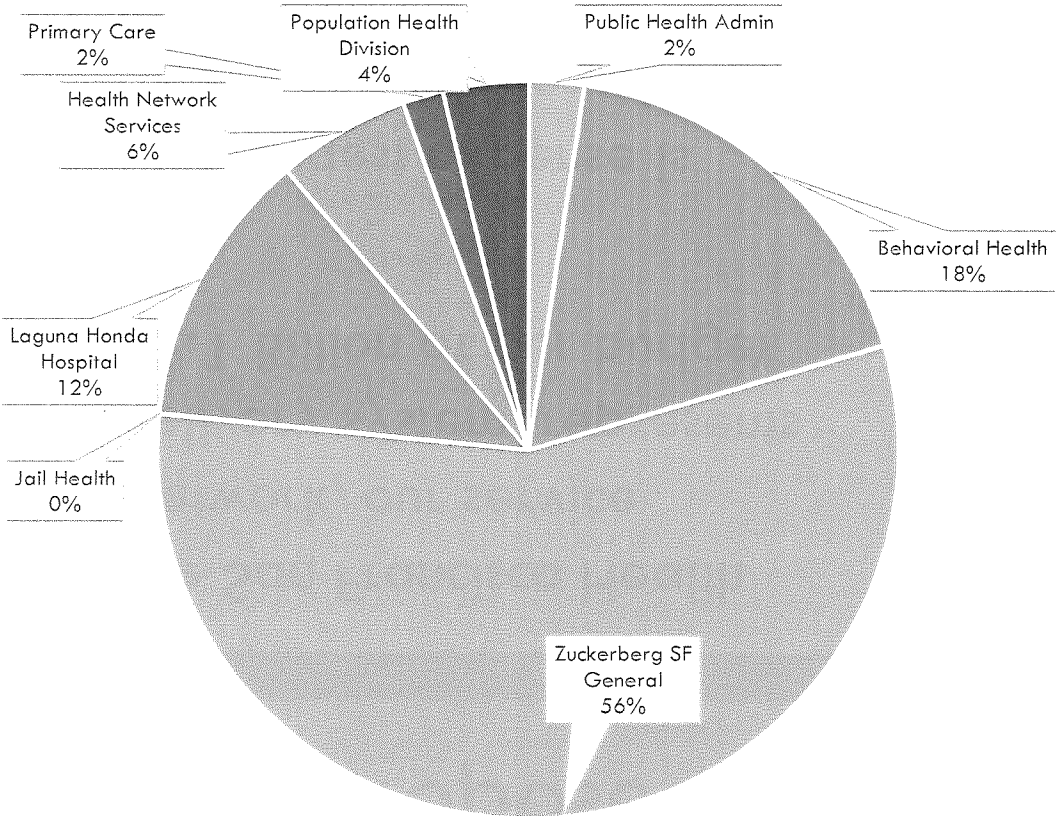
3

- The San Francisco Health Network, our service delivery system, represents \$2.1 Billion of our budget
- Our largest expense is salary and fringes which is \$1.3 billion followed by \$792 million for professional services



Revenues & Financial Stewardship

19-20 DPH Revenues by Division



- DPH leverages \$1.7 billion, 70% of its budget, from revenues for FY 19-20
- Largest revenue sources are Medi-Cal and Medicare - \$875 M expected in FY 18-19
- Met General Fund reduction targets through increased revenues – no service reductions
- State and federal policy changes can impact future revenues

Budgeted Positions and Filled Positions

5

- 6,866 Budgeted FTE 2018-2019
- 6,653 (97%) filled
- New FTE for FY 19-20:
 - ❑ 2.0 FTE - Office of Equity
 - ❑ 2.0 FTE - Mental Health Reform
 - ❑ 3.0 FTE - Contracts staffing
 - ❑ 1.0 FTE –Behavioral health clinician for Healthy Streets Operations Center
 - ❑ 1.0 FTE – Grant funded social worker to support treatment & reduce recidivism
 - ❑ 1.0 FTE - Liaison for families and victims of violence
 - ❑ 1.0 FTE – Healthworker IV to coordinate care in medical homes
 - ❑ 1.0 FTE – Project manager for primary care capital renovations
 - ❑ 2.0 FTE - Dental hygienists to apply oral sealants

Serving Vulnerable Populations:

Behavioral Health Investments - \$50 M over 2 years

6

- Over 200 new BH Treatment Beds
 - 52 residential treatment beds
 - 64 behavioral health respite and assisted living beds
 - 72 substance use residential step-down units
 - 14 MH rehabilitation beds at St. Mary's Healing Center
- \$4.5 M in one-time funding to preserve existing residential services
- \$0.5 M ongoing to maintain sufficient payments rates for residential care
- \$0.8 M for Shelter Health for two years
- \$0.5 M ongoing for Medical Respite/Sobering Center operations
- \$0.87 M for Mental Health Reform Project

Increasing Workforce and Health Equity – New Office of Equity

- Improve community and staff engagement and inclusion
- Establish Department-wide equity measures and outcomes
- Align and coordinate Department's work with other city departments
- Consultation and oversight of racial equity plans in all areas
- Oversight of executive workgroup setting department equity strategy
- Oversight of staff workgroup aligning equity implementation
- Development of a health equity skills fellowship with support from GARE to increase staff expertise
- Policy development to advance equity workplace culture, community engagement and service quality

Increasing Workforce and Health Equity

– Continuing Initiatives

Black African American Health Initiative:

- Disparity-closure goals for all clinical sections – oversight by new equity staff
- Continued training on cross-racial communication for managers

HopeSF Community Wellness Program

- Expanded linkage between HopeSF sites and Primary Care, Behavioral Health and Population Health
- Opening the Alice Griffith and Potrero Hill sites with additional nursing and outreach staff

Trauma Informed System (TIS)

- Promotes organizational change by understanding the effects of stress & trauma on individuals, families, communities and organizations

Investing in Data Systems and Analytics

9

- After years of planning, we will go live with Wave 1 of Epic, our new integrated Electronic Health Record on August 3rd
- This transformative replacement will be a single system that combines clinical, billing and reporting functions
- Benefits include:
 - Improved and shared access to clinical data and reporting to improve patient care and outcomes
 - Improved clinical billing by unifying systems, improving efficiency and increasing accuracy
 - Single system replaces multiple legacy systems

Performance Measures

DPH uses a variety of performance measures to assess quality of care, safety, care experience and satisfaction, workforce, financial stewardship and equity.

- **Promoting Health**
 - New HIV diagnosis
 - Hep C treatment
 - Access to healthy foods
- **Research**
 - Meth treatment
 - Innovations in HIV Prevention
- **Client Satisfaction**
 - Mental health and substance use treatment clients who are satisfied with quality of services
- **Clinical Outcomes**
 - Black/African American patients with blood pressure control
 - Assisted Outpatient Treatment clients who avoided hospitalization and jail
 - Buprenorphine starts
- **Standard Outcome Objectives in Behavioral Health Contracts**
 - Child and Adolescent Needs and Strength Assessment
 - Adult Needs and Strengths Assessment
- **Medi-Cal Value Based Payments**
 - 30 Day & 7 Day All Cause Readmission Rates & Discharges at ZSFG

Thank You

11

Questions?