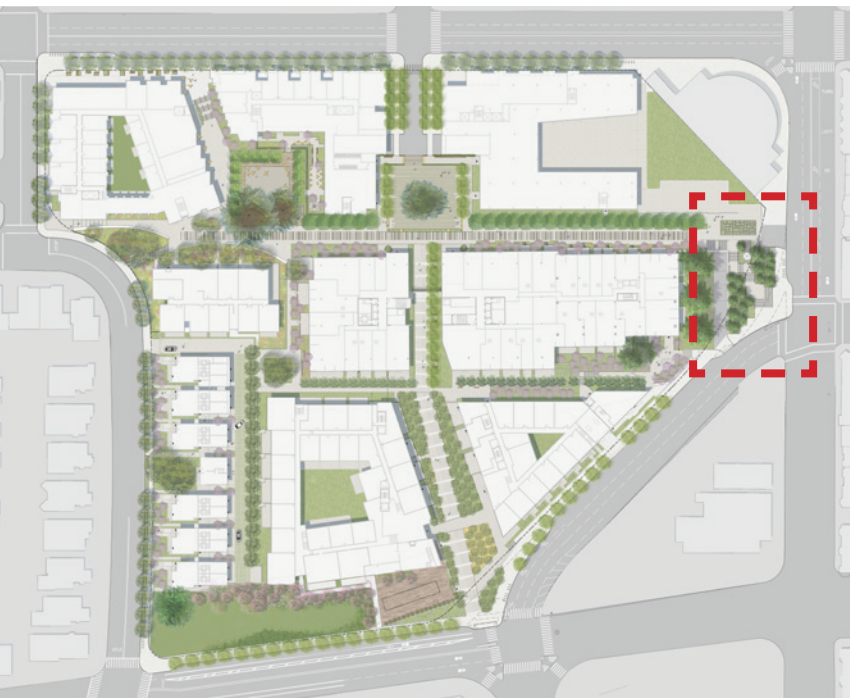


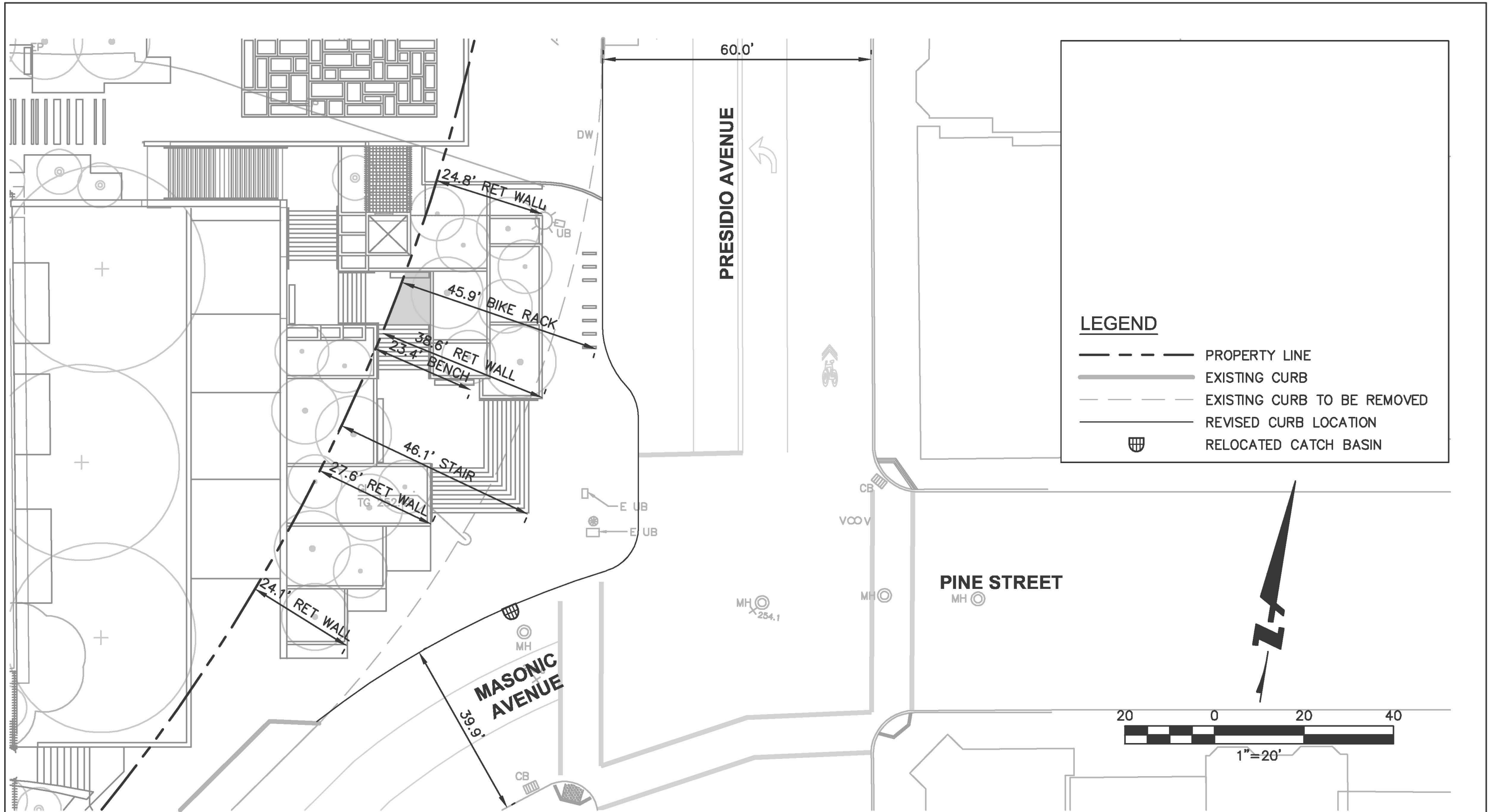


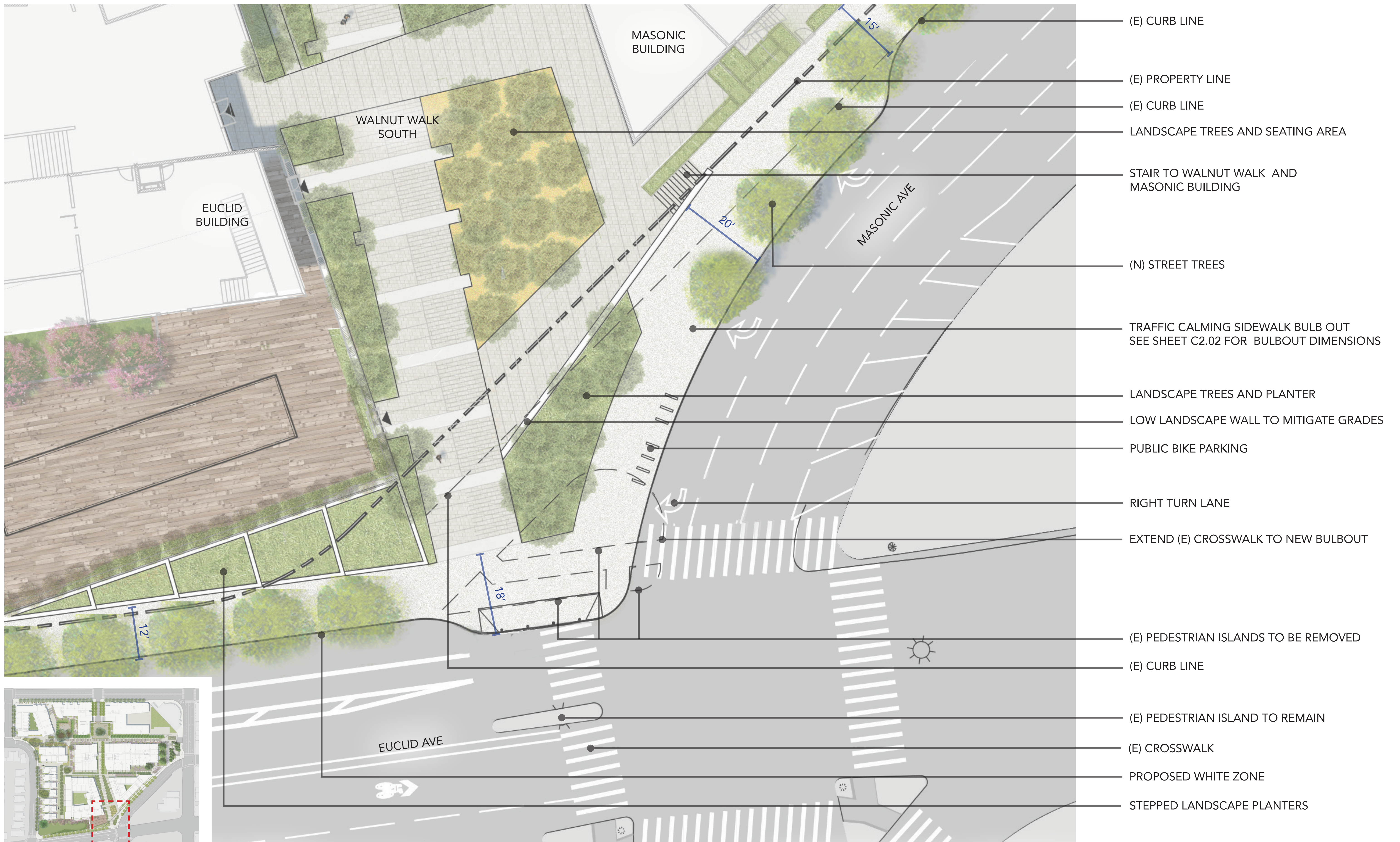
- PLANTING AND SEATING AT THE OVERLOOK
- (E) PROPERTY LINE
- MAYFAIR WALK PEDESTRIAN PROMENADE
- GARAGE ENTRANCE AT (E) DRIVEWAY INGRESS/EGRESS FOR LOADING TRUCKS INGRESS ONLY FOR AUTOS
- ELEVATED STEEL WALKWAY TO ELEVATOR
- ADA ELEVATOR
- (E) CURB LINE
- PUBLIC BIKE PARKING
- STEPPED PLANTERS WITH TREES
- PINE STREET STEPS PUBLIC STAIR TO MAYFAIR WALK
- PROPOSED CROSSWALK
- (E) PEDESTRIAN ISLAND AND SLIP LANE TO BE REMOVED
- TRAFFIC CALMING SIDEWALK BULB OUT SEE SHEET C2.02 FOR BULBOUT DIMENSIONS
- (E) CURB LINE
- GARAGE EGRESS FOR AUTOS ONLY
- (E) MATURE REDWOOD TREES
- PROPOSED WHITE ZONE



3333 CALIFORNIA STREET SAN FRANCISCO, CA

ENLARGED PLAN - PINE STREET STEPS STREETSCAPE IMPROVEMENTS



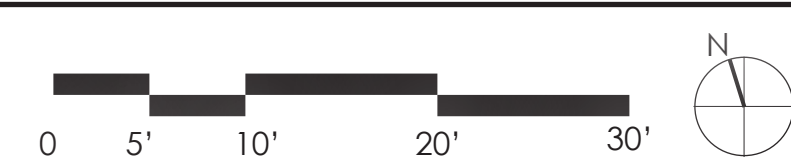


3333 CALIFORNIA STREET SAN FRANCISCO, CA

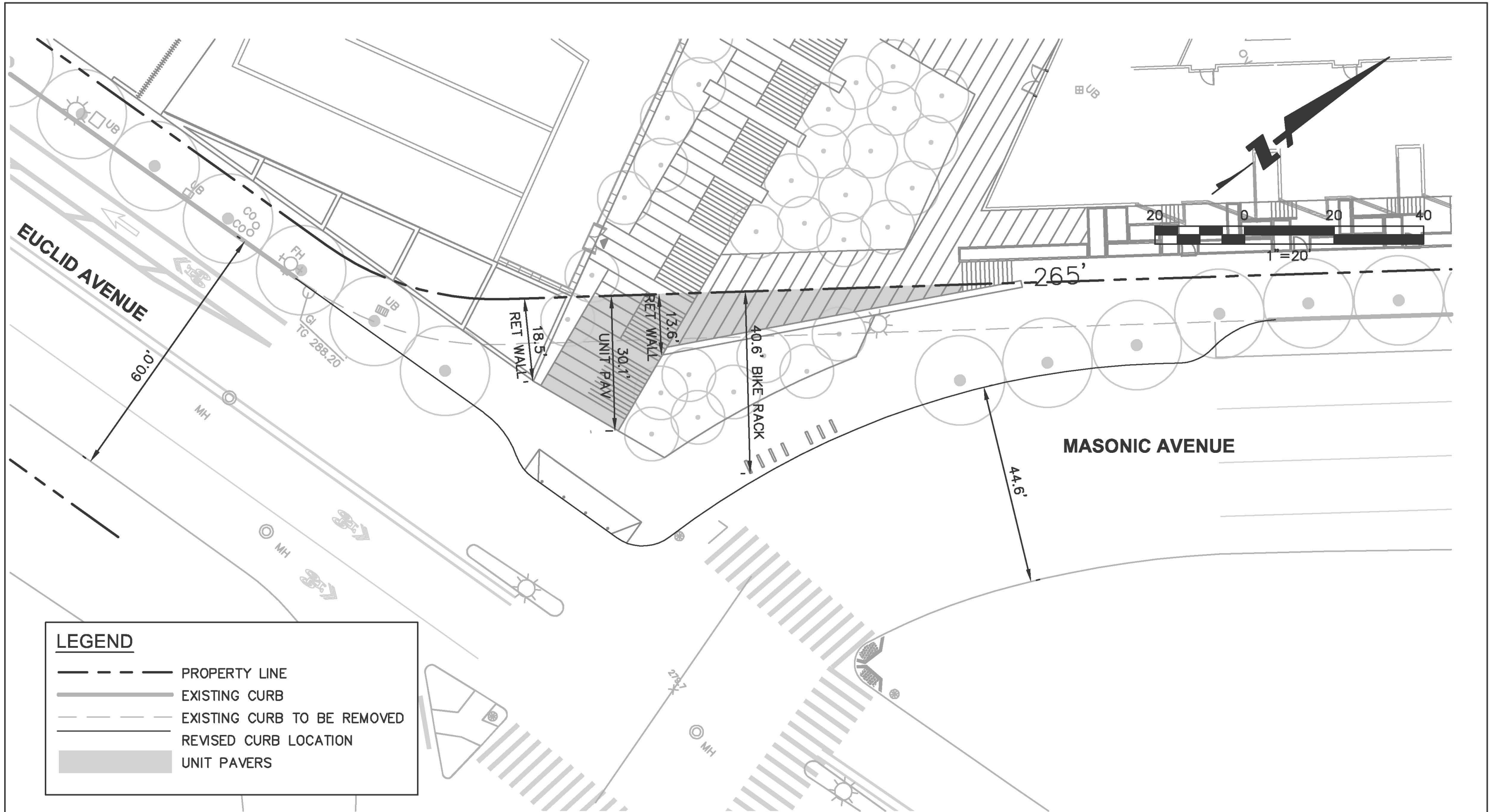
ENLARGED PLAN - CORNER PLAZA STREETSCAPE IMPROVEMENTS

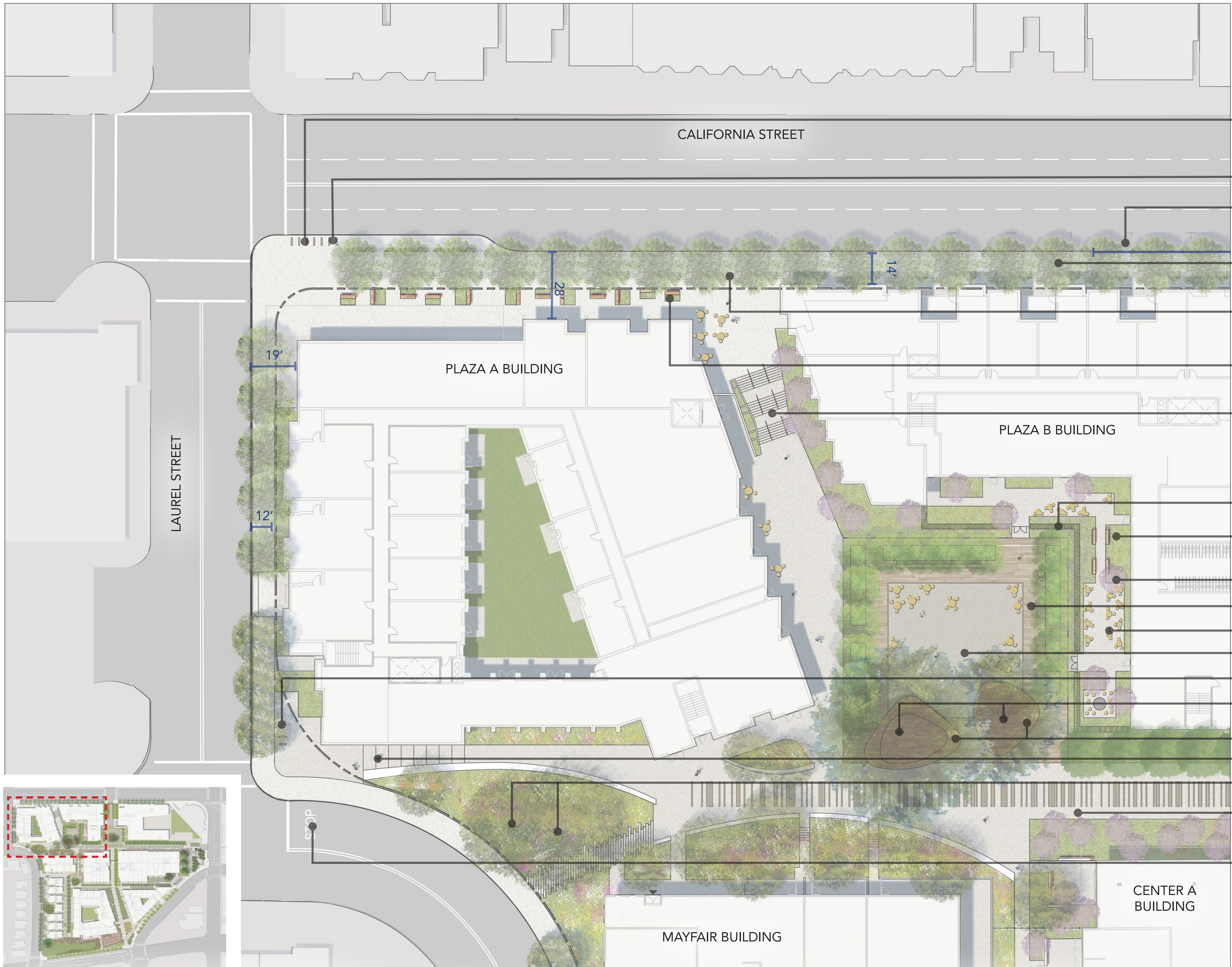


07.03.2019
PLANNING APPLICATION SUBMITTAL



L2.04

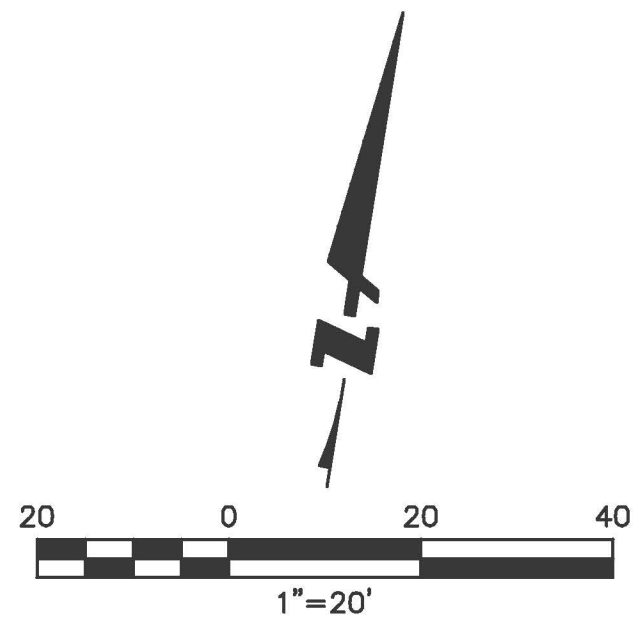




- EXISTING TRAFFIC CALMING BULBOUT AND MUNI BUS STOP
SEE SHEET C2.02 FOR DIMENSIONS
- BIKE PARKING
- YELLOW ZONE (60' IN TOTAL LENGTH)
- (N) OLIVE STREET TREES AT LAUREL VILLAGE CONTINUATION
- CONCRETE SIDEWALKS AT LAUREL VILLAGE CONTINUATION
- PLANTERS AND SEATING AT LAUREL VILLAGE CONTINUATION
- STAIRS TO CALIFORNIA STREET AND CYPRESS SQUARE
- PRIVACY HEDGE AND PLANTINGS
- PLANTED GARDENS AND BENCHES
- FLOWERING TREES
- WOOD DECKING
- PRIVATE, FLEXIBLE SPACE AT ENTRANCE
- PAVED SQUARE
- BIKE PARKING
- EXISTING MATURE MONTEREY CYPRESS TREES
- WOOD DECK
- STEPS TO LAUREL STREET AND MAYFAIR WALK
- EXISTING MATURE OAK TREES FRAMED BY SEATWALL
- MAYFAIR WALK
PEDESTRIAN PROMENADE
- RESTRIPE STOP AT PROPOSED CURB LINE REVISION
SEE SHEET C2.02 FOR DIMENSIONS

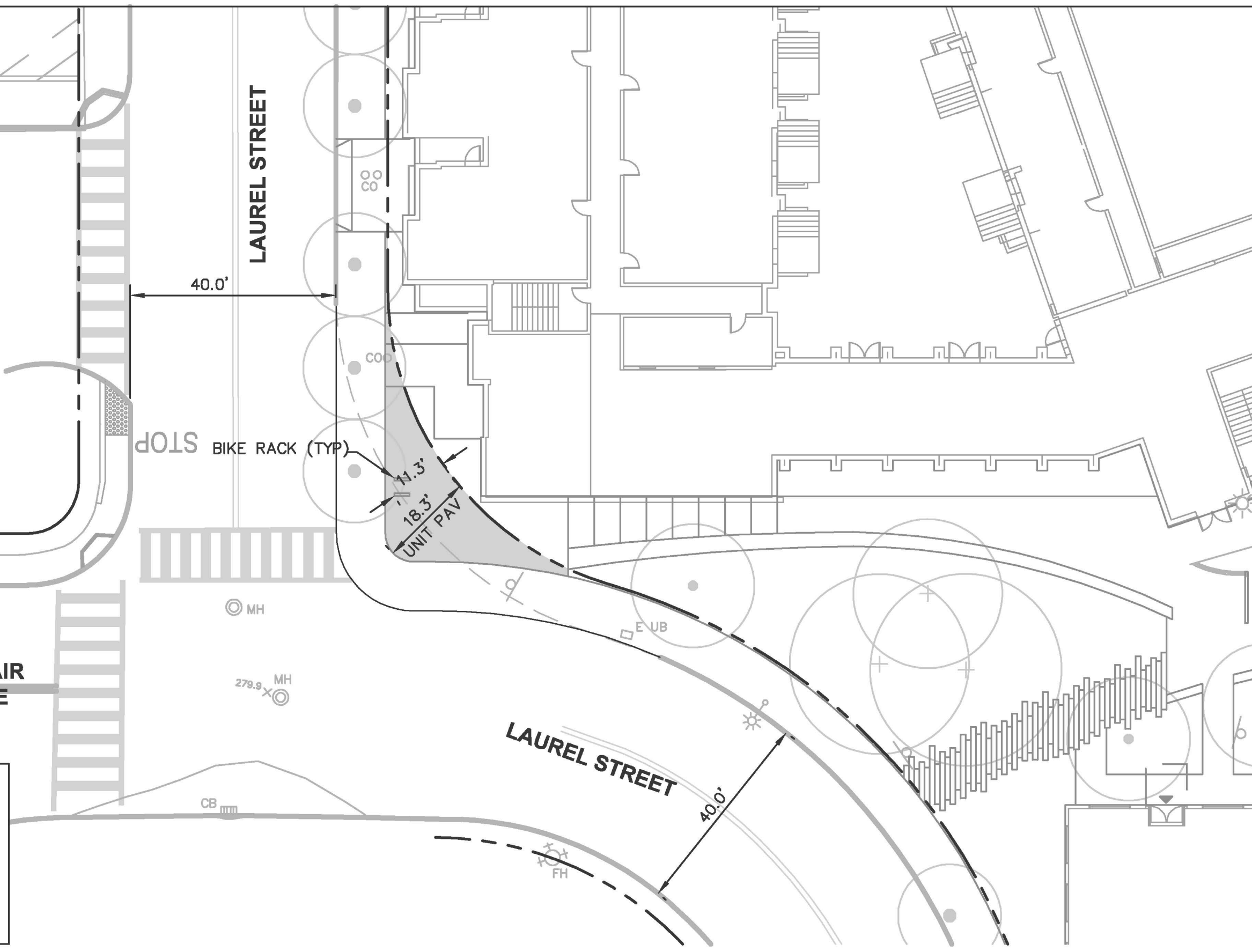
3333 CALIFORNIA STREET SAN FRANCISCO, CA

ENLARGED PLAN - CYPRESS SQUARE/CALIFORNIA STREETSCAPE IMPROVEMENTS



LEGEND

PROPERTY LINE

EXISTING CURB

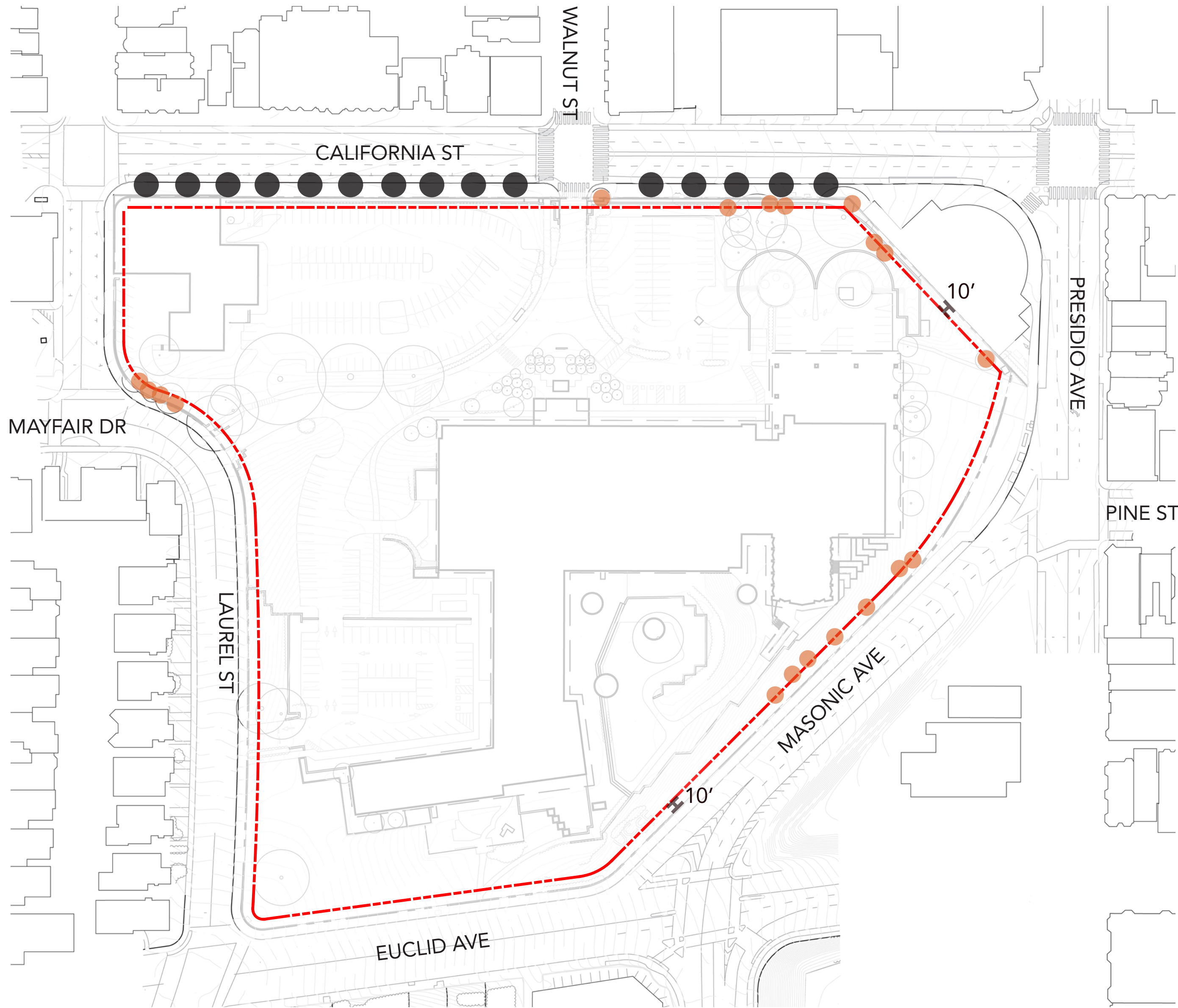
05/22/2019

MAJOR ENCROACHMENT PERMIT - MAYFAIR AND LAUREL STREET
3333 CALIFORNIA STREET, SAN FRANCISCO, CA

**BKF** 100+
YEARS

ENGINEERS . SURVEYORS . PLANNERS
4670 WILLOW RD,
SUITE 250
PLEASANTON, CA 94588

(925) 396-7700
www.bkf.com
JOB NO.: C20120226

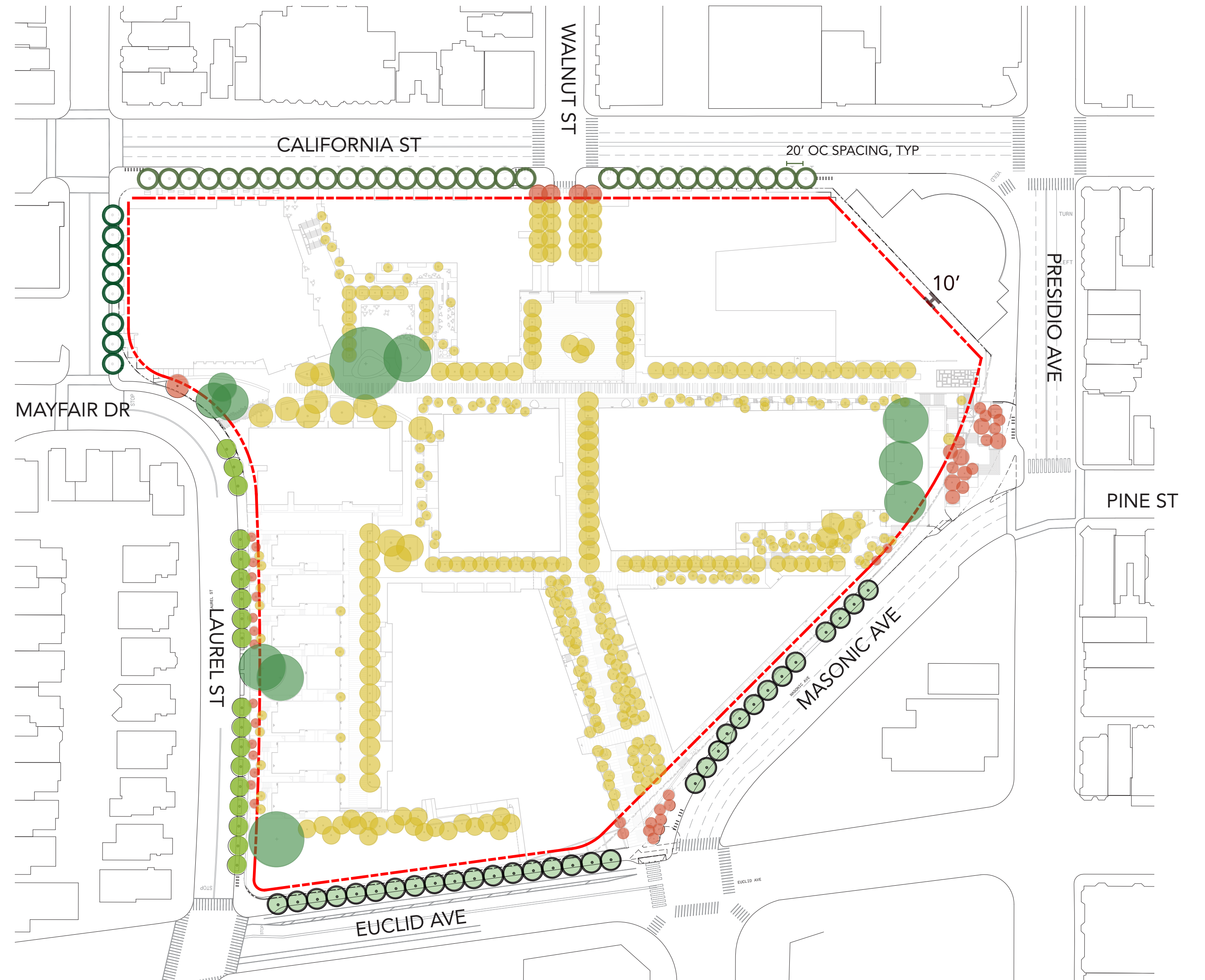


EXISTING TREES

- EXISTING STREET TREES (15)
*IN FRONT OF THE PROPERTY LINE
TO BE REMOVED
- EXISTING SIGNIFICANT TREES
TO BE REMOVED (19)

* SIGNIFICANT TREE DEFINITION:

A TREE:
(1) ON PROPERTY UNDER THE JURISDICTION OF THE DEPARTMENT OF PUBLIC WORKS
OR (2) ON PRIVATELY OWNED-PROPERTY WITH ANY PORTION OF ITS TRUNK WITHIN 10 FEET OF THE PUBLIC RIGHT-OF-WAY,
AND (3) THAT SATISFIES AT LEAST ONE OF THE FOLLOWING CRITERIA:
(A) A DIAMETER AT BREAST HEIGHT (DBH) IN EXCESS OF TWELVE (12) INCHES,
(B) A HEIGHT IN EXCESS OF TWENTY (20) FEET,
OR (C) A CANOPY IN EXCESS OF FIFTEEN (15) FEET.



PROPOSED TREES

- PROPOSED STREET TREES AT CALIFORNIA ST. (39)
FRUITLESS OLIVE 'OLEA EUROPAEA SWAN HILL'
- PROPOSED STREET TREES (31)
GINKGO 'GINKGO BILOBA PRINCETON SENTRY'
- PROPOSED STREET TREES (18)
AESCULUS CARNEA
- PROPOSED TREES WITHIN 10'
OF FEET OF THE PUBLIC RIGHT-OF-WAY (49)
- PROPOSED TREES (364)
- KEY TREES TO BE PRESERVED (11)

3333 CALIFORNIA STREET SAN FRANCISCO, CA

SITE DIAGRAM - TREES

L1.03A