

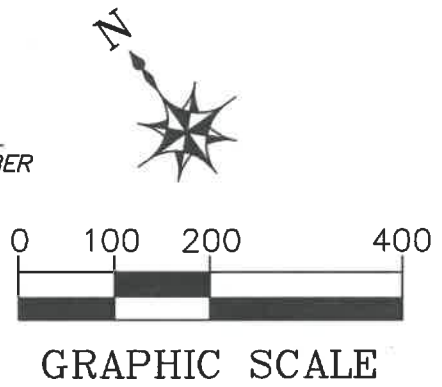


LEGEND

- APN ASSESSOR'S PARCEL NUMBER
- POB POINT OF BEGINNING
- P. PARCEL
- (R) RADIAL BEARING
-  STREET RIGHT OF WAY AREA TO BE VACATED AND RETAINED BY THE CITY
-  STREET RIGHT OF WAY AREA TO BE VACATED AND CONVEYED



NOTES

1. ALL ANGLES ARE 90 DEGREES UNLESS NOTED OTHERWISE.
2. DIMENSIONS ARE IN FEET AND DECIMALS THEREOF.

MAP REFERENCES

1. RECORD OF SURVEY NO. 8059 RECORDED AUGUST 15, 2017 IN BOOK GG OF SURVEY MAPS AT PAGES 182-183, SAN FRANCISCO COUNTY RECORDS.
2. "MAP OF EAST INDIA BASIN BUSINESS PARK" FILED MAY 4, 1988 IN BOOK "Y" OF MAPS, AT PAGES 18 AND 19, SAN FRANCISCO COUNTY RECORDS.
3. "MAP OF LANDS TRANSFERRED IN TRUST TO THE CITY AND COUNTY OF SAN FRANCISCO", FILED IN BOOK "W" OF MAPS, PAGES 66 THROUGH 72, SAN FRANCISCO COUNTY RECORDS.

ARELIIOUS WALKER DRIVE NOTE

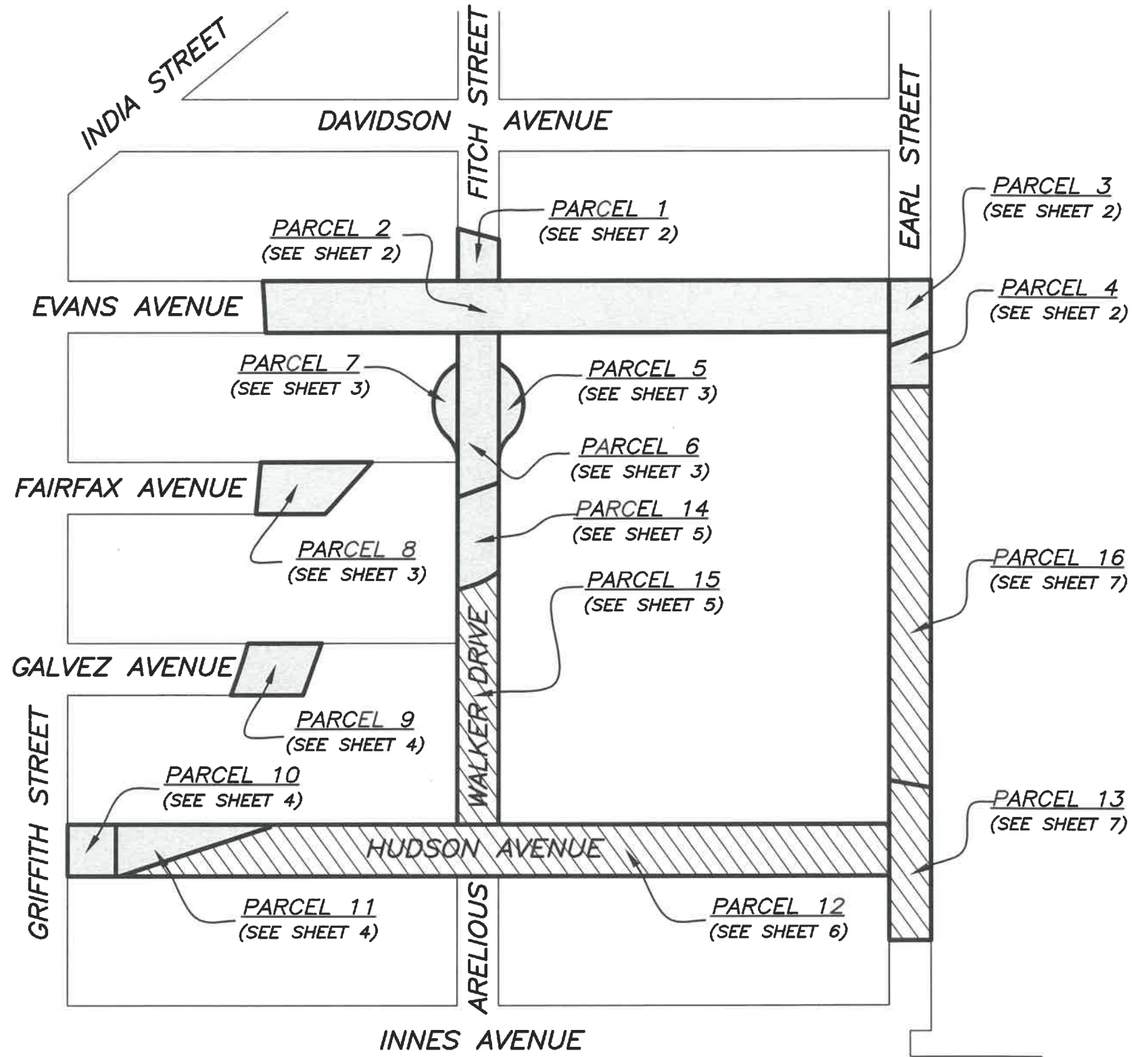
FITCH STREET WAS RENAMED ARELIIOUS WALKER DRIVE PER RESOLUTION NO. 1012-95 OF THE BOARD OF SUPERVISORS FOR THE CITY AND COUNTY OF SAN FRANCISCO, APPROVED BY THE MAYOR, DECEMBER 7, 1995.

BASIS OF BEARINGS

THE NORTHEASTERLY LINE OF HUDSON AVENUE IS TAKEN TO BE N54°28'21"W FOR THE BASIS OF BEARINGS AS SHOWN ON "MAP OF EAST INDIA BASIN BUSINESS PARK" FILED MAY 4, 1988 IN BOOK "Y" OF MAPS, AT PAGES 18 AND 19, OFFICIAL RECORDS OF THE CITY AND COUNTY OF SAN FRANCISCO.

APN TABLE

| Parcel No. | Square Feet | APN |
|------------|-------------|----------|
| 1 | 4,602 | 4596-027 |
| 2 | 76,953 | 4607-026 |
| 3 | 5,835 | 4607-027 |
| 4 | 4,725 | 4607-028 |
| 5 | 3,460 | 4607-029 |
| 6 | 15,556 | 4607-030 |
| 7 | 3,460 | 4606-101 |
| 8 | 11,069 | 4606-102 |
| 9 | 8,859 | 4630-103 |
| 10 | 6,000 | 4630-102 |
| 11 | 10,154 | 4630-101 |
| 12 | 84,966 | 4631-004 |
| 13 | 15,454 | 4631-003 |
| 14 | 9,153 | 4620-003 |
| 15 | 23,931 | 4631-005 |
| 16 | 39,266 | 4631-006 |



APPROVED:


BRUCE R. STORRS
 CITY & COUNTY SURVEYOR

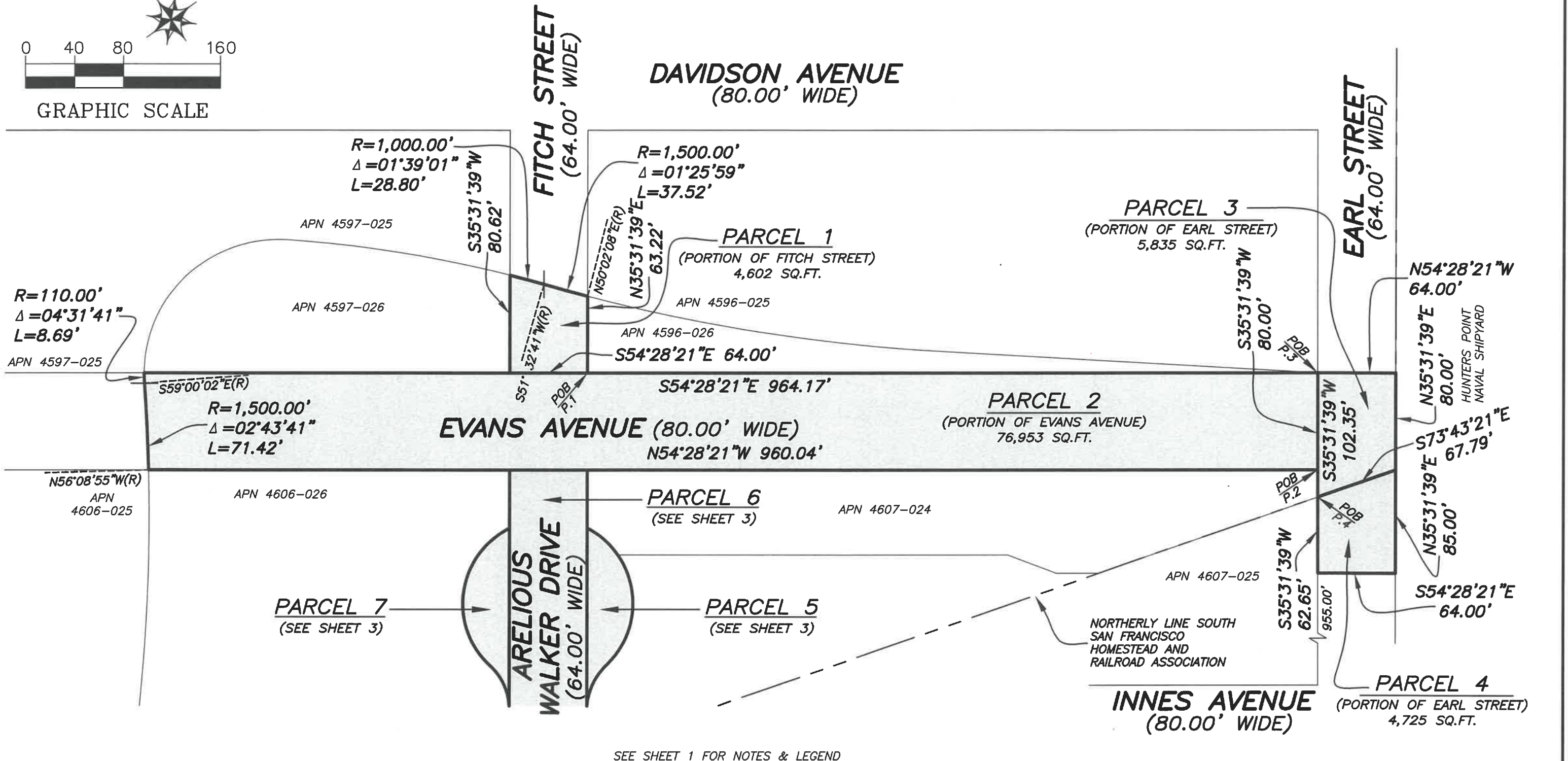
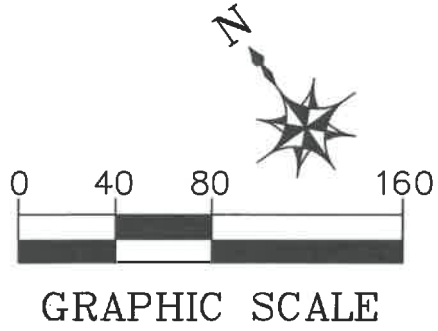
9/20/19

 DATE

CITY AND COUNTY OF SAN FRANCISCO PUBLIC WORKS
 SUBDIVISION AND MAPPING

MAP TITLE VACATION OF A PORTION OF ARELIIOUS WALKER DRIVE, HUDSON AVENUE, GALVEZ AVENUE, FAIRFAX AVENUE, EVANS AVENUE, FITCH STREET AND EARL STREET

| | | | |
|---------------------------|---------------------|---------------------|-----------------|
| FILE: SUR 2019-004 | SHEET 1 OF 7 | SCALE: 1:200 | REVISION |
|---------------------------|---------------------|---------------------|-----------------|



SEE SHEET 1 FOR NOTES & LEGEND



APPROVED:

See Page 1

BRUCE R. STORRS
CITY & COUNTY SURVEYOR

9/20/19

DATE

| | | | |
|---|--------------|--------------|-------------|
| CITY AND COUNTY OF SAN FRANCISCO PUBLIC WORKS SUBDIVISION AND MAPPING | | | |
| MAP TITLE VACATION OF A PORTION OF ARELIOS WALKER DRIVE, HUDSON AVENUE, GALVEZ AVENUE, FAIRFAX AVENUE, EVANS AVENUE, FITCH STREET AND EARL STREET | | | |
| FILE: | SUR 2019-004 | SHEET 2 OF 7 | SCALE: 1:80 |
| | | | REVISION |

S-8484 Street Vacation Exhibits.dwg

PARCEL 2
(SEE SHEET 2)

EVANS AVENUE (80.00' WIDE)

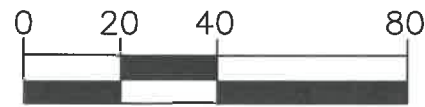
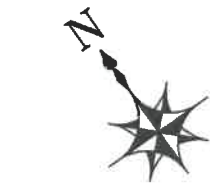
PARCEL 6

(PORTION OF ARELIOS WALKER DRIVE)
15,556 SQ.FT.
APN 4607-024

PARCEL 5

(PORTION OF ARELIOS WALKER DRIVE)
PARCEL "B" (Y MAPS 18)
3,460 SQ.FT.

PARCEL 7
(PORTION OF ARELIOS WALKER DRIVE)
PARCEL "A" (Y MAPS 18)
3,460 SQ.FT.



GRAPHIC SCALE

SEE SHEET 1 FOR NOTES & LEGEND

GRIFFITH STREET (64.00' WIDE)

APN 4606-025

APN 4606-026

APN 4606-100

APN 4607-025

R=50.00'
Δ=46°53'42"
L=40.92'

R=50.00'
Δ=46°53'42"
L=40.92'

R=70.00'
Δ=109°41'33"
L=134.02'

S54°28'21"E 296.66'

N54°28'21"W 170.83'

FAIRFAX AVENUE (80.00' WIDE)

PARCEL 8
(PORTION OF FAIRFAX AVENUE)
11,069 SQ.FT.

APN 4621-018

NORTHWESTERLY LINE OF
PARCEL "C" (Y MAPS 18)

S54°28'21"E 289.61'

S40°33'52"W 80.31'

S54°28'21"E 105.88'

N77°30'53"E 107.63'

APN 4621-020

APN 4621-021

APN 4621-101

APN 4621-016

PARCEL 14
(SEE SHEET 5)

ARELIOS WALKER DRIVE (64.00' WIDE)

NORTHERLY LINE SOUTH
SAN FRANCISCO
HOMESTEAD AND
RAILROAD ASSOCIATION



APPROVED:

See Page 1

BRUCE R. STORRS
CITY & COUNTY SURVEYOR

9/20/19

DATE

CITY AND COUNTY OF SAN FRANCISCO PUBLIC WORKS
SUBDIVISION AND MAPPING

MAP TITLE VACATION OF A PORTION OF ARELIOS WALKER DRIVE, HUDSON AVENUE, GALVEZ AVENUE, FAIRFAX AVENUE, EVANS AVENUE, FITCH STREET AND EARL STREET

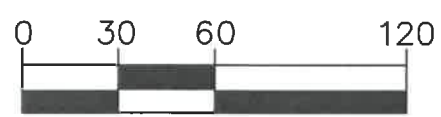
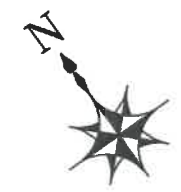
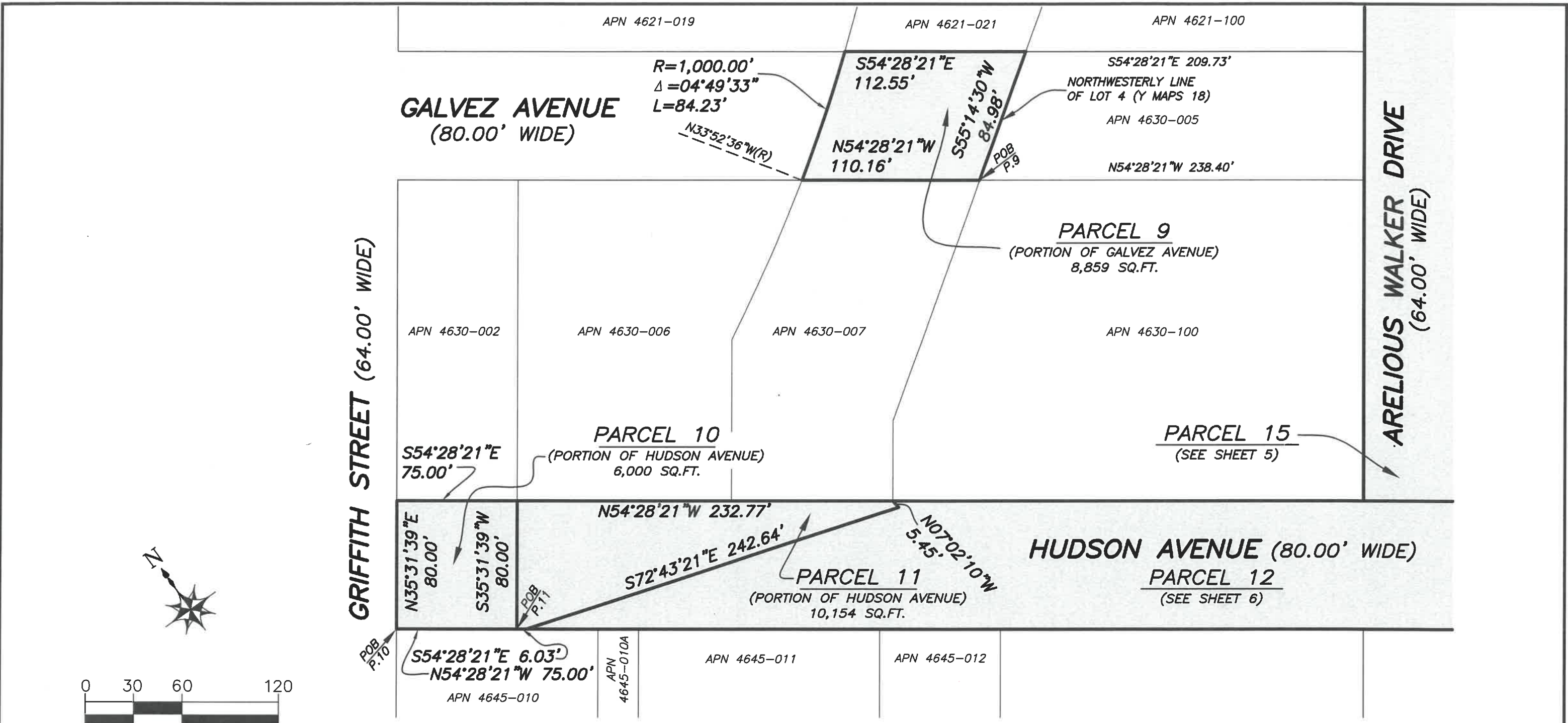
FILE:

SUR 2019-004

SHEET 3 OF 7

SCALE: 1:40

REVISION



GRAPHIC SCALE

SEE SHEET 1 FOR NOTES & LEGEND



APPROVED:

See Page 1 9/20/19

BRUCE R. STORRS
CITY & COUNTY SURVEYOR

DATE

| | | | |
|---|--------------|--------------|-------------|
| CITY AND COUNTY OF SAN FRANCISCO PUBLIC WORKS SUBDIVISION AND MAPPING | | | |
| MAP TITLE VACATION OF A PORTION OF ARELIIOUS WALKER DRIVE, HUDSON AVENUE, GALVEZ AVENUE, FAIRFAX AVENUE, EVANS AVENUE, FITCH STREET AND EARL STREET | | | |
| FILE: | SUR 2019-004 | SHEET 4 OF 7 | SCALE: 1:60 |
| | | | REVISION |

INNES AVENUE (80.00' WIDE)

HUDSON AVENUE (80.00' WIDE)

ARELIIOUS WALKER

PARCEL 12
(SEE SHEET 6)

PARCEL 14
(PORTION OF ARELIIOUS WALKER DRIVE)
9,153 SQ.FT.

PARCEL 7
(SEE SHEET 3)

N54°28'21"W 64.00'
N35°31'39"E 362.72'
DRIVE (64.00' WIDE)
S35°31'39"W 390.94'

R=101.00' S35°31'39"W
Δ=7°48'24" 143.05'
L=13.76'

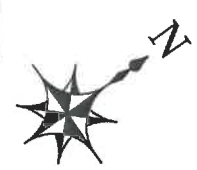
PARCEL 6
(SEE SHEET 3)

PARCEL 15
(PORTION OF ARELIIOUS WALKER DRIVE)
23,931 SQ.FT.

R=122.00'
Δ=26°42'11" 137.18'
L=56.86'

PARCEL 5
(SEE SHEET 3)

NORTHERLY LINE SOUTH
SAN FRANCISCO
HOMESTEAD AND
RAILROAD ASSOCIATION



GRAPHIC SCALE

SEE SHEET 1 FOR NOTES & LEGEND



APPROVED:

See Page 1

BRUCE R. STORRS
CITY & COUNTY SURVEYOR

9/20/19

DATE

CITY AND COUNTY OF SAN FRANCISCO PUBLIC WORKS
SUBDIVISION AND MAPPING

MAP TITLE VACATION OF A PORTION OF ARELIIOUS WALKER DRIVE, HUDSON AVENUE, GALVEZ AVENUE, FAIRFAX AVENUE, EVANS AVENUE, FITCH STREET AND EARL STREET

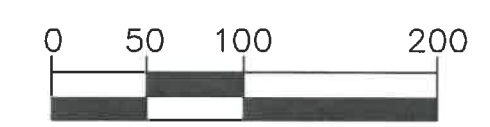
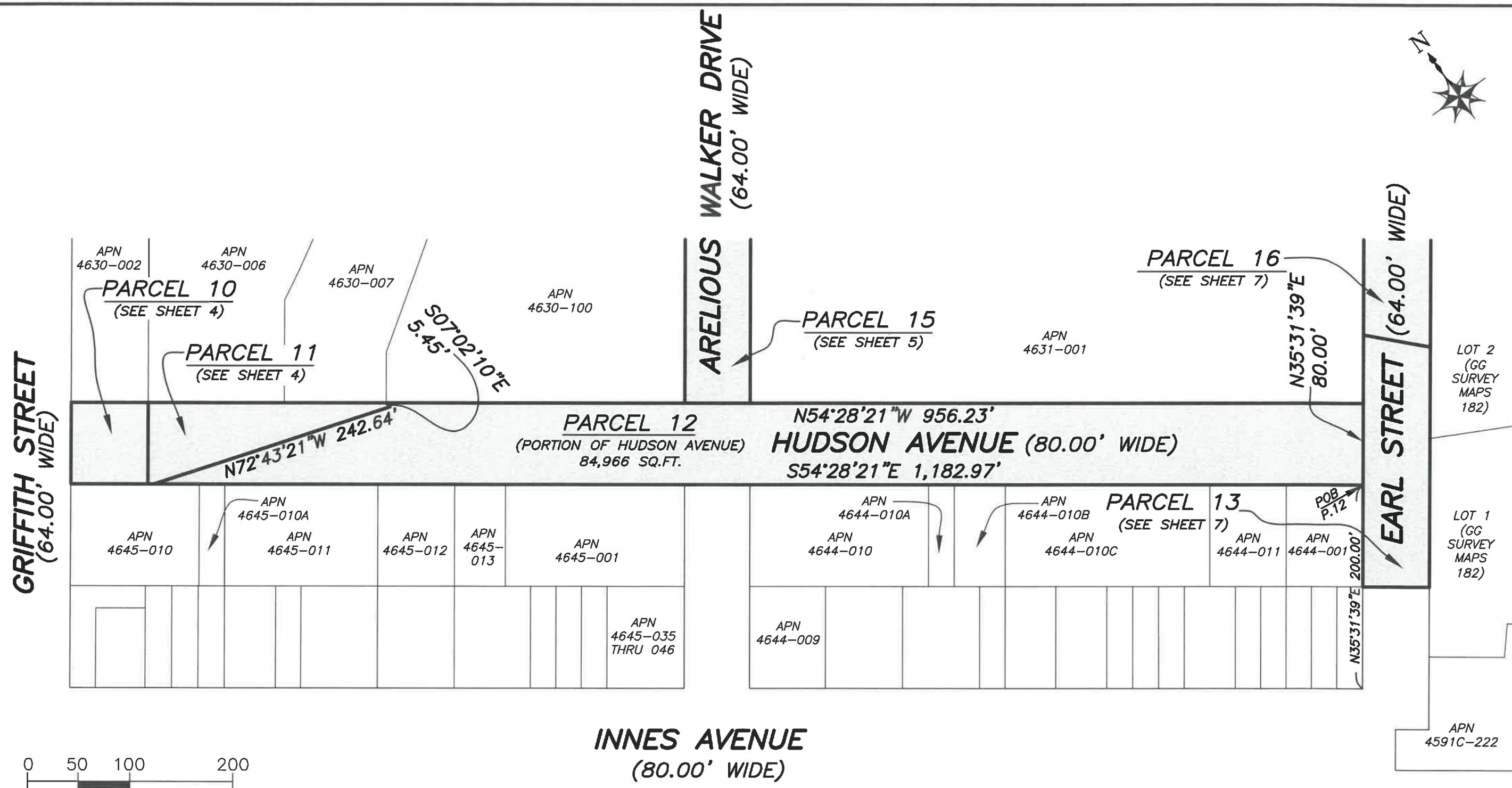
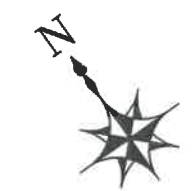
FILE:

SUR 2019-004

SHEET 5 OF 7

SCALE: 1:80

REVISION



GRAPHIC SCALE

INNES AVENUE
(80.00' WIDE)

SEE SHEET 1 FOR NOTES & LEGEND



APPROVED:
See Page 1
BRUCE R. STORRS
CITY & COUNTY SURVEYOR

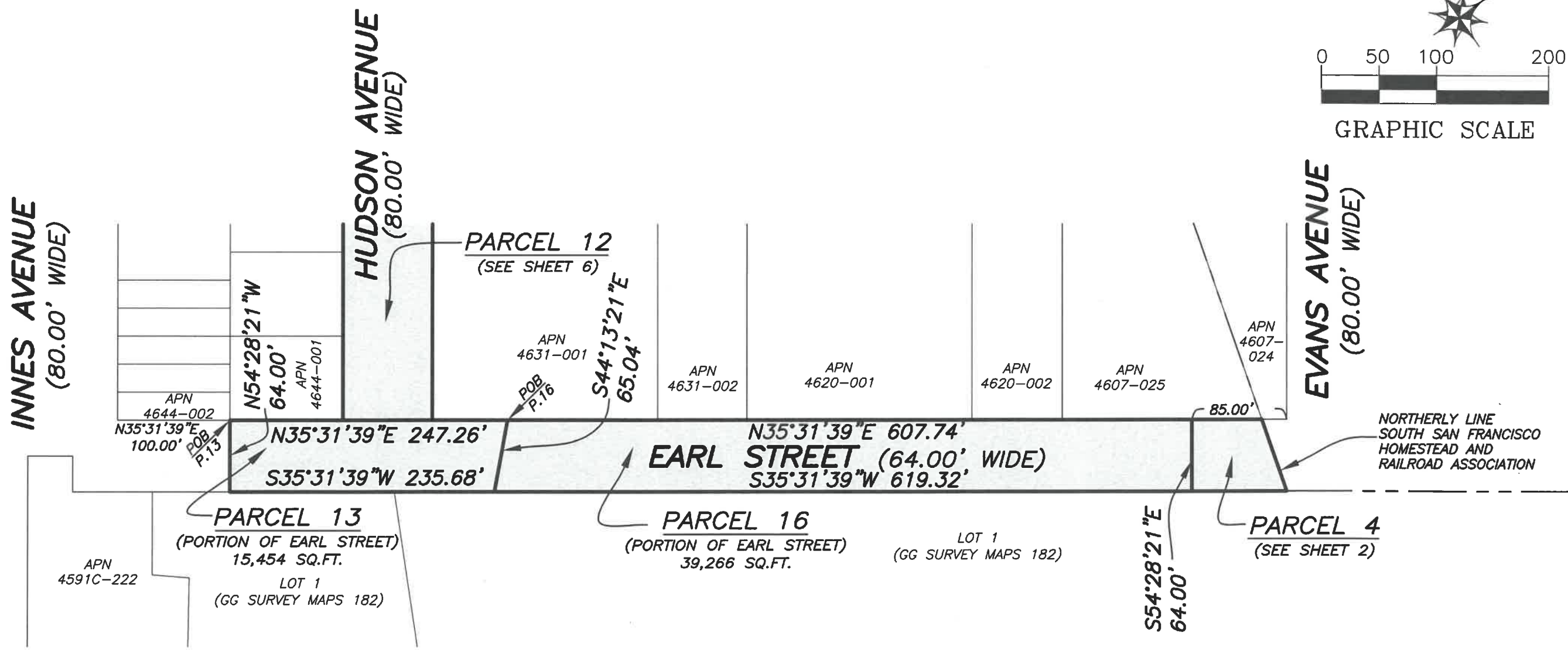
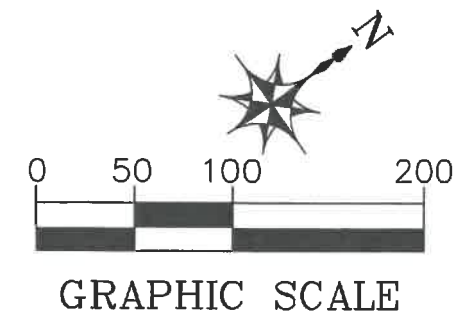
9/20/19
DATE

CITY AND COUNTY OF SAN FRANCISCO PUBLIC WORKS
SUBDIVISION AND MAPPING

MAP TITLE VACATION OF A PORTION OF ARELIOS WALKER DRIVE, HUDSON AVENUE, GALVEZ AVENUE, FAIRFAX AVENUE, EVANS AVENUE, FITCH STREET AND EARL STREET

| | | | |
|---------------------------|---------------------|---------------------|-----------------|
| FILE: SUR 2019-004 | SHEET 6 OF 7 | SCALE: 1:100 | REVISION |
|---------------------------|---------------------|---------------------|-----------------|

S-8484 Street Vacation Exhibit.dwg



SEE SHEET 1 FOR NOTES & LEGEND



APPROVED:
See Page 1

 BRUCE R. STORRS
 CITY & COUNTY SURVEYOR

9/20/19

 DATE

CITY AND COUNTY OF SAN FRANCISCO PUBLIC WORKS
 SUBDIVISION AND MAPPING

MAP TITLE VACATION OF A PORTION OF ARELIOS WALKER DRIVE, HUDSON AVENUE, GALVEZ AVENUE, FAIRFAX AVENUE, EVANS AVENUE, FITCH STREET AND EARL STREET

| | | | |
|---------------------------|---------------------|---------------------|-----------------|
| FILE: SUR 2019-004 | SHEET 7 OF 7 | SCALE: 1:100 | REVISION |
|---------------------------|---------------------|---------------------|-----------------|

S-8484 Street Vacation Exhibits.dwg