

PREPARED BY:	JTM	CHECKED BY:	J. HURLEY
DRAWN BY:	JCM	DATE:	8/8/2019
CONTRACT NO.	KMK	SCALE:	1" = 50'
DRAWING NO.		SHEET NO.	1
		OF 1 SHEETS	

PARCELS A, B, C, AND D
LDDA

SAN FRANCISCO PORT COMMISSION
 PORT OF SAN FRANCISCO
 DEPARTMENT OF ENGINEERING



APPROVED BY: _____
 SAN FRANCISCO PORT COMMISSION
 DATE: _____
 CHIEF HARBOR ENGINEER

LDDA - Exhibit A-2

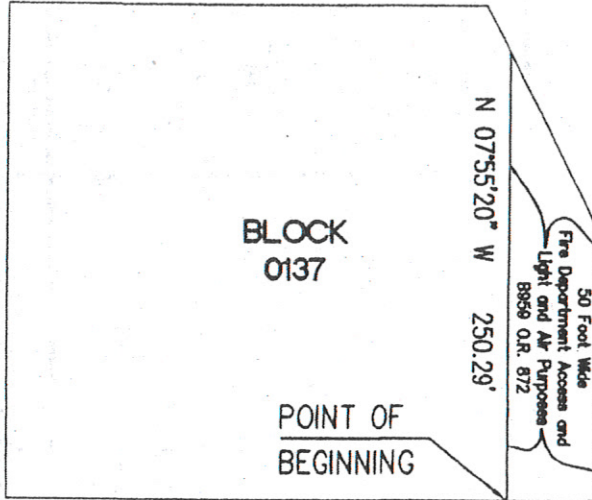
INITIALS: PORT: _____ TENANT: _____ DATE: _____

F:\MSDCMG\181117

GREEN STREET
(68.75' WIDE)



SCALE: 1" = 100'



BLOCK 0137

POINT OF BEGINNING

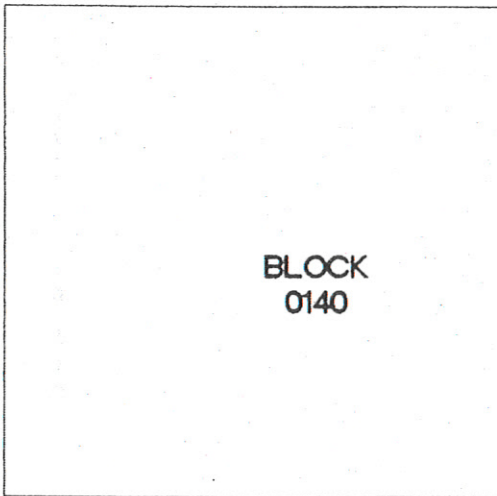


BLOCK 0138

LOT LINES TO BE REMOVED

VALLEJO STREET
(68.75' WIDE)

S 82°04'40" W 44.31'



BLOCK 0140

N 34°03'52" W 55.46'
N 07°55'20" W 293.96'
DAVIS STREET
(69.79' WIDE)

BLOCK 0139

THE EMBARCADERO
(WIDTH VARIES)
S 34°03'52" E 602.36'

BROADWAY
(WIDTH VARIES)

S 82°04'40" W 47.04'

R=236.63'
L=161.97'
D=39°13'03"

KCA ENGINEERS, INC.

CONSULTING ENGINEERS • SURVEYORS • PLANNERS

318 BRANNAN ST. • SAN FRANCISCO, CA 94107 • (415) 546-7111 • FAX: (415) 546-9472

LOT LINE ADJUSTMENT
ASSESSOR'S BLOCKS 0139 & 0138
SAN FRANCISCO CALIFORNIA

DATE:
07.19.16

1 OF 1