




Community Hubs Initiative

Joint City & Schools Select Committee

August 28, 2020



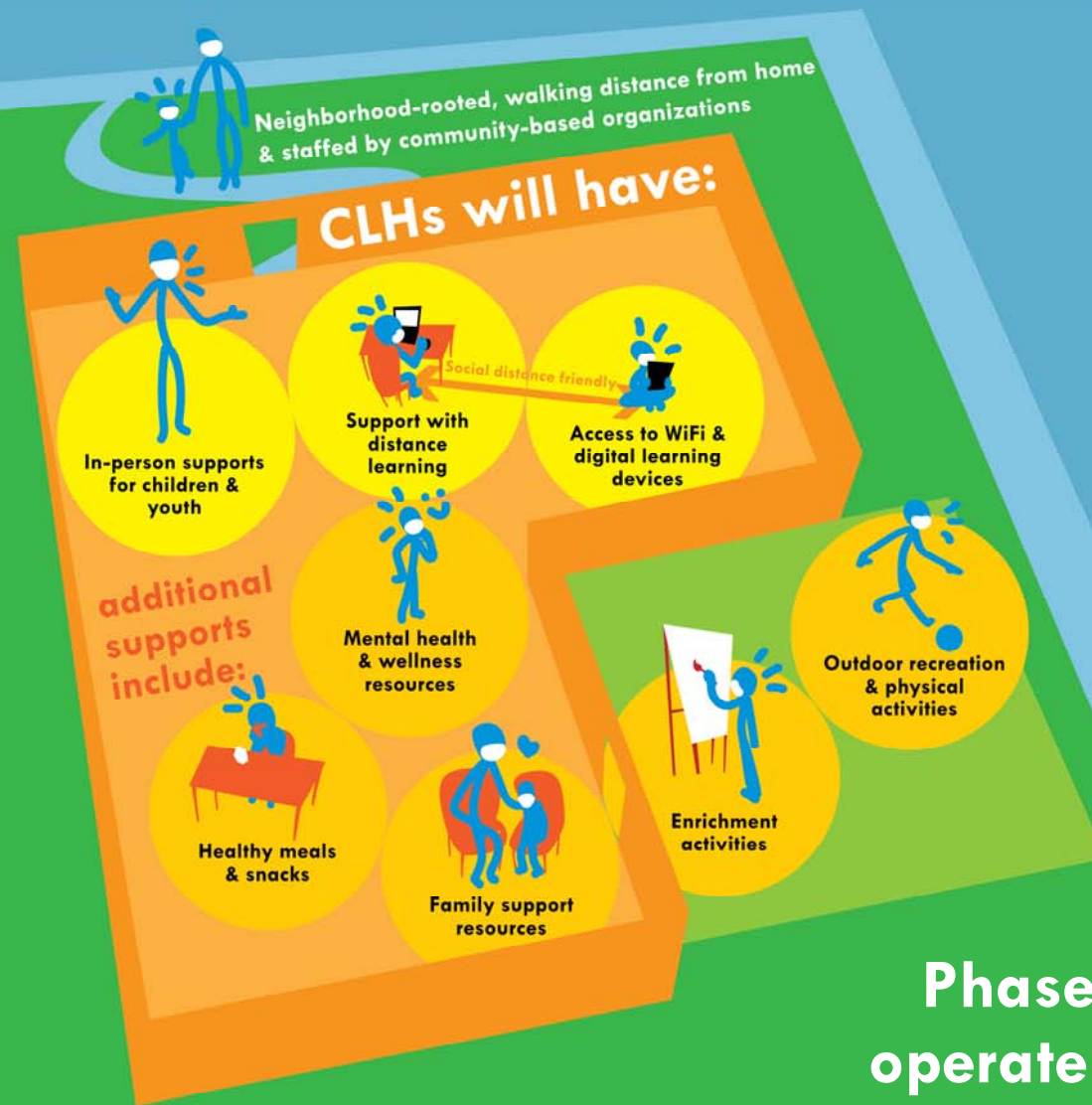
“It will take a village to address the wide range of learning needs for our City’s children and youth during the COVID-19 pandemic, and the Community Hubs will provide a much-needed resource for our most vulnerable students.”

—Mayor London N. Breed

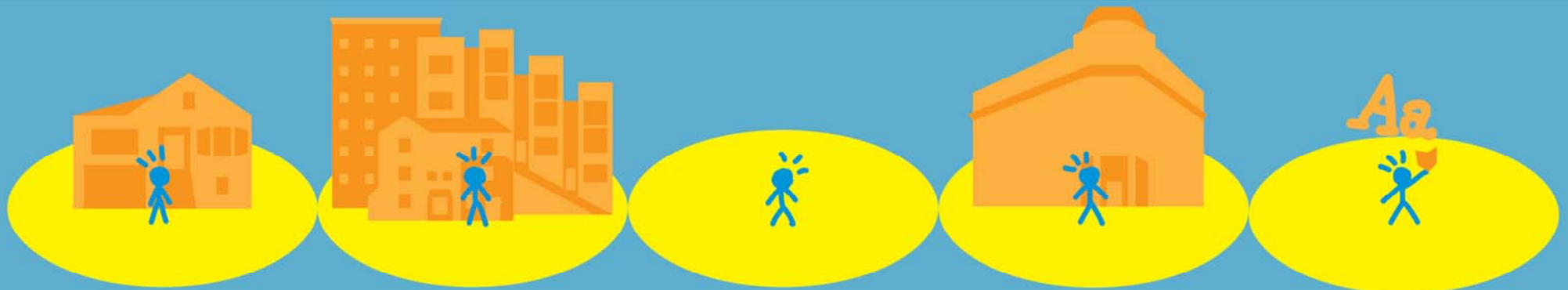
What are Community Hubs?

- ✓ Neighborhood-based
- ✓ In-person supports for distance learning
- ✓ Small, stable cohorts of youth
- ✓ Build social-emotional wellbeing
- ✓ Staffed with youth development professionals

Phase I starts September 14, Hubs will operate Monday-Friday 8:30am-5:30pm



We're fighting increasing disparities for our most marginalized students:



Low-income households

Residents of HOPE SF, public housing, & SROs

Homeless youth

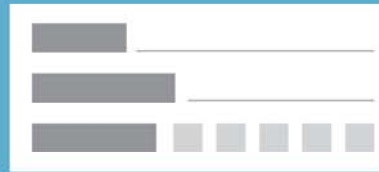
Foster youth

English Language Learners

1 Community-based organizations will outreach to **eligible families**



HOPE SF Residents
Public Housing Residents
SRO Residents
Foster Care Youth
Homeless Youth
African American Youth
Latinx Youth
Pacific Islander Youth
Low-income Asian Youth
English Language Learners



2 Parents/guardians will complete a **Community Hub application**



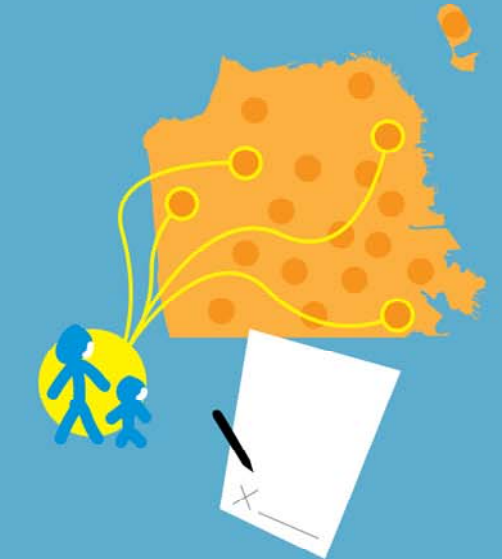
Community Hubs Initiative

Phase I: Focused Outreach, Registration & Enrollment

3 DCYF will review applications & prioritize based on **additional criteria**



Multi-system involved
No Internet access
No digital learning device



4 If eligible & space is available, an acceptance notification will be sent that must be signed and returned

Enrollment Status Update (8/28/20)

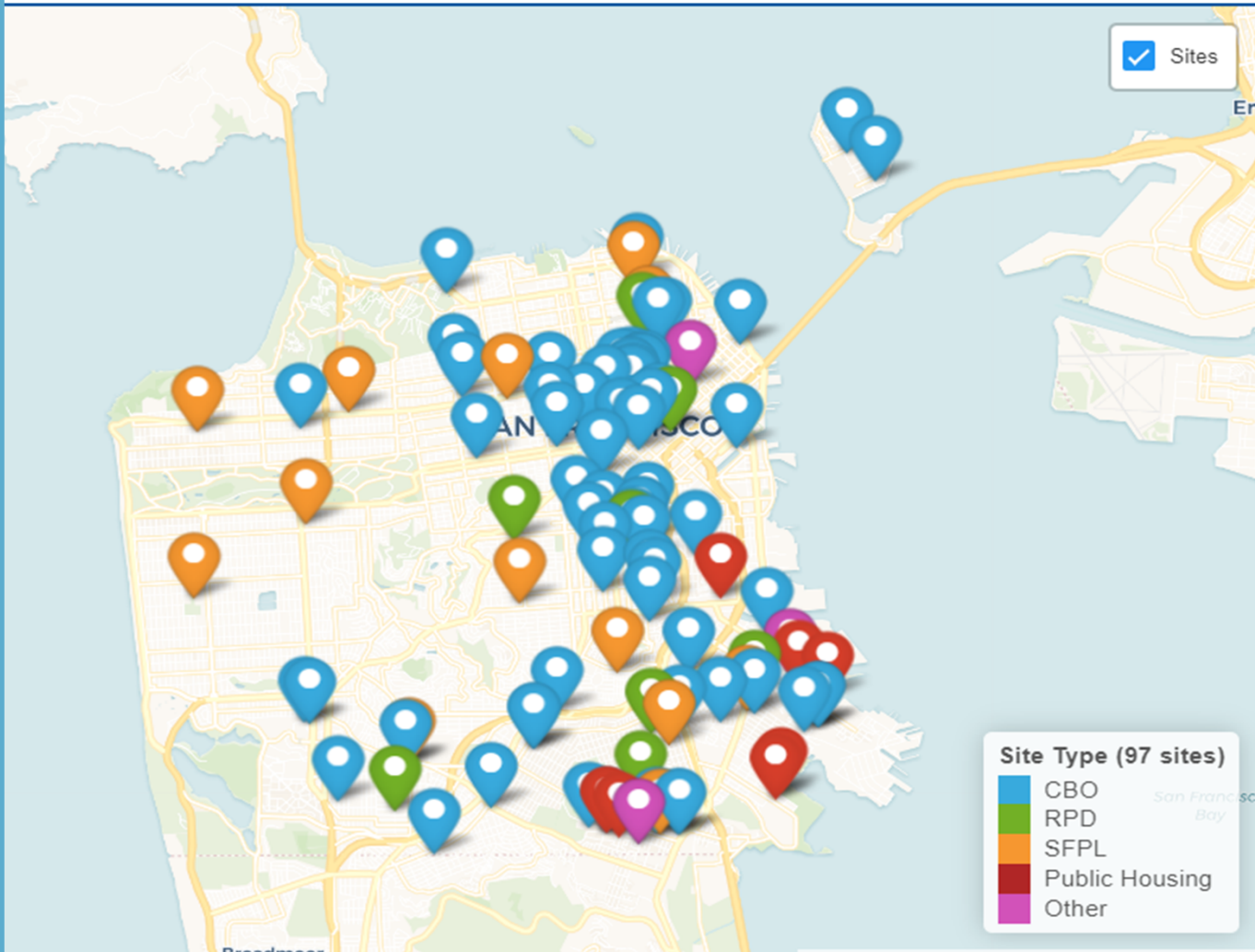
- DCYF released invite only application on **August 24**.
- The Application Form is available in six languages (Arabic, Chinese, English, Filipino, Spanish, Vietnamese).
- Priority for the initial phase of outreach for the approximately 2,000 slots is to the following populations:
 - Youth in public housing and Hope SF
 - Youth residing in Single Resident Occupancy hotels
 - Homeless and underhoused youth
 - Youth in the foster care system
- As of **August 27** at 9pm 13 applications had been submitted.

Status of Phase 1 Hub Sites (8/28/20)

Phase 1 Community Hubs Initiatives Site and Capacity Counts		
Supervisor District	Number of Sites	Sum of Capacity
1	3	80
2	1	24
3	4	102
5	4	149
6	15	392
7	4	106
8	4	123
9	6	162
10	20	805
11	5	139
Grand Total	66	2,082

POTENTIAL COMMUNITY HUB SITES AS OF 8/27/2020

This map represents possible CH sites to be finalized. Map is intended for planning purposes and should not be di



Hub Site Status Update

Our Partners

Department of Children, Youth & Their Families

Recreation & Parks Department

SF Public Library

Mayor's Office of Housing & Community Development

HOPE SF

Department of Technology & Information Services

Department of Public Health

Human Services Agency

Office of the City Administrator

DCYF Grantees



We're partnering with these DCYF grantees*

826 Valencia	Community Youth Center of San Francisco	Mission Neighborhood Centers	San Francisco CASA
ABADA-Capoeira San Francisco	CommunityGrows	Mission YMCA	Shih Yu-Lang Central YMCA
Aim High for High School	Dance Brigade	Mission Youth Soccer League	Southeast Asian Development Center
The Art of Yoga Project	Embarcadero YMCA	MyPath	Spark
Asian Pacific American Community Center	Felton Institute	New Door Ventures	Special Service for Groups
AsianWeek Foundation	Flyaway Productions	Niroga Institute	Stonestown Family YMCA
Bay Area Community Resources	Glide Foundation	Our Kids First	Success Center San Francisco
Bay Area Video Coalition	Good Samaritan Family Resource Center	Outward Bound California	Talent All Stars
BAYCAT	Hamilton Families	Peer Resources	Telegraph Hill Neighborhood Center
Bayview Hunters Point YMCA	Handful Players	Playworks Education Energized	Treasure Island Sailing Center
The Beat Within	HOMEY	Portola Family Connection Center	United Playaz
Booker T. Washington Community Service Center	Horizons Unlimited of San Francisco	Potrero Hill Neighborhood House	Up on Top
Boys & Girls Clubs of San Francisco	Indochinese Housing Development Corporation	Presidio Community YMCA	Urban Ed Academy
Buchanan YMCA	Ingleside Community Center	Project Commotion	The Village Project
Buena Vista Child Care	Jamestown Community Center	Real Options for City Kids	West Bay Pilipino Multi Service Center
Catholic Charities CYO of the Archdiocese of SF	Jewish Community Center of San Francisco	Richmond District YMCA	Women's Audio Mission
Children's After School Arts	Jewish Vocational Service	Richmond Neighborhood Center	Youth Art Exchange
Chinatown YMCA	Juma Ventures	Safe & Sound	Youth First
City of Dreams	Larkin Street Youth Services	The Salvation Army	
City Surf Project	The Marsh	Samoan Community Development Center	
Collective Impact	Mission Graduates	San Francisco Brown Bombers	

*More CBOs will be added to this list as they confirm their participation

It takes a village.

We can't do this alone. Our children are all our responsibility.



Donations to Give2SF.org can be used to support Community Hubs

Make a tax-deductible contribution

The City and County of San Francisco can accept tax-deductible monetary contributions for the City's COVID-19 outbreak response efforts.

These efforts include providing shelter, food and other assistance to individuals, families, small businesses, and nonprofits in San Francisco.

You can pay online by card or electronic check.

[Donate now](#)

Making San Francisco



a great place to grow up

