

# San Francisco – Mental Health Services Act

## FY2020-2023 Three-Year Integrative Plan

September 16, 2020



San Francisco Health Network  
Behavioral Health Services



# Behavioral Health Services (BHS)

BHS offers a full range of specialty behavioral health services provided by a culturally diverse network of community behavioral health programs and private psychiatrists, psychologists and therapists.

Mental Health and Substance Use Services include outpatient treatment, inpatient treatment, medication management, linkage services and a large array of more specialized treatment services.

Services are available to residents of San Francisco who receive Medi-Cal benefits, San Francisco Health Plan benefits and to residents with limited resources.



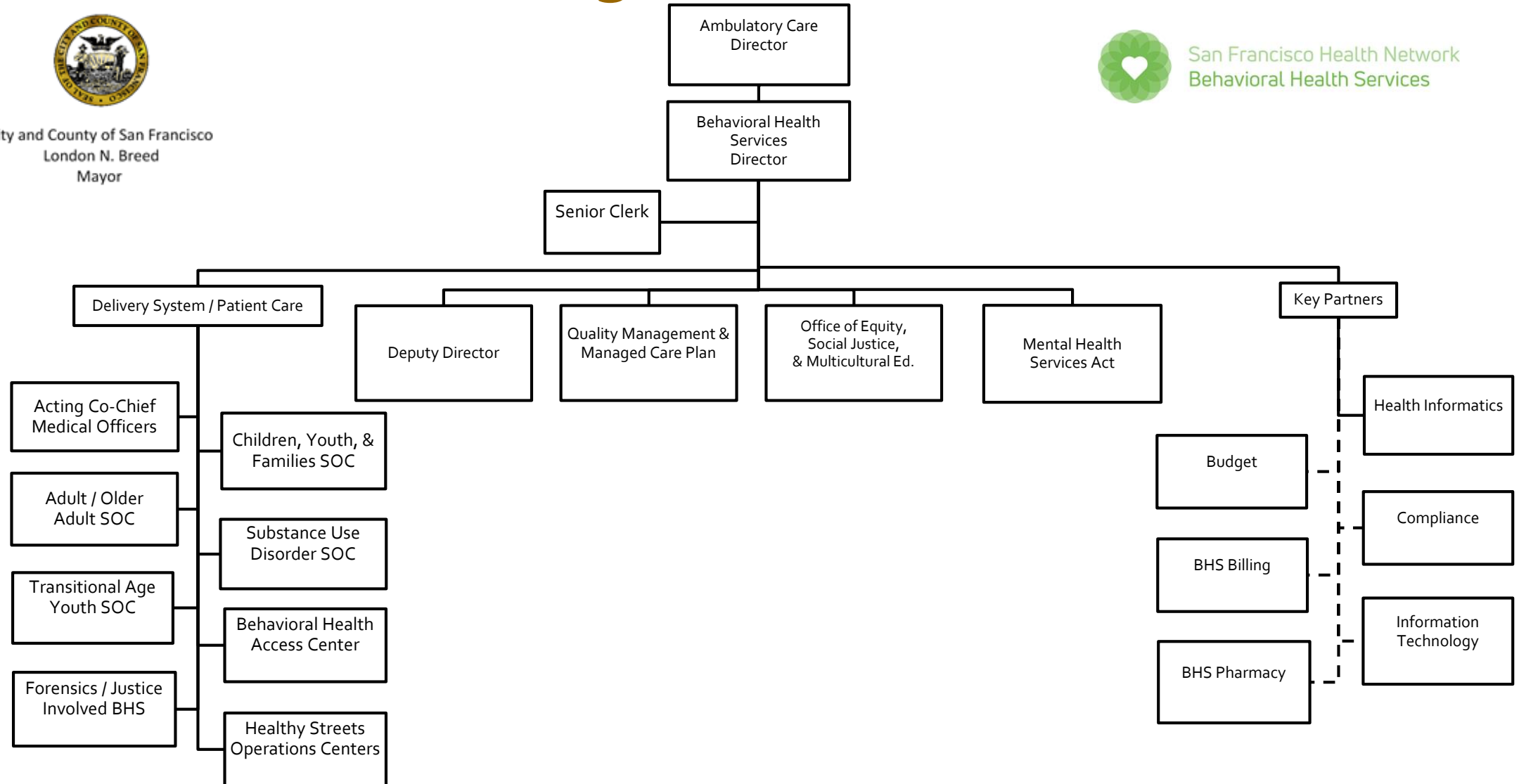
# BHS Organizational Chart



City and County of San Francisco  
London N. Breed  
Mayor



San Francisco Health Network  
Behavioral Health Services



# MHSA Overview



Enacted into law in 2005



1% tax on personal income over \$1 million



Designed to support the transformation of the mental health system to address unmet needs



Based on a set of core principles

# MHSA's 5 Funding Components: San Francisco's 7 Service Categories



Community Services  
& Supports (CSS)



Innovation (INN)



Prevention and Early  
Intervention (PEI)



Workforce Education  
and Training (WET)



Capital Facilities and  
Technology Needs (CF/TN)

1. Recovery-Oriented Treatment
2. Mental Health Promotion
3. Peer-to-Peer Support Services
4. Vocational Services
5. Housing for FSP Clients
6. Workforce Development
7. Capital Facilities and Information Technology

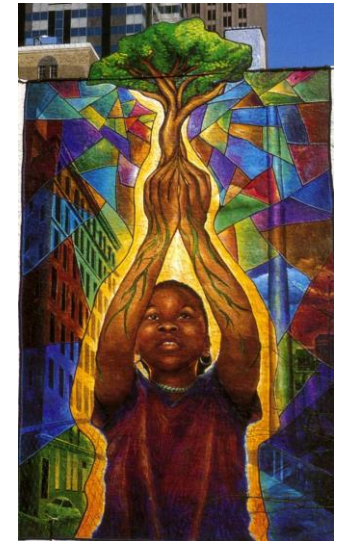
# San Francisco MHSA Programs

SF MHSA currently funds **84 programs** and in FY18-19, served **50,315 unduplicated individuals**. Highlights include:

- 15 Population-focused Programs
- 12 Full Service Partnership Programs
- 12 Peer Programs
- 9 BH Workforce Development Programs

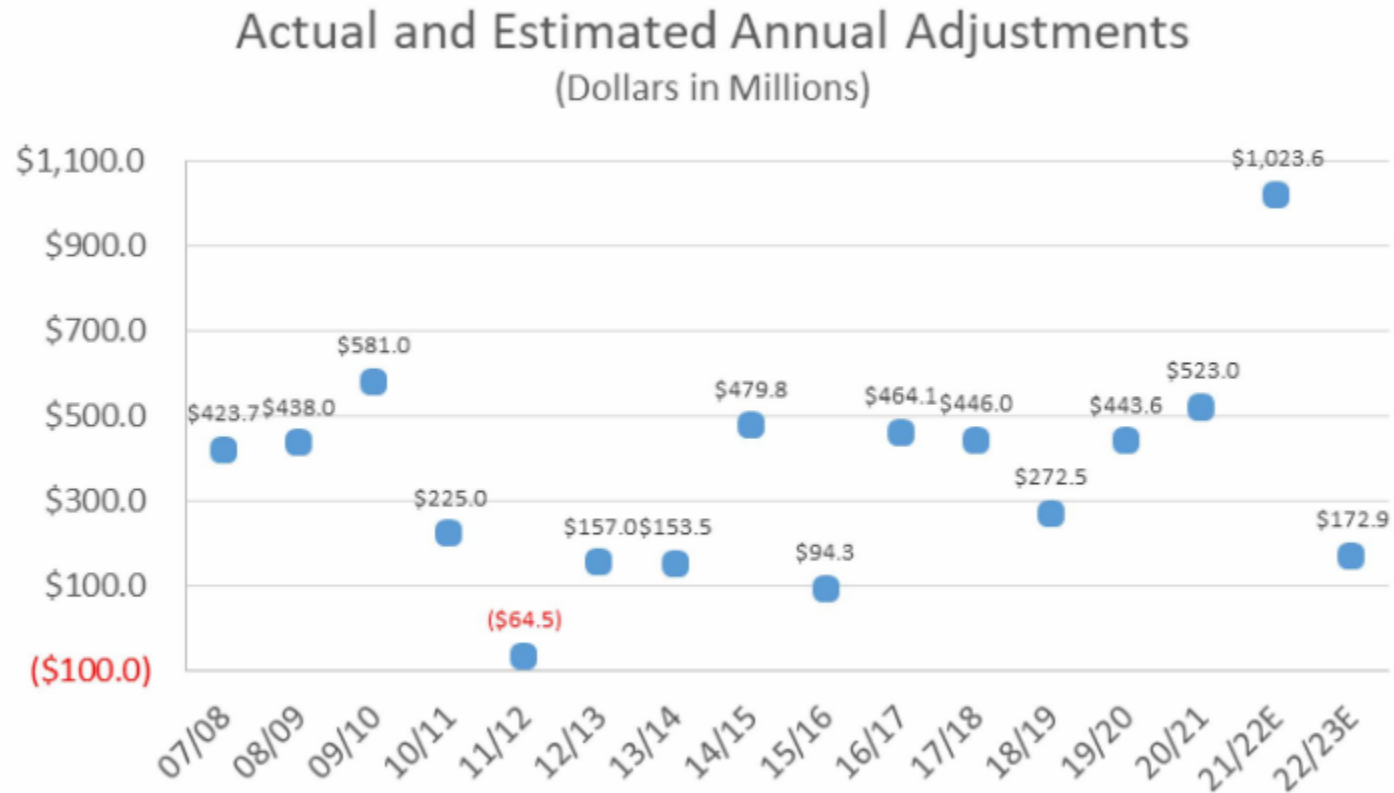
- 9 Vocational Programs
- 5 Recovery-Oriented Treatment Programs
- 14 Mental Health Promotion & Early Intervention Programs
- 4 Supporting Housing Programs (~200 units)

- 4 Capital Facilities and Information Technology Programs



# Mental Health Services Act State Revenue

- Annual Adjustments for State Revenue is incredibly volatile from year to year



# San Francisco MHSA Revenue Over Time



	FY 12-13	FY 13-14	FY 14-15	FY 15-16	FY 16-17	FY 17-18
MHSA Distribution	\$29,515,643	\$22,944,624	\$32,117,207	\$26,160,492	\$33,990,315	\$37,346,778
% Change from Prior Year	0	-22%	40%	-19%	30%	10%





# New MHSA Projects Implemented within the Last Few Years

## Technology-Based Mental Health Solutions

- **24/7 Peer Chat:** with a trained peer specialist, connection to local resources and peer-led outreach and engagement activities.
- Priority population for this project includes transition aged youth (TAY) and socially isolated transgender adults.

## Family Unification and Emotional Resiliency Training (FUERTE)

- **Curriculum** built on theory and evidence-based practices.
- Target: Newcomer **Latinx immigrant youth** (12 to 18) in the SF Unified School District.
- Designed to **address trauma, violence, feelings of inadequacy** and acculturation.

## The Intensive Case Management/Full Service Partnership programs to Outpatient Transition Support project

- An autonomous **peer linkage team** that provides both **wraparound services and a warm hand off** from ICM to OP.
- **Engage clients in the mental health system** to avoid and minimize any disruption in services.

## Wellness In The Streets (WITS)

- **Roving support team** of formerly homeless peers.
- **Peer interventions** that include manual-based and evidence-based peer modalities.
- Peer interventions directly on the streets **have never been tested in San Francisco.**

## Online Learning Management System

- **Training tool** to increase access to staff training activities.
- Professional development & continuing education credits **with an array of topics.**

# Looking Forward: No Place Like Home (NPLH)

- No Place Like Home (NPLH) is a \$2 billion bond to construct Permanent Supportive Housing (PSH) units for people with severe and persistent mental illness that are also homeless, chronically homeless, and at risk of chronic homelessness.
  - The bonds are repaid by funding from the MHSA Fund
  - San Francisco County is projected to receive about **\$100 million in total over the course of the NPLH project**, roughly **500 NPLH units**.
- NPLH funds the construction of PSH units, but not supportive services. However, counties must provide supportive services for NPLH units.
  - Cross-county project planning meetings with BHS Systems of Care, MHSA, and HSH (Dept of Homelessness and Supportive Housing) to identify supportive service needs and make recommendations for NPLH unit allocation by age group
- The first NPLH units are projected to be completed by 2021.
- NPLH will help us support the new Mental Health SF Legislation and focus on priority populations including the homeless communities.

# Proposed Innovation Project

The proposed project is a five-year program, with an annual Innovation budget of \$600,000 for years one, two and three and an annual budget of \$1.2 million for years four and five.

Six (6) main learning goals:

1. **Conduct a comprehensive Community Needs Assessment.**
2. **Evaluate new outreach and engagement practices for Black/African American clients.**
3. **Evaluate culturally adaptive practices/interventions that increase consumer satisfaction and efficacy.**
4. **Evaluate the efficacy of using peers with lived experience that represent the Black/African American communities and have an expertise in cultural humility.**
5. **Develop a wellness-oriented manualized curriculum that provides best practices when working with this priority population.**
6. **Develop a network of trained staff that will lead training sessions for other providers that are interested in undertaking these models/practices.**



# Innovation Project - Key Components



- The three identified pilot sites may be South of Market Mental Health (SOMMH), Mission Mental Health Clinic, and OMI Family Center.
- This program will focus on serving individuals from neighborhoods including Bayview, Hunter's Point, Fillmore, Sunnydale, Visitacion Valley, Potrero Hill, South of Market Area, Downtown, etc.
- SF-MHSA/BHS would begin the process of hiring behavioral health staff that demographically represent the Black/African American communities and those who have an expertise in culturally responsive interventions.
- The learning project will provide an expanded research and testing of culturally congruent interventions specifically designed for the Black/African American populations in SF.
- A small component of this project may include engagement and outreach with churches and barbershops to provide mental health promotion.
- We may evaluate subgroups: Adults, Older Adults, TAY, Parents, Women, LGBTQ+, etc.
- We will collaborate with OESM to ensure equity is a key component in the development of services and how we engage the communities.
- Evaluation will be a critical component of this project.

# FY18/19 Performance Highlights

## Full Service Partnership Programs

- ✓ **86%** decrease in expulsions for children and youth
- ✓ **85%** decrease in arrests for adults
- ✓ **90%** decrease in mental health & substance use disorder **emergencies** for transition age youth



## School-Based Programs

- ✓ **83%** of students receiving services **reduced chronic absenteeism** in the trauma and recovery program
- ✓ **79%** of school staff reported **improvements with student behaviors** due to consultation services

## Drop-In Self Help Community Center

- ✓ **92%** of Harm Reduction Support Group participants demonstrated **reduced risk behaviors**

## First Impressions Vocational Construction Program

- ✓ **100%** of graduates reported an **improvement in development of work readiness skills**

## Peer-to-Peer Support Services

- ✓ **A total of 352** MHSA-funded **peer specialists** are currently employed within BHS

# Questions?



Jessica Brown, MPH  
MHSA Director  
1380 Howard Street  
San Francisco, CA 94103  
(415) 255-3963

[Jessica.n.brown@sfdph.org](mailto:Jessica.n.brown@sfdph.org)