



Joint Select Committee
SFUSD's Fall Learning Plan Update
September 25, 2020

Agenda for Today

Fall Learning 2020

- Distance Learning
- Remote Work Sites

Phases 2a and 2b Hybrid Learning

- Decision Trees

Next Steps

Fall Learning 2020

SAN FRANCISCO UNIFIED SCHOOL DISTRICT



Recommendation

**Phase 1:
Distance
Learning
initially (phased
return)**

Phase 2: Hybrid

**Phase 3: Full
Return**

- All students begin in distance learning on August 17
- Plan for Distance Learning to start and then phase into a hybrid model once science and data suggest it is safe to do so
- Consider limited in-person school for small groups of priority students at a limited number of physical school locations as we move into Phase 2

Remote Work Locations

Remote Work Sites

- Burton
- Hoover
- Everett
- Lowell
- Balboa
- Wallenberg
- Presidio MS
- Vis Valley MS
- Francisco
- Monroe

Status Update

6

- All educators with a Remote Work placement may choose from any of the Remote Work locations
- Participants complete safety training and conduct daily protocols

State & Local Updates

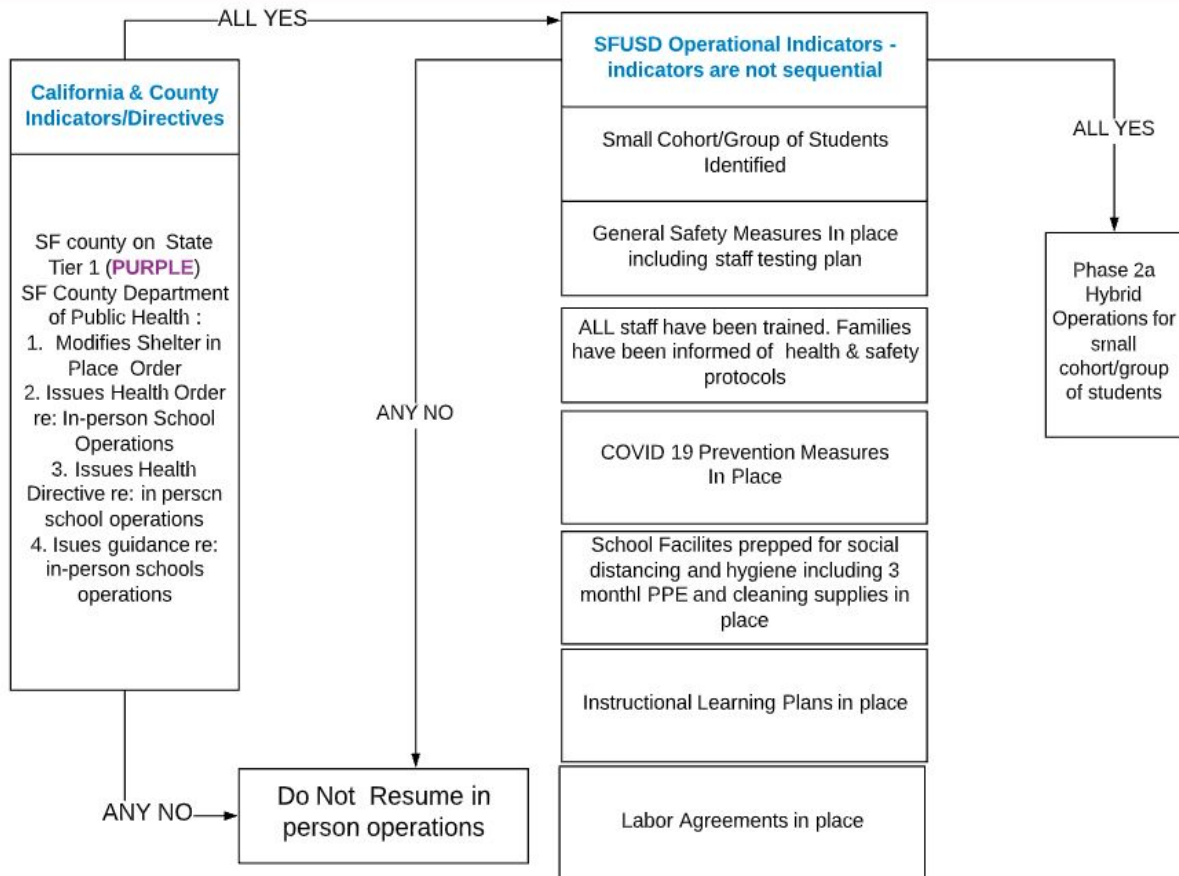
CaDPH announced a new tiered framework to replace county monitoring list which places counties in “tiers”. SF is currently in Tier 2

	Higher Risk → Lower Risk of Community Disease Transmission			
	Widespread Tier 1	Substantial Tier 2	Moderate Tier 3	Minimal Tier 4
Measures*				
New cases**/100,000 population per day (<u>7 day average</u> ; 7 day lag)	>7	4-7	1-3.9	<1
Testing % Positivity (<u>7 day average</u> ; 7 day lag)	> 8%	5-8%	2-4.9%	<2%

Gradual Return / Hybrid Phase 2A

Phase 2A - Gradual Return Operations Decision Tree

Small Cohort/Group Return



California and County Indicators

- SF county on State Tier 2 (Red) for 14 consecutive days
- SF County Department of Public Health
 - Modifies Shelter in Place Order
 - Issues Health Order re: In-person School Operations
 - Issues Health Directive re: in person school operations
 - Issues guidance re: in-person schools operations



Any NO:
Do Not
Resume In
Person
Operations



All YES:
Then...

SFUSD Operational Indicators

*Indicators are not sequential

- Small Cohort / Group of Students Identified
- General Safety Measures in place including staff testing plan
- ALL staff have been trained. Families have been informed of health & safety protocols
- COVID-19 Prevention Measures in place
- School facilities prepped for social distancing and hygiene including 3 month / PPE and cleaning supplies in place
- Instructional Learning Plans in place
- Labor Agreements in place



Any NO:
Do Not
Resume In
Person
Operations



All YES:
Then move to
Phase 2
gradual return

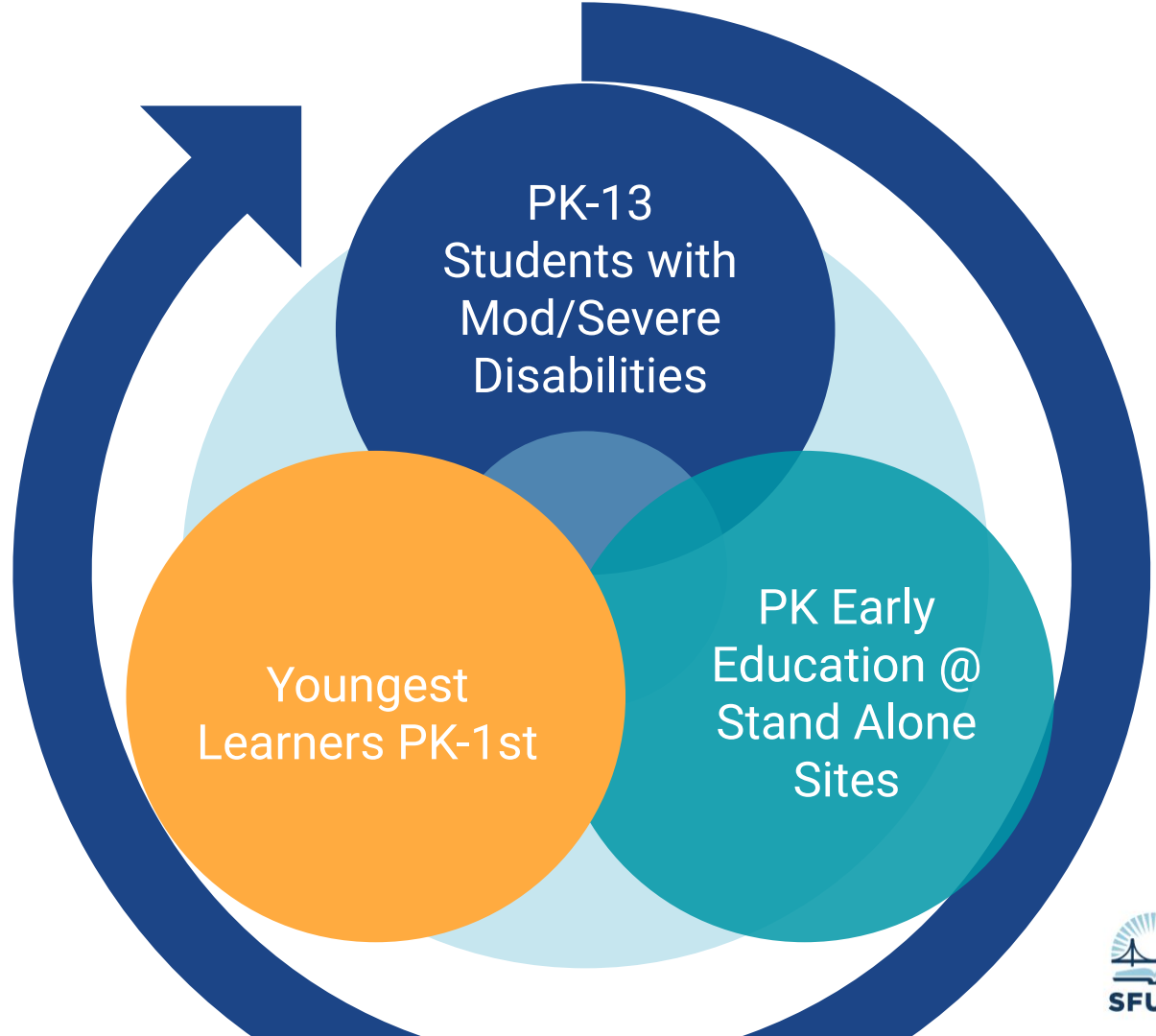
Small Cohort / Groups of Students Identified

- Identify students in priority groups
- Identify staffing for priority groups
- Identify site locations

If NO: Do Not Resume In Person Operations

For priority groups...

1. Identify students
2. Identify staffing
3. Identify site locations



General Safety Measures

- Worksite-specific COVID-19 prevention plan at every facility in place including designating a person at each school to implement the plan.
- Plan in place for the possibility of repeated closures of classes, groups or entire facilities when persons associated with the facility or in the community become ill with COVID-19
- Plan in place to support students with access and functional needs who may be at increased risk of becoming infected or having unrecognized illness due to COVID-19
- Plan in place to test all staff over 2 months, where 25% of staff are tested every 2 weeks or 50% every month to rotate testing of all staff over time.
- Plan in place on how SFUSD will cooperate with SFDPH data collection efforts

If NO: Do Not Resume In Person Operations

Preliminary Health & Safety Protocols for In-Person Learning

- Screen students each morning
- Designate an “isolation area” for anyone experiencing COVID-19 symptoms
- Create protocols to limit the sharing of objects and supplies
- Offer school meals in smaller, controlled settings
- Post signage promoting safe practices.
- Clean and disinfect all high-touch surfaces daily.
- Arrange classroom furniture to allow for 6 foot social distancing,
- Minimize non-essential visitors and volunteers to school sites.
- Require face coverings to be worn indoors at all times for students 3rd -12th grade.
- Provide employees whose job duties may require additional personal protective equipment
- Train employees and students on hand hygiene and respiratory etiquette
- Conduct daily health questionnaires for staff to affirm they are not experiencing COVID-19 symptoms prior to entering a building or office space.

ALL Staff Trained

Families Informed of Health & Safety Protocols

- Plan to train all staff in COVID 19 Safety Protocols in place
- Communication plan in place to provide information to families
- Enrollment plan in place that includes [Risk Acknowledgement Form](#)

If NO: Do Not Resume In Person Operations

COVID 19 Prevention Measures in Place

- Plan in place to implement COVID-19 Protocol for Symptoms, Testing Positive, or Close Contacts
- Plan for health screenings for students and staff
- Plan for identification and tracing of contacts
- Plan for testing of students and staff who have symptoms of COVID 10 or been exposed
- Communication plans in place to communicate with students, staff and parents about cases and exposures at school consistent with FERPA and HIPAA

If NO: Do Not Resume In Person Operations

School Facilities Prepped for Social Distancing

- 3 Months PPE
- Classroom furniture removed/relocated to ensure 6 ft social distancing
- Desktop partitions for educators and customer service functions
- Cleaning Supplies purchased and distributed
- Assess classroom ventilation
- Handwashing stations
- SNS infrastructure assessed and prepped for meal service
- Decals and signage allocated and placed

If NO: Do Not Resume In Person Operations

Instructional Learning Plans in Place

- Community Health Pledge - how schools will establish norms within school community to practice COVID 19 prevention and mitigation measures outside of school
- Bell schedules created
- Extracurricular activities plan
- Athletics/Sports
- In person learning model
- Distance Learning Model
- Outdoor Instruction
- Technology plans
- Assessment plans

If NO: Do Not Resume In Person Operations

Labor Agreements in Place

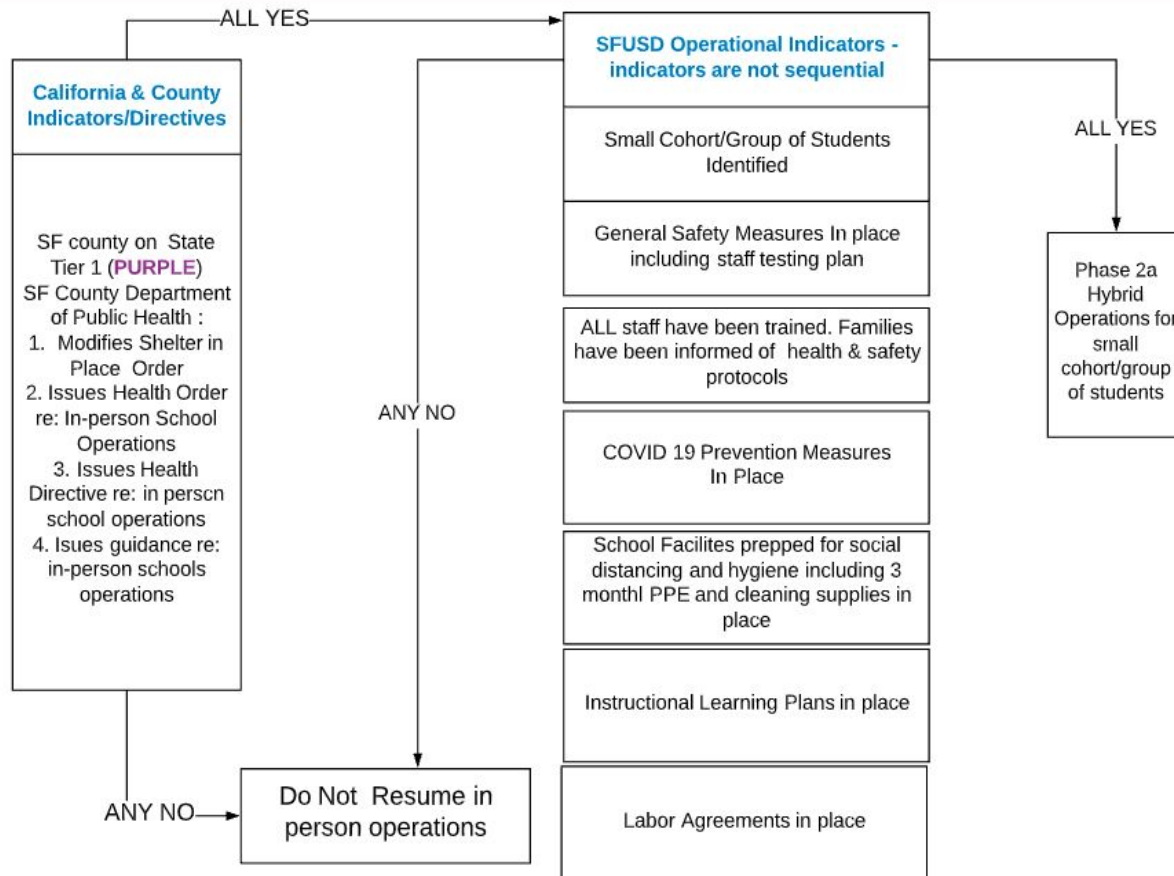
- Conditions necessary for in-person instruction
- Personal Protective Equipment
- Safety protocols including but not limited to social distancing and plexiglass shields
- Staffing concerns are addressed

If NO: Do Not Resume In Person Operations

If ALL yes: Phase 2A Hybrid Operations for small cohort / group of students

Phase 2A - Gradual Return Operations Decision Tree

Small Cohort/Group Return

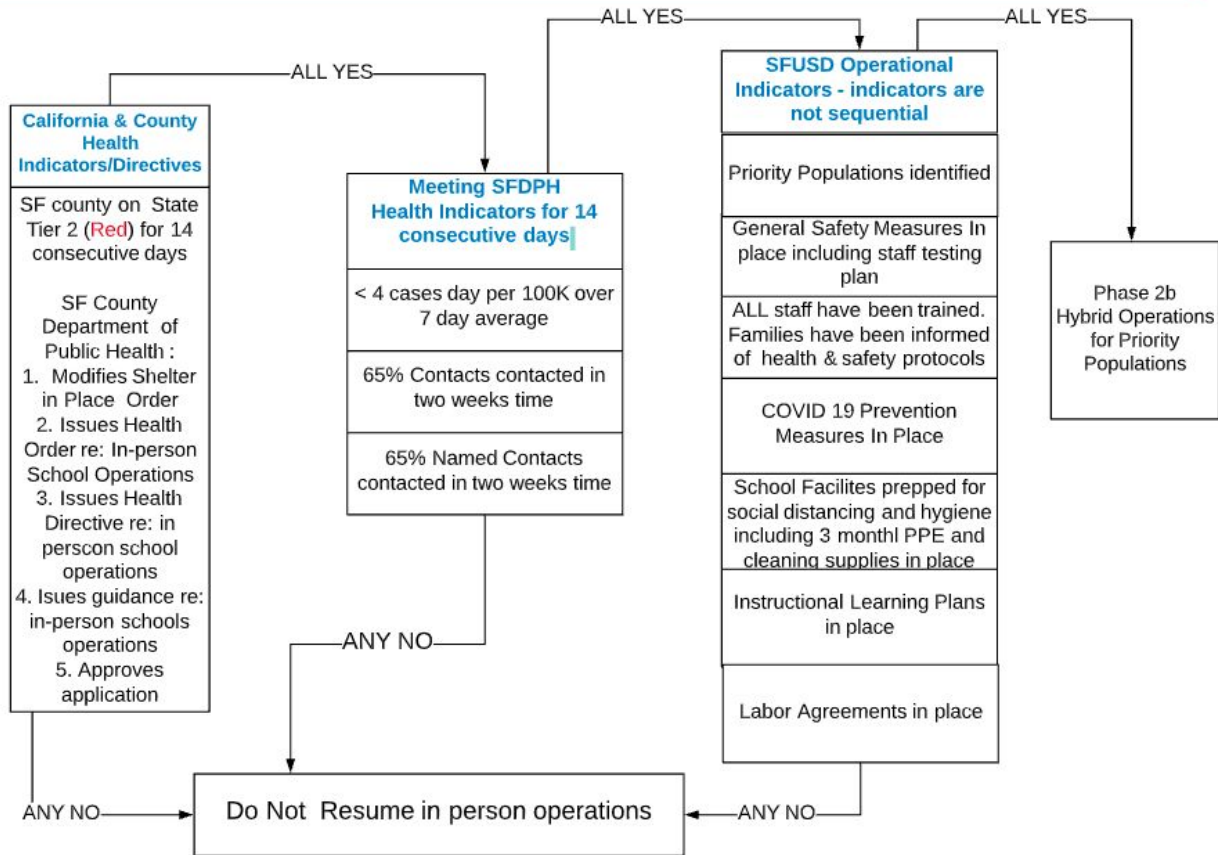


Gradual Return / Hybrid Phase 2B

DRAFT SFUSD Phase 2b Hybrid Operations Decision Tree_Priority Populations

Phase 2B -
Gradual Return
Operations
Decision Tree

Priority
Populations



California and County Indicators

- SF county on State Tier 2 (Red) for 14 consecutive days
- SF County Department of Public Health
 - Modifies Shelter in Place Order
 - Issues Health Order re: In-person School Operations
 - Issues Health Directive re: in person school operations
 - Issues guidance re: in-person schools operations
 - Application reviewed and approved



Any NO:
Do Not
Resume In
Person
Operations



All YES:
Then...

Meet SFPD Health Indicators for 14 Consecutive Days

- < 4 cases day per 100K over 7 day average
- 65% Contacts contacted in two weeks time
- 65% Named Contacts contacted in two weeks time



Any NO:
Do Not
Resume In
Person
Operations



All YES:
Then...

SFUSD Operational Indicators

*Indicators are not sequential

- Priority Populations identified
- General Safety Measures in place including staff testing plan
- ALL staff have been trained. Families have been informed of health & safety protocols
- COVID-19 Prevention Measures in place
- School facilities prepped for social distancing and hygiene including 3 month / PPE and cleaning supplies in place
- Instructional Learning Plans in place
- Labor Agreements in place



Any NO:
Do Not
Resume In
Person
Operations



All YES:
Then move to
Phase 2
gradual return

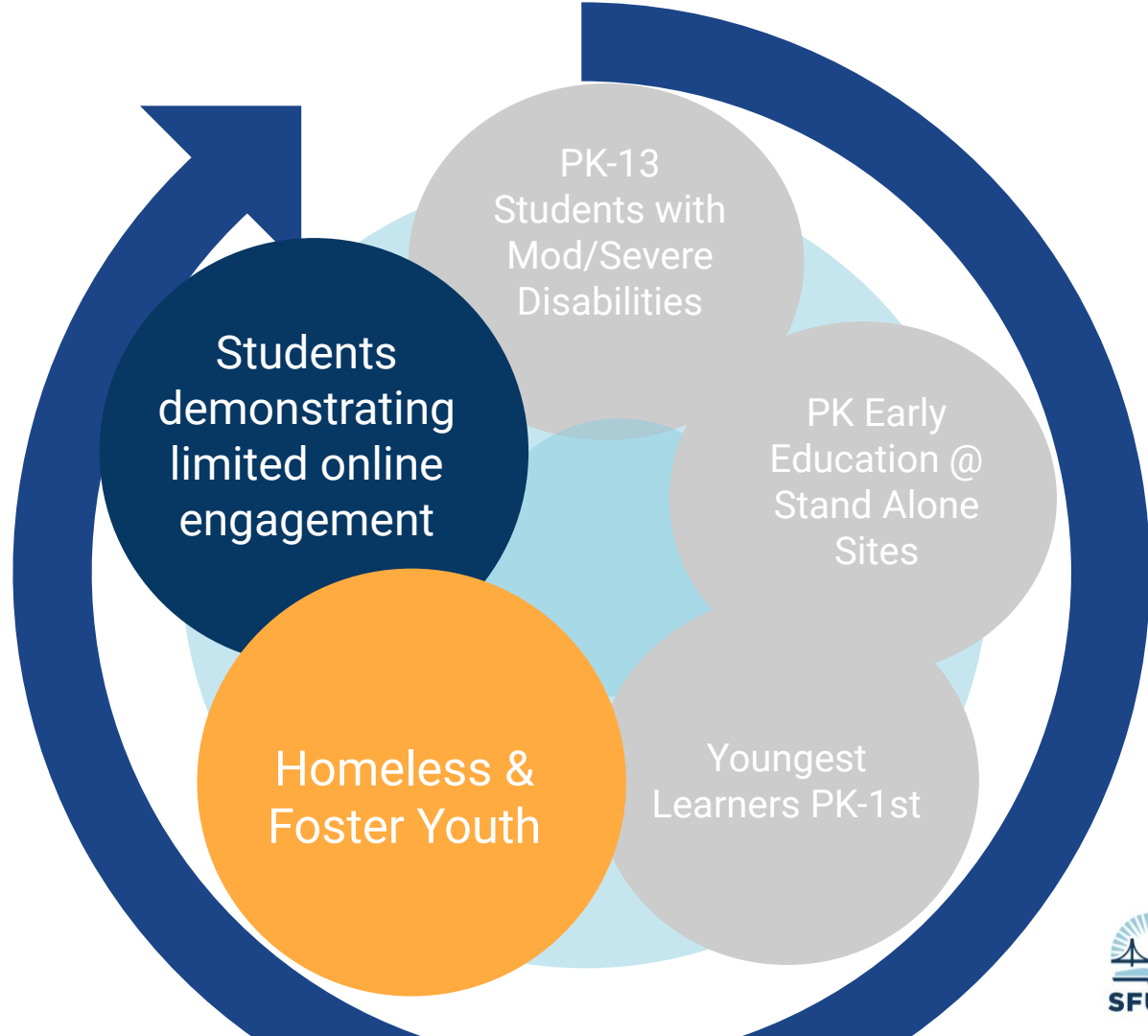
Priority Populations Identified

- Identify priority group
- Identify staffing for priority groups
- Identify site locations

If NO: Do Not Resume In Person Operations

Gradual Return to In Person Learning

1. Identify students
2. Identify staffing
3. Identify site locations



Indicators Remain the Same

General Safety Measures

ALL Staff Trained.

Families Informed of Health & Safety Protocols

COVID 19 Prevention Measures in Place

School Facilities Prepped for Social Distancing

Instructional Learning Plans in Place

Labor Agreements in Place

If NO: Do Not Resume In Person Operations

Next Steps

Next Steps

Recommendations in this presentation are a product of stakeholder & community feedback from Summer 2020

Next steps include:

- Solicit additional feedback from stakeholders & community
- Continue to take action on SFUSD Operational Indicators
- Share progress updates

Thank You!

