



300 GRANT AVE
MAJOR
ENCROACHMENT

PROJECT OVERVIEW



• October 2017

- Demolish two existing buildings



• January 2020

- Develop new 6-story mixed-use building over existing 1-story basement containing office and retail space
 - Improving the existing pedestrian realm on Harlan Place
-

MAJOR ENCROACHM ENT

- (1) A raised crosswalk across Harlan Place
- (2) Pavers within the sidewalk furnishing zones of Grant Avenue, Sutter Street and Harlan Place fronting 300 Grant Avenue
- (3) Three benches within proposed pavers along Harlan Place fronting 300 Grant Avenue
- (4) Pavers on Harlan Place
- (5) One bollard each on the north and south sidewalks of Harlan Place



Raised Crosswalk

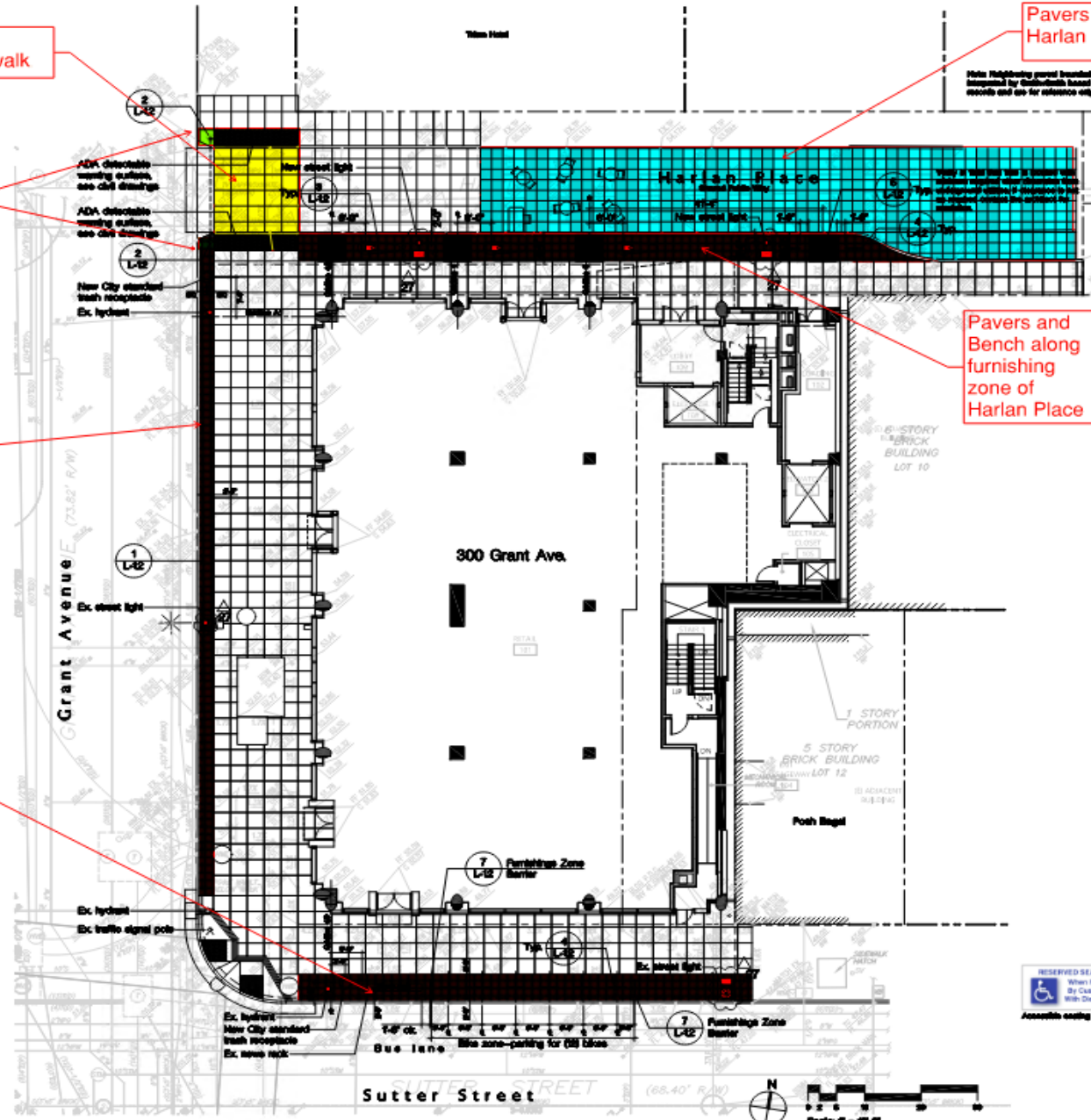
Pavers on Harlan Place

Bollards

Pavers and Bench along furnishing zone of Harlan Place

Pavers along furnishing zone of Grant Ave

Pavers along furnishing zone of Sutter St.



Item	Type	Color/Finish/Notes	Reference
	Decorative Tile Paver	See Outdoor Outdoor/Indoor (see specification) 24" x 24" x 1/2" thick with 1/8" grout joints Outdoor Pavers Provide finished top surface, correct slope and bottom Clearance: 1/8" thick, 1/2" from edge or 1/2" from or approved equal Provide 1/2" raised up with each grout color for safety For proper product placement, see project site visit	1 L-12
	Recessed Concrete Paver	Specify the Large Grade Color Pavers (see specification) 24" x 24" x 1/2" - 1/4" thick Clear 1/2" from edge Block letter pattern 10-100 percent coverage before setting For proper before setting and joint show the old paver Grout joints grout color to match paver For proper product placement, see project site visit	2 Old Drawings
	Concrete Block	12" sq joint pattern Color: Custom Mix - 2 Blocks Finish: Smooth - apply 1/8" coat - 60 lbs/100 sq ft	2 Old Drawings
	Concrete Paving at Street Light	Same as paver pattern - match width and depth of test made with joints at adjacent paving edge with pattern at adjacent paving around corner: Custom Mix - 2 Blocks Finish: Smooth	2 Old Drawings
	Steel Plate	See Appendix D-1 (see specification) 24" x 24" x 1/2" thick with 1/8" grout joints per listed per detail Provide 1/2" raised up with each grout color for safety Provide 1/2" raised up with each grout color for safety Provide 1/2" raised up with each grout color for safety	5 L-12
	Bollard with chain	Urban Accessory D-4 (see specification) 24" x 24" x 24" dia, with with two 1/2" dia chain per listed per detail Provide 1/2" raised up with each grout color for safety Provide 1/2" raised up with each grout color for safety Provide 1/2" raised up with each grout color for safety	2 L-12
	Bench	See Appendix D-4 (see specification) 24" x 24" x 24" dia, with with two 1/2" dia chain per listed per detail Provide 1/2" raised up with each grout color for safety Provide 1/2" raised up with each grout color for safety Provide 1/2" raised up with each grout color for safety	8 L-12
	Site Post	24" x 24" x 24" dia, with with two 1/2" dia chain per listed per detail Provide 1/2" raised up with each grout color for safety Provide 1/2" raised up with each grout color for safety Provide 1/2" raised up with each grout color for safety	4 L-12
	Mobile Street Table and Chair	Provide 1/2" raised up with each grout color for safety Provide 1/2" raised up with each grout color for safety Provide 1/2" raised up with each grout color for safety	4 L-12
	Mobile ADA Table and Chair	Provide 1/2" raised up with each grout color for safety Provide 1/2" raised up with each grout color for safety Provide 1/2" raised up with each grout color for safety	4 L-12
	Trash/Recycling Receptacle	City standard Color: City standard green	8 L-12

RESERVED SEATING
When Needed
By Customers
With Disabilities
Accessibility symbol